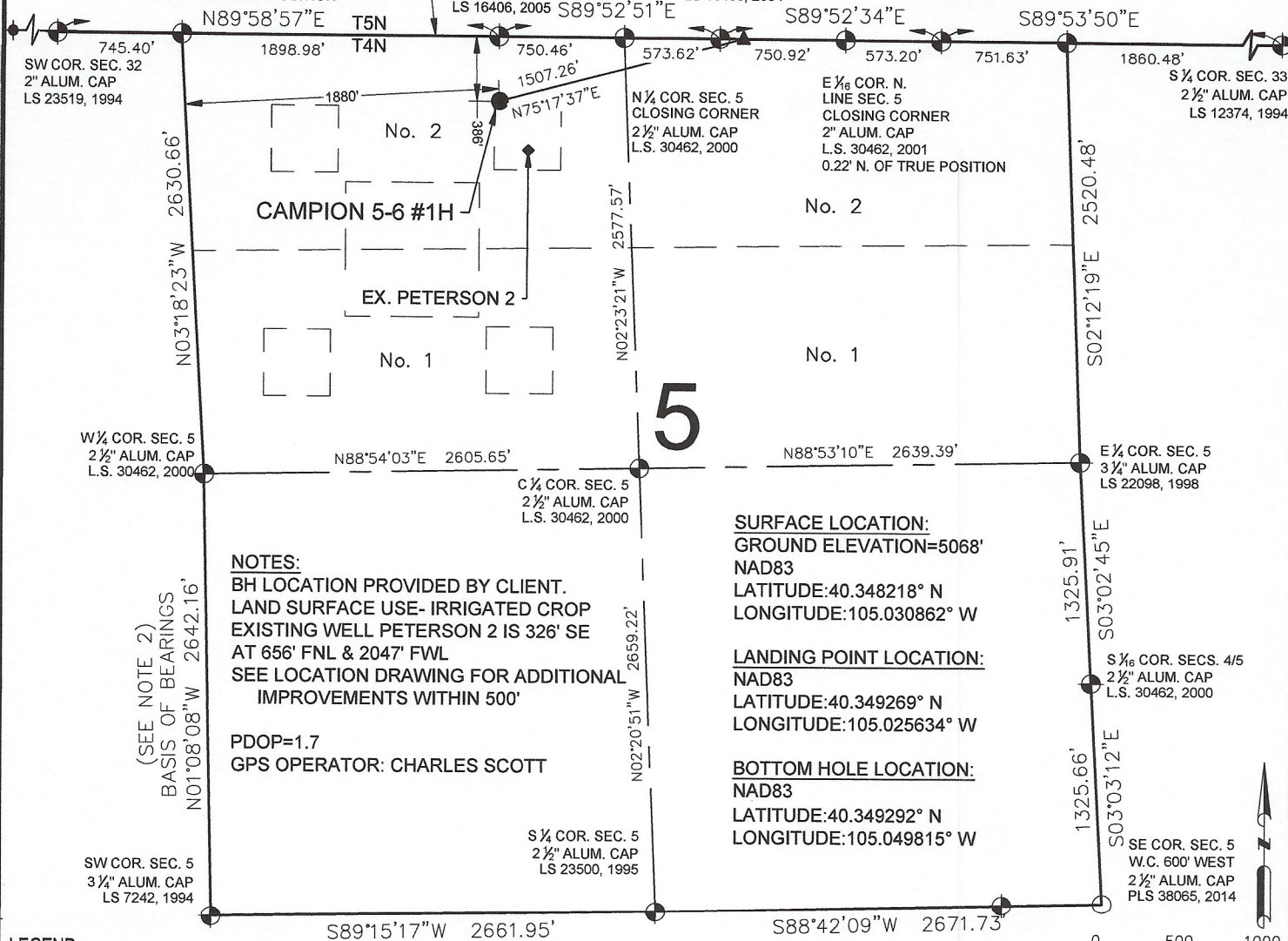


## CAMPION 5-6 #1H

## WELL LOCATION CERTIFICATE

BHL: 0' FNL  
1924' FWL } SEC. 6NW COR. SEC. 5  
CLOSING CORNER  
3 1/4" ALUM. CAP  
PLS NO 38346, 2017  
2.15' S. OF TRUE POSITIONN89°54'24"W  
6741.59'S 1/4 COR. SEC. 32  
3 1/4" ALUM. CAP  
LS 16406, 2005E 1/4 COR. S.  
LINE SEC. 32  
3 1/4" ALUM. CAP  
LS 16406, 2004SE COR. SEC. 32  
2 1/2" ALUM. CAP  
LS 12374, 1996NE COR. SEC. 5  
CLOSING CORNER  
2 1/2" ALUM. CAP  
LS. 30462, 2004

## NOTES:

BH LOCATION PROVIDED BY CLIENT.  
LAND SURFACE USE- IRRIGATED CROP  
EXISTING WELL PETERSON 2 IS 326' SE  
AT 656' FNL & 2047' FWL  
SEE LOCATION DRAWING FOR ADDITIONAL  
IMPROVEMENTS WITHIN 500'

PDOP=1.7

GPS OPERATOR: CHARLES SCOTT

## SURFACE LOCATION:

GROUND ELEVATION=5068'  
NAD83  
LATITUDE:40.348218° N  
LONGITUDE:105.030862° W

## LANDING POINT LOCATION:

NAD83  
LATITUDE:40.349269° N  
LONGITUDE:105.025634° W

## BOTTOM HOLE LOCATION:

NAD83  
LATITUDE:40.349292° N  
LONGITUDE:105.049815° W

## LEGEND

- = EXISTING MONUMENT  
 ○ = CALCULATED POSITION  
 ● = PROPOSED WELL  
 ◆ = EXISTING WELL  
 ◆ = BOTTOM HOLE  
 ▲ = LANDING POINT  
 LP = LANDING POINT  
 BHL = BOTTOM HOLE LOCATION

## NOTES:

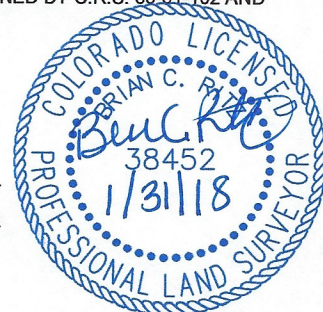
- THIS FIELD SURVEY CONFORMS TO THE MINIMUM STANDARDS SET BY THE C.O.G.C.C., RULE NO. 215
- BEARINGS ARE BASED ON THE ASSUMPTION THAT THE WEST LINE OF THE SOUTHWEST QUARTER OF SECTION 5, BEARS N01°08'08"W BETWEEN THE MONUMENTS SHOWN HEREON.
- ALL DISTANCES AND BEARINGS SHOWN HEREON ARE GROUND VALUES AS GPS MEASURED IN THE FIELD, WITH TIES TO WELLS MEASURED PERPENDICULAR TO SECTION LINES. THIS LOW DISTORTION PROJECTION (LDP) IS BASED ON THE NORTH AMERICAN DATUM OF 1983, U.S. SURVEY FOOT WITH A LATITUDE ORIGIN OF 40.392540°N, A CENTRAL MERIDIAN LONGITUDE OF 105.002429°W, AND A SCALE FACTOR ON THE CENTRAL MERIDIAN OF 1.000236 (EXACT). THE LDP BASIS OF BEARINGS IS GEODETIC NORTH.
- FIELD VERIFICATION OF MONUMENTS COMPLETED WITHIN 1 YEAR OF SIGNATURE DATE.

NOTICE: ACCORDING TO COLORADO LAW YOU MUST COMMENCE ANY LEGAL ACTION BASED UPON ANY DEFECT IN THIS SURVEY WITHIN THREE YEARS AFTER YOU FIRST DISCOVER SUCH DEFECT. IN NO EVENT MAY ANY ACTION BASED UPON ANY DEFECT IN THIS SURVEY BE COMMENCED MORE THAN TEN YEARS FROM THIS SAID DATE OF THIS CERTIFICATION SHOWN HEREON.

WELL CAMPION 5-6 #1H TO BE  
LOCATED 386' FNL & 1880' FWL

I, BRIAN C. RITZ, A LICENSED PROFESSIONAL LAND SURVEYOR IN THE STATE OF COLORADO DO HEREBY CERTIFY TO MAGPIE OPERATING, INC. THAT THE SURVEY AND WELL LOCATION CERTIFICATE SHOWN HEREON WERE DONE BY ME OR UNDER MY DIRECT SUPERVISION AND THAT THE DRAWING SHOWN HEREON ACCURATELY DEPICTS THE PROPOSED LOCATION OF THE WELL. THIS CERTIFICATE DOES NOT REPRESENT A LAND SURVEY PLAT OR IMPROVEMENT SURVEY PLAT AS DEFINED BY C.R.S. 38-51-102 AND CANNOT BE RELIED UPON TO DETERMINE OWNERSHIP.

BRIAN C. RITZ, PLS 38452  
COLORADO LICENSED PROFESSIONAL LAND SURVEYOR  
FOR AND ON BEHALF OF P.F.S., LLC  
d.b.a. ASCENT GEOMATICS SOLUTIONS



SHEET 1 OF 4



FIELD DATE:

01-05-18

DRAWING DATE:

01-25-18

BY:  
MJECHECKED:  
IJM

WELL NAME:

CAMPION 5-6 #1H

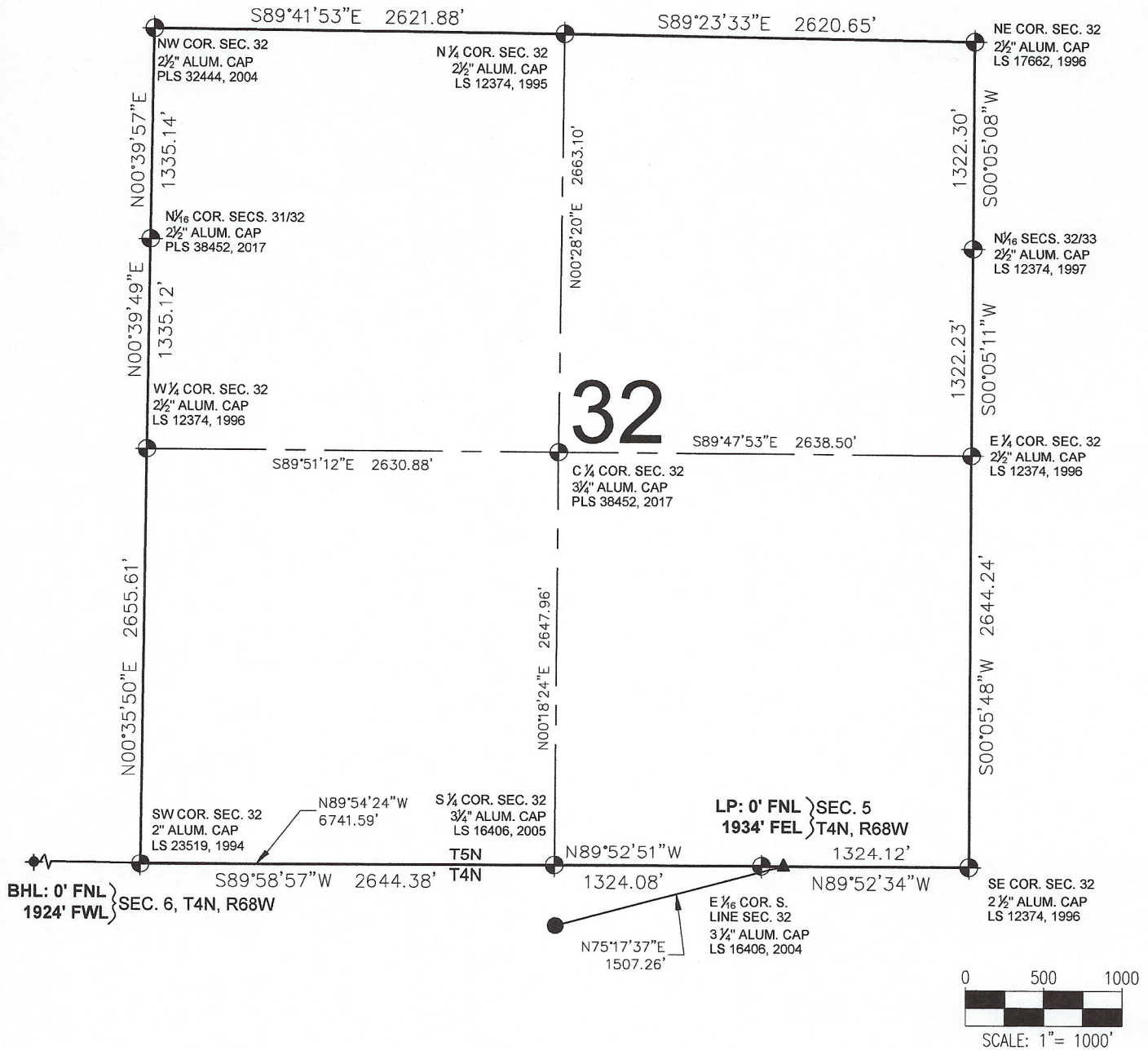
SURFACE LOCATION:

LOT 2 NW 1/4 SEC. 5 T4N, R68W, 6TH P.M.  
WELD COUNTY, COLORADO

PREPARED FOR:

MAGPIE  
OPERATING, INC.

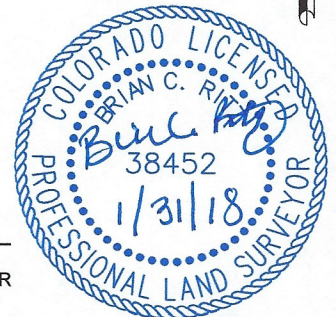
# CAMPION 5-6 #1H WELL LOCATION CERTIFICATE



## LEGEND

- ⊕ = EXISTING MONUMENT      ✦ = BOTTOM HOLE
- = CALCULATED POSITION      ▲ = LANDING POINT
- = PROPOSED WELL      LP = LANDING POINT
- ◆ = EXISTING WELL      BHL = BOTTOM HOLE LOCATION

BRIAN C. RITZ, PLS 38452  
COLORADO LICENSED PROFESSIONAL LAND SURVEYOR  
FOR AND ON BEHALF OF P.F.S., LLC



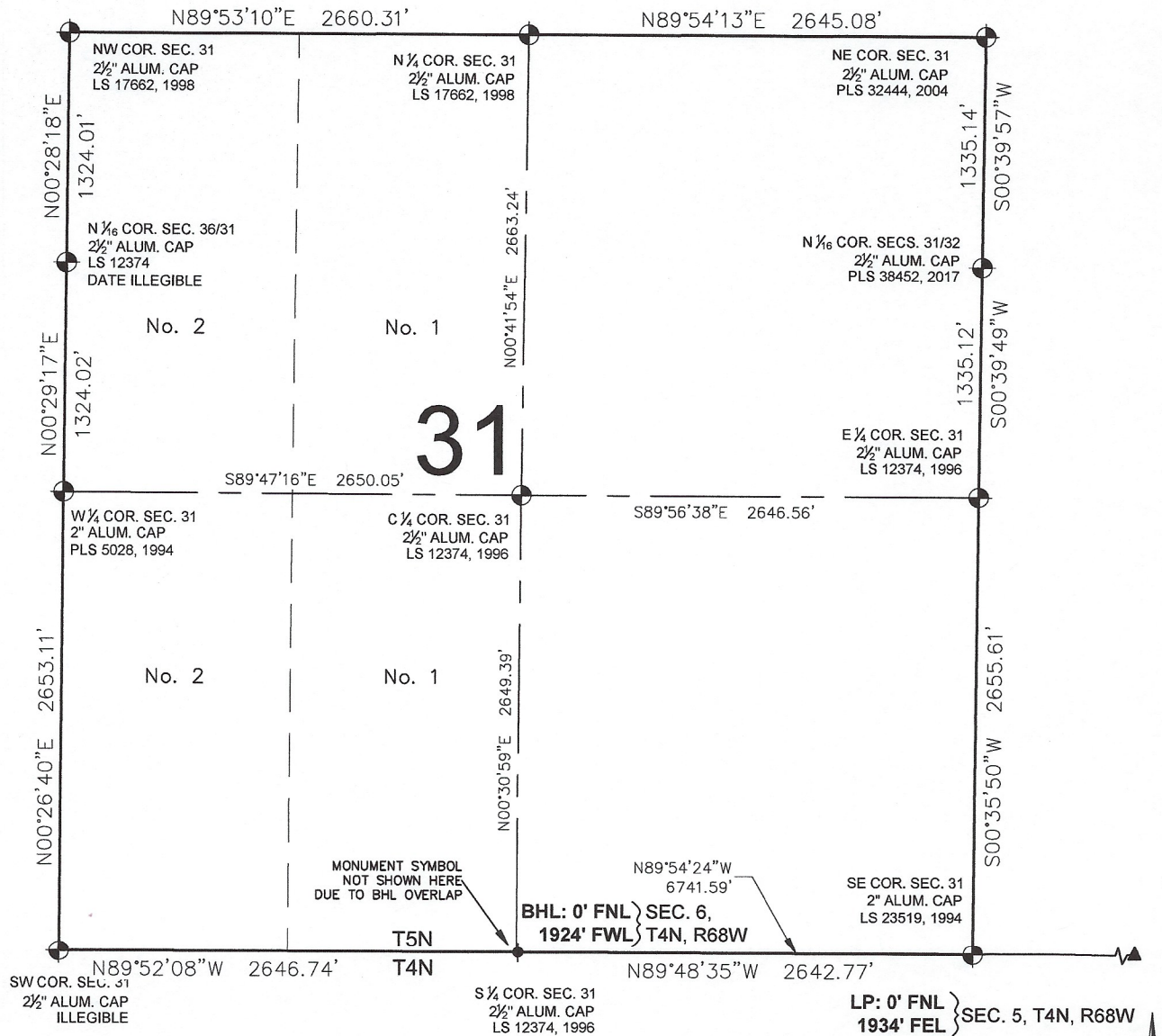
SHEET 2 OF 4



FIELD DATE: 01-05-18	WELL NAME: CAMPION 5-6 #1H
DRAWING DATE: 01-25-18	SURFACE LOCATION: LOT 2 NW 1/4 SEC. 5 T4N, R68W, 6TH P.M. WELD COUNTY, COLORADO
BY: MJE	CHECKED: IJM

PREPARED FOR:  
  
**MAGPIE  
OPERATING, INC.**

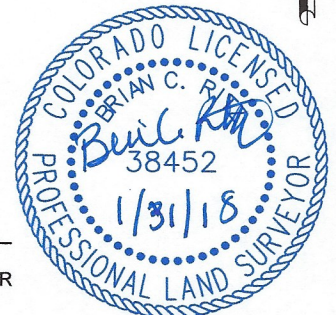
# CAMPION 5-6 #1H WELL LOCATION CERTIFICATE



## LEGEND

- ⊕ = EXISTING MONUMENT      ⊕ = BOTTOM HOLE
- = CALCULATED POSITION      ▲ = LANDING POINT
- = PROPOSED WELL      LP = LANDING POINT
- ◆ = EXISTING WELL      BHL = BOTTOM HOLE LOCATION

BRIAN C. RITZ, PLS 38452  
COLORADO LICENSED PROFESSIONAL LAND SURVEYOR  
FOR AND ON BEHALF OF P.F.S., LLC



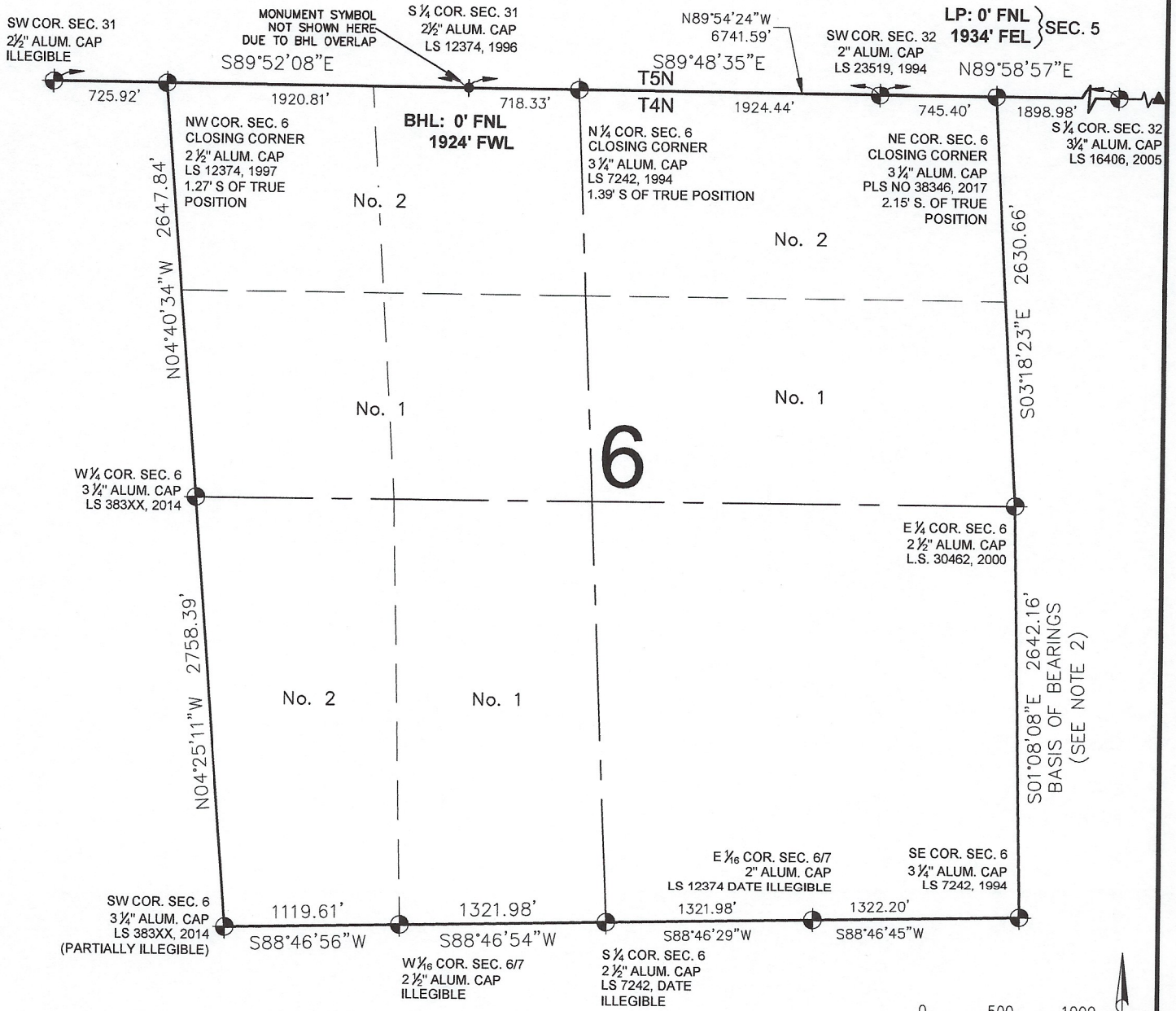
SHEET 2 OF 4



FIELD DATE: 01-05-18	WELL NAME: CAMPION 5-6 #1H
DRAWING DATE: 01-25-18	SURFACE LOCATION: LOT 2 NW 1/4 SEC. 5 T4N, R68W, 6TH P.M. WELD COUNTY, COLORADO
BY: MJE	CHECKED: IJM

PREPARED FOR:  
**MAGPIE  
OPERATING, INC.**

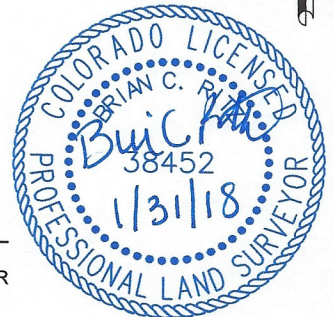
# CAMPION 5-6 #1H WELL LOCATION CERTIFICATE



## LEGEND

- = EXISTING MONUMENT
- = CALCULATED POSITION
- = PROPOSED WELL
- ◆ = EXISTING WELL
- ⬮ = BOTTOM HOLE
- ▲ = LANDING POINT
- LP = LANDING POINT
- BHL = BOTTOM HOLE LOCATION

BRIAN C. RITZ, PLS 38452  
COLORADO LICENSED PROFESSIONAL LAND SURVEYOR  
FOR AND ON BEHALF OF P.F.S., LLC



SHEET 4 OF 4

PREPARED FOR:

**MAGPIE  
OPERATING, INC.**