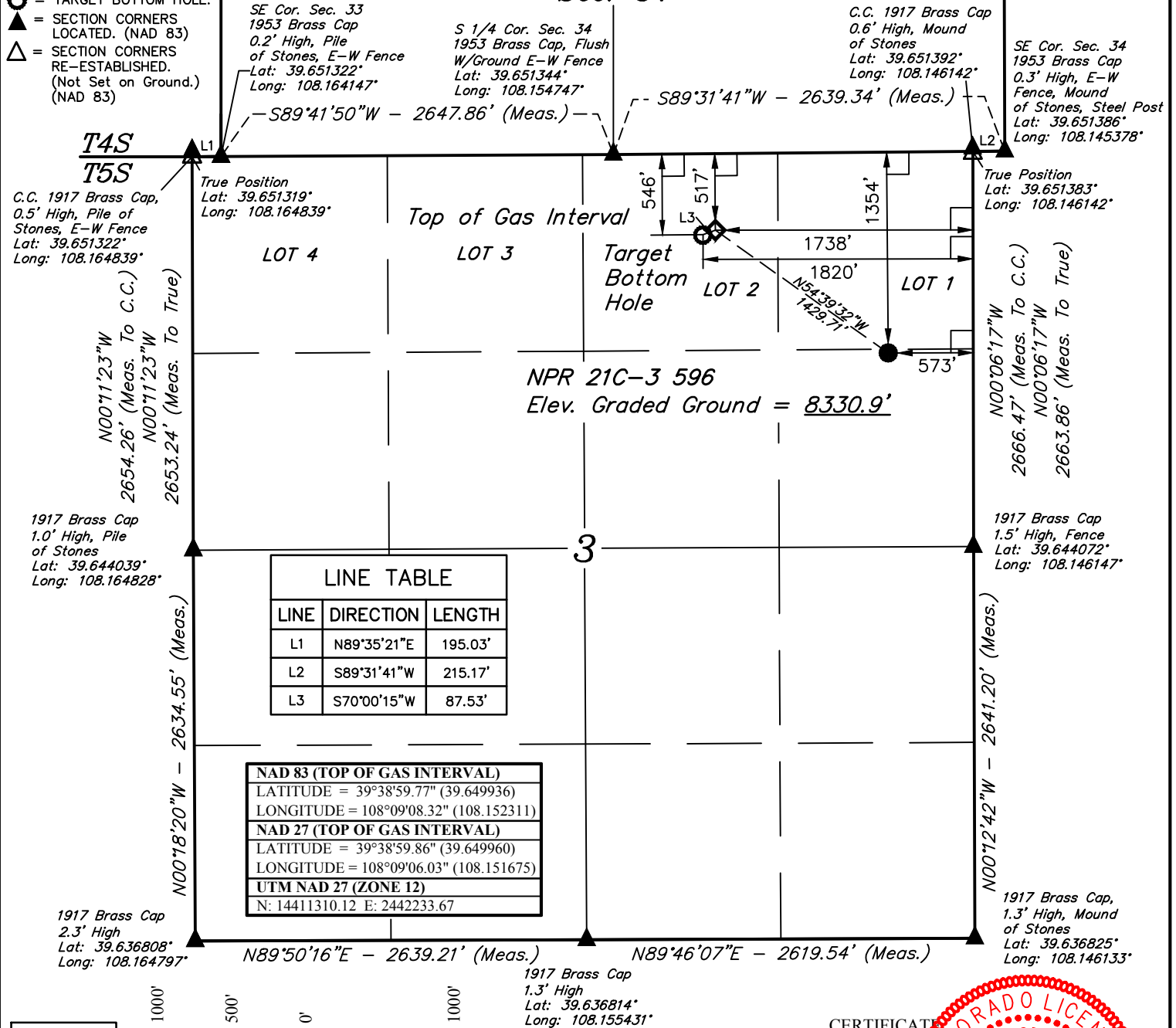


LEGEND:

- = 90° SYMBOL
- = PROPOSED WELLHEAD.
- ◇ = TOP OF GAS INTERVAL
- = TARGET BOTTOM HOLE.
- ▲ = SECTION CORNERS LOCATED. (NAD 83)
- △ = SECTION CORNERS RE-ESTABLISHED. (Not Set on Ground.) (NAD 83)

T5S, R96W, 6th P.M.

Sec. 34



PDOP = 1.4



NAD 83 (SURFACE LOCATION)	NAD 83 (TARGET BOTTOM HOLE)
LATITUDE = 39°38'51.57" (39.647659)	LATITUDE = 39°38'59.48" (39.649855)
LONGITUDE = 108°08'53.44" (108.148178)	LONGITUDE = 108°09'09.37" (108.152604)
NAD 27 (SURFACE LOCATION)	NAD 27 (TARGET BOTTOM HOLE)
LATITUDE = 39°38'51.66" (39.647684)	LATITUDE = 39°38'59.56" (39.649879)
LONGITUDE = 108°08'51.15" (108.147542)	LONGITUDE = 108°09'07.08" (108.151967)
UTM NAD 27 (ZONE 12)	UTM NAD 27 (ZONE 12)
N: 14410517.90 E: 2443423.71	N: 14411277.78 E: 2442152.35

CERTIFICATE

THIS IS TO CERTIFY THAT THE ABOVE PLAT WAS PREPARED AND THE LOCATION AS SHOWN WAS STAKED ON THE GROUND FROM FIELD NOTES OF ACTUAL SURVEYS MADE BY ME OR UNDER MY SUPERVISION AND THAT THE SAME ARE TRUE AND CORRECT TO THE BEST OF MY KNOWLEDGE AND BELIEF.

Handwritten Signature: Harold Marshall

REGISTERED LAND SURVEYOR
 REGISTRATION NO. 180
 STATE OF COLORADO 06-18-18

BASIS OF BEARINGS
 BASIS OF BEARINGS IS A G.P.S. OBSERVATION

BASIS OF ELEVATION
 BENCH MARK (H79) LOCATED IN THE NE 1/4 OF SECTION 35, T4S, R98W, 6th P.M., TAKEN FROM THE BULL FORK, QUADRANGLE, COLORADO, 7.5 MINUTE SERIES (TOPOGRAPHIC MAP) PUBLISHED BY THE UNITED STATES DEPARTMENT OF THE INTERIOR, GEOLOGICAL SURVEY. SAID ELEVATION IS MARKED AS BEING 8535 FEET.



UELS, LLC
 Corporate Office * 85 South 200 East
 Vernal, UT 84078 * (435) 789-1017



Caerus Oil & Gas LLC

NPR 21C-3 596
 SE 1/4 NE 1/4, SECTION 3, T5S, R96W, 6th P.M.
 GARFIELD COUNTY, COLORADO

SURVEYED BY	BART HUNTING, C.R.	03-01-18	SCALE
DRAWN BY	M.D.	05-18-18	1" = 1000'

WELL LOCATION PLAT