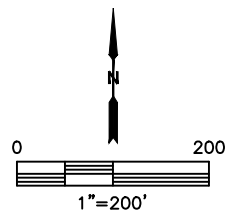
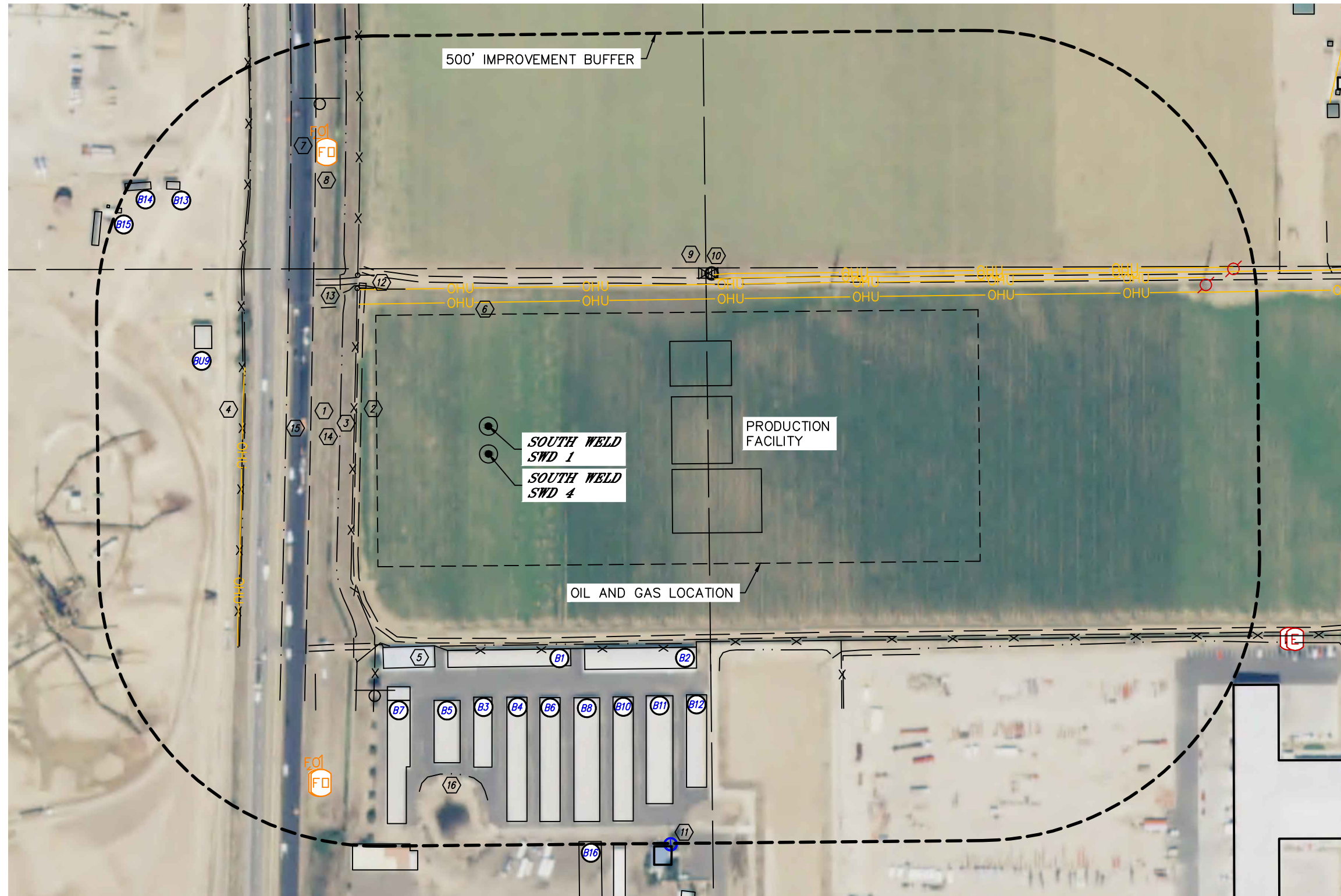


LOCATION DRAWING
SOUTH WELD SWD FACILITY





Lat40°, Inc. 6250 W. 10th Street, Unit 2, Greeley, CO 970-515-5294

LOCATION DRAWING

SOUTH WELD SWD FACILITY

SECTION: 30
TOWNSHIP: 1N
RANGE: 66W
6TH. P.M.
WELD COUNTY, CO

IMPROVEMENTS:

(MEASURED FROM THE PROPOSED SOUTH WELD SWD 1 WELL LOCATION)

- ① NO BUILDING UNITS WITHIN 500' IMPROVEMENT BUFFER
- ② BUILDING B1 400' S, B2 434' SE, B3 485' S, B4 486' S, B5 493' SW, B6 494' SE, B7 510' SW, B8 510' SE, B9 514' NW, B10 533' SE, B11 559' SE, B12 597' SE, B13 696' NW, B14 738' NW, B15 760' NW, B16 761' SE
- ③ US HIGHWAY 85 318' W
- ④ ROAD/EDGE OF GRAVEL 228' W, 256' N, 348' NW, 443' SW, 756' SE
- ⑤ FENCE 240' W, 400' S, 553' & 738' SE
- ⑥ FENCE – GRAVEL PIT (LIMITED ACCESS) 439' W
- ⑦ STORAGE CONTAINERS 405', 487' & 760' SW, 780' SE
- ⑧ OVERHEAD UTILITY LINE 222' N, 441' W, 483' NE
- ⑨ FIBER OPTIC MARKER 569' NW, 705' SW
- ⑩ FIBER OPTIC VAULT 571' NW, 705' & 707' SW
- ⑪ IRRIGATION VALVE 479' NE
- ⑫ IRRIGATION WELL 484' NE
- ⑬ WATER WELL 816' SE
- ⑭ BRIDGE 331' NW
- ⑮ PIPE 361' NW, 434' & 450' SW
- ⑯ DITCH 265' W, 287' & 347' NW, 390' S, 431' SW, 750' SE
- ⑰ BORROW DITCH 362' & 435' W, 541' SW
- ⑱ POND 590' SE, 626' S