

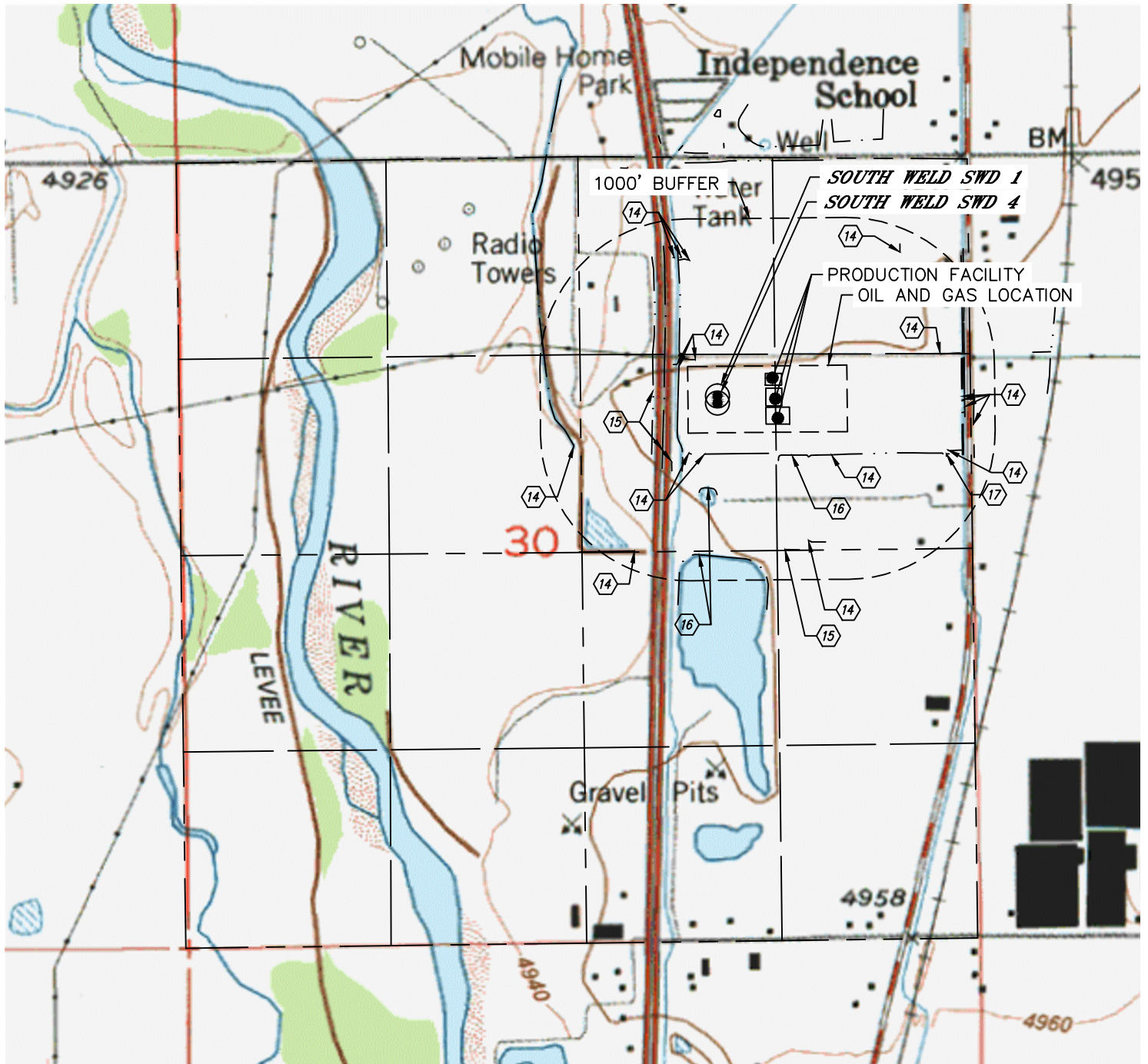


Lat40°, Inc. 6250 W. 10th Street, Unit 2, Greeley, CO 970-515-5294

HYDROLOGY MAP

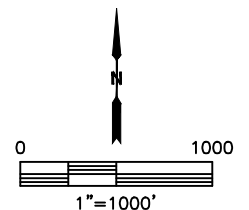
SOUTH WELD SWD FACILITY

SECTION: 30
TOWNSHIP: 1N
RANGE: 66W
6TH. P.M.
WELD COUNTY, CO



DISTANCES MEASURED FROM THE EDGE OF THE OIL AND GAS LOCATION.

- ⑭ DITCH 47', 721' & 743' N, 59' W, 73' & 745' NW, 137', 143', 156' & 734' S, 638' & 846' NE, 691' SE, 777', 784', 796' & 855' E, 779' & 878' SW
- ⑮ BORROW DITCH 163' & 235' W, 223' SW, 795' S
- ⑯ POND 155', 372' & 824' S
- ⑰ CURB & GUTTER 688' SE



DATE: 6/13/2018
PROJECT#: 2018040