



Lat40°, Inc. 6250 W. 10th Street, Unit 2, Greeley, CO 970-515-5294

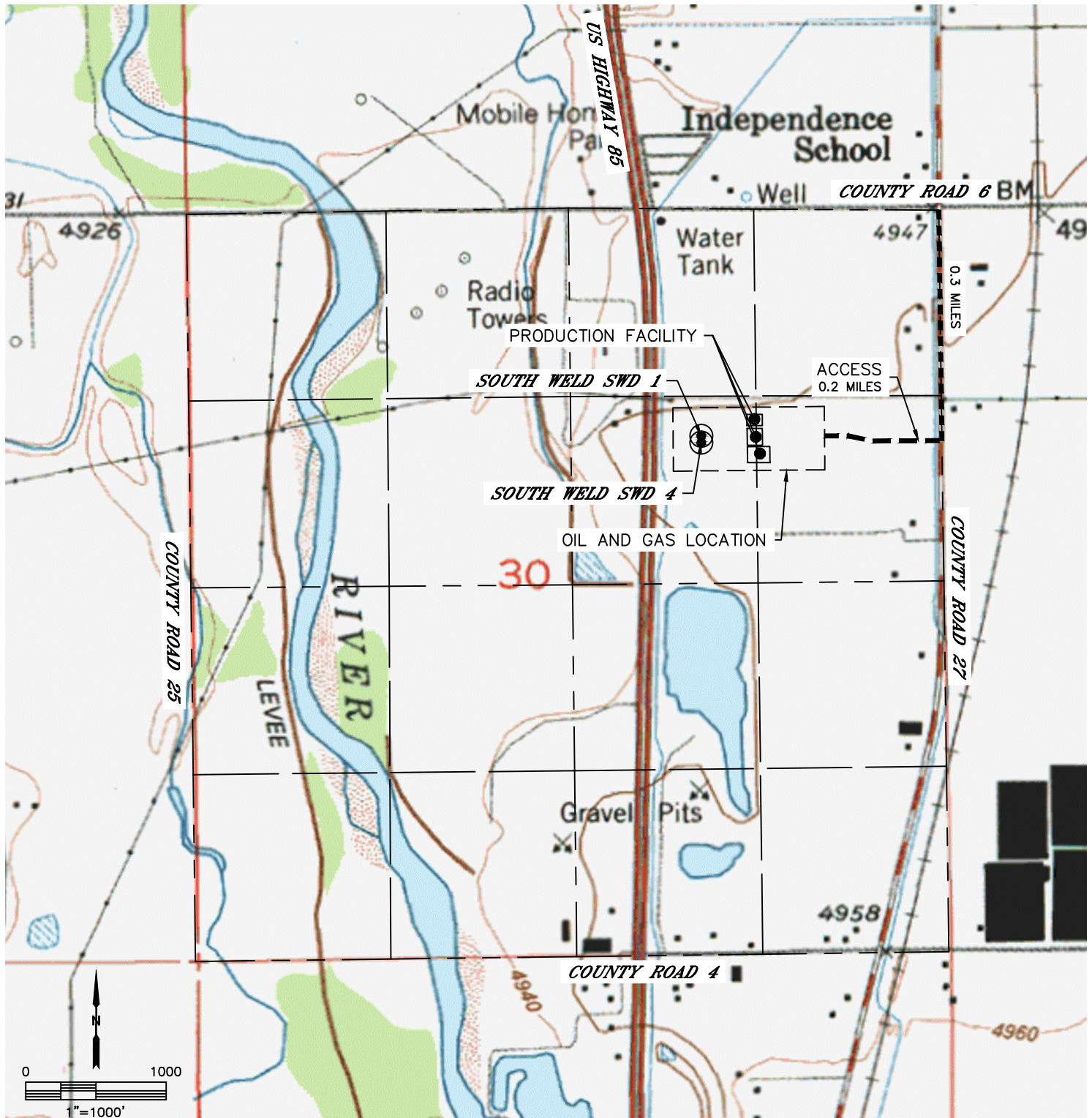
ACCESS ROAD MAP

SOUTH WELD SWD FACILITY

SECTION: 30
TOWNSHIP: 1N
RANGE: 66W
6TH. P.M.
WELD COUNTY, CO

DRIVING DIRECTIONS TO SOUTH WELD SWD FACILITY

FROM THE INTERSECTION OF COUNTY ROAD 6 AND COUNTY ROAD 27, GO SOUTH ON COUNTY ROAD 27 FOR 0.3 MILES TO A PROPOSED ROAD TO THE WEST. GO WEST FOR 0.2 MILES TO THE PROPOSED PRODUCTION FACILITY AND PROPOSED WELL HEADS.





Lat40°, Inc. 6250 W. 10th Street, Unit 2, Greeley, CO 970-515-5294

ACCESS ROAD MAP

SOUTH WELD SWD FACILITY

SECTION: 30
TOWNSHIP: 1N
RANGE: 66W
6TH. P.M.
WELD COUNTY, CO

