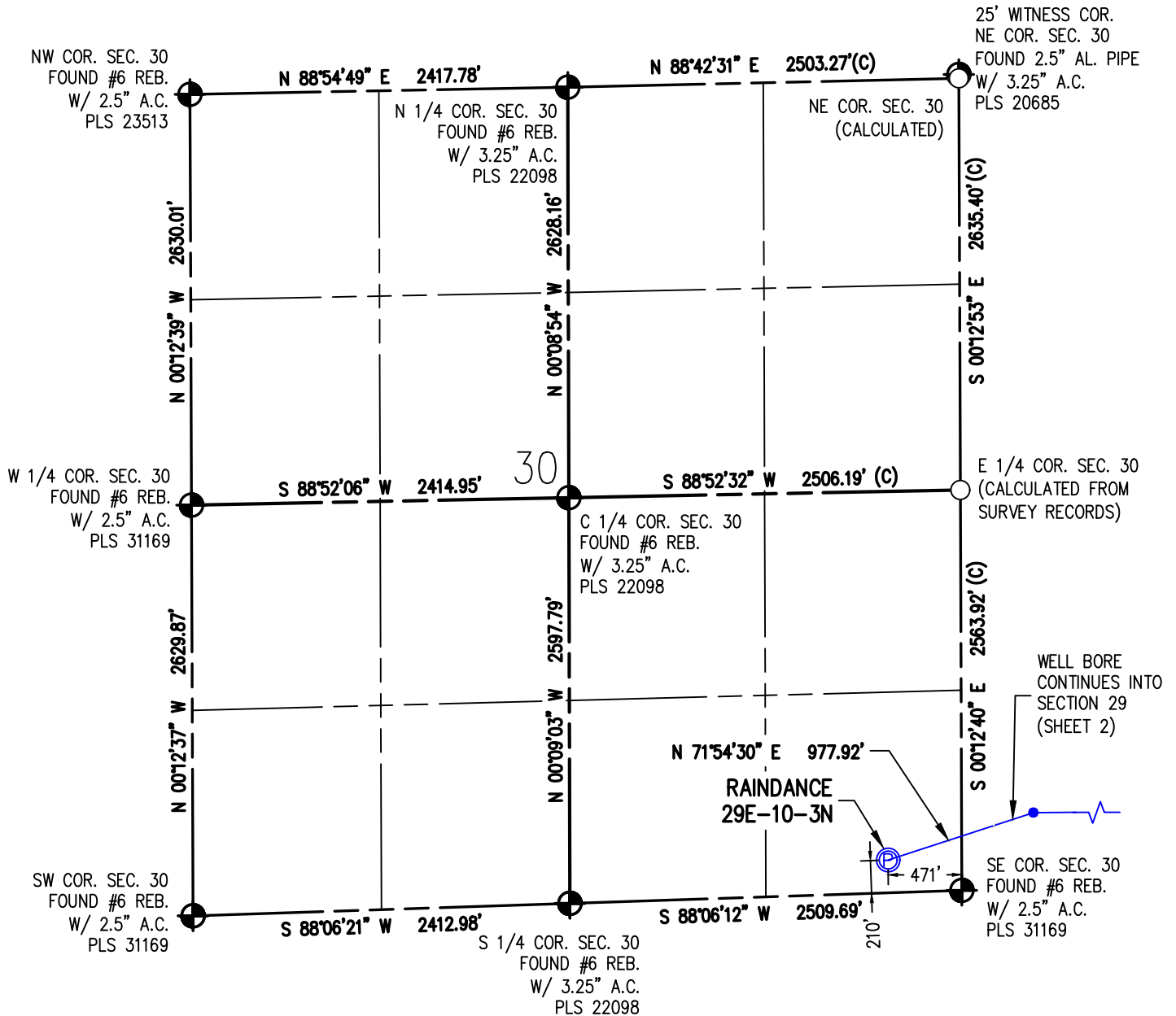


WELL LOCATION PLAT RAINANCE 29E-10-3N

SE 1/4 SE 1/4 SEC. 30, T6N, R67W, 6TH P.M.



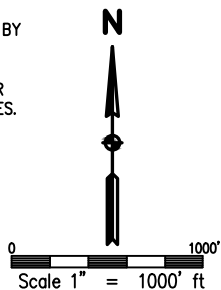
NOTES:

1. INDICATES SECTION CORNER
2. INDICATES CALCULATED CORNER
3. (C) INDICATES CALCULATED DIMENSION
4. ELEVATION BASED ON NAVD88 (GEOID12B)
5. BEARINGS DERIVED FROM COLORADO COORDINATE SYSTEM OF 1983 NORTH ZONE.
6. OPERATOR: JEFF VAN HORN
7. IMPROVEMENTS: SEE LOCATION DRAWING FOR ALL VISIBLE IMPROVEMENTS WITHIN 500' OF DISTURBED AREA.
8. WELL FOOTAGES ARE MEASURED AT RIGHT ANGLES TO THE SECTION LINES.

SURFACE LOCATION
SEC. 30, T6N, R67W
GROUND ELEVATION = 4977.4'
PDOP = 1.3
LATITUDE = 40.451272°
LONGITUDE = -104.928193°
210' FSL, 471' FEL
ENTRY POINT LOCATION
SEC. 29, T6N, R67W
LATITUDE = 40.452089°
LONGITUDE = -104.924847°
495' FSL, 460' FWL
BOTTOM HOLE LOCATION
SEC. 29, T6N, R67W
LATITUDE = 40.452090°
LONGITUDE = -104.909475°
495' FSL, 460' FEL

I HEREBY CERTIFY THAT THIS WELL LOCATION CERTIFICATE WAS PREPARED BY ME, OR UNDER MY DIRECT SUPERVISION, THAT THE FIELD WORK WAS COMPLETED ON 3/2/2017, THAT IT IS NOT A LAND SURVEY PLAT OR AN IMPROVEMENT SURVEY PLAT, AND THAT IT IS NOT TO BE RELIED UPON FOR ESTABLISHMENT OF FENCE, BUILDING OR OTHER FUTURE IMPROVEMENT LINES.

AARON A. DEMO
Professional Land Surveyor Registration No. 38285
State of Colorado
FOR AND ON BEHALF OF BASELINE ENGINEERING CORP.

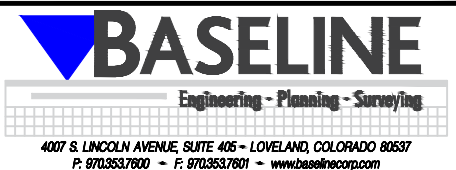


NOTES:

SURFACE USE: GRASSLAND
NEAREST EXISTING WELL:
RAINANCE 6 22' S

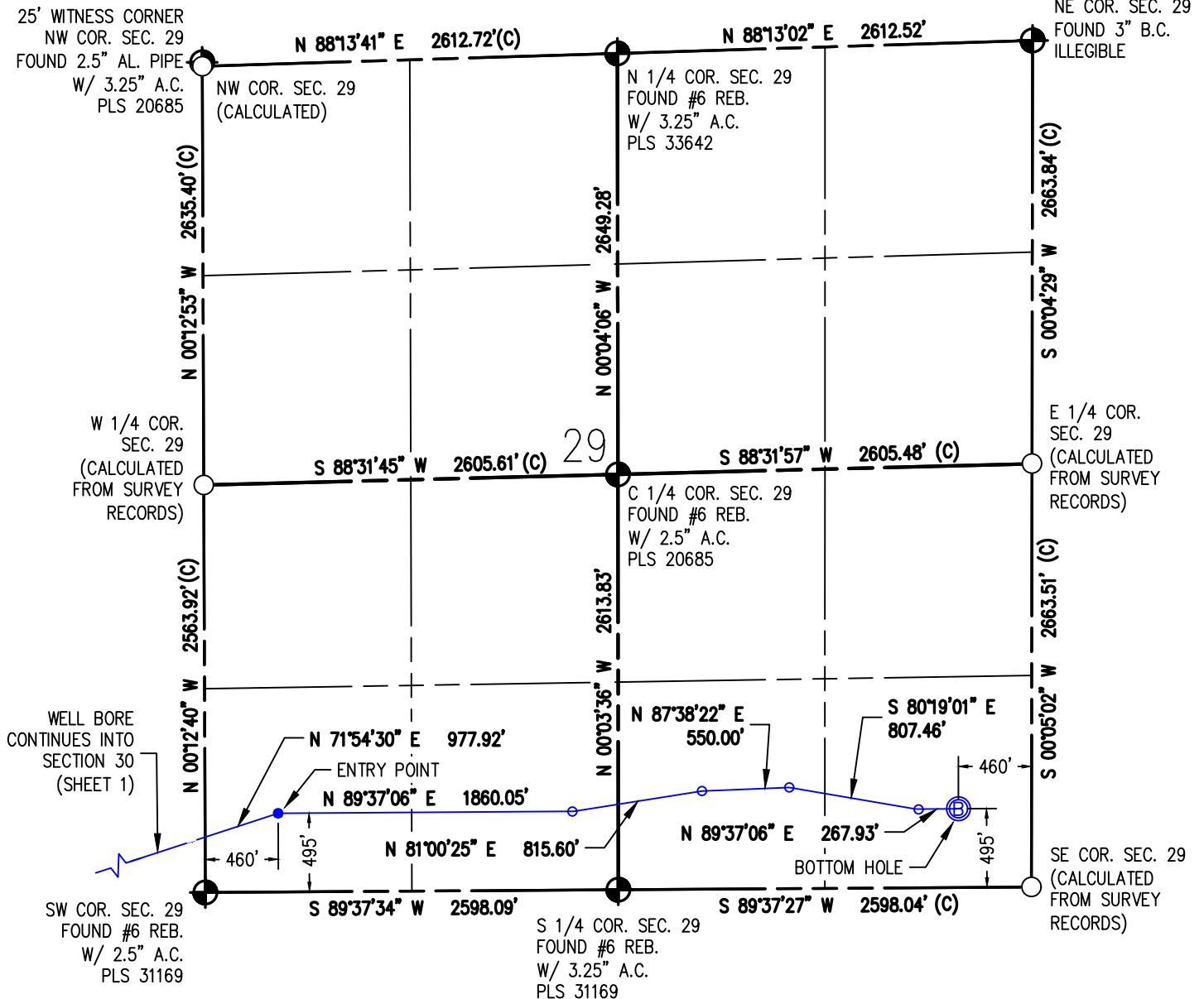


DRAWN BY	RPM	CHECKED BY	AAD
INITIAL SUBMITTAL	2/14/2018		
REVISED	7/11/2018		
DRAWING SIZE	8.5" X 11"		
JOB NO.	EXT06N67W30-01		
SHEET	1 OF 2		



WELL LOCATION PLAT RAINANCE 29E-10-3N

SE 1/4 SE 1/4 SEC. 30, T6N, R67W, 6TH P.M.



I HEREBY CERTIFY THAT THIS WELL LOCATION CERTIFICATE WAS PREPARED BY ME, OR UNDER MY DIRECT SUPERVISION, THAT THE FIELD WORK WAS COMPLETED ON 3/2/2017, THAT IT IS NOT A LAND SURVEY PLAT OR AN IMPROVEMENT SURVEY PLAT, AND THAT IT IS NOT TO BE RELED UPON FOR ESTABLISHMENT OF FENCE, BUILDING OR OTHER FUTURE IMPROVEMENT LINES.

AARON A. DEMO
Professional Land Surveyor Registration No. 38285
State of Colorado
FOR AND ON BEHALF OF BASELINE ENGINEERING CORP.

N

0 1000'
Scale 1" = 1000' ft

SURFACE LOCATION
SEC. 30, T6N, R67W
GROUND ELEVATION = 4977.4'
PDOP = 1.3
LATITUDE = 40.451272°
LONGITUDE = -104.928193°
210' FSL, 471' FEL
ENTRY POINT LOCATION
SEC. 29, T6N, R67W
LATITUDE = 40.452089°
LONGITUDE = -104.924847°
495' FSL, 460' FWL
BOTTOM HOLE LOCATION
SEC. 29, T6N, R67W
LATITUDE = 40.452090°
LONGITUDE = -104.909475°
495' FSL, 460' FEL

NOTES:

1. INDICATES SECTION CORNER
2. INDICATES CALCULATED CORNER
3. (C) INDICATES CALCULATED DIMENSION
4. ELEVATION BASED ON NAVD88 (GEOID12B)
5. BEARINGS DERIVED FROM COLORADO COORDINATE SYSTEM OF 1983 NORTH ZONE.
6. OPERATOR: JEFF VAN HORN
7. IMPROVEMENTS: SEE LOCATION DRAWING FOR ALL VISIBLE IMPROVEMENTS WITHIN 500' OF DISTURBED AREA.
8. WELL FOOTAGES ARE MEASURED AT RIGHT ANGLES TO THE SECTION LINES.

NOTES:

SURFACE USE: GRASSLAND
NEAREST EXISTING WELL:
RAINANCE 6 22' S



DRAWN BY	RPM	CHECKED BY	AAD
INITIAL SUBMITTAL	2/14/2018		
REVISED	7/11/2018		
DRAWING SIZE	8.5" X 11"		
JOB NO.	EXT06N67W30-01		
SHEET	2	OF	2

