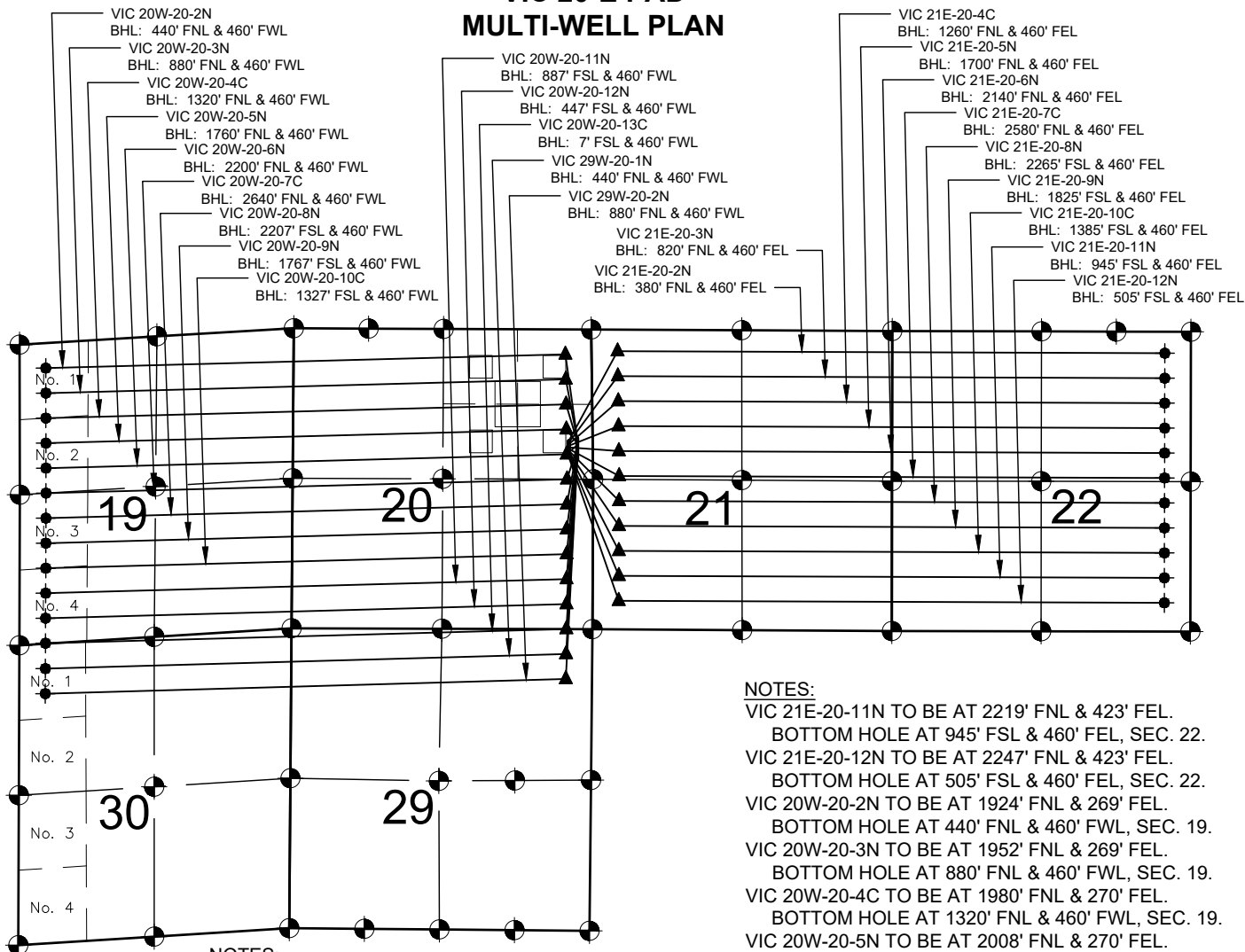


VIC 20-E PAD MULTI-WELL PLAN



NOTES:

- VIC 21E-20-2N TO BE AT 1967' FNL & 420' FEL.
- BOTTOM HOLE AT 380' FNL & 460' FEL, SEC. 22.
- VIC 21E-20-3N TO BE AT 1995' FNL & 420' FEL.
- BOTTOM HOLE AT 820' FNL & 460' FEL, SEC. 22.
- VIC 21E-20-4C TO BE AT 2023' FNL & 420' FEL.
- BOTTOM HOLE AT 1260' FNL & 460' FEL, SEC. 22.
- VIC 21E-20-5N TO BE AT 2051' FNL & 421' FEL.
- BOTTOM HOLE AT 1700' FNL & 460' FEL, SEC. 22.
- VIC 21E-20-6N TO BE AT 2079' FNL & 421' FEL.
- BOTTOM HOLE AT 2140' FNL & 460' FEL, SEC. 22.
- VIC 21E-20-7C TO BE AT 2107' FNL & 421' FEL.
- BOTTOM HOLE AT 2580' FNL & 460' FEL, SEC. 22.
- VIC 21E-20-8N TO BE AT 2135' FNL & 422' FEL.
- BOTTOM HOLE AT 2265' FSL & 460' FEL, SEC. 22.
- VIC 21E-20-9N TO BE AT 2163' FNL & 422' FEL.
- BOTTOM HOLE AT 1825' FSL & 460' FEL, SEC. 22.
- VIC 21E-20-10C TO BE AT 2191' FNL & 423' FEL.
- BOTTOM HOLE AT 1385' FSL & 460' FEL, SEC. 22.

NOTES:

1. THIS FIELD SURVEY CONFORMS TO THE MINIMUM STANDARDS SET BY THE C.O.G.C.C., RULE NO. 215
2. ALL DISTANCES AND BEARINGS SHOWN HEREON ARE GROUND VALUES AS GPS MEASURED IN THE FIELD, WITH TIES TO WELLS MEASURED PERPENDICULAR TO SECTION LINES. THIS LOW DISTORTION PROJECTION (LDP) IS BASED ON THE NORTH AMERICAN DATUM OF 1983, U.S. SURVEY FOOT WITH A LATITUDE ORIGIN OF 40.566967°N, A CENTRAL MERIDIAN LONGITUDE OF 104.888823°W, AND A SCALE FACTOR ON THE CENTRAL MERIDIAN OF 1.000237 (EXACT). THE LDP BASIS OF BEARINGS IS GEODETIC NORTH.
3. FIELD VERIFICATION OF MONUMENTS COMPLETED WITHIN 1 YEAR OF SIGNATURE DATE.

NOTES:

- VIC 21E-20-11N TO BE AT 2219' FNL & 423' FEL.
- BOTTOM HOLE AT 945' FSL & 460' FEL, SEC. 22.
- VIC 21E-20-12N TO BE AT 2247' FNL & 423' FEL.
- BOTTOM HOLE AT 505' FSL & 460' FEL, SEC. 22.
- VIC 20W-20-2N TO BE AT 1924' FNL & 269' FEL.
- BOTTOM HOLE AT 440' FNL & 460' FWL, SEC. 19.
- VIC 20W-20-3N TO BE AT 1952' FNL & 269' FEL.
- BOTTOM HOLE AT 880' FNL & 460' FWL, SEC. 19.
- VIC 20W-20-4C TO BE AT 1980' FNL & 270' FEL.
- BOTTOM HOLE AT 1320' FNL & 460' FWL, SEC. 19.
- VIC 20W-20-5N TO BE AT 2008' FNL & 270' FEL.
- BOTTOM HOLE AT 1760' FNL & 460' FWL, SEC. 19.
- VIC 20W-20-6N TO BE AT 2036' FNL & 271' FEL.
- BOTTOM HOLE AT 2200' FNL & 460' FWL, SEC. 19.
- VIC 20W-20-7C TO BE AT 2064' FNL & 271' FEL.
- BOTTOM HOLE AT 2640' FNL & 460' FWL, SEC. 19.
- VIC 20W-20-8N TO BE AT 2092' FNL & 271' FEL.
- BOTTOM HOLE AT 2207' FSL & 460' FWL, SEC. 19.
- VIC 20W-20-9N TO BE AT 2120' FNL & 272' FEL.
- BOTTOM HOLE AT 1767' FSL & 460' FWL, SEC. 19.
- VIC 20W-20-10C TO BE AT 2148' FNL & 272' FEL.
- BOTTOM HOLE AT 1327' FSL & 460' FWL, SEC. 19.
- VIC 20W-20-11N TO BE AT 2176' FNL & 272' FEL.
- BOTTOM HOLE AT 887' FSL & 460' FWL, SEC. 19.
- VIC 20W-20-12N TO BE AT 2204' FNL & 273' FEL.
- BOTTOM HOLE AT 447' FSL & 460' FWL, SEC. 19.
- VIC 20W-20-13C TO BE AT 2232' FNL & 273' FEL.
- BOTTOM HOLE AT 7' FSL & 460' FWL, SEC. 19.
- VIC 29W-20-1N TO BE AT 2260' FNL & 273' FEL.
- BOTTOM HOLE AT 440' FNL & 460' FWL, SEC. 30.
- VIC 29W-20-2N TO BE AT 2288' FNL & 274' FEL.
- BOTTOM HOLE AT 880' FNL & 460' FWL, SEC. 30.

LEGEND

- = EXISTING MONUMENT
- = CALCULATED POSITION
- = PROPOSED WELL
- ◆ = EXISTING WELL
- ▲ = LANDING POINT
- BHL = BOTTOM HOLE LOCATION