

**GREAT WESTERN OPERATING COMPANY  
WILSON 41-2  
NE 1/4 NE 1/4, SECTION 2, T3N, R68W, 6th P.M.  
WELD COUNTY, COLORADO**

DATE:

DESCRIPTION:

[illegible]



PHOTO: VIEW OF AS-DRILLED LOCATION

CAMERA ANGLE: NORTHERLY



PHOTO: VIEW OF AS-DRILLED LOCATION

CAMERA ANGLE: EASTERLY

## GREAT WESTERN OPERATING COMPANY

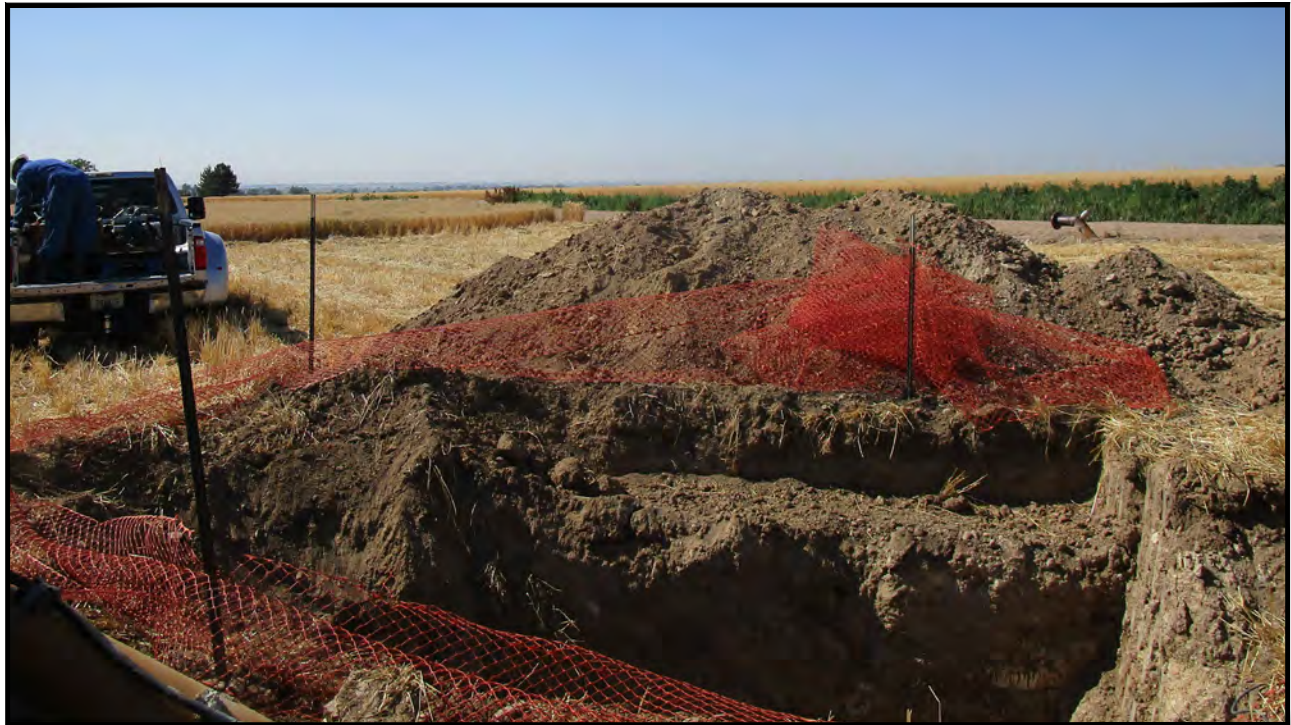
WILSON 41-2  
NE 1/4 NE 1/4, SECTION 2, T3N, R68W, 6th P.M.  
WELD COUNTY, COLORADO



UELS, LLC  
Corporate Office \* 85 South 200 East  
Vernal, UT 84078 \* (435) 789-1017

TAKEN BY	J.F.	07-10-18	
DRAWN BY	K.B.	07-11-18	
LOCATION PHOTOS			PHOTO 1





**PHOTO: VIEW OF AS-DRILLED LOCATION**

**CAMERA ANGLE: SOUTHERLY**



**PHOTO: VIEW OF AS-DRILLED LOCATION**

**CAMERA ANGLE: WESTERLY**

## **GREAT WESTERN OPERATING COMPANY**

**WILSON 41-2  
NE 1/4 NE 1/4, SECTION 2, T3N, R68W, 6th P.M.  
WELD COUNTY, COLORADO**



**UELS, LLC**  
Corporate Office \* 85 South 200 East  
Vernal, UT 84078 \* (435) 789-1017

TAKEN BY	J.F.	07-10-18	
DRAWN BY	K.B.	07-11-18	
<b>LOCATION PHOTOS</b>			<b>PHOTO 2</b>

**GREAT WESTERN OPERATING COMPANY**

WILSON 41-2  
NE1/4 NE1/4, SECTION 2, T3N, R68W, 6th P.M.  
WELD COUNTY, COLORADO  
DATE: 07-11-18 K.B.

Well Name	Lat: (NAD 83)	Long: (NAD 83)	PDOP	DATE COMPLETED	SURVEYED BY
WILSON 41-2	40°15'38.31" (40.260642)	104°57'48.93" (104.963590)	1.2	7/10/2018	JAMES FRESHWATER