

FRANE SURVEYING INC.

Physical Address: 34834 Annie Cir.
Mail to: Box 2372, Elizabeth, CO 80107
Ph. 303-243-0037
www.franesurveying.com
Job # 18-039-Bob 1-22 Production Facility

Frane Surveying, in accordance with a request from **Grand Mesa Operating** has determined the Center of **Bob 1-22 Production Facility** to be **599 Feet FNL**, and **105 Feet FWL**, (90° off Section lines) of Section **22**, Township **7s**, Range **55w** of the 6th Principal Meridian, **Lincoln County**, Colorado.

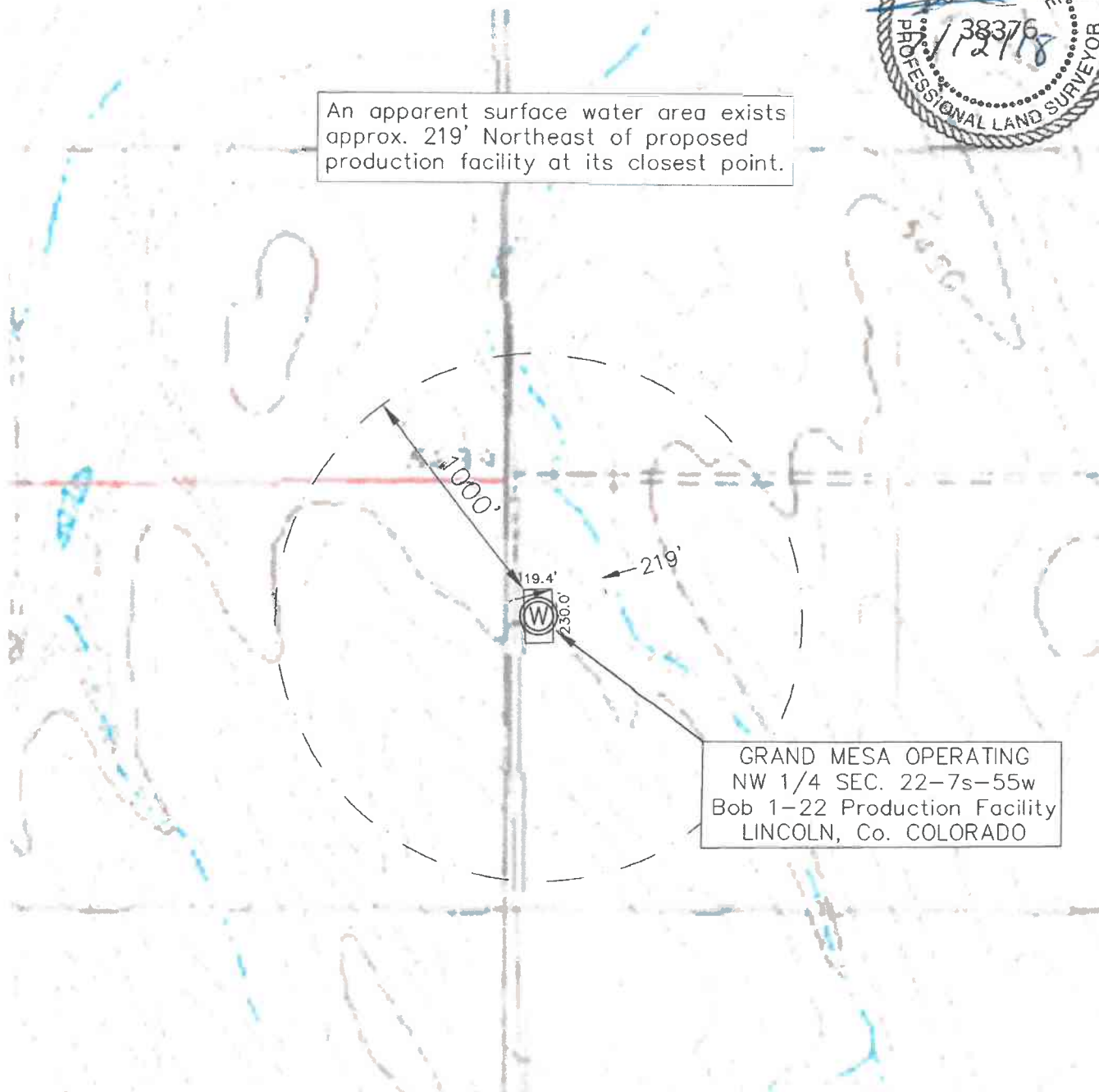
Date: Staked on 07/10/18 drawn on 07/12/18.

Re: Staked by Elijah Frane
Drawn: Drawn by Elijah Frane

1000' HYDROLOGY MAP



An apparent surface water area exists approx. 219' Northeast of proposed production facility at its closest point.



GRAND MESA OPERATING
NW 1/4 SEC. 22-7s-55w
Bob 1-22 Production Facility
LINCOLN, Co. COLORADO