

Tallman 1-35

Shut In

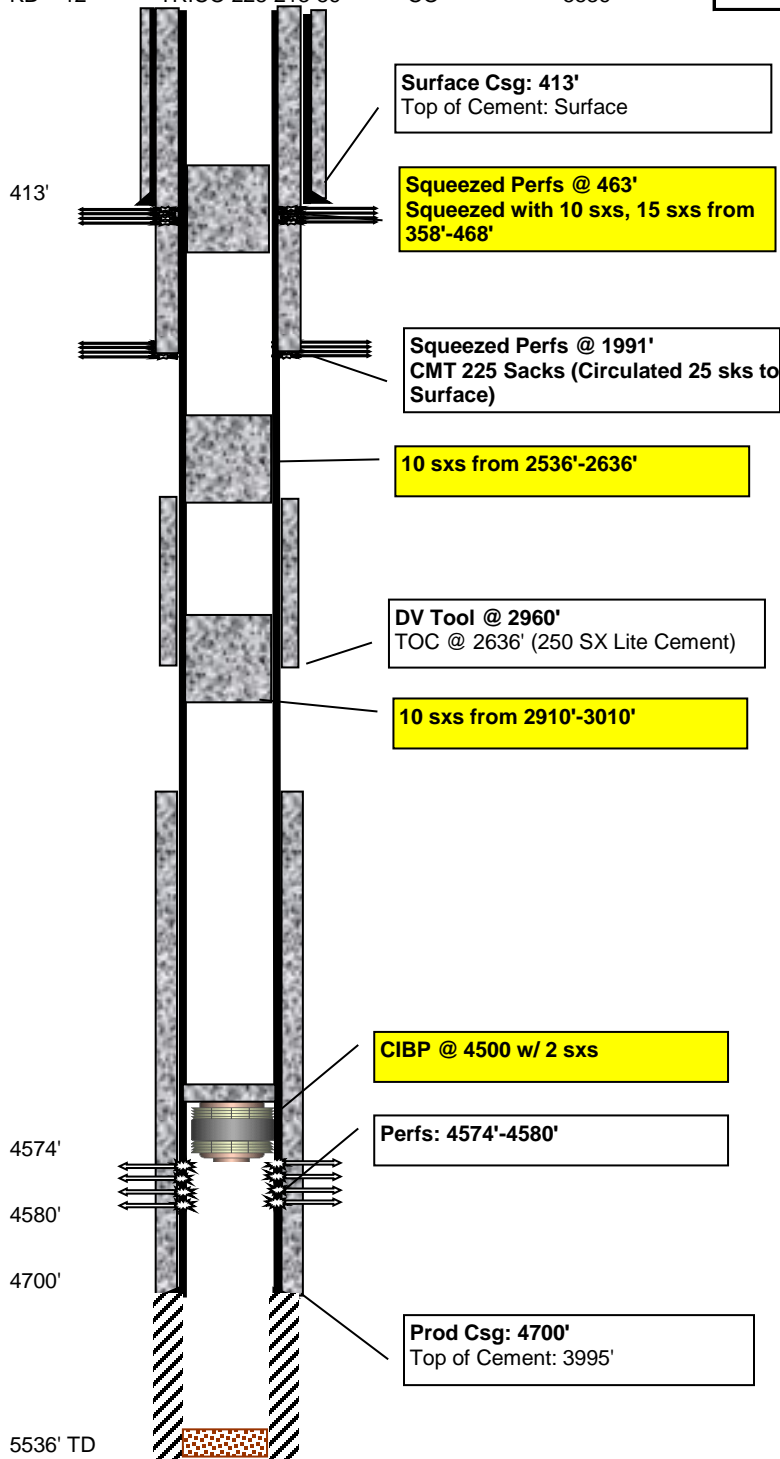
Today - 7/12/2018



API #	Lease ID	Permit #	County	KB	GL	Current production	Sec N/S	Sec E/W	Sec
05-017-07524		96-283	Cheyenne	4321'	4309'		900'	FNI 700'	FEL 35-16S-45W
	Pumping Unit	Motor	State	TD	PBTD	Initial production	Lease N	Lease E/W	Blk
KB = 12'	TRICO 228-213-86		CO	5536'					

Perforations

Top	Bottom	SPF	Stimulation	OPEN?
4574'	4580'	2 JSPF	Marmaton	YES



Total = 6'

Casing

Depth	Size	Wgt (#)	Grade	Description
413'	8-5/8"	24	J-55	
4700'	5-1/2"	15.5		

Cement

Casing	Sacks	TOC	Description
8-5/8"	300	surface	175 lite 3% CC; 125 common
5-1/2"	400	3995	150 common; 250 lite

Tubing

Description	Size	Length	Top	Bot
-------------	------	--------	-----	-----

Rods

Description	Size	Length	Top	Bot
-------------	------	--------	-----	-----

Tallman 1-35



Shut In

Today - 7/12/2018

API #	Lease ID	Permit #	County	KB	GL	Current production	Sec N/S	Sec E/W	Sec
05-017-07524		96-283	Cheyenne	4321'	4309'		900' FNI	700' FEL	35-16S-45W
	Pumping Unit	Motor	State	TD	PBTD	Initial production	Lease N	Lease E/W	Blk
KB = 12'	TRICO 228-213-86		CO	5536'					

Tallman 1-35



Shut In

Today - 7/12/2018

API #	Lease ID	Permit #	County	KB	GL	Current production	Sec N/S	Sec E/W	Sec
05-017-07524		96-283	Cheyenne	4321'	4309'		900' FNI	700' FEL	35-16S-45W
	Pumping Unit	Motor	State	TD	PBTD	Initial production	Lease N	Lease E/W	Blk
KB = 12'	TRICO 228-213-86		CO	5536'					