



KerrMcGee

# KERR MCGEE



01837710



Location: COLORADO Slot: LDS 23-24  
 Field: WELD COUNTY (KERR MCGEE) Well: LDS 23-24  
 Facility: SEC 24-T3N-R68W Wellbore: LDS 23-24 PWB

Plot reference wellpath is LDS 23-24 PWB	
True vertical depths are referenced to Ensign 5 (RT)	Grid System: NAD83 / Lambert Colorado State Planes, Northern Zone (501), US feet
Measured depths are referenced to Ensign 5 (RT)	North Reference: True north
Ensign 5 (RT) to Mean Sea Level: 4924 feet	Scale: True distance
Mean Sea Level to Mud line (Facility - SEC 24-T3N-R68W): 0 feet	Depths are in feet
Coordinates are in feet referenced to Slot	Created by: thomsuzo on 11/10/2006

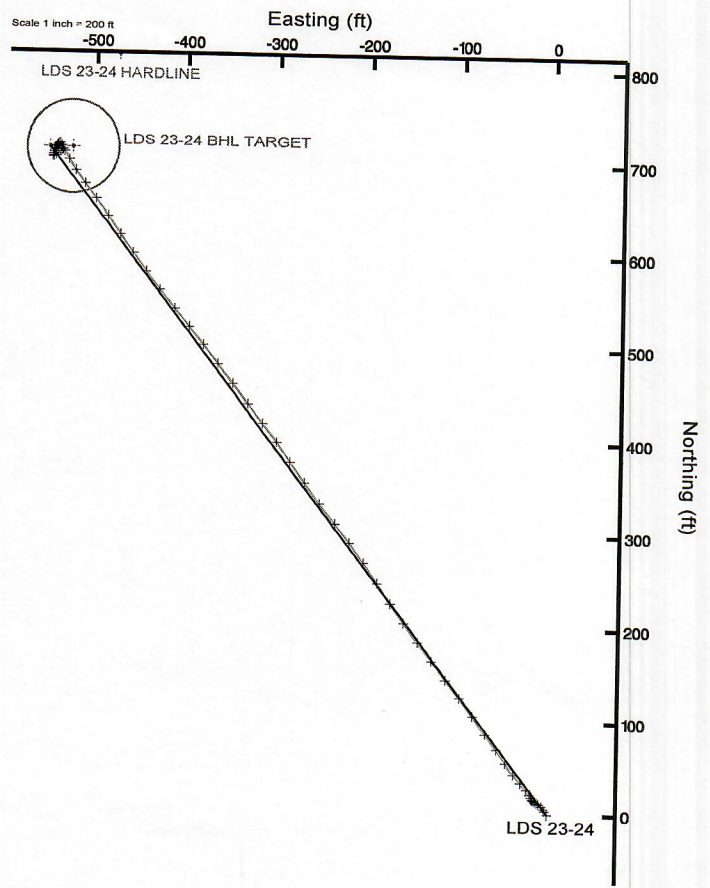
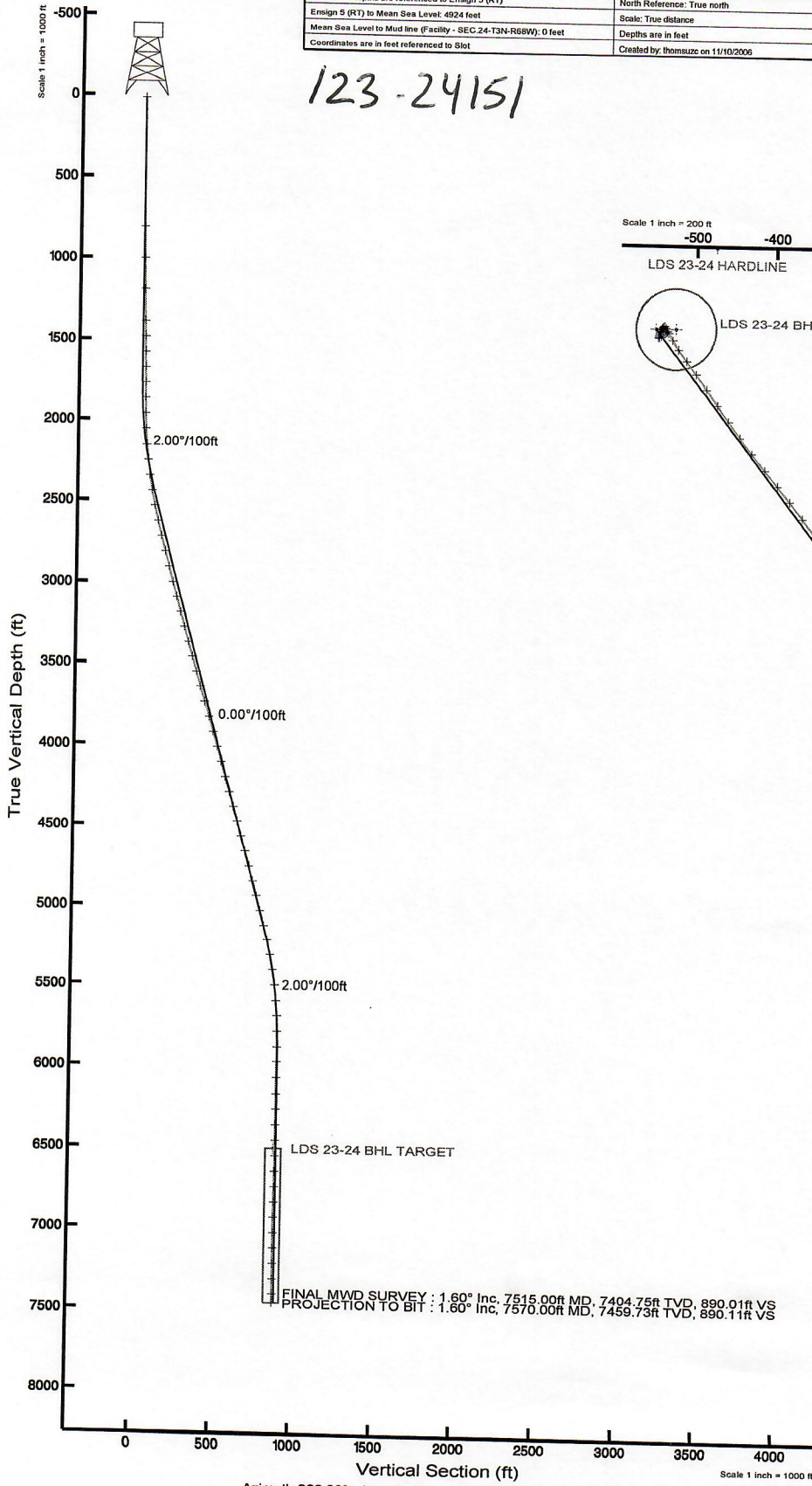
INTEQ RECEIVED

MAY -9 07

COGCC



123-24151



FINAL MWD SURVEY : 1.60° Inc, 7515.00ft MD, 7404.75ft TVD, 890.01ft VS  
 PROJECTION TO BIT : 1.60° Inc, 7570.00ft MD, 7459.73ft TVD, 890.11ft VS



BCGM (1945.0 to 2008.0) Dip: 67.07° Field: 53538.7 nT  
 Magnetic North is 9.57 degrees East of True North (at 11/09/06)

To correct azimuth from Magnetic to True add 9.57 degrees

Vertical Section (ft)  
 Azimuth 322.33° with reference 0.00 N, 0.00 E from wellhead

Scale 1 inch = 1000 ft



# Actual Wellpath Report

LDS 23-24 AWP

Page 1 of 4



INTEQ

## REFERENCE WELLPATH IDENTIFICATION

Operator	KERR MCGEE	Slot	LDS 23-24
Area	COLORADO	Well	LDS 23-24
Field	WELD COUNTY (KERR MCGEE)	Wellbore	LDS 23-24 AWB
Facility	SEC.24-T3N-R68W		

## REPORT SETUP INFORMATION

Projection System	NAD83 / Lambert Colorado State Planes, Northern Zone (501), US feet	Software System	WellArchitect™ 1.2
North Reference	True	User	Thomsuze
Scale	0.999957	Report Generated	11/10/06 at 15:11:41
Wellbore last revised	11/08/06	Database/Source file	WA_Denver/LDS_23-24

## WELLPATH LOCATION

	Local coordinates		Grid coordinates		Geographic coordinates	
	North [feet]	East [feet]	Easting [US feet]	Northing [US feet]	Latitude [°]	Longitude [°]
Slot Location	-3085.62	-483.22	3153762.90	1318427.39	40 12 22.212N	104 56 58.128W
Facility Reference Pt			3154226.88	1321515.82	40 12 52.704N	104 56 51.900W
Field Reference Pt			3197771.84	1268891.29	40 04 09.600N	104 47 36.000W

## WELLPATH DATUM

Calculation method	Minimum curvature	Ensign 5 (RT) to Facility Vertical Datum	4924.00 feet
Horizontal Reference Pt	Slot	Ensign 5 (RT) to Mean Sea Level	4924.00 feet
Vertical Reference Pt	Ensign 5 (RT)	Facility Vertical Datum to Mud Line (Facility)	0.00 feet
MD Reference Pt	Ensign 5 (RT)	Section Origin	N 0.00, E 0.00 ft
Field Vertical Reference	Mean Sea Level	Section Azimuth	322.33°



# Actual Wellpath Report

LDS 23-24 AWP

Page 2 of 4



INTEQ

## REFERENCE WELLPATH IDENTIFICATION

Operator	KERR MCGEE	Slot	LDS 23-24
Area	COLORADO	Well	LDS 23-24
Field	WELD COUNTY (KERR MCGEE)	Wellbore	LDS 23-24 AWB
Facility	SEC.24-T3N-R68W		

## WELLPATH DATA (71 stations) † = interpolated/extrapolated station

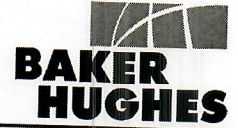
MD [feet]	Inclination [°]	Azimuth [°]	TVD [feet]	Vert Sect [feet]	North [feet]	East [feet]	DLS [°/100ft]	Log Comment
0.00†	0.000	0.000	0.00	0.00	0.00	0.00	0.00	
14.00	0.000	0.000	14.00	0.00	0.00	0.00	0.00	
805.00	0.700	326.300	804.98	4.82	4.02	-2.68	0.09	
998.00	0.900	327.700	997.96	7.51	6.28	-4.15	0.10	
1191.00	1.100	315.800	1190.93	10.86	8.89	-6.25	0.15	
1382.00	1.400	303.500	1381.89	14.89	11.49	-9.47	0.21	
1478.00	1.300	300.300	1477.86	17.00	12.69	-11.39	0.13	
1573.00	1.300	301.000	1572.84	19.01	13.79	-13.24	0.02	
1669.00	1.100	307.400	1668.81	20.91	14.91	-14.91	0.25	
1766.00	0.500	279.600	1765.81	22.12	15.55	-16.07	0.72	
1862.00	0.800	326.000	1861.80	23.10	16.17	-16.85	0.61	
1958.00	1.300	337.200	1957.78	24.82	17.73	-17.65	0.56	
2054.00	3.000	328.800	2053.71	28.37	20.88	-19.37	1.80	
2151.00	4.900	322.800	2150.48	35.03	26.35	-23.19	2.00	
2246.00	6.500	316.900	2245.01	44.45	33.51	-29.32	1.79	
2342.00	8.000	319.300	2340.24	56.53	42.55	-37.39	1.59	
2439.00	10.100	327.400	2436.03	71.74	54.83	-46.38	2.53	
2534.00	11.700	323.900	2529.31	89.67	69.63	-56.54	1.82	
2630.00	13.600	321.800	2622.98	110.69	86.37	-69.26	2.04	
2726.00	14.800	325.300	2716.04	134.22	105.32	-83.22	1.54	
2822.00	15.000	322.100	2808.82	158.89	125.20	-97.83	0.88	
2918.00	14.900	322.100	2901.57	183.65	144.75	-113.04	0.10	
3015.00	15.100	321.800	2995.26	208.76	164.52	-128.52	0.22	
3111.00	15.500	321.100	3087.86	234.09	184.33	-144.30	0.46	
3207.00	15.400	323.900	3180.39	259.65	204.61	-159.87	0.78	
3303.00	15.300	326.000	3272.97	285.04	225.41	-174.46	0.59	
3399.00	15.700	325.600	3365.48	310.64	246.63	-188.88	0.43	
3494.00	16.400	324.600	3456.77	336.88	268.16	-203.91	0.79	
3590.00	16.000	323.500	3548.96	363.65	289.85	-219.63	0.53	
3685.00	15.700	319.700	3640.35	389.58	310.17	-235.74	1.14	
3781.00	17.100	323.200	3732.45	416.67	331.38	-252.59	1.78	
3877.00	16.800	324.900	3824.28	444.64	354.04	-269.03	0.60	
3973.00	16.000	324.600	3916.37	471.72	376.17	-284.67	0.84	
4069.00	15.100	324.200	4008.85	497.44	397.10	-299.65	0.94	
4165.00	15.600	320.700	4101.43	522.84	417.23	-315.14	1.10	
4262.00	15.900	322.100	4194.79	549.16	437.81	-331.56	0.50	
4358.00	16.900	322.100	4286.88	576.27	459.19	-348.21	1.04	
4452.00	16.100	322.500	4377.01	602.96	480.32	-364.54	0.86	
4548.00	15.000	320.700	4469.50	628.70	500.49	-380.51	1.25	
4644.00	15.100	320.700	4562.20	653.61	519.78	-396.30	0.10	



# Actual Wellpath Report

LDS 23-24 AWP

Page 3 of 4



INTEQ

## REFERENCE WELLPATH IDENTIFICATION

Operator	KERR MCGEE	Slot	LDS 23-24
Area	COLORADO	Well	LDS 23-24
Field	WELD COUNTY (KERR MCGEE)	Wellbore	LDS 23-24 AWB
Facility	SEC.24-T3N-R68W		

## WELLPATH DATA (71 stations) † = interpolated/extrapolated station

MD [feet]	Inclination [°]	Azimuth [°]	TVD [feet]	Vert Sect [feet]	North [feet]	East [feet]	DLS [°/100ft]	Log Comment
4739.00	15.600	320.400	4653.81	678.75	539.20	-412.28	0.53	
4836.00	15.700	320.700	4747.22	704.90	559.40	-428.91	0.13	
4931.00	14.700	324.200	4838.90	729.80	579.13	-444.10	1.43	
5028.00	14.600	324.600	4932.74	754.32	599.08	-458.38	0.15	
5124.00	14.700	324.200	5025.62	778.58	618.82	-472.51	0.15	
5220.00	14.700	324.600	5118.48	802.92	638.62	-486.69	0.11	
5316.00	13.000	324.200	5211.68	825.89	657.31	-500.07	1.77	
5412.00	11.400	323.500	5305.51	846.17	673.70	-512.03	1.67	
5507.00	9.400	324.600	5398.95	863.31	687.57	-522.11	2.12	
5603.00	7.300	332.700	5493.93	877.14	699.38	-529.45	2.50	
5698.00	5.100	327.000	5588.37	887.29	708.29	-534.52	2.40	
5794.00	3.000	332.000	5684.12	894.02	714.08	-538.02	2.22	
5888.00	0.700	306.000	5778.07	897.00	716.59	-539.64	2.54	
5985.00	1.100	233.200	5875.06	897.58	716.38	-540.86	1.15	
6081.00	0.600	208.900	5971.05	897.39	715.39	-541.84	0.63	
6177.00	0.700	203.300	6067.04	896.91	714.41	-542.32	0.12	
6273.00	0.700	210.300	6163.04	896.40	713.37	-542.85	0.09	
6369.00	0.800	212.800	6259.03	895.96	712.30	-543.51	0.11	
6465.00	1.000	211.700	6355.02	895.44	711.02	-544.31	0.21	
6561.00	0.600	215.400	6451.01	895.00	709.90	-545.04	0.42	
6656.00	0.800	206.100	6546.00	894.56	708.90	-545.62	0.24	
6753.00	1.200	205.000	6642.98	893.80	707.37	-546.35	0.41	
6848.00	1.300	199.000	6737.96	892.75	705.45	-547.12	0.17	
6945.00	1.100	188.500	6834.94	891.50	703.49	-547.61	0.31	
7041.00	0.700	122.800	6930.93	890.31	702.26	-547.26	1.08	
7137.00	1.200	63.400	7026.92	889.56	702.39	-545.87	1.08	
7233.00	1.800	52.700	7122.89	889.36	703.76	-543.77	0.69	
7329.00	1.700	47.900	7218.84	889.46	705.63	-541.51	0.18	
7424.00	1.900	45.800	7313.79	889.75	707.67	-539.34	0.22	
7515.00	1.600	48.300	7404.75	890.01	709.56	-537.31	0.34	
7570.00†	1.600	48.300	7459.73	890.11	710.59	-536.16	0.00	

## HOLE & CASING SECTIONS Ref Wellbore: LDS 23-24 AWB Ref Wellpath: LDS 23-24 AWP

String/Diameter	Start MD [feet]	End MD [feet]	Interval [feet]	Start TVD [feet]	End TVD [feet]	Start N/S [feet]	Start E/W [feet]	End N/S [feet]	End E/W [feet]
12.25in Open Hole	14.00	770.00	756.00	14.00	769.98	0.00	0.00	3.67	-2.45
8.625in Casing Surface	14.00	770.00	756.00	14.00	769.98	0.00	0.00	3.67	-2.45
7.78in Open Hole	14.00	7570.00	7556.00	14.00	7459.73	0.00	0.00	710.59	-536.16



# Actual Wellpath Report

LDS 23-24 AWP

Page 4 of 4



INTEQ

## REFERENCE WELLPATH IDENTIFICATION

Operator	KERR MCGEE	Slot	LDS 23-24
Area	COLORADO	Well	LDS 23-24
Field	WELD COUNTY (KERR MCGEE)	Wellbore	LDS 23-24 AWB
Facility	SEC.24-T3N-R68W		

## TARGETS

Name	MD [feet]	TVD [feet]	North [feet]	East [feet]	Grid East [us survey feet]	Grid North [us survey feet]	Latitude [°]	Longitude [°]	Shape
LDS 23-24 HARDLINE		0.00	814.00	-475.50	3153282.38	1319238.39	40 12 30.256N	104 57 04.257W	point
LDS 23-24 50' RADIUS TARGET		6500.00	713.00	-525.50	3153233.01	1319137.08	40 12 29.258N	104 57 04.901W	circle
LDS 23-24 BHL TARGET		6500.00	713.00	-550.50	3153208.01	1319136.93	40 12 29.258N	104 57 05.223W	point

## WELLPATH COMPOSITION Ref Wellbore: LDS 23-24 AWB Ref Wellpath: LDS 23-24 AWP

Start MD [feet]	End MD [feet]	Positional Uncertainty Model	Log Name/Comment	Wellbore
14.00	7515.00	NaviTrak (Standard)	BHI MWD <805-7570>	LDS 23-24 AWB
7515.00	7570.00	Blind Drilling (std)	Projection to bit	LDS 23-24 AWB

## WELLPATH COMMENTS

MD [feet]	Inclination [degrees]	Azimuth [degrees]	TVD [feet]	Comment
7515.00	1.600	48.300	7404.75	FINAL MWD SURVEY
7570.00	1.600	48.300	7459.73	PROJECTION TO BIT