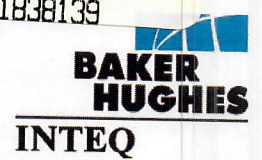


123-27358

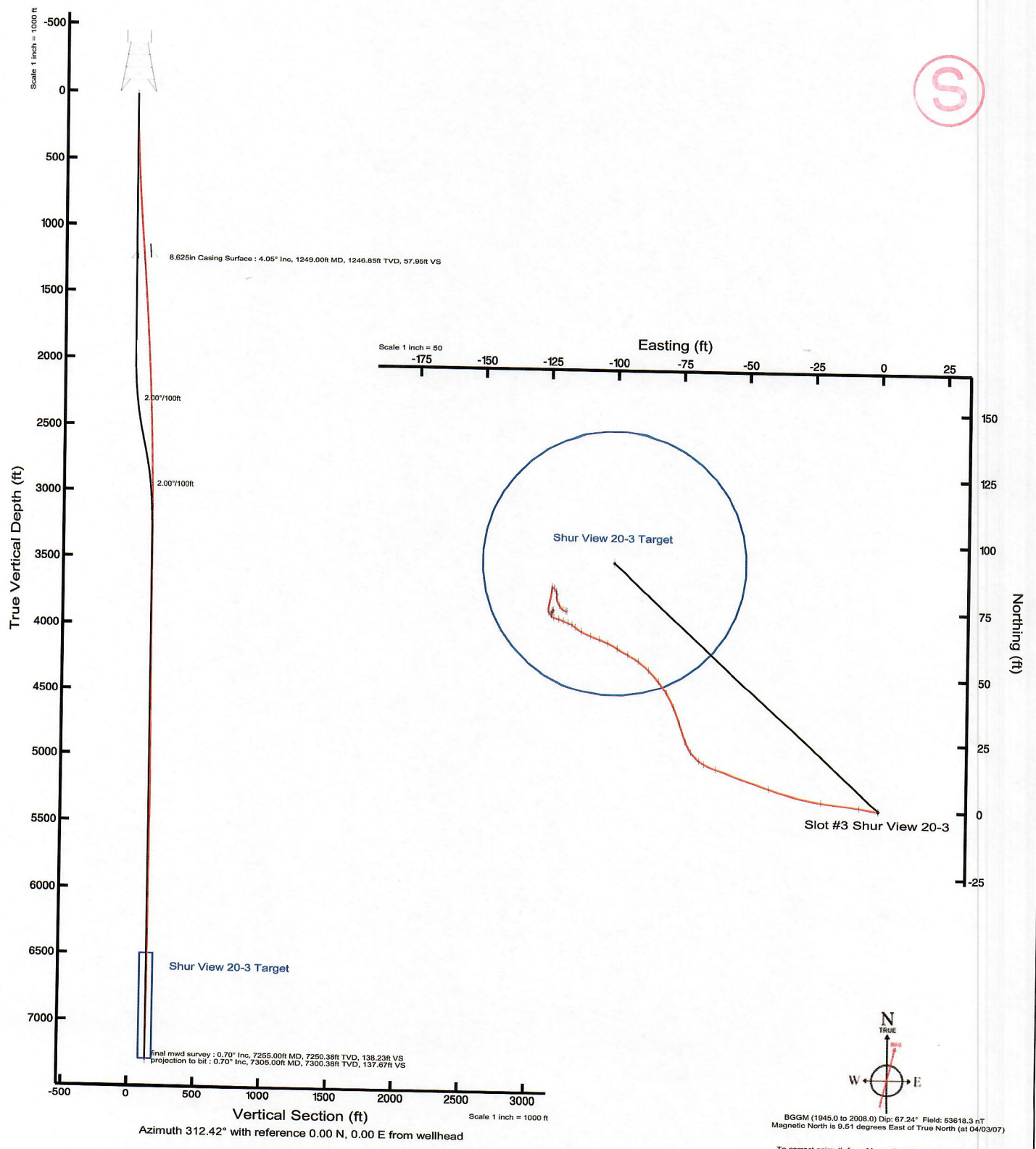


# KERR MCGEE



Location: COLORADO  
Field: WELD COUNTY (KERR MCGEE)  
Facility: SEC.3-T5N-R67W  
Slot: Slot #3 Shur View 20-3  
Well: Shur View 20-3  
Wellbore: Shur View 20-3 PWB

Plot reference wellpath is Shur View 20-3 PWB	
True vertical depths are referenced to Ensign 17 (RT)	Grid System: NAD83 / Lambert Colorado State Planes, Northern Zone (501), US feet
Measured depths are referenced to Ensign 17 (RT)	North Reference: True north
Ensign 17 (RT) to Mean Sea Level: 4874 feet	Scale: True distance
Mean Sea Level to Mud line (Facility - SEC.3-T5N-R67W): 0 feet	Depths are in feet
Coordinates are in feet referenced to Slot	Created by: Suzanne Thompson on 8/30/2007







# Actual Wellpath Report

Shur View 20-3 AWP

Page 1 of 3



## REFERENCE WELLPATH IDENTIFICATION

Operator	KERR MCGEE	Slot	Slot #3 Shur View 20-3
Area	COLORADO	Well	Shur View 20-3
Field	WELD COUNTY (KERR MCGEE)	Wellbore	Shur View 20-3 AWB
Facility	SEC.3-T5N-R67W		

## REPORT SETUP INFORMATION

Projection System	NAD83 / Lambert Colorado State Planes, Northern Zone (501), US feet	Software System	WellArchitect™ 1.2
North Reference	True	User	Suzanne Thompson
Scale	0.999961	Report Generated	05/30/07 at 08:26:19
Wellbore last revised	05/30/07	Database/Source file	WA_Denver/Shur_Vi

## WELLPATH LOCATION

	Local coordinates		Grid coordinates		Geographic coordinates	
	North [feet]	East [feet]	Easting [US feet]	Northing [US feet]	Latitude [°]	Longitude [°]
Slot Location	-2134.70	3001.36	3174159.45	1398253.00	40 25 29.712N	104 52 27.984W
Facility Reference Pt			3171143.49	1400366.76	40 25 50.808N	104 53 06.792W
Field Reference Pt			3197771.84	1268891.29	40 04 09.600N	104 47 36.000W

## WELLPATH DATUM

Calculation method	Minimum curvature	Ensign 17 (RT) to Facility Vertical Datum	4874.00 feet
Horizontal Reference Pt	Slot	Ensign 17 (RT) to Mean Sea Level	4874.00 feet
Vertical Reference Pt	Ensign 17 (RT)	Facility Vertical Datum to Mud Line (Facility)	0.00 feet
MD Reference Pt	Ensign 17 (RT)	Section Origin	N 0.00, E 0.00 ft
Field Vertical Reference	Mean Sea Level	Section Azimuth	312.42°





# Actual Wellpath Report

Shur View 20-3 AWP

Page 2 of 3



INTEQ

## REFERENCE WELLPATH IDENTIFICATION

Operator	KERR MCGEE	Slot	Slot #3 Shur View 20-3
Area	COLORADO	Well	Shur View 20-3
Field	WELD COUNTY (KERR MCGEE)	Wellbore	Shur View 20-3 AWB
Facility	SEC.3-T5N-R67W		

## WELLPATH DATA (46 stations) † = interpolated/extrapolated station

MD [feet]	Inclination [°]	Azimuth [°]	TVD [feet]	Vert Sect [feet]	North [feet]	East [feet]	DLS [°/100ft]
0.00†	0.000	0.000	0.00	0.00	0.00	0.00	0.00
14.00	0.000	0.000	14.00	0.00	0.00	0.00	0.00
363.00	2.400	279.200	362.90	6.11	1.17	-7.21	0.69
657.00	3.300	276.700	656.53	18.13	3.14	-21.70	0.31
940.00	5.000	288.000	938.78	35.98	7.90	-41.52	0.66
1213.00	4.000	289.700	1210.94	55.59	14.79	-61.80	0.37
1281.00	4.100	295.300	1278.77	60.10	16.63	-66.23	0.60
1312.00	4.200	307.600	1309.69	62.29	17.79	-68.13	2.88
1375.00	4.000	324.500	1372.53	66.74	20.99	-71.23	1.94
1438.00	4.300	339.600	1435.37	70.99	24.99	-73.33	1.79
1533.00	4.400	342.800	1530.09	77.30	31.81	-75.65	0.28
1627.00	3.800	337.900	1623.85	83.23	38.14	-77.89	0.74
1723.00	3.500	328.000	1719.66	88.92	43.57	-80.64	0.73
1816.00	3.400	322.100	1812.49	94.37	48.16	-83.84	0.40
1910.00	3.400	314.300	1906.32	99.91	52.30	-87.54	0.49
2005.00	2.900	305.200	2001.18	105.11	55.66	-91.52	0.74
2099.00	3.000	296.300	2095.06	109.83	58.12	-95.67	0.50
2193.00	2.500	302.700	2188.95	114.21	60.31	-99.60	0.62
2287.00	2.400	295.000	2282.86	118.11	62.25	-103.11	0.37
2381.00	2.000	292.000	2376.79	121.53	63.70	-106.42	0.44
2477.00	2.200	287.000	2472.73	124.76	64.87	-109.73	0.28
2571.00	2.500	300.600	2566.65	128.40	66.44	-113.22	0.67
2666.00	1.000	315.000	2661.60	131.25	68.08	-115.59	1.63
2760.00	0.900	301.000	2755.59	132.80	69.04	-116.80	0.27
2854.00	1.100	288.000	2849.58	134.34	69.70	-118.29	0.32
2949.00	1.200	296.400	2944.56	136.13	70.42	-120.05	0.21
3042.00	1.200	284.400	3037.54	137.92	71.10	-121.87	0.27
3135.00	1.300	288.700	3130.52	139.75	71.68	-123.81	0.15
3230.00	0.800	11.300	3225.50	141.08	72.67	-124.70	1.51
3324.00	0.500	39.000	3319.50	141.44	73.64	-124.31	0.45
3514.00	0.200	332.600	3509.50	141.80	74.57	-123.95	0.24
3798.00	0.300	193.400	3793.49	141.91	74.29	-124.35	0.17
4083.00	0.200	219.000	4078.49	141.52	73.18	-124.83	0.05
4364.00	0.400	329.400	4359.49	142.42	73.64	-125.64	0.18
4647.00	1.100	14.300	4642.46	144.65	77.12	-125.47	0.31
4930.00	0.700	5.600	4925.43	146.97	81.48	-124.63	0.15
5212.00	0.000	269.000	5207.42	148.00	83.19	-124.46	0.25
5493.00	0.400	125.900	5488.42	147.02	82.62	-123.67	0.14
5775.00	0.300	181.800	5770.42	145.57	81.30	-122.89	0.12
6061.00	0.100	102.300	6056.41	144.86	80.50	-122.67	0.10





# Actual Wellpath Report

Shur View 20-3 AWP

Page 3 of 3



INTEQ

## REFERENCE WELLPATH IDENTIFICATION

Operator	KERR MCGEE	Slot	Slot #3 Shur View 20-3
Area	COLORADO	Well	Shur View 20-3
Field	WELD COUNTY (KERR MCGEE)	Wellbore	Shur View 20-3 AWB
Facility	SEC.3-T5N-R67W		

## WELLPATH DATA (46 stations) † = interpolated/extrapolated station

MD [feet]	Inclination [°]	Azimuth [°]	TVD [feet]	Vert Sect [feet]	North [feet]	East [feet]	DLS [°/100ft]
6343.00	0.200	212.000	6338.41	144.56	80.03	-122.69	0.09
6618.00	0.500	166.000	6613.41	143.47	78.46	-122.66	0.14
6910.00	0.500	145.300	6905.40	141.17	76.18	-121.63	0.06
7162.00	0.450	128.000	7157.39	139.11	74.66	-120.22	0.06
7255.00	0.700	108.700	7250.38	138.23	74.26	-119.39	0.34
7305.00†	0.700	108.700	7300.38	137.67	74.06	-118.82	0.00

## HOLE & CASING SECTIONS Ref Wellbore: Shur View 20-3 AWB Ref Wellpath: Shur View 20-3 AWP

String/Diameter	Start MD [feet]	End MD [feet]	Interval [feet]	Start TVD [feet]	End TVD [feet]	Start N/S [feet]	Start E/W [feet]	End N/S [feet]	End E/W [feet]
8.625in Casing Surface	14.00	1249.00	1235.00	14.00	1246.85	0.00	0.00	15.70	-64.15

## TARGETS

Name	MD [feet]	TVD [feet]	North [feet]	East [feet]	Grid East [us survey feet]	Grid North [us survey feet]	Latitude [°]	Longitude [°]	Shape
Shur View 20-3 Target		6500.00	92.30	-101.00	3174057.81	1398344.58	40 25 30.624N	104 52 29.290W	circle

## WELLPATH COMPOSITION Ref Wellbore: Shur View 20-3 AWB Ref Wellpath: Shur View 20-3 AWP

Start MD [feet]	End MD [feet]	Positional Uncertainty Model	Log Name/Comment	Wellbore
14.00	7255.00	MTC (Collar, pre-2000) (Standard)	BHI MWD <363-7305>	Shur View 20-3 AWB
7255.00	7305.00	Blind Drilling (std)	Projection to bit	Shur View 20-3 AWB

## WELLPATH COMMENTS

MD [feet]	Inclination [degrees]	Azimuth [degrees]	TVD [feet]	Comment
7255.00	0.700	108.700	7250.38	final mwd survey
7305.00	0.700	108.700	7300.38	projection to bit



No.	Tool Type	Survey Depth (ft)	Incl (°)	Azimuth (°)	Course Lgth (ft)	rVD (ft)	VS (ft)	Coordinates		U/LS (°/100')	Bld Rate (°/100')	Wlk Rate (°/100')	Remarks
								N/S (ft)	E/W (ft)				
0	Tie In	0	0.00	0.00		0.00	0.00	0.00	N 0.00 W				RECEIVED
1	MWD	363	2.40	279.20	363	362.89	6.36	1.22	N 7.50 W	0.66	0.7	76.9	10-21-07
2	MWD	657	3.30	276.70	294	656.53	18.38	3.19	N 21.98 W	0.31	0.3	-0.9	
3	MWD	940	5.00	288.00	283	938.78	36.22	7.95	N 41.81 W	0.66	0.6	4.0	COGCC
4	MWD	1213	4.00	289.70	273	1210.93	55.84	14.83	N 62.08 W	0.37	-0.4	0.6	
5	MWD	1281	4.10	295.30	68	1278.77	60.35	16.67	N 66.52 W	0.60	0.1	8.2	
6	MWD	1312	4.20	307.60	31	1309.68	62.54	17.84	N 68.42 W	2.88	0.3	39.7	
7	MWD	1375	4.00	324.50	63	1372.53	66.99	21.04	N 71.52 W	1.94	-0.3	26.8	
8	MWD	1438	4.30	339.60	63	1435.36	71.24	25.04	N 73.62 W	1.79	0.5	24.0	
9	MWD	1533	4.40	342.80	95	1530.09	77.55	31.86	N 75.94 W	0.28	0.1	3.4	
10	MWD	1627	3.80	337.90	94	1623.85	83.47	38.19	N 78.18 W	0.74	-0.6	-5.2	
11	MWD	1723	3.50	328.00	96	1719.65	89.17	43.62	N 80.93 W	0.73	-0.3	-10.3	
12	MWD	1816	3.40	322.10	93	1812.49	94.62	48.20	N 84.13 W	0.40	-0.1	-6.3	
13	MWD	1910	3.40	314.30	94	1906.32	100.15	52.35	N 87.83 W	0.49	0.0	-8.3	
14	MWD	2005	2.90	305.20	95	2001.18	105.35	55.70	N 91.81 W	0.74	-0.5	-9.6	
15	MWD	2099	3.00	296.30	94	2095.05	110.08	58.16	N 95.96 W	0.50	0.1	-9.5	
16	MWD	2193	2.50	302.70	94	2188.95	114.46	60.36	N 99.89 W	0.62	-0.5	6.8	
17	MWD	2287	2.40	295.00	94	2282.86	118.36	62.30	N 103.40 W	0.37	-0.1	-8.2	
18	MWD	2381	2.00	292.00	94	2376.79	121.77	63.75	N 106.70 W	0.44	-0.4	-3.2	
19	MWD	2477	2.20	287.00	96	2472.73	125.01	64.91	N 110.02 W	0.28	0.2	-5.2	
20	MWD	2571	2.50	300.60	94	2566.65	128.64	66.48	N 113.51 W	0.67	0.3	14.5	
21	MWD	2666	1.00	315.00	95	2661.60	131.50	68.13	N 115.88 W	1.63	-1.6	15.2	
22	MWD	2760	0.90	301.00	94	2755.59	133.04	69.09	N 117.09 W	0.27	-0.1	-14.9	
23	MWD	2854	1.10	288.00	94	2849.57	134.59	69.74	N 118.58 W	0.32	0.2	-13.8	
24	MWD	2949	1.20	296.40	95	2944.55	136.37	70.47	N 120.34 W	0.21	0.1	8.8	
25	MWD	3042	1.20	284.40	93	3037.53	138.17	71.14	N 122.16 W	0.27	0.0	-12.9	
26	MWD	3135	1.30	288.70	93	3130.51	140.00	71.72	N 124.10 W	0.15	0.1	4.6	
27	MWD	3230	0.80	11.30	95	3225.50	141.32	72.72	N 124.99 W	1.51	-0.5	-292.0	
28	MWD	3324	0.50	39.00	94	3319.49	141.69	73.68	N 124.60 W	0.45	-0.3	29.5	
29	MWD	3514	0.20	332.60	190	3509.49	142.05	74.62	N 124.23 W	0.24	-0.2	154.5	
30	MWD	3798	0.30	193.40	284	3793.49	142.15	74.34	N 124.64 W	0.17	0.0	-49.0	
31	MWD	4083	0.20	219.00	285	4078.49	141.76	73.23	N 125.12 W	0.05	0.0	9.0	
32	MWD	4364	0.40	329.40	281	4359.48	142.67	73.69	N 125.93 W	0.18	0.1	39.3	
33	MWD	4647	1.10	14.30	283	4642.46	144.90	77.17	N 125.76 W	0.31	0.2	-111.3	
34	MWD	4930	0.70	5.60	283	4925.42	147.21	81.52	N 124.92 W	0.15	-0.1	-3.1	
35	MWD	5212	0.00	269.00	282	5207.42	148.24	83.24	N 124.75 W	0.25	-0.2	93.4	
36	MWD	5493	0.40	125.90	281	5488.42	147.27	82.66	N 123.96 W	0.14	0.1	-50.9	
37	MWD	5775	0.30	181.80	282	5770.41	145.81	81.35	N 123.18 W	0.12	0.0	19.8	
38	MWD	6061	0.10	102.30	286	6056.41	145.11	80.55	N 122.96 W	0.10	-0.1	-27.8	
39	MWD	6343	0.20	212.00	282	6338.41	144.81	80.08	N 122.98 W	0.09	0.0	38.9	
40	MWD	6618	0.50	166.00	275	6613.40	143.72	78.51	N 122.95 W	0.14	0.1	-16.7	
41	MWD	6910	0.50	145.30	292	6905.39	141.42	76.22	N 121.91 W	0.06	0.0	-7.1	
42	MWD	7162	0.45	128.00	252	7157.38	139.36	74.71	N 120.51 W	0.06	0.0	-6.9	
43	MWD	7255	0.70	108.70	93	7250.38	138.47	74.30	N 119.68 W	0.34	0.3	-20.8	
44	MWD	7305	0.70	108.70	50	7300.38	137.91	74.11	N 119.10 W	0.00	0.0	0.0	