

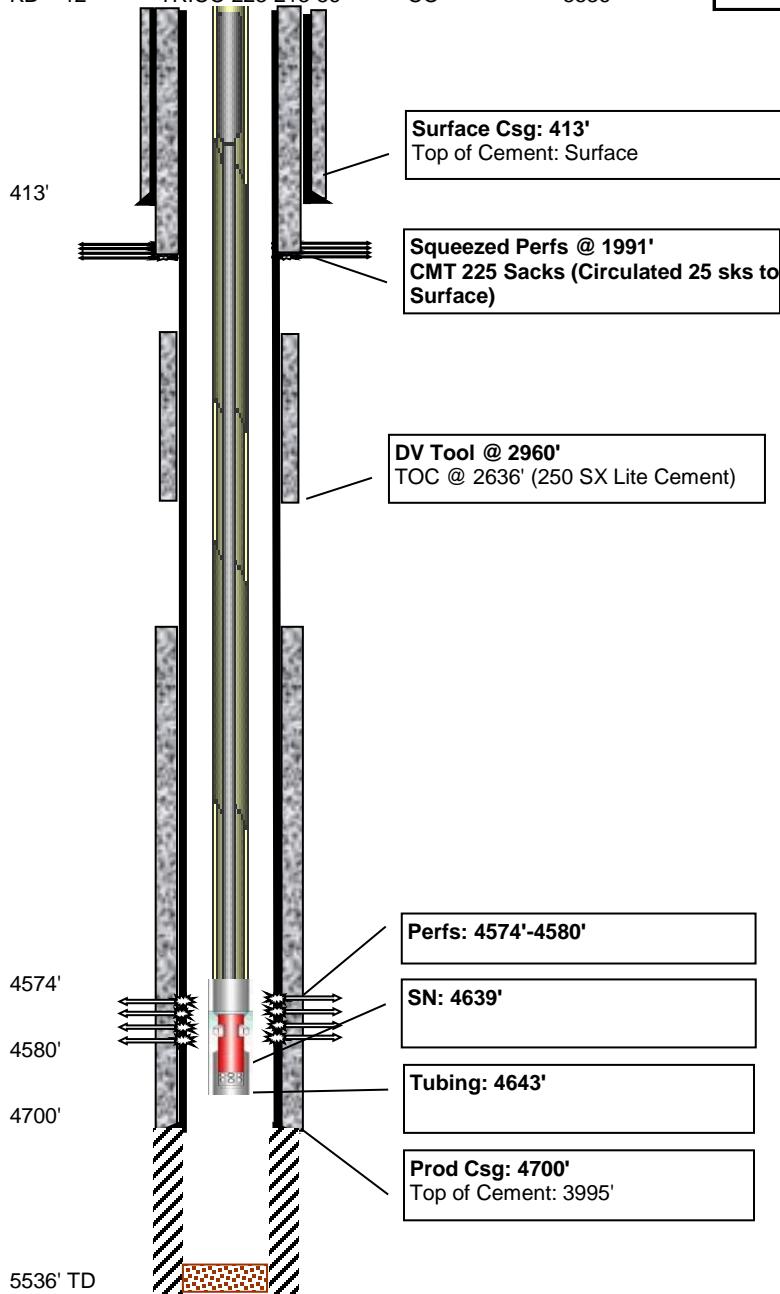
Tallman 1-35

Shut In

Today - 7/11/2018



API #	Lease ID	Permit #	County	KB	GL	Current production	Sec N/S	Sec E/W	Sec
05-017-07524		96-283	Cheyenne	4321'	4309'		900' FNI	700' FEL	35-16S-45W
	Pumping Unit	Motor	State	TD	PBDT	Initial production	Lease N	Lease E/W	Blk
KB = 12'	TRICO 228-213-86		CO	5536'					



Perforations

Top	Bottom	SPF	Stimulation	OPEN?
4574'	4580'	2 JSPF	Marmaton	YES

Total = 6'

Casing

Depth	Size	Wgt (#)	Grade	Description
413'	8-5/8"	24	J-55	
4700'	5-1/2"	15.5		

Cement

Casing	Sacks	TOC	Description
8-5/8"	300	surface	175 lite 3% CC; 125 common
5-1/2"	400	3995	150 common; 250 lite

Tubing

Description	Size	Length	Top	Bot
147 jts tbg	2-7/8"	4532'	0'	4532'
TAC		3'	4532'	4535'
3 jts tbg		92'	4535'	4627'
SN		1'	4627'	4628'
MA		15'	4628'	4643'

Rods

Description	Size	Length	Top	Bot
Polished Rod	1-1/4"	22'	-3'	19'
2 Pony Rods	7/8"	14'	19'	33'
87 Rods	7/8"	2075'	33'	2108'
95 Rods	3/4"	2375'	2108'	4483'
6 Rods	7/8"	150'	4483'	4633'
Pony Rod	7/8"	2'	4633'	4635'
Pump	2-1/2"	18'	4635'	4653'

Pump

2-1/2" X 1-3/4" X 18' RHBC

Tallman 1-35



Shut In

Today - 7/11/2018

API #	Lease ID	Permit #	County	KB	GL	Current production	Sec N/S	Sec E/W	Sec
05-017-07524		96-283	Cheyenne	4321'	4309'		900' FNI	700' FEL	35-16S-45W
	Pumping Unit	Motor	State	TD	PBTD	Initial production	Lease N	Lease E/W	Blk
KB = 12'	TRICO	228-213-86	CO	5536'					

Tallman 1-35



Shut In

Today - 7/11/2018

API #	Lease ID	Permit #	County	KB	GL	Current production	Sec N/S	Sec E/W	Sec
05-017-07524		96-283	Cheyenne	4321'	4309'		900' FNI	700' FEL	35-16S-45W
	Pumping Unit	Motor	State	TD	PBTD	Initial production	Lease N	Lease E/W	Blk
KB = 12'	TRICO	228-213-86	CO	5536'					