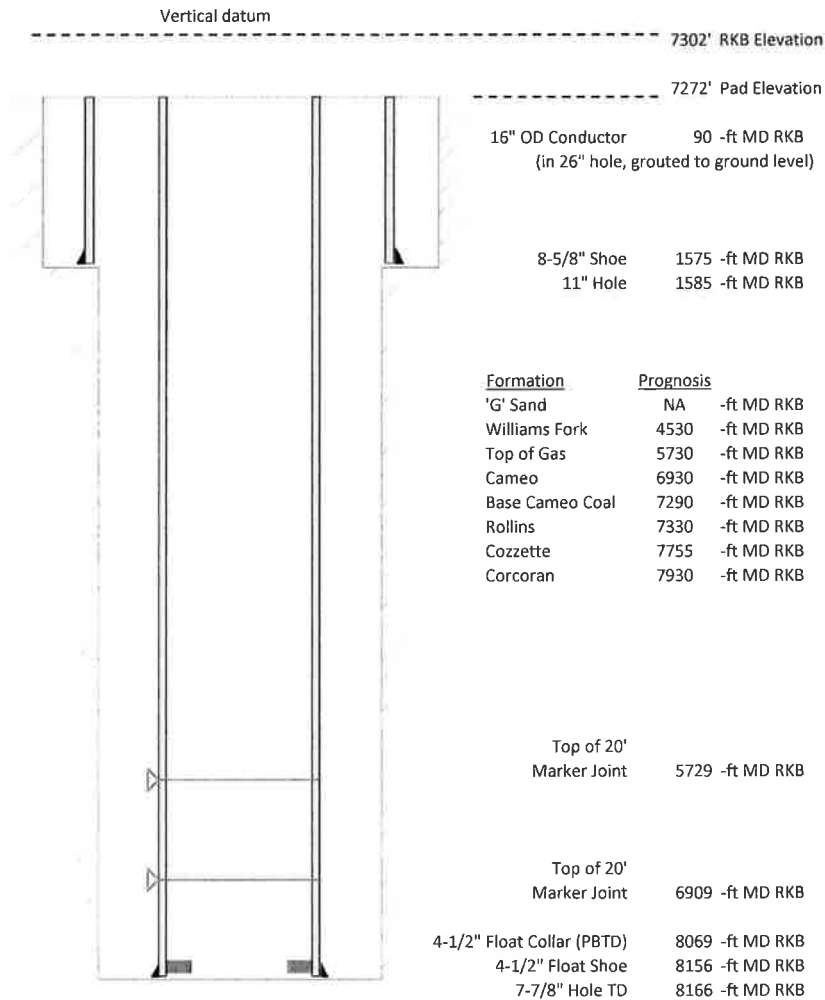


**Laramie Energy, LLC**  
**Gunderson 0994-13-16W**  
**Slot A-1**  
**H&P 522 (30-ft KB)**

API # : 05-077-10536-00  
 NE/4 SW/4 S13/T9S/R94W/6th PM  
 Mesa County, CO  
 Date of diagram : 5/12/2018



**Cementing details**

| 8-5/8" 24# Surface Csg    | Lead | Tail |
|---------------------------|------|------|
| Density (ppg)             | 12.3 | 12.8 |
| Volume (sx)               |      |      |
| Yield (cf/sx)             | 2.45 | 2.18 |
| Top (ft RKB)              |      |      |
| Bottom (ft RKB)           |      | 1575 |
| Returns (full or partial) |      |      |

| 4-1/2" 11.6# Prod Csg     | Lead | Tail |
|---------------------------|------|------|
| Density (ppg)             | 12.5 | 13.3 |
| Volume (sx)               | 689  | 449  |
| Yield (cf/sx)             | 1.94 | 1.73 |
| Est Top (ft RKB)          | 1030 | 5534 |
| Est Bottom (ft RKB)       | 5534 | 8156 |
| Returns (full or partial) | Full | Full |

| Displacement |
|--------------|
| 8.3 ppg      |
| 125.3 bbls   |

Other Remarks : 5 bbls cement to surface on surface job. 10 bbls spacer to surface on production job.