

Gunderson 0994-13-15W  
Mesa County, CO  
Q180512 & RM-180438  
Design #2

Company Name: Laramie Energy, LLC  
Gunderson 0994-13-15W  
Mesa County, CO  
Rig: H&P #522  
Created By: Will Jircik  
Date: 5/7/2018

PROJECT DETAILS:	Mesa County, CO
Geodetic System:	US State Plane 1983
Datum:	North American Datum 1983
Ellipsoid:	GRS 1980
Zone:	Colorado Central Zone
System Datum:	Mean Sea Level

T

M

Azimuths to True North

Magnetic North: 9.44°

Strength: 51306.4snT

Dip Angle: 65.41°

Date: 4/24/2018

Model: USER DEFINED

DESIGN TARGET DETAILS								
Name	TVD	+N/-S	+E/-W	Northing	Easting	Latitude	Longitude	Shape
PBHL - Gunderson 0994-13-15W	7582.0	64.9	-53.5	1533173.91	2339010.00	39.273973	-107.835163	Circle (Radius: 50.0)

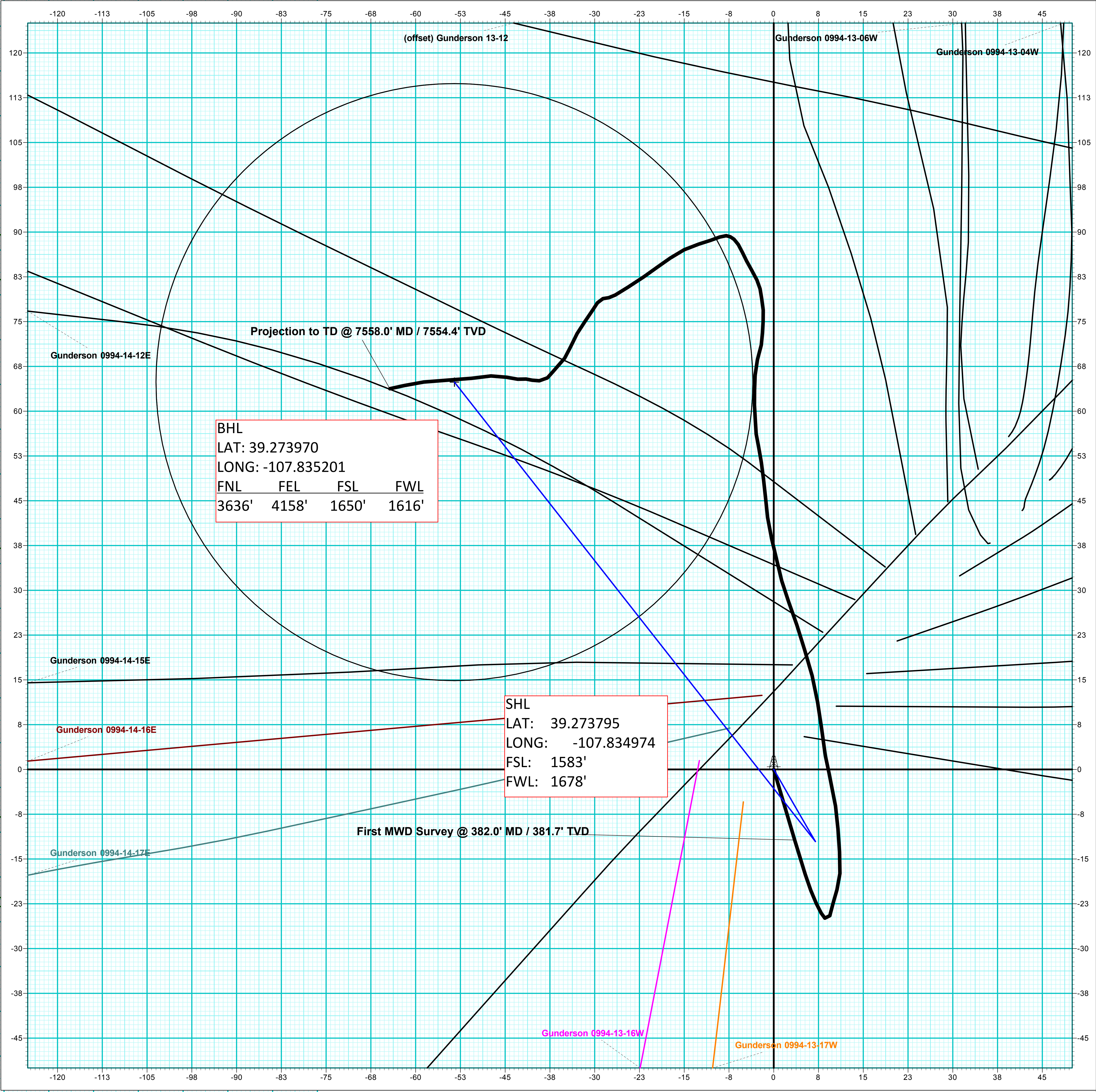
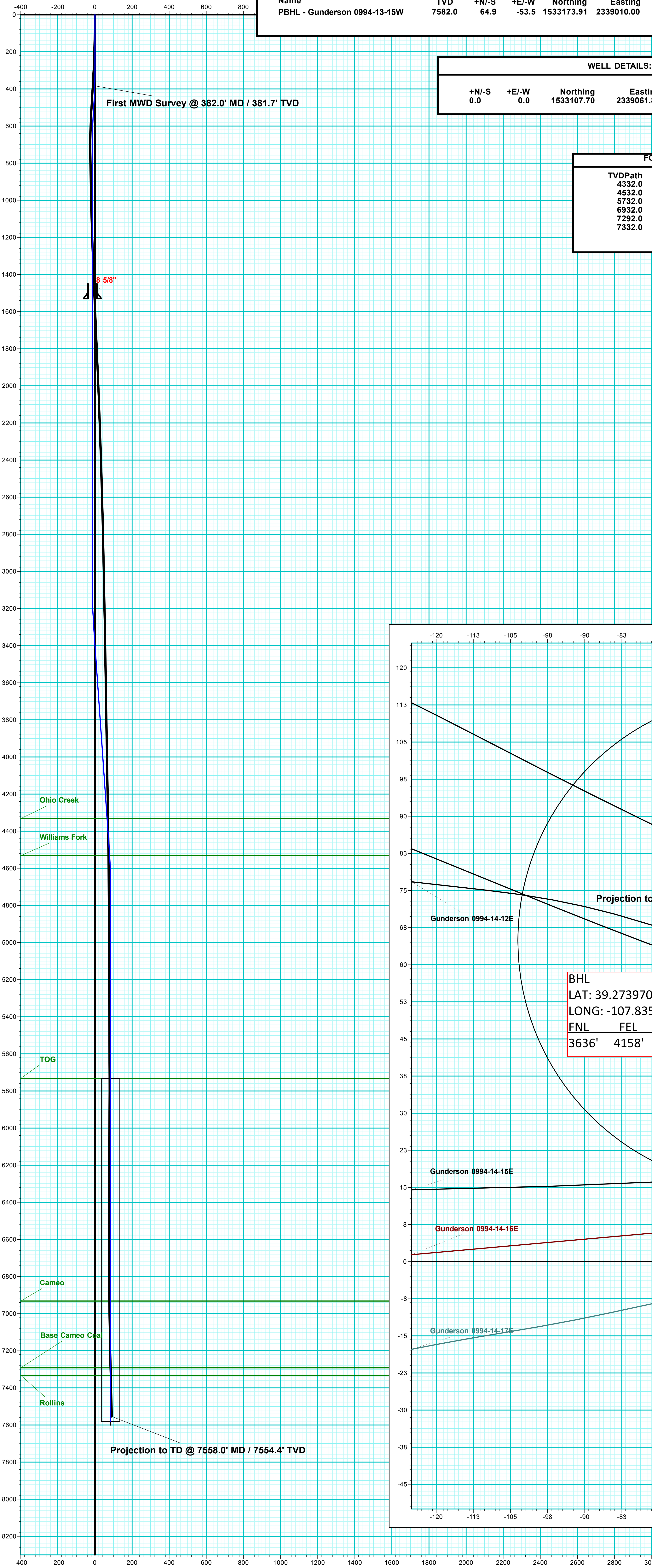
WELL DETAILS: Gunderson 0994-13-15W						
+N/-S	+E/-W	Northing	Easting	Latitude	Longitude	
0.0	0.0	1533107.70	2339061.82	39.273795	-107.834974	

FORMATION TOP DETAILS		
TVDPATH	MDPATH	FORMATION
4332.0	4335.0	Ohio Creek
4532.0	4535.5	Williams Fork
5732.0	5735.6	TOG
6932.0	6935.6	Cameo
7292.0	7295.6	Base Cameo Coal
7332.0	7335.6	Rollins



DESIGN ANNOTATIONS									
MD	Inc	Azi	TVD	+N/-S	+E/-W	VSec	Departure	Annotation	
300.0	0.00	0.00	300.0	0.0	0.0	0.0	0.0	KOP (Build 2° / 100')	
500.0	4.00	150.00	499.8	-6.0	3.5	-6.9	7.0	EOB @ 4.00° Inc. / 150.00° Azm / Drop 2° / 100'	
700.0	0.00	0.00	699.7	-12.1	7.0	-13.8	14.0	EOD @ Vertical	
3100.0	0.00	0.00	3099.7	-12.1	7.0	-13.8	14.0	Build 2° / 100'	
3299.9	4.00	321.83	3299.4	-6.6	2.7	-6.8	20.9	EOB @ 4.00° Inc. / 321.82° Azm	
4503.7	4.00	321.83	4500.3	59.4	-49.2	77.1	104.9	Drop 2° / 100'	
4703.6	0.00	0.00	4700.0	64.9	-53.5	84.1	111.8	EOD @ Vertical	
7585.6	0.00	0.00	7582.0	64.9	-53.5	84.1	111.8	TD @ 7585.6' MD / 7582.0' TVD	

ANNOTATIONS									
MD	Inc	Azi	TVD	+N/-S	+E/-W	VSec	Departure	Annotation	
382.0	3.70	163.50	381.7	-11.8	3.5	12.3	12.3	First MWD Survey @ 382.0' MD / 381.7' TVD	
7558.0	2.40	257.50	7554.4	63.8	-64.3	-82.6	213.2	Projection to TD @ 7558.0' MD / 7554.4' TVD	



BHL  
LAT: 39.273970  
LONG: -107.835201  
FNL FEL FSL FWL  
3636' 4158' 1650' 1616'

SHL  
LAT: 39.273795  
LONG: -107.834974  
FSL: 1583'  
FWL: 1678'

Vertical Section at 320.48° (200 usft/in)