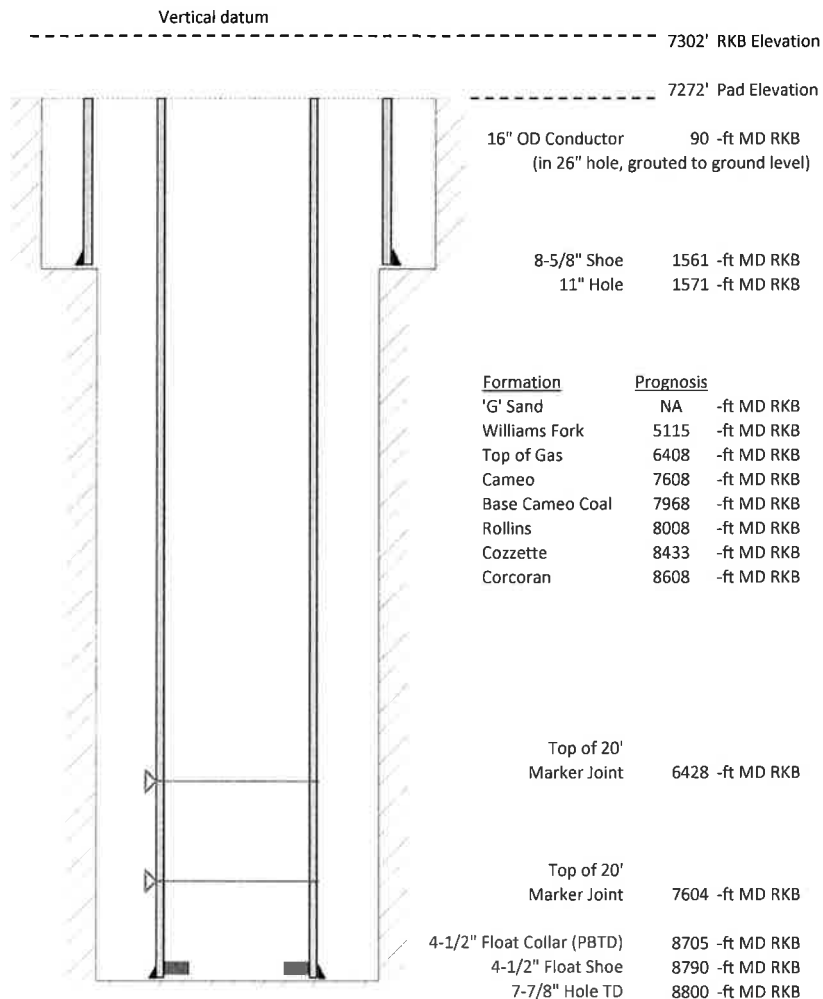


Laramie Energy, LLC
Gunderson 0994-14-16E
Slot A-3
H&P 522 (30-ft KB)

API #: 05-077-10528-00
 NE/4 SW/4 S13/T9S/R94W/6th PM
 Mesa County, CO
 Date of diagram: 4/28/2018



Cementing details

8-5/8" 24# Surface Csg	Lead	Tail
Density (ppg)	12.3	12.8
Volume (sx)	158	95
Yield (cf/sx)	2.45	2.18
Top (ft RKB)	0	640
Bottom (ft RKB)	640	1561
Returns (full or partial)	Full	Full

4-1/2" 11.6# Prod Csg	Lead	Tail
Density (ppg)	12.5	13.3
Volume (sx)	861	499
Yield (cf/sx)	1.94	1.73
Est Top (ft RKB)	0	4650
Est Bottom (ft RKB)	4650	8790
Returns (full or partial)	Full	Full

Displacement
8.3 ppg
135 bbls

Other Remarks: 22 bbls of cement back on surface. 35 bbls cement back on production.