

Gunderson 0994-14-16E  
Mesa County, CO  
Q180501 & RM-180430  
Design #1

Company Name: Laramie Energy, LLC  
Gunderson 0994-14-16E  
Mesa County, CO  
Rig: H&P #522  
Created By: Will Jircik  
Date: 4/29/2018

|                  |                           |
|------------------|---------------------------|
| PROJECT DETAILS: | Mesa County, CO           |
| Geodetic System: | US State Plane 1983       |
| Datum:           | North American Datum 1983 |
| Ellipsoid:       | GRS 1980                  |
| Zone:            | Colorado Central Zone     |
| System Datum:    | Mean Sea Level            |

T

M

Azimuths to True North

Magnetic North: 9.44°

Strength: 51307.6snT

Dip Angle: 65.41°

Date: 4/20/2018

Model: USER DEFINED

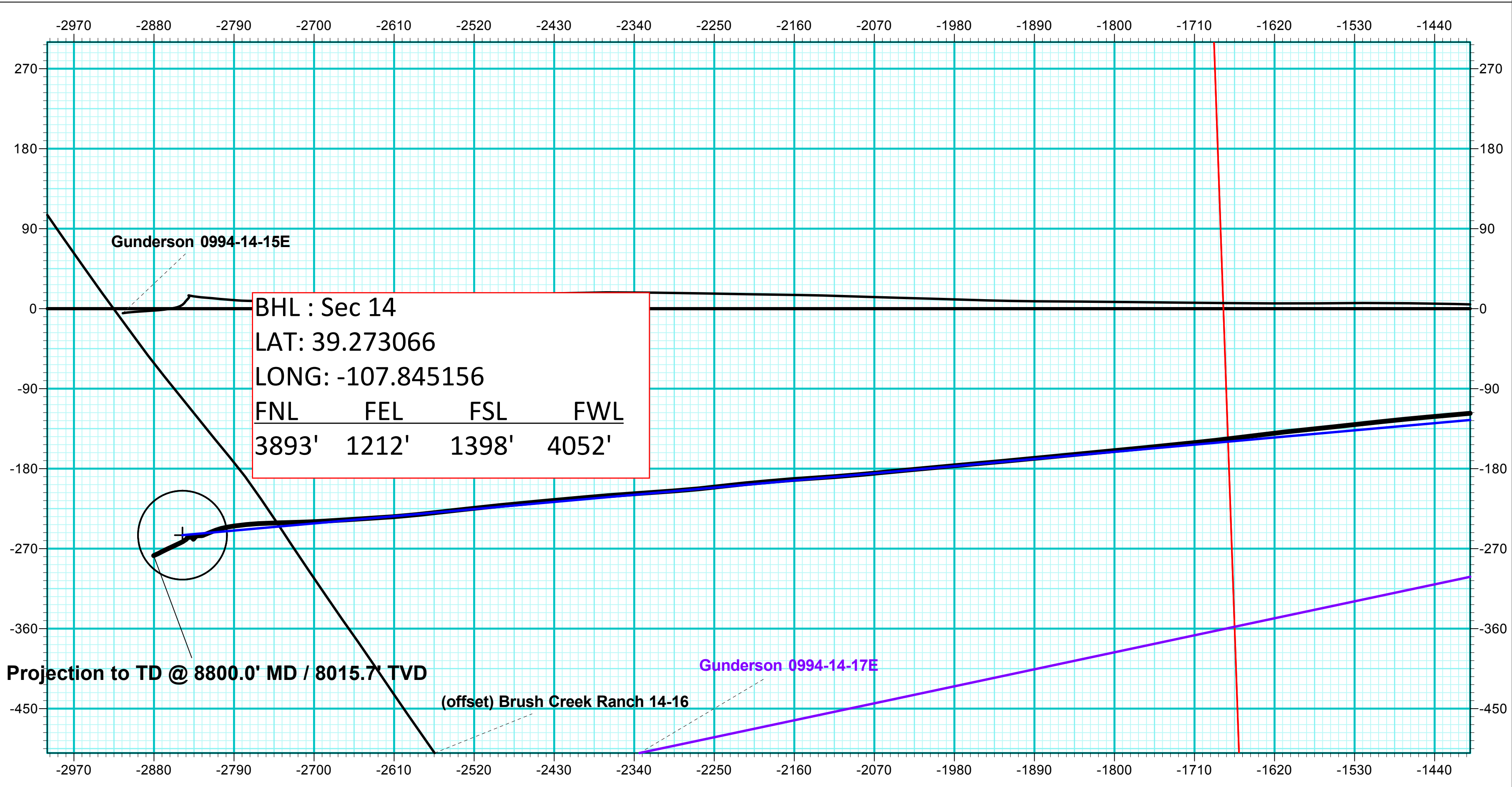
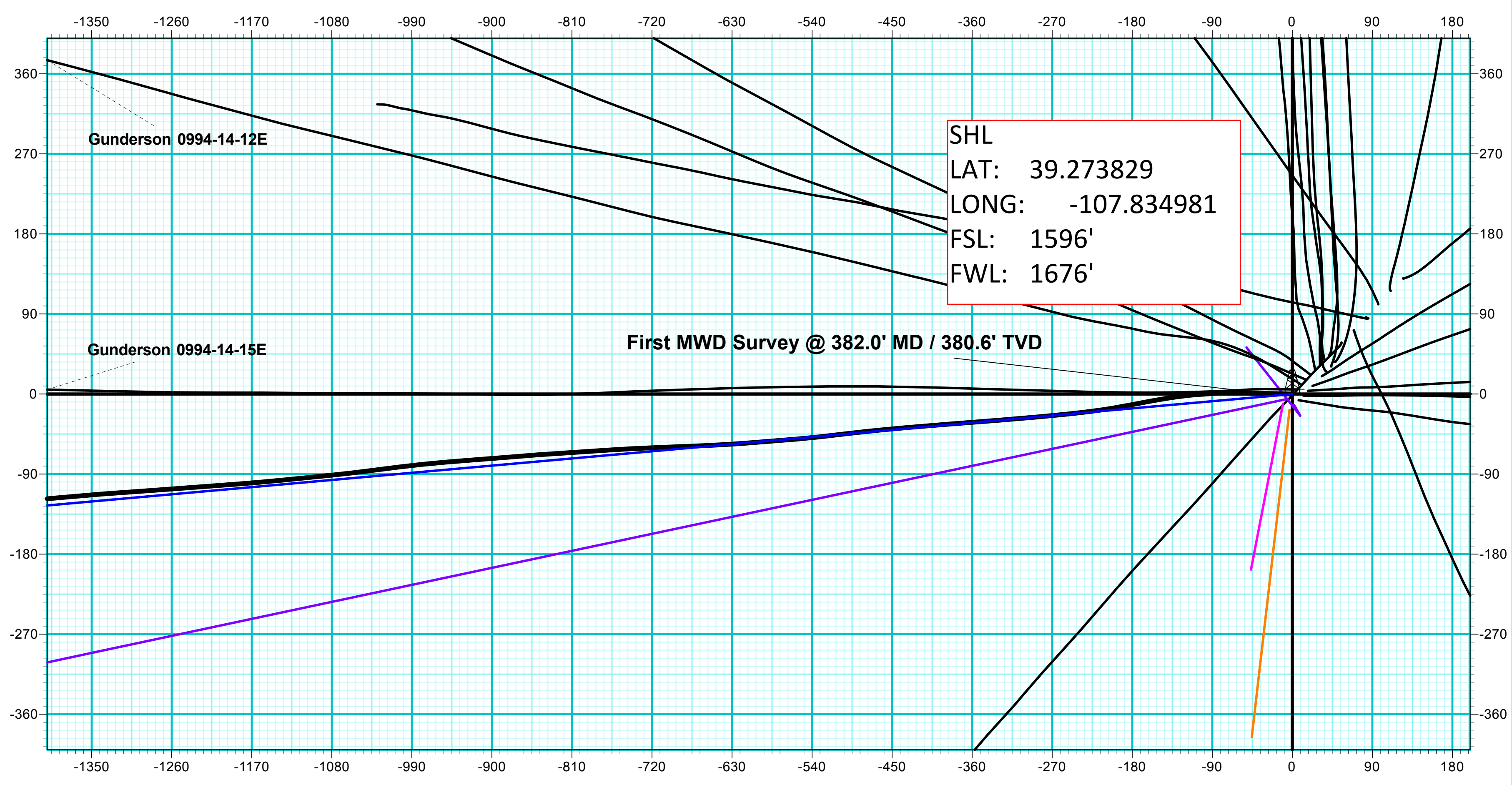
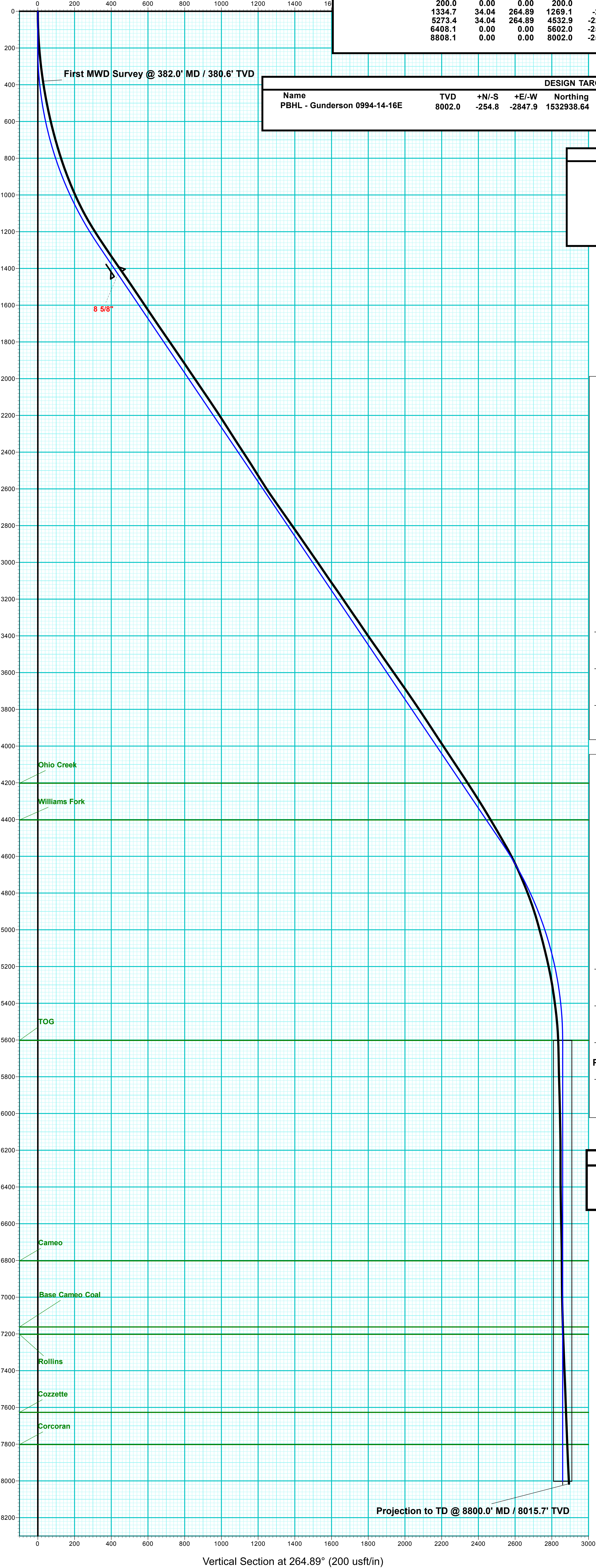
| DESIGN #1 ANNOTATIONS |       |        |        |        |         |        |           |                                 |  |
|-----------------------|-------|--------|--------|--------|---------|--------|-----------|---------------------------------|--|
| MD                    | Inc   | Azi    | TVD    | +N/-S  | +E/-W   | VSec   | Departure | Annotation                      |  |
| 200.0                 | 0.00  | 0.00   | 200.0  | 0.0    | 0.0     | 0.0    | 0.0       | KOP (Build 3° / 100')           |  |
| 1334.7                | 34.04 | 264.89 | 1269.1 | -29.2  | -326.0  | 327.3  | 327.3     | EOB @ 34.04° Inc. / 264.89° Azm |  |
| 5273.4                | 34.04 | 264.89 | 4532.9 | -225.6 | -2522.0 | 2532.0 | 2532.0    | Drop 3° / 100'                  |  |
| 6408.1                | 0.00  | 0.00   | 5602.0 | -254.8 | -2847.9 | 2859.3 | 2859.3    | EOD @ Vertical                  |  |
| 8808.1                | 0.00  | 0.00   | 8002.0 | -254.8 | -2847.9 | 2859.3 | 2859.3    | TD @ 8808.1' MD / 8002.0' TVD   |  |

| DESIGN TARGET DETAILS        |        |        |         |                             |            |           |             |
|------------------------------|--------|--------|---------|-----------------------------|------------|-----------|-------------|
| Name                         | TVD    | +N/-S  | +E/-W   | Northing                    | Easting    | Latitude  | Longitude   |
| PBHL - Gunderson 0994-14-16E | 8002.0 | -254.8 | -2847.9 | 1532938.64                  | 2336206.63 | 39.273129 | -107.845041 |
|                              |        |        |         | Shape Circle (Radius: 50.0) |            |           |             |

| FORMATION TOP DETAILS |        |                 |
|-----------------------|--------|-----------------|
| TVDPATH               | MDPATH | FORMATION       |
| 4202.0                | 4874.1 | Ohio Creek      |
| 4402.0                | 5115.4 | Williams Fork   |
| 5602.0                | 6408.1 | TOG             |
| 6802.0                | 7608.1 | Cameo           |
| 7162.0                | 7968.1 | Base Cameo Coal |
| 7202.0                | 8008.1 | Rollins         |
| 7627.0                | 8433.1 | Cozzette        |
| 7802.0                | 8608.1 | Corcoran        |



| WELL DETAILS: Gunderson 0994-14-16E |       |            |            |           |             |        |
|-------------------------------------|-------|------------|------------|-----------|-------------|--------|
| +N/-S                               | +E/-W | Northing   | Easting    | Latitude  | Longitude   |        |
| 0.0                                 | 0.0   | 1533120.15 | 2339060.16 | 39.273829 | -107.834981 | 7272.0 |



| ANNOTATIONS |      |        |        |        |         |        |           |   |  |
|-------------|------|--------|--------|--------|---------|--------|-----------|---|--|
| MD          | Inc  | Azi    | TVD    | +N/-S  | +E/-W   | VSec   | Departure | Annotation                                  |  |
| 382.0       | 8.50 | 271.20 | 380.6  | 0.6    | -28.3   | 28.1   | 28.3      | First MWD Survey @ 382.0' MD / 380.6' TVD   |  |
| 8800.0      | 2.80 | 246.50 | 8015.7 | -277.8 | -2880.4 | 2893.7 | 2903.6    | Projection to TD @ 8800.0' MD / 8015.7' TVD |  |

