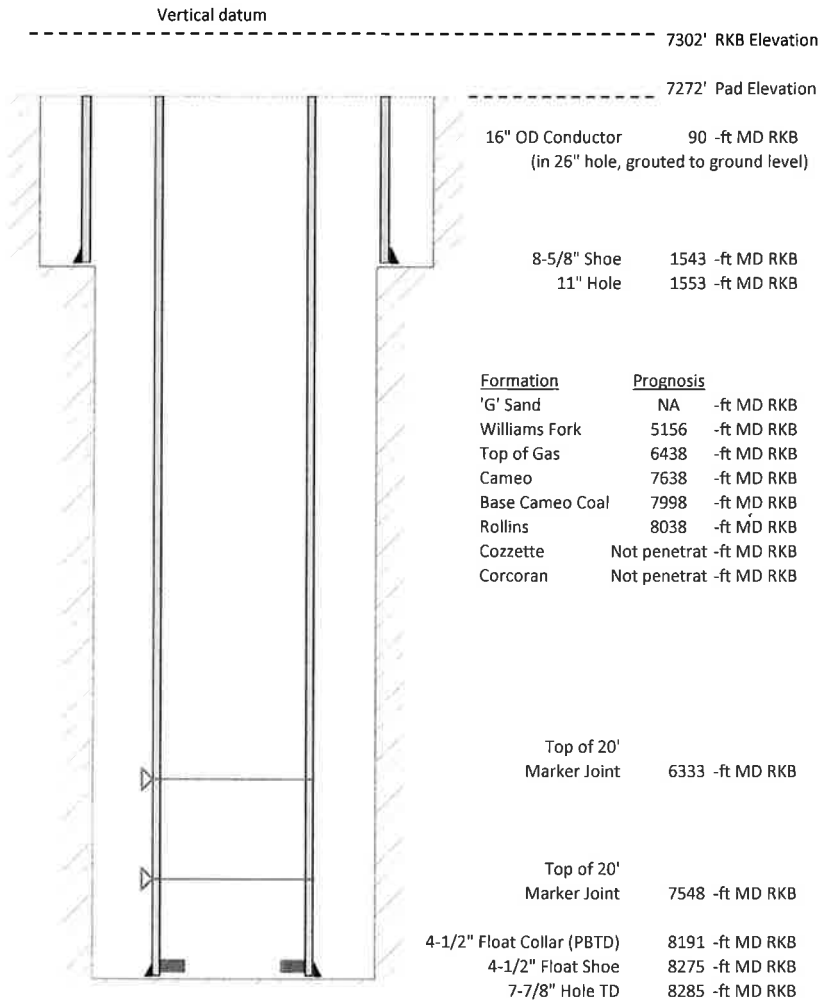


Laramie Energy, LLC
Gunderson 0994-13-17E
Slot B-3
H&P 522 (30-ft KB)

API # : 05-077-10529-00
 NE/4 SW/4 S13/T9S/R94W/6th PM
 Mesa County, CO
 Date of diagram : 4/23/2018



Cementing details

8-5/8" 24# Surface Csg	Lead	Tail
Density (ppg)	12.3	12.8
Volume (sx)	167	109
Yield (cf/sx)	2.45	2.18
Top (ft RKB)	0	550
Bottom (ft RKB)	550	1543
Returns (full or partial)	Full	Full

4-1/2" 11.6# Prod Csg	Lead	Tail
Density (ppg)	12.5	13.3
Volume (sx)	864	395
Yield (cf/sx)	1.94	1.73
Est Top (ft RKB)	0	5250
Est Bottom (ft RKB)	5250	8275
Returns (full or partial)	Full	Full

Displacement
8.3 ppg
127 bbls

Other Remarks: 33 bbls cement back on surface job. 40 bbls spacer back on production job.