

Final Reclamation Inspection

July 3, 2018

Operator: KERR MCGEE OIL & GAS ONSHORE LP #47120

API: 05-123-14957

Inspection Document #: 682403745

Weld County, CO

NESW Section 8 T2N R65W

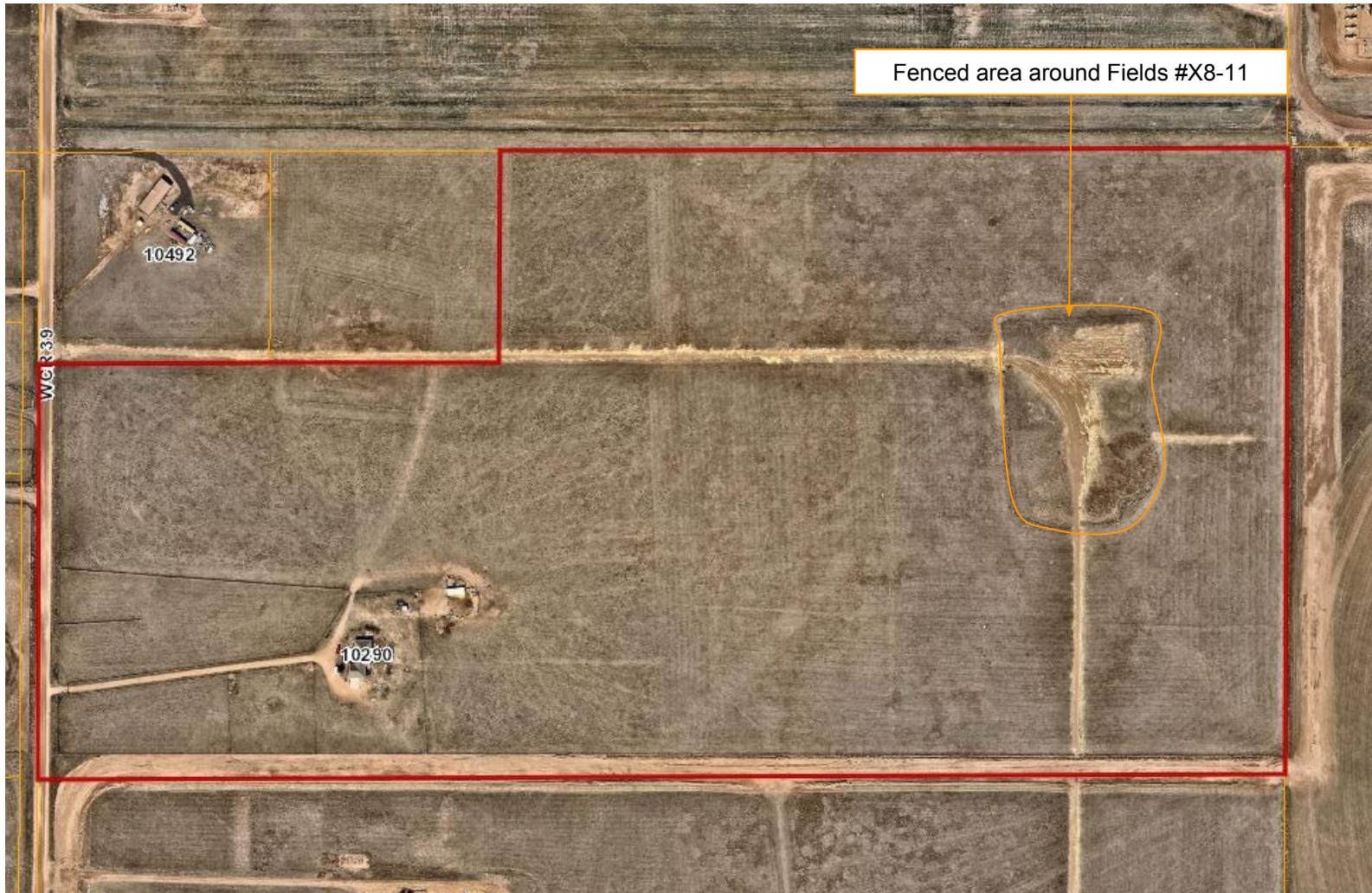
Chris Binschus
Reclamation Specialist, COGCC



COLORADO
Oil & Gas Conservation
Commission

Department of Natural Resources

Inspection Photos
Location Name: FIELDS #X8-11
API: 05-123-14957



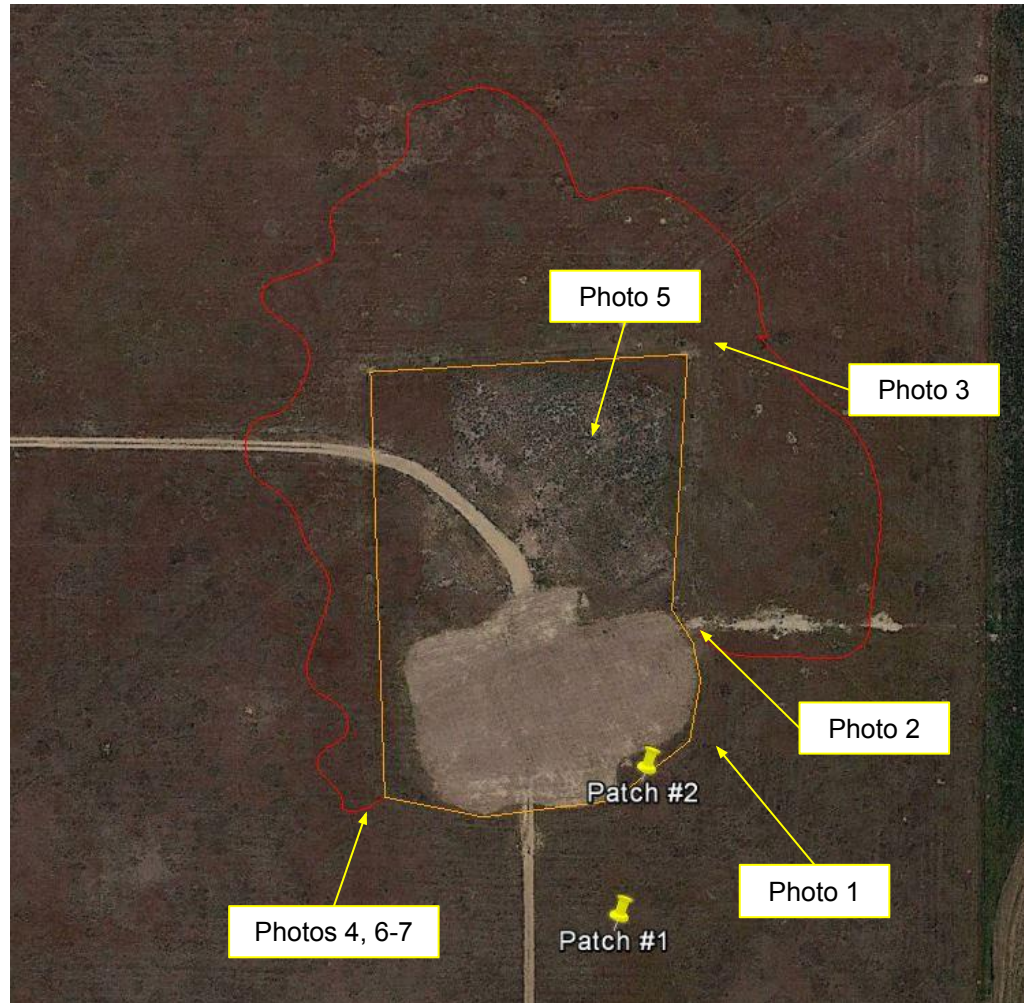
Weld County aerial imagery taken 2018, illustrating the approximate fenced, plugged and abandoned area (orange line) and the surface owner property line (red line). Scotch thistle (*Onopordum acanthium*), a Colorado List B noxious weed, has spread off location- see the following image of the approximate extent off location.

Inspection Photos
Location Name: FIELDS #X8-11
API: 05-123-14957



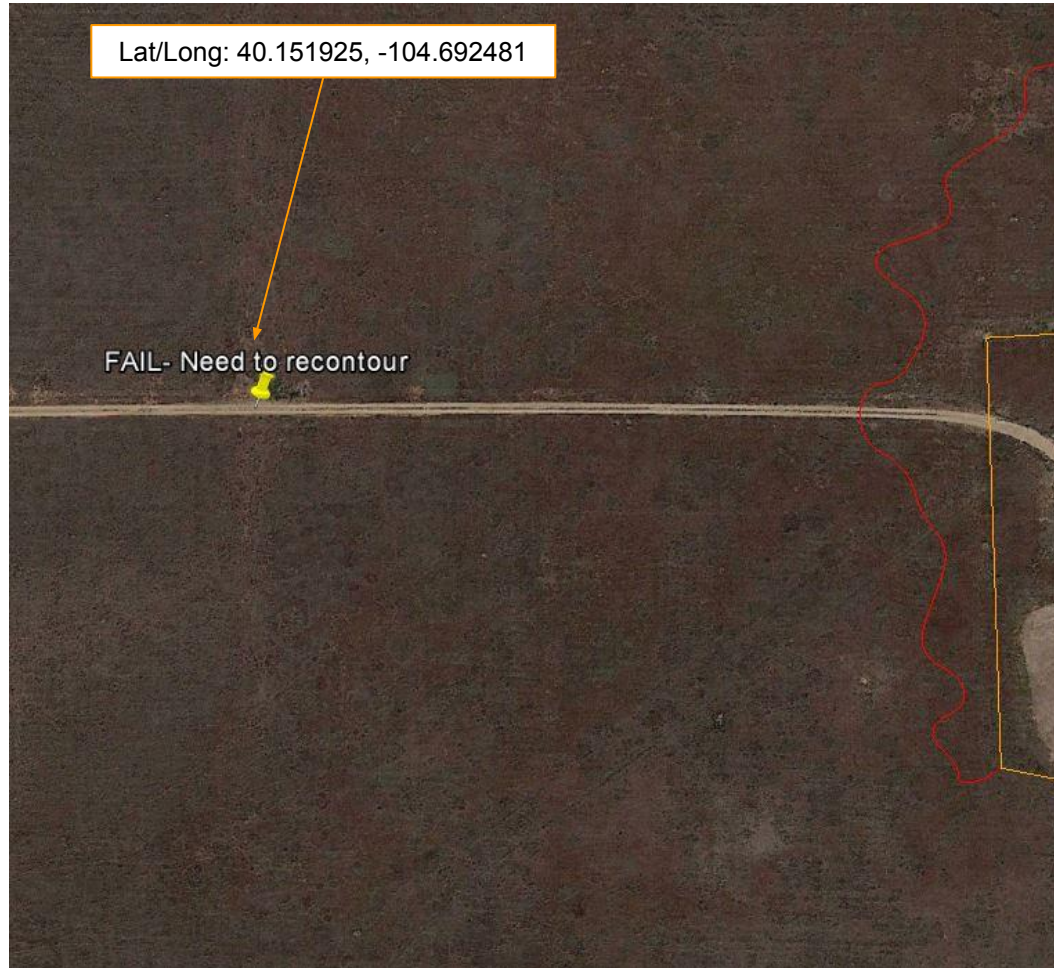
Google Earth aerial imagery taken 6/9/2017, illustrating the approximate fenced area (orange line) and the approximate extent of Scotch thistle (red line). Scotch thistle has spread off location (~200' east; ~250' north; ~125' west; and patches observed south of the location). Complainant indicated that Scotch thistle was not maintained during active operations and spread off location. Scotch thistle was not observed throughout any other portion of the surface owners property.

Inspection Photos
Location Name: FIELDS #X8-11
API: 05-123-14957



Google Earth aerial imagery taken on 6/9/2017, illustrating photo reference points to help illustrate approximate locations of the subject photo during the July 3, 2018 inspection.

Inspection Photos
Location Name: FIELDS #X8-11
API: 05-123-14957



Google Earth aerial imagery taken 6/9/2017, illustrating a marked area of the access road that has not been properly contoured to match the surrounding landscape.

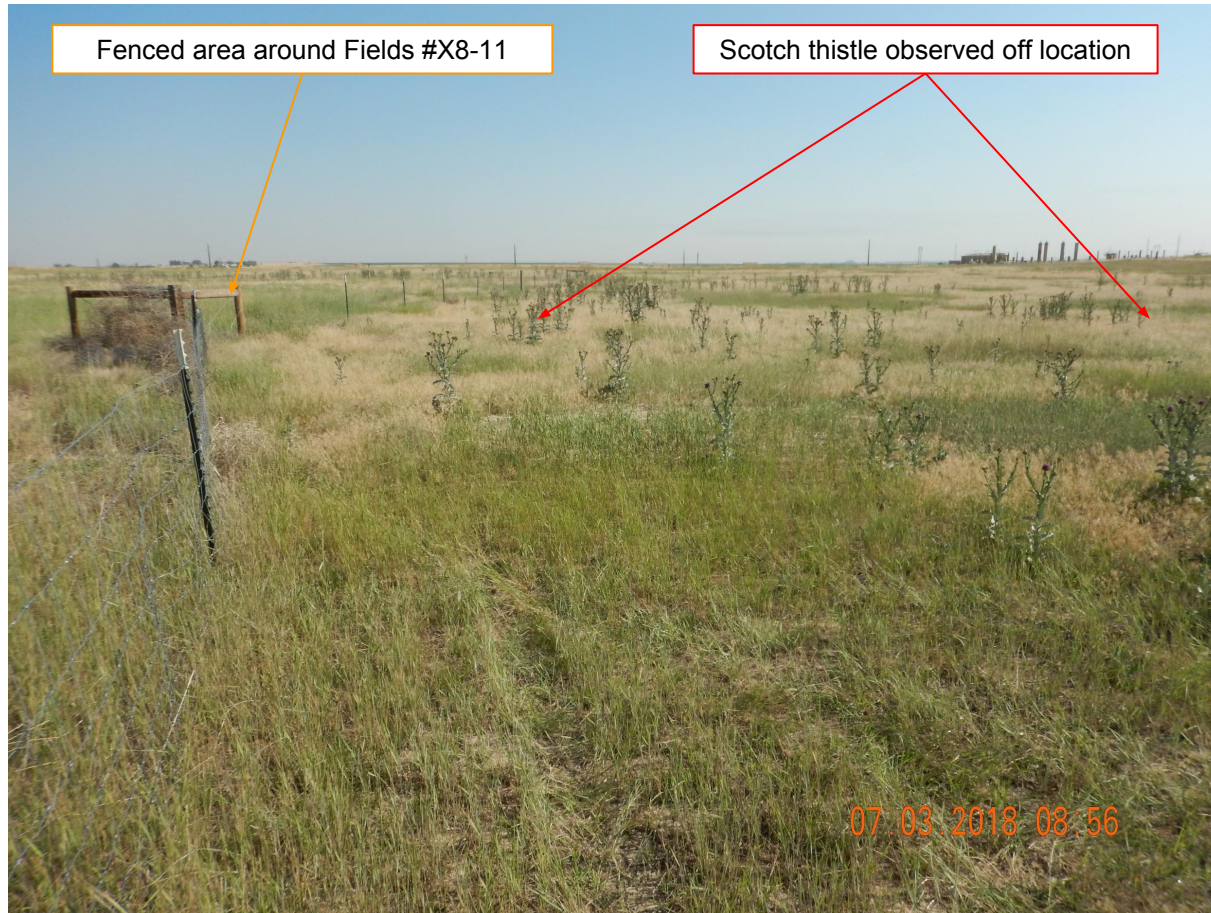


Photo 1. Photo taken from the southeastern fenced area, facing North. Photo illustrates Scotch thistle that has spread off location. Operator shall control and manage Scotch thistle that has spread off location. Operator shall coordinate with the surface owner using the Best Management Practices to control and manage Scotch thistle.

Scotch thistle observed off location



Photo 2. Photo taken just beyond the eastern fenced area, facing East off location.
See comments under Photo 1.

Inspection Photos
Location Name: FIELDS #X8-11
API: 05-123-14957

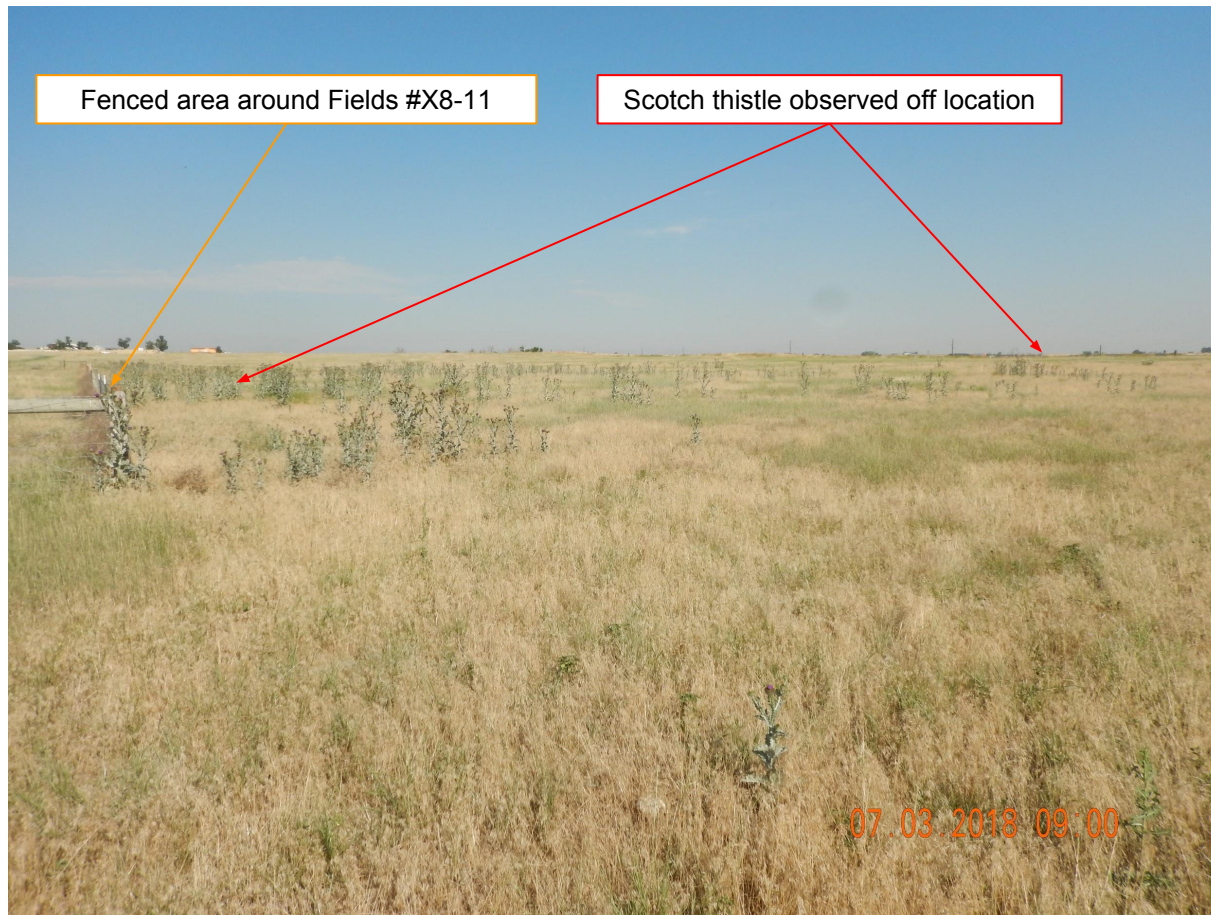


Photo 3. Photo taken just beyond the northeastern fenced area, facing Northwest off location. See comments under Photo 1.

Inspection Photos
Location Name: FIELDS #X8-11
API: 05-123-14957

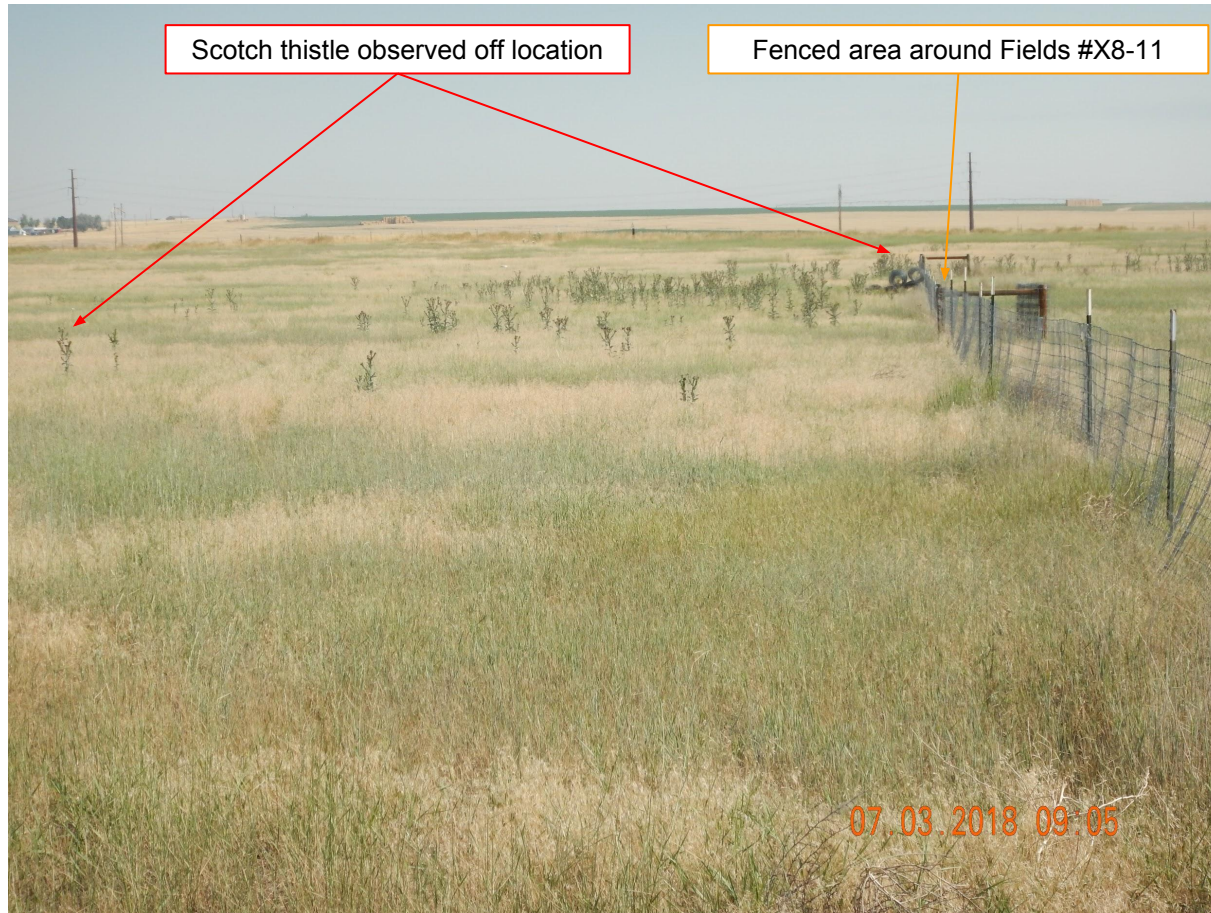


Photo 4. Photo taken just beyond the southwestern fenced area, facing North off location. See comments under Photo 1.



Photo 5. Photo taken from the northeastern location. Photo illustrates viable Scotch thistle rosettes. Operator claims that recent weed management was performed but several viable Scotch thistle rosettes were observed within the location. Operator shall coordinate with the surface owner using the Best Management Practices to control and manage Scotch thistle.

Inspection Photos
Location Name: FIELDS #X8-11
API: 05-123-14957



Photo 6. Photo taken from the southwestern location, facing Northwest. Photo illustrates Russian thistle weed debris. Per Rule 603.f., Operator shall control and manage Russian thistle weeds to prevent weed waste and to prevent the spread of dispersing seeds onto adjacent lands.



Photo 7. Photo taken from the southwestern location, facing East. See comments under Photo 6.