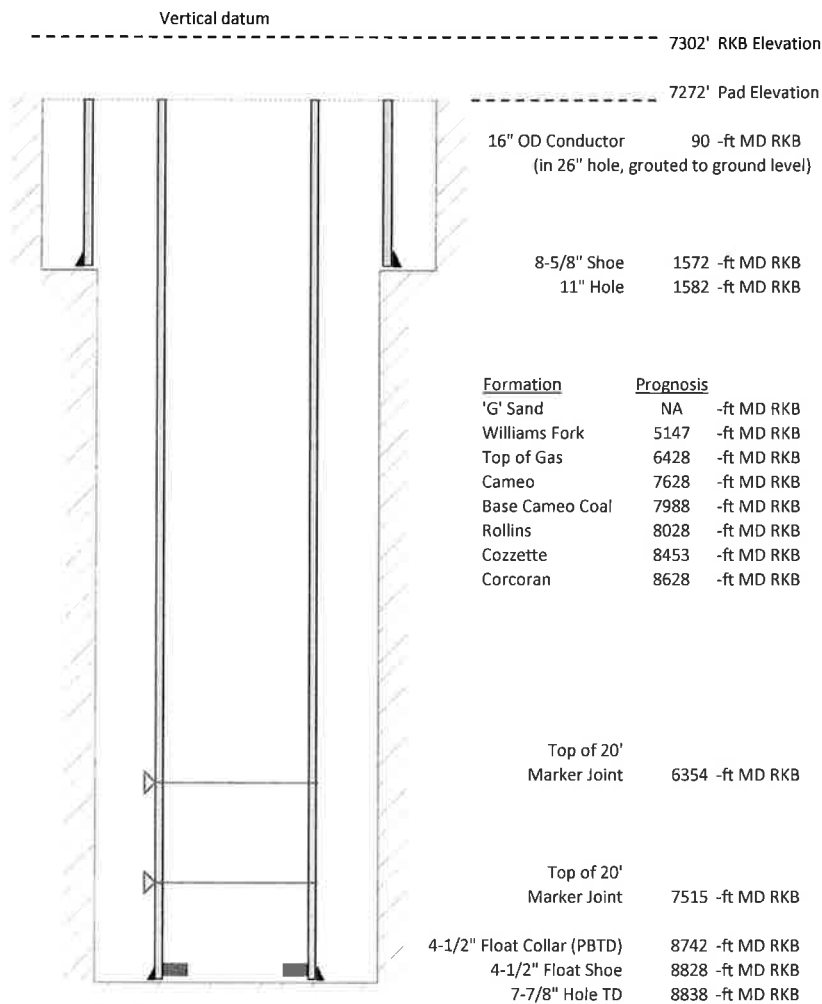


**Laramie Energy, LLC**  
**Gunderson 0994-13-16E**  
**Slot B-4**  
**H&P 522 (30-ft KB)**

API # : 05-077-10532-00  
 NE/4 SW/4 S13/T9S/R94W/6th PM  
 Mesa County, CO  
 Date of diagram : 4/19/2018



**Cementing details**

8-5/8" 24# Surface Csg	Lead	Tail
Density (ppg)	12.3	12.8
Volume (sx)	167	109
Yield (cf/sx)	2.45	2.18
Top (ft RKB)	0	1030
Bottom (ft RKB)	1030	1572
Returns (full or partial)	Full	Full

4-1/2" 11.6# Prod Csg	Lead	Tail
Density (ppg)	12.5	13.3
Volume (sx)	864	499
Yield (cf/sx)	1.94	1.73
Est Top (ft RKB)	1030	6228
Est Bottom (ft RKB)	6228	8828
Returns (full or partial)	Full	Full

Displacement
8.3 ppg
135.5 bbls

Other Remarks : 34 bbls cement to surface on surface job. 40 bbls spacer to surface on production job.