

Gunderson 0994-13-16E
Mesa County, CO
Q180433 & RM-180371
Design #1

Company Name: Laramie Energy, LLC
Gunderson 0994-13-16E
Mesa County, CO
Rig: H&P #522
Created By: Will Jircik
Date: 4/18/2018

PROJECT DETAILS: Mesa County, CO
Geodetic System: US State Plane 1983
Datum: North American Datum 1983
Ellipsoid: GRS 1980
Zone: Colorado Central Zone
System Datum: Mean Sea Level

T

M

Azimuths to True North

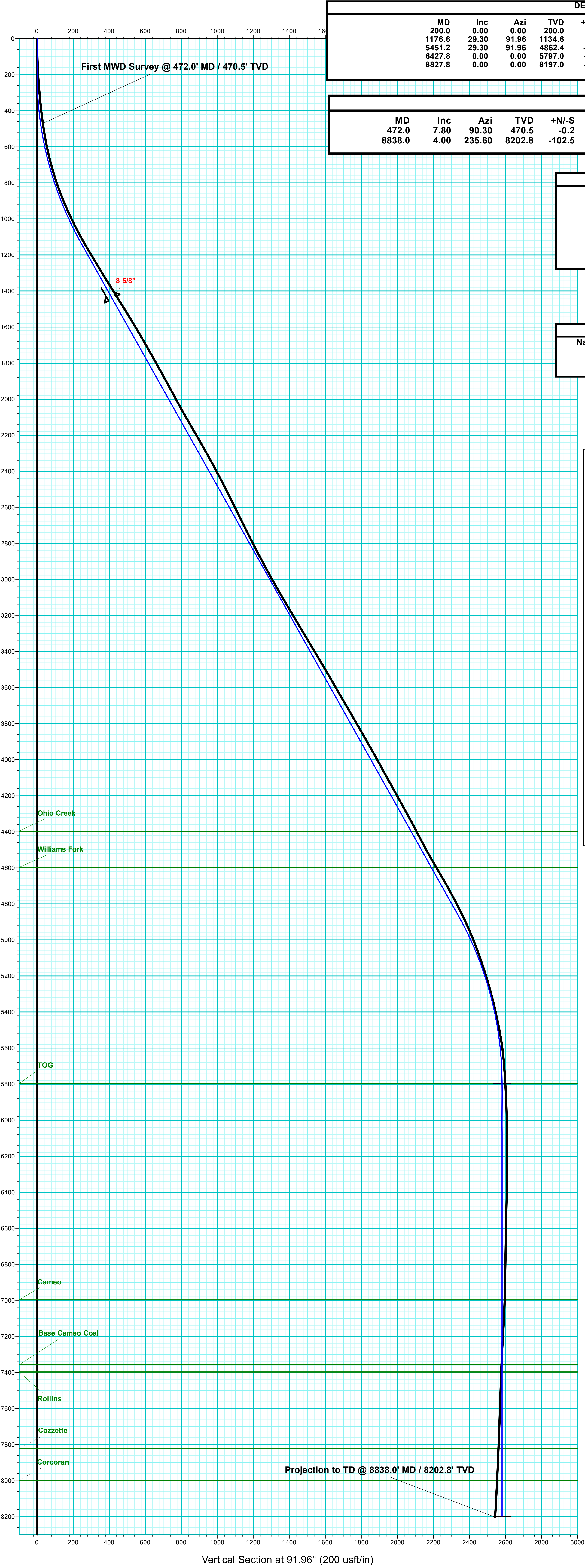
Magnetic North: 9.45°

Strength: 51312.4snT

Dip Angle: 65.41°

Date: 4/5/2018

Model: USER DEFINED



DESIGN ANNOTATIONS									
MD	Inc	Azi	TVD	+N/-S	+E/-W	VSec	Departure	Annotation	
200.0	0.00	0.00	200.0	0.0	0.0	0.0	0.0	KOP (Build 3° / 100')	
1176.6	29.30	91.96	1134.6	-8.4	244.2	244.3	244.3	EOB @ 29.30° Inc. / 91.96° Azm	
5451.2	29.30	91.96	4862.4	-80.0	2334.8	2336.2	2336.2	Drop 3° / 100'	
6427.8	0.00	0.00	5797.0	-88.4	2579.0	2580.5	2580.5	EOD @ Vertical	
8827.8	0.00	0.00	8197.0	-88.4	2579.0	2580.5	2580.5	TD @ 8827.8' MD / 8197.0' TVD	

ANNOTATIONS									
MD	Inc	Azi	TVD	+N/-S	+E/-W	VSec	Departure	Annotation	
472.0	7.80	90.30	470.5	-0.2	32.1	32.1	32.1	First MWD Survey @ 472.0' MD / 470.5' TVD	
8838.0	4.00	235.60	8202.8	-102.5	2540.0	2542.1	2696.7	Projection to TD @ 8838.0' MD / 8202.8' TVD	

FORMATION TOP DETAILS		
TVDPATH	MDPATH	FORMATION
4397.0	4917.6	Ohio Creek
4597.0	5146.9	Williams Fork
5797.0	6427.8	TOG
6997.0	7627.8	Cameo
7357.0	7987.8	Base Cameo Coal
7397.0	8027.8	Rollins
7822.0	8452.8	Cozzette
7937.0	8627.8	Corcoran



DESIGN TARGET DETAILS								
Name	TVD	+N/-S	+E/-W	Northing	Easting	Latitude	Longitude	Shape
PBHL - Gunderson 0994-13-16E	8202.8	-88.4	2579.0	1532963.39	2341648.41	39.273581	-107.825827	Circle (Radius: 50.0)

WELL DETAILS: Gunderson 0994-13-16E						
+N/-S	+E/-W	Northing	Easting	Latitude	Longitude	
0.0	0.0	1533118.01	2339072.57	39.273824	-107.834937	7272.0

