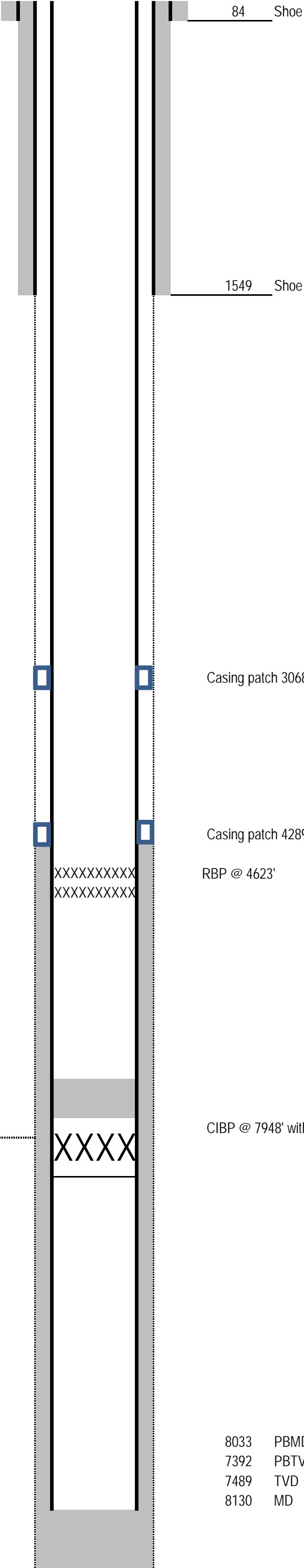


Current Well Bore Diagram

Not to Scale

Geological Tops	Depth
Ohio Creek	4782
<hr/>	
Williams Fork	5322
Cameo	7196
Rollins	7873



Well Name	Nichols 0994-13-20E		
API	05-077-10403		
Surface Location	1777 FNL & 2775 FEL		
GPS Coordinates	Lat 39.264717	Long -107.830528	
Field	Brush Creek		
County, State	Mesa, Colorado		
Spud Date	2/3/2018		
Completion Date	NA		
Diagram Date	7/9/2018		
KB Elevation		7137	
KB		24	
GL Elevation		7161	

Hole	26"
Conductor	16" @ 84'
Cement	100 scks, cemented to surface

Surface Hole	11" @ 1549
Casing	8-5/8" 24# J55 STC @ 1549
Cement	Lead: 191 sx VariCem GJ5 @ 12 ppg = 85.5 bbls Tail: 107 sx Varicem GJ5 @ 12.5 ppg = 42.1 bbls

TOC	SURFACE
-----	---------

Production Hole	7.875" @ 8120
Casing	4-1/2" 11.6# P110 LTC @ 8120
Cement	Lead: 875 sx NeoCem GJ2 @ 12.7 ppg = 307.3 bbls Tail: 393 sx ThermaCem GJ2 @ 13.5 ppg = 129.4 bbls

TOC	2780
-----	------

Casing patch 3068.5' - 3089' for collar leak at 3079'

Casing patch 4289.5' - 4311' for collar leak at 4300'

RBP @ 4623'

CIBP @ 7948' with 2 sxs cement dump bailed on top

8033	PBMD
7392	PBTVD
7489	TVD
8130	MD