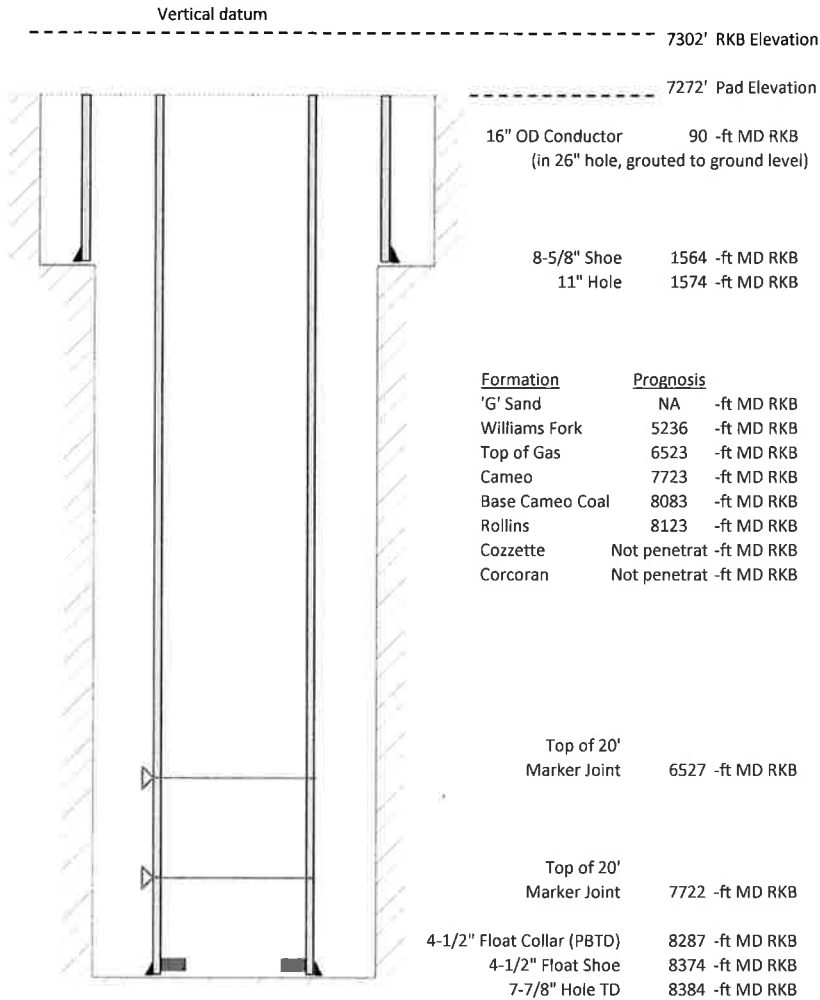


Laramie Energy, LLC
Gunderson 0994-13-12E
Slot B-6
H&P 522 (30-ft KB)

API # : 05-077-10535-00
 NE/4 SW/4 S13/T9S/R94W/6th PM
 Mesa County, CO
 Date of diagram : 4/3/2018



Cementing details

8-5/8" 24# Surface Csg	Lead	Tail
Density (ppg)	12.3	12.8
Volume (sx)	167	109
Yield (cf/sx)	2.45	2.18
Top (ft RKB)	0	900
Bottom (ft RKB)	900	1564
Returns (full or partial)	Full	Full

4-1/2" 11.6# Prod Csg	Lead	Tail
Density (ppg)	12.5	13.3
Volume (sx)	878	395
Yield (cf/sx)	1.94	1.73
Est Top (ft RKB)	0	5770
Est Bottom (ft RKB)	5770	8374
Returns (full or partial)	Full	Full

Displacement
8.3 ppg
128.5 bbls

Other Remarks : 30 bbls cement back on surface job. 40 bbls spacer back to surface.