

Gunderson 0994-13-12E
Mesa County, CO
Q171*** & RM-171***
Design #1

Company Name: Laramie Energy, LLC
Gunderson 0994-13-12E
Mesa County, CO
Rig: H&P #522
Created By: Will Jircik
Date: 3/22/2018

PROJECT DETAILS:	Mesa County, CO
Geodetic System:	US State Plane 1983
Datum:	North American Datum 1983
Ellipsoid:	GRS 1980
Zone:	Colorado Central Zone
System Datum:	Mean Sea Level

T

M

Azimuths to True North

Magnetic North: 9.45°

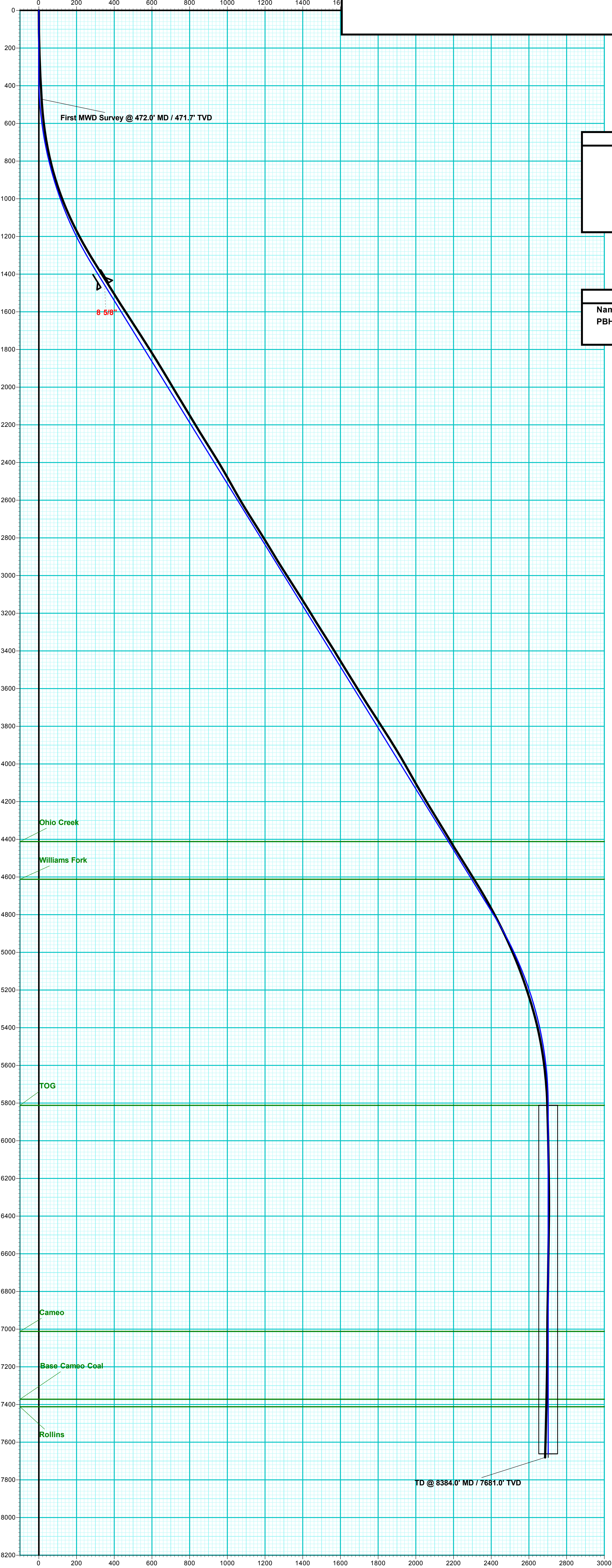
Strength: 51316.8snT

Dip Angle: 65.41°

Date: 3/22/2018

Model: USER DEFINED

ANNOTATIONS									
MD	Inc	Azi	TVD	+N/-S	+E/-W	VSect	Departure	Annotation	
472.0	3.60	70.90	471.7	4.9	14.0	14.8	14.8	First MWD Survey @ 472.0' MD / 471.7' TVD	
8384.0	1.60	264.30	7681.0	895.9	2532.3	2686.1	2733.1	TD @ 8384.0' MD / 7681.0' TVD	



FORMATION TOP DETAILS		
TVDPATH	MDPATH	FORMATION
4412.0	5000.7	Ohio Creek
4612.0	5235.8	Williams Fork
5812.0	6523.2	TOG
7012.0	7723.2	Cameo
7372.0	8083.2	Base Cameo Coal
7412.0	8123.2	Rollins



DESIGN TARGET DETAILS								
Name	TVD	+N/-S	+E/-W	Northing	Easting	Latitude	Longitude	Shape
PBHL - Gunderson 0994-13-12E	7662.0	899.8	2548.0	1533962.65	2341653.33	39.276324	-107.825900	Circle (Radius: 50.0)

WELL DETAILS: Gunderson 0994-13-12E						
+N/-S	+E/-W	Northing	Easting	Latitude	Longitude	
0.0	0.0	1533128.67	2339083.03	39.273854	-107.834901	

