

Gunderson 0994-13-10E
Mesa County, CO
Q180296 & RM-180260
Design #1

Company Name: Laramie Energy, LLC
Gunderson 0994-13-10E
Mesa County, CO
Rig: H&P #522
Created By: Will Jircik
Date: 3/18/2018

PROJECT DETAILS: Mesa County, CO
Geodetic System: US State Plane 1983
Datum: North American Datum 1983
Ellipsoid: GRS 1980
Zone: Colorado Central Zone
System Datum: Mean Sea Level

T

M

Azimuths to True North

Magnetic North: 9.45°

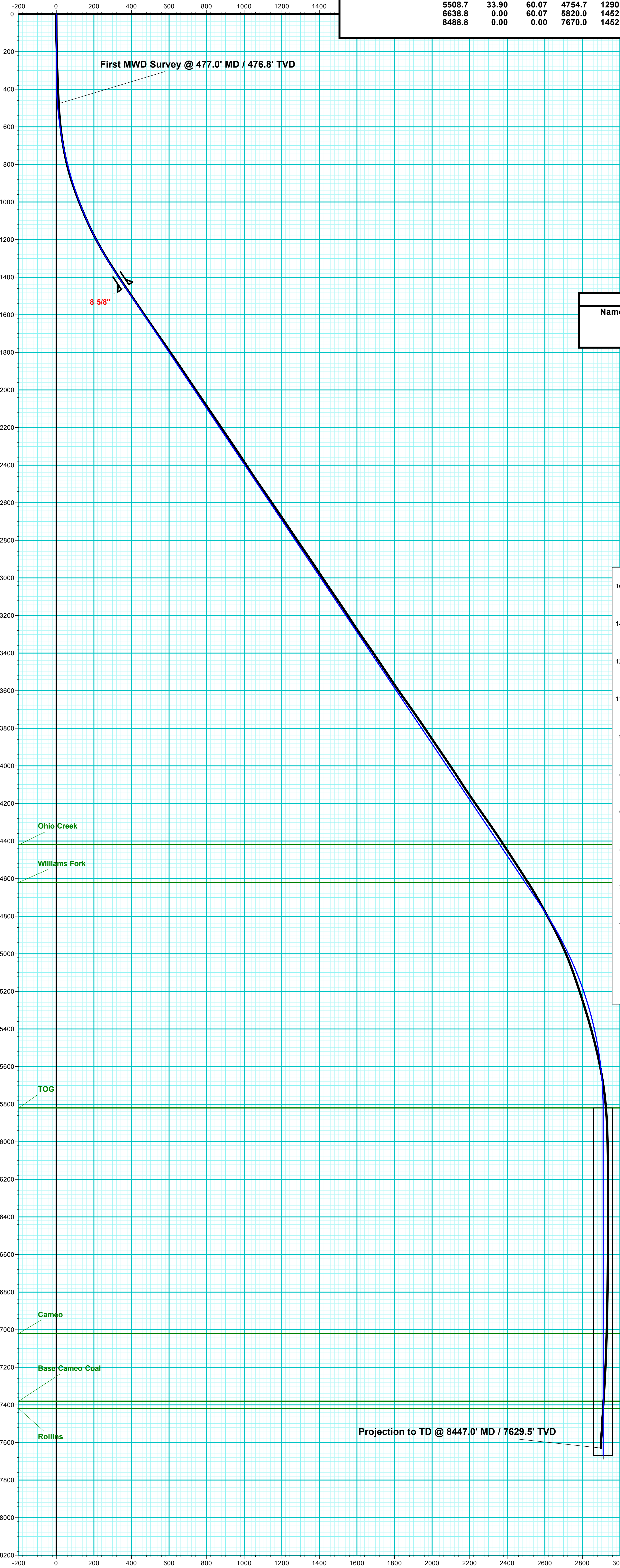
Strength: 51321.9snT

Dip Angle: 65.41°

Date: 3/6/2018

Model: USER DEFINED

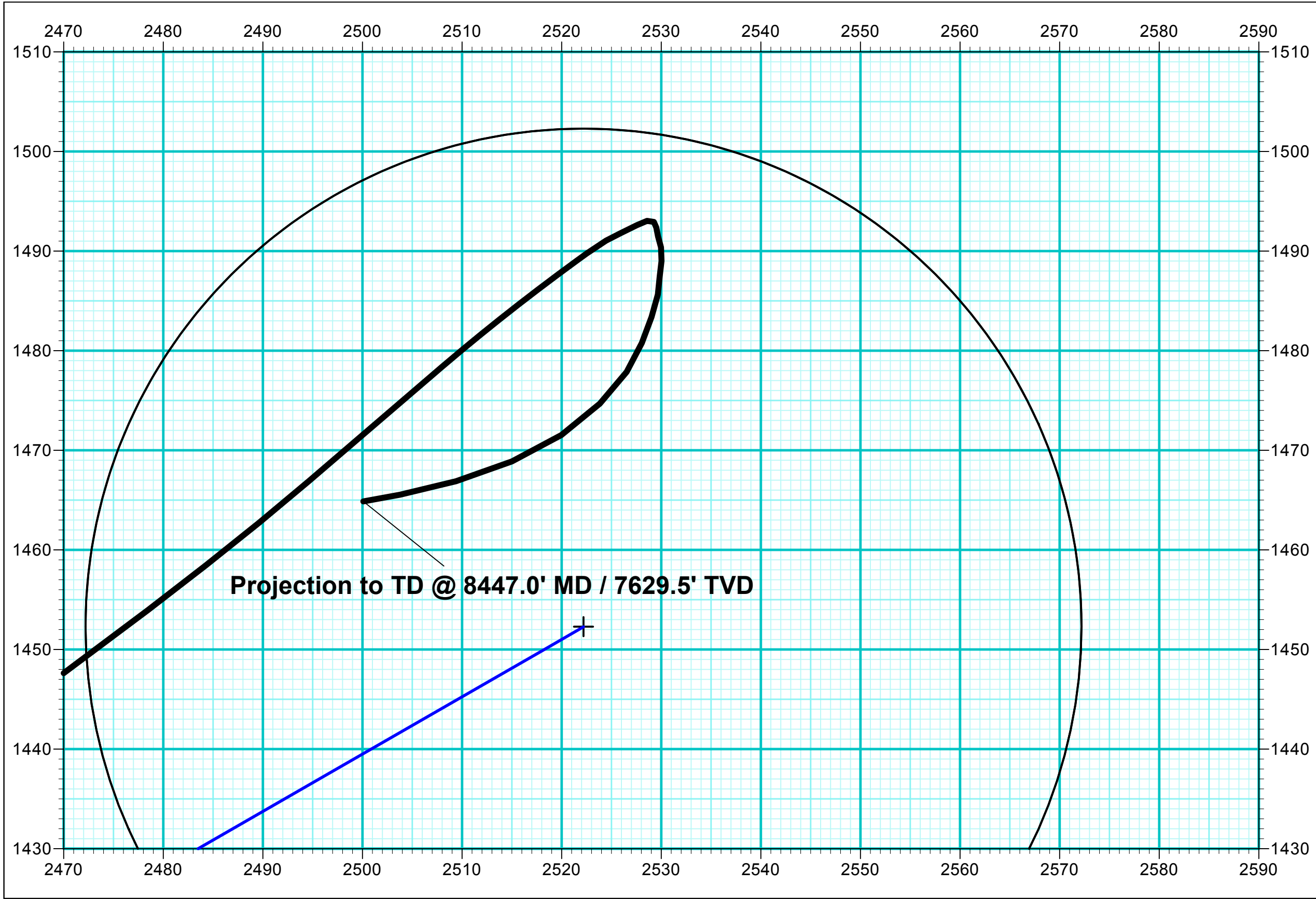
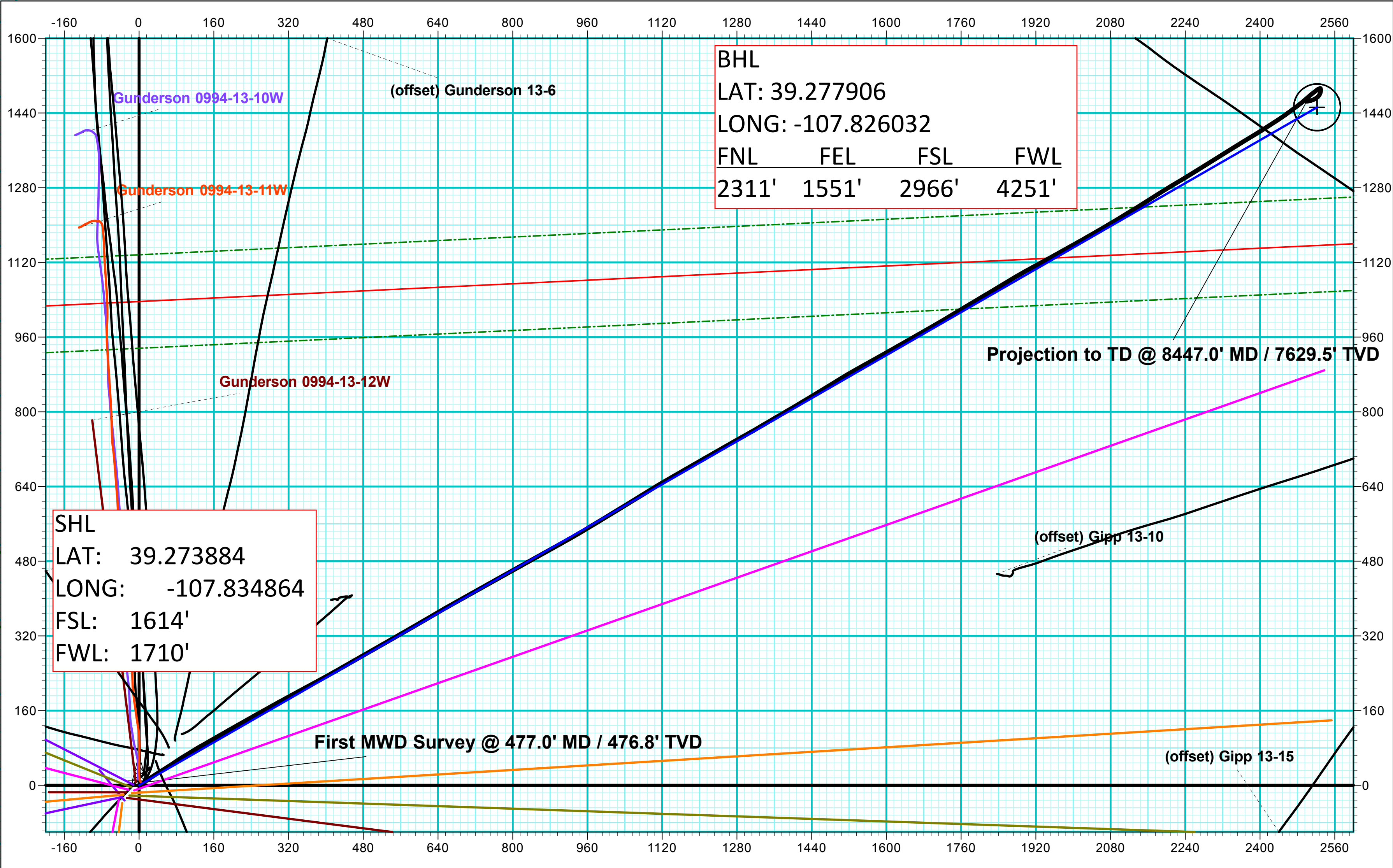
DESIGN #1 ANNOTATIONS									
MD	Inc	Azi	TVD	+N/-S	+E/-W	VSec	Departure	Annotation	
325.0	0.00	0.00	325.0	0.0	0.0	0.0	0.0	KOP (Build 3° / 100')	
1455.1	33.90	60.07	1390.3	162.0	281.4	324.7	324.7	EOB @ 33.90° Inc. / 60.07° Azm	
5508.7	33.90	60.07	4754.7	1290.3	2240.8	2585.7	2585.7	Drop 3° / 100'	
6638.8	0.00	60.07	5820.0	1452.3	2522.2	2910.4	2910.4	EOD @ Vertical	
8488.8	0.00	0.00	7670.0	1452.3	2522.2	2910.4	2910.4	TD @ 8488.8' MD / 7670.0' TVD	



DESIGN TARGET DETAILS								
Name	TVD	+N/-S	+E/-W	Northing	Easting	Latitude	Longitude	Shape
PBHL - Gunderson 0994-13-10E	7670.0	1452.3	2522.2	1534526.30	2341652.47	39.277871	-107.825954	Circle (Radius: 50.0)

WELL DETAILS: Gunderson 0994-13-10E					
+N/-S	+E/-W	Northing	Easting	Latitude	Longitude
0.0	0.0	1533139.30	2339093.79	39.273884	-107.834864

FORMATION TOP DETAILS		
TVDPath	MDPath	Formation
4420.0	5105.4	Ohio Creek
4620.0	5346.4	Williams Fork
5820.0	6638.8	TOG
7020.0	7838.8	Cameo
7380.0	8198.8	Base Cameo Coal
7420.0	8238.8	Rollins



ANNOTATIONS									
MD	Inc	Azi	TVD	+N/-S	+E/-W	VSec	Departure	Annotation	
477.0	3.00	58.70	476.8	6.5	10.7	12.5	12.5	First MWD Survey @ 477.0' MD / 476.8' TVD	
8447.0	3.60	259.60	7629.5	1464.9	2500.1	2897.5	2985.2	Projection to TD @ 8447.0' MD / 7629.5' TVD	