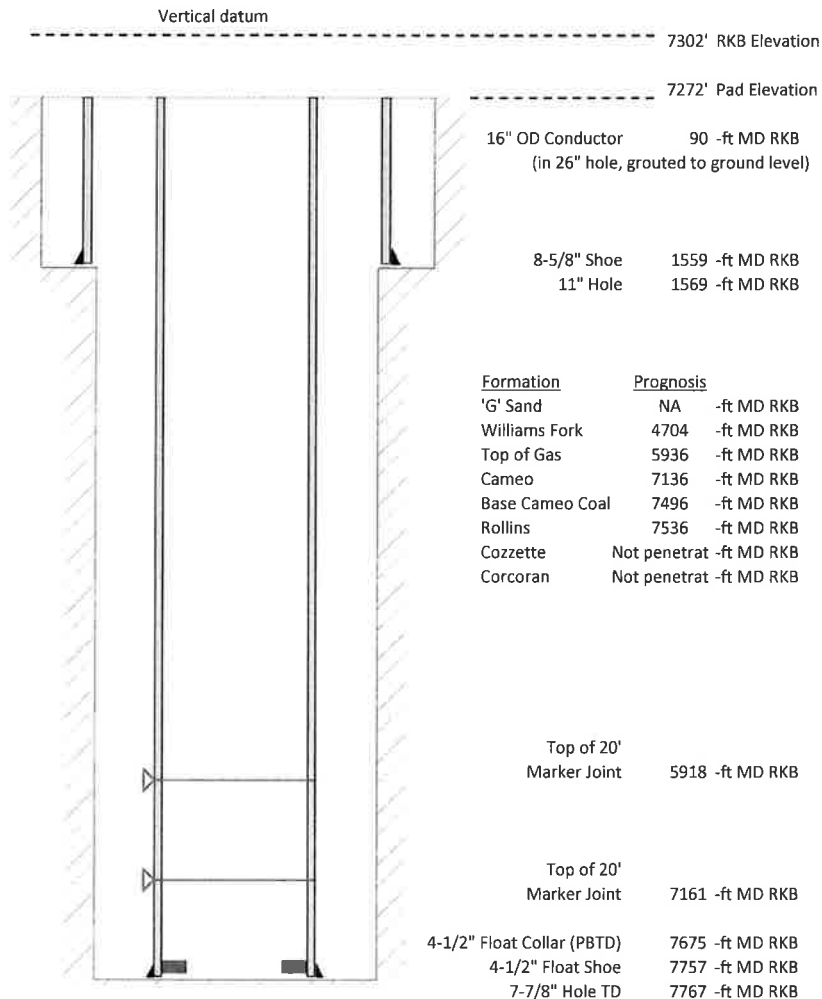


**Laramie Energy, LLC**  
**Gunderson 0994-13-10W**  
**Slot A-9**  
**H&P 522 (30-ft KB)**

API # : 05-077-10546-00  
 NE/4 SW/4 S13/T9S/R94W/6th PM  
 Mesa County, CO  
 Date of diagram : 3/12/2018



**Cementing details**

8-5/8" 24# Surface Csg	Lead	Tail
Density (ppg)	12.3	12.8
Volume (sx)	175	109
Yield (cf/sx)	2.45	2.18
Top (ft RKB)	0	585
Bottom (ft RKB)	585	1559
Returns (full or partial)	Full	Full

4-1/2" 11.6# Prod Csg	Lead	Tail
Density (ppg)	12.5	13.3
Volume (sx)	779	369
Yield (cf/sx)	1.94	1.73
Est Top (ft RKB)	190	5305
Est Bottom (ft RKB)	5305	7757
Returns (full or partial)	Full	Full

Displacement
8.3 ppg
119 bbls

Other Remarks : 34 bbls cement back on surface job. 30 bbls spacer back on production job.