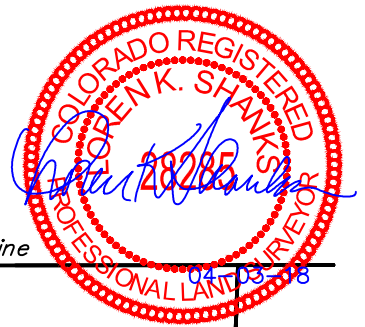


● = WELLHEAD LOCATION.
 ◆ = ENTRY TARGET.



Section 4, T4N, R104E

Section Line

LOT 1

LOT 2

1/16 Section Line

NW 1/4

NE 1/4

SW 1/4

SE 1/4

1/4 Section Line

1/16 Section Line

Section Line

7

6

1

2

3

4

5

6

L1

L2

L3

L4

L5

S00°35'06"W
7118.98'

S00°08'35"W
7116.89'

S00°25'32"W
7115.34'

S01°16'22"W
7114.08'

S00°45'00"W
7110.94'

04

PROFESSIONAL LAND SURVEYOR

A horizontal scale bar with alternating black and white segments. Above the bar, the markings are 1000', 500', 0', 500', and 1000' from left to right.

SHEET 1 OF 3

REV: 1 04-03-18 D.J.W. (WELL MOVES & ADD WELLS)

#	WELL NAME	SHL FOOTAGE			SHL LAT (NAD 83)	SHL LONG (NAD 83)	SHL PDOP	SHL ELEV.	SHL 1/4 1/4	
1	WETCO FARMS A11-4-9MRLNB	346'	FNL	172'	FWL	N 40.347739°	W 104.451679°	1.2	4570.0'	LOT 2
2	WETCO FARMS 11-4-9MRLNC	346'	FNL	192'	FWL	N 40.347739°	W 104.451608°	1.2	4570.0'	LOT 2
3	WETCO FARMS F-4-9MRLNB	346'	FNL	212'	FWL	N 40.347739°	W 104.451536°	1.2	4570.0'	LOT 2
4	WETCO FARMS 21-4-9MRLNB	346'	FNL	232'	FWL	N 40.347739°	W 104.451464°	1.2	4569.8'	LOT 2
5	WETCO FARMS K21-4-9MRLNC	346'	FNL	252'	FWL	N 40.347739°	W 104.451392°	1.2	4569.7'	LOT 2
6	EXISTING WETCO FARMS F-J-4HC	252'	FNL	169'	FWL	N 40.347999°	W 104.451684°	1.4	4569.9'	LOT 2
7	EXISTING WETCO FARMS A-4-9-MRLC	271'	FNL	170'	FWL	N 40.347945°	W 104.451683°	1.6	4569.9'	LOT 2



**BONANZA CREEK ENERGY
OPERATING COMPANY, LLC**

**WETCO FARMS A-4 PAD
LOT 2, SECTION 4, T4N, R63W, 6th P.M.
WELD COUNTY, COLORADO**

SURVEYED BY	DALLAS NIELSEN	03-14-18	SCALE
DRAWN BY	L.C.S.	12-21-16	1" = 1000'
MULTI-WELL PLAN			

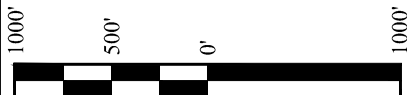
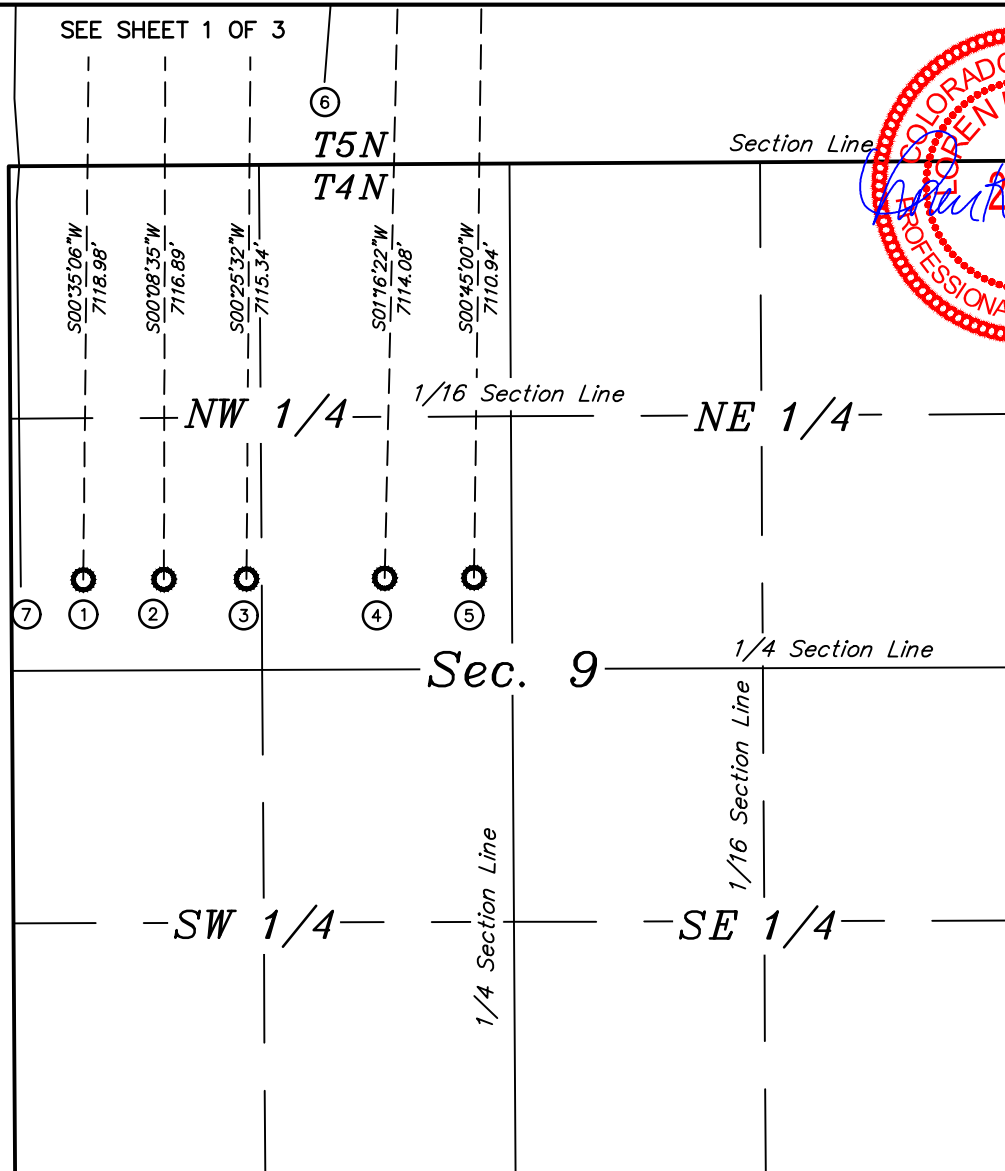


UELS, LLC
Corporate Office * 85 South 200 East
Vernal, UT 84078 * (435) 789-1017

LEGEND:

○ = TARGET BOTTOM HOLE.

SEE SHEET 1 OF 3



SHEET 2 OF 3

REV: 1 04-03-18 D.J.W. (WELL MOVES & ADD WELLS)

#	WELL NAME	SHL FOOTAGE			SHL LAT (NAD 83)	SHL LONG (NAD 83)	SHL PDOP	SHL ELEV.	SHL 1/4 1/4
1	WETCO FARMS A11-4-9MRLNB	346'	FNL	172'	N 40.347739°	W 104.451679°	1.2	4570.0'	LOT 2
2	WETCO FARMS 11-4-9MRLNC	346'	FNL	192'	N 40.347739°	W 104.451608°	1.2	4570.0'	LOT 2
3	WETCO FARMS F-4-9MRLNB	346'	FNL	212'	N 40.347739°	W 104.451536°	1.2	4570.0'	LOT 2
4	WETCO FARMS 21-4-9MRLNB	346'	FNL	232'	N 40.347739°	W 104.451464°	1.2	4569.8'	LOT 2
5	WETCO FARMS K21-4-9MRLNC	346'	FNL	252'	N 40.347739°	W 104.451392°	1.2	4569.7'	LOT 2
6	EXISTING WETCO FARMS F-J-4HC	252'	FNL	169'	N 40.347999°	W 104.451684°	1.4	4569.9'	LOT 2
7	EXISTING WETCO FARMS A-4-9-MRLC	271'	FNL	170'	N 40.347945°	W 104.451683°	1.6	4569.9'	LOT 2

NOTES:



**BONANZA CREEK ENERGY
OPERATING COMPANY, LLC**

**WETCO FARMS A-4 PAD
LOT 2, SECTION 4, T4N, R63W, 6th P.M.
WELD COUNTY, COLORADO**

SURVEYED BY	DALLAS NIELSEN	03-14-18	SCALE
DRAWN BY	L.C.S.	12-21-16	1" = 1000'
MULTI-WELL PLAN			



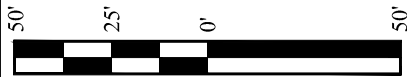
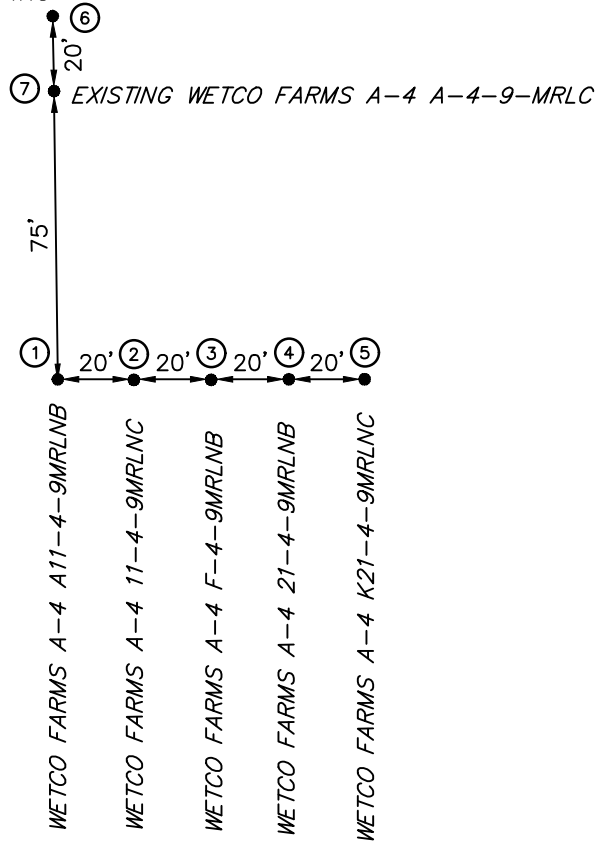
UELS, LLC
Corporate Office * 85 South 200 East
Vernal, UT 84078 * (435) 789-1017

LEGEND:

● = WELLHEAD LOCATION.



EXISTING WETCO FARMS A-4 F-J-4HC

**SHEET 3 OF 3**

REV: 1 04-03-18 D.J.W. (WELL MOVES & ADD WELLS)

#	WELL NAME	SHL FOOTAGE			SHL LAT (NAD 83)	SHL LONG (NAD 83)	SHL PDOP	SHL ELEV.	SHL 1/4 1/4
1	WETCO FARMS A11-4-9MRLNB	346'	FNL	172' FWL	N 40.347739°	W 104.451679°	1.2	4570.0'	LOT 2
2	WETCO FARMS 11-4-9MRLNC	346'	FNL	192' FWL	N 40.347739°	W 104.451608°	1.2	4570.0'	LOT 2
3	WETCO FARMS F-4-9MRLNB	346'	FNL	212' FWL	N 40.347739°	W 104.451536°	1.2	4570.0'	LOT 2
4	WETCO FARMS 21-4-9MRLNB	346'	FNL	232' FWL	N 40.347739°	W 104.451464°	1.2	4569.8'	LOT 2
5	WETCO FARMS K21-4-9MRLNC	346'	FNL	252' FWL	N 40.347739°	W 104.451392°	1.2	4569.7'	LOT 2
6	EXISTING WETCO FARMS F-J-4HC	252'	FNL	169' FWL	N 40.347999°	W 104.451684°	1.4	4569.9'	LOT 2
7	EXISTING WETCO FARMS A-4-9-MRLC	271'	FNL	170' FWL	N 40.347945°	W 104.451683°	1.6	4569.9'	LOT 2

NOTES:**BONANZA CREEK ENERGY
OPERATING COMPANY, LLC****WETCO FARMS A-4 PAD
LOT 2, SECTION 4, T4N, R63W, 6th P.M.
WELD COUNTY, COLORADO**

SURVEYED BY	DALLAS NIELSEN	03-14-18	SCALE
DRAWN BY	L.C.S.	12-21-16	1" = 50'
MULTI-WELL PLAN			

**UELS, LLC**
Corporate Office * 85 South 200 East
Vernal, UT 84078 * (435) 789-1017