

LEGEND:

 **PROPOSED LOCATION**



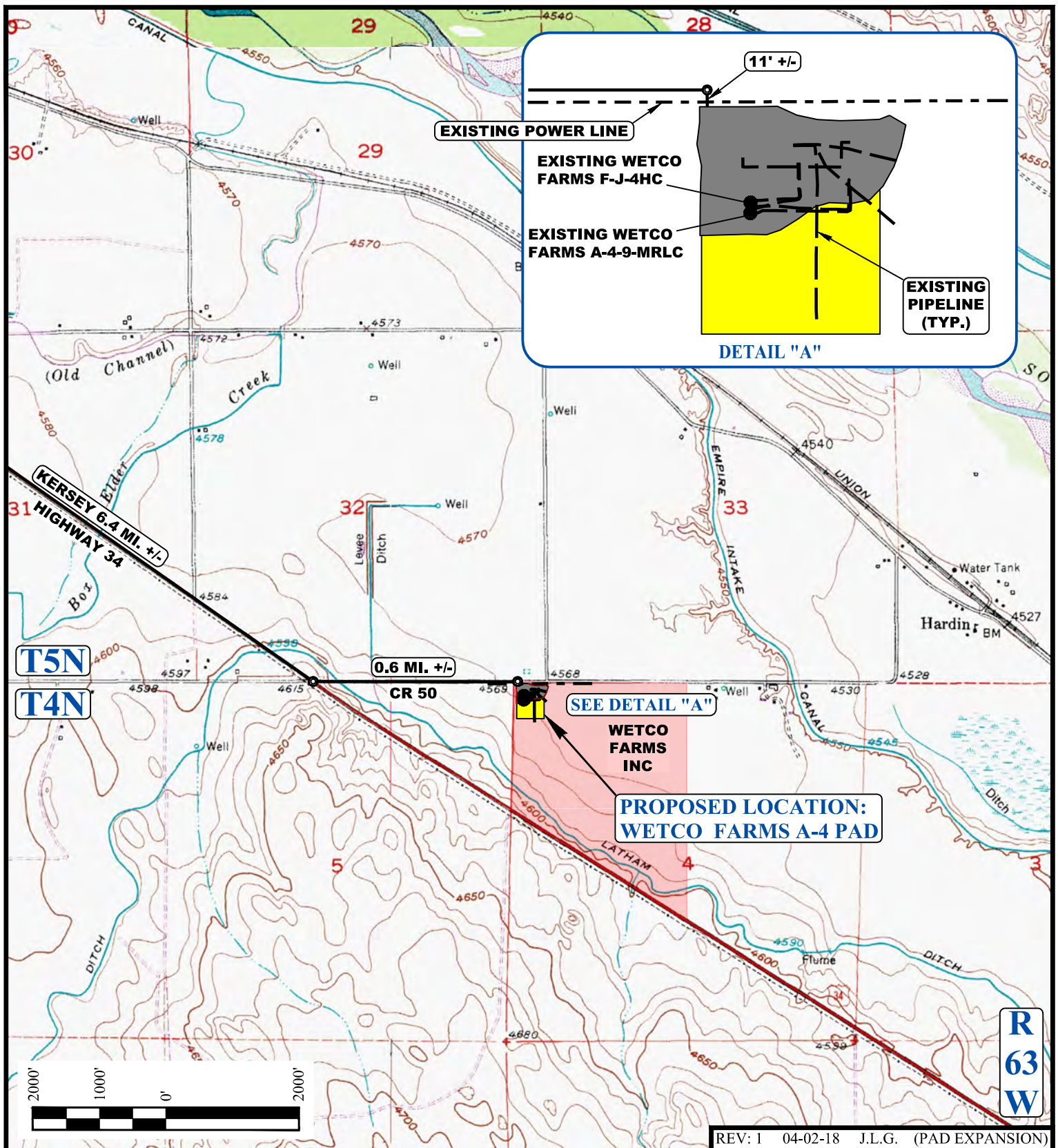
UELS, LLC
Corporate Office * 85 South 200 East
Vernal, UT 84078 * (435) 789-1017



**BONANZA CREEK ENERGY
OPERATING COMPANY, LLC**

**WETCO FARMS A-4 PAD
LOT 2, SECTION 4, T4N, R63W, 6th P.M.
WELD COUNTY, COLORADO**

SURVEYED BY	C.M., D.N.	09-14-16	SCALE
DRAWN BY	J.M.C.	01-05-17	1 : 100,000
ACCESS ROAD MAP			TOPO A



NOTE: PARCEL DATA SHOWN HAS BEEN OBTAINED FROM VARIOUS SOURCES AND SHOULD BE USED FOR MAPPING, GRAPHIC AND PLANNING PURPOSES ONLY. NO WARRANTY IS MADE BY UINTAH ENGINEERING AND LAND SURVEYING (UELS) FOR ACCURACY OF THE PARCEL DATA.

LEGEND:

- EXISTING ROAD
- - - EXISTING PIPELINE
- - - EXISTING POWER LINE



BONANZA CREEK ENERGY OPERATING COMPANY, LLC

WETCO FARMS A-4 PAD
LOT 2, SECTION 4, T4N, R63W, 6th P.M.
WELD COUNTY, COLORADO

SURVEYED BY	D.N.	03-14-18	SCALE
DRAWN BY	J.M.C.	01-05-17	1 : 24,000
ACCESS ROAD MAP			TOPO B



UELS, LLC
Corporate Office * 85 South 200 East
Vernal, UT 84078 * (435) 789-1017