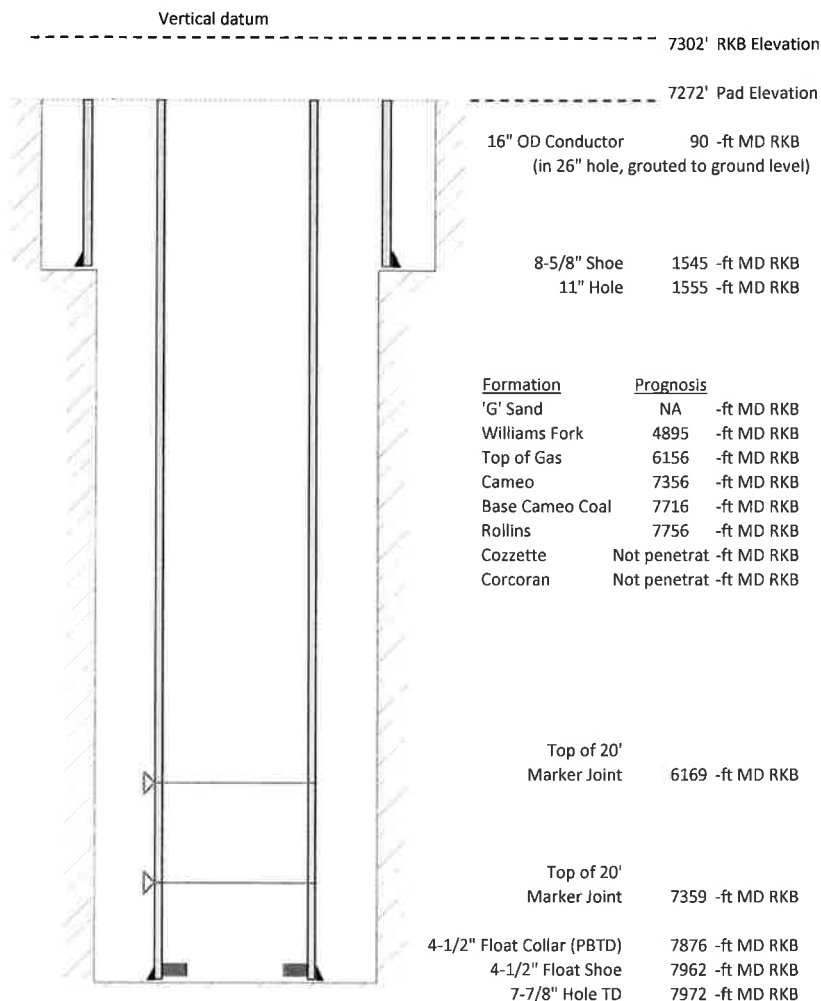


**Laramie Energy, LLC**  
**Gunderson 0994-13-07W**  
**Slot B-10**  
**H&P 522 (30-ft KB)**

API # : 05-077-10544-00  
 NE/4 SW/4 S13/T9S/R94W/6th PM  
 Mesa County, CO  
 Date of diagram : 3/3/2018



**Cementing details**

8-5/8" 24# Surface Csg	Lead	Tail
Density (ppg)	12.3	12.8
Volume (sx)	197	109
Yield (cf/sx)	2.45	2.18
Top (ft RKB)	0	1170
Bottom (ft RKB)	1170	1545
Returns (full or partial)	Full	Full

4-1/2" 11.6# Prod Csg	Lead	Tail
Density (ppg)	12.5	13.3
Volume (sx)	863	419
Yield (cf/sx)	1.94	1.73
Est Top (ft RKB)	0	4860
Est Bottom (ft RKB)	4860	7962
Returns (full or partial)	Full	Full

Displacement
8.3 ppg
122 bbls

Other Remarks : 30 bbls cement back on surface job. 22 bbls cement back on production job.