

# PDC Energy Inc. DJ Basin

---

Well Name: **Geib 26V-304**

Surface Location: Geib 5N65W26V Pad Sec.26-T5N-R65W

North American Datum 1983 , US State Plane 1983, Colorado Northern Zone

Ground Elevation: 4641.0

+N/-S	+E/-W	Northing	Easting	Latitude	Longitude	Slot
0.0	0.0	1380349.51	3244496.00	40.374140	-104.622450	

RKB - 23' WELL @ 4664.0ft (RKB - 23')

RKB - 23' WELL @ 4664.0ft (RKB - 23')

**ENSign**  
Directional

True Vertical Depth (1250 ft/in)

TPZ - 60° Inc in Curve - 1316'FNL & 776'FWL, Sec.25

40°

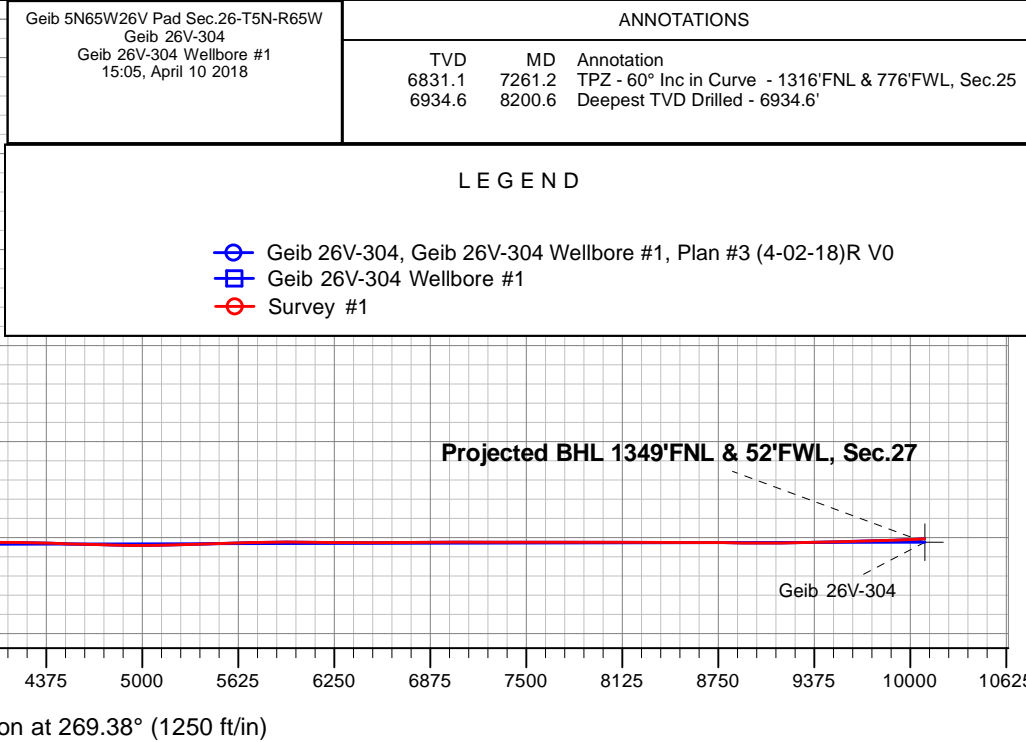
80°

6934.6'

6875'

Deepest TVD Drilled - 6934.6'

Vertical Section





## **PDC Energy Inc. DJ Basin**

**SEC.26-T5N-R65W**

**Geib 5N65W26V Pad Sec.26-T5N-R65W**

**Geib 26V-304**

**Geib 26V-304 Wellbore #1**

**Survey: Survey #1**

## **Standard Survey Report**

**10 April, 2018**

<b>Company:</b>	PDC Energy Inc. DJ Basin	<b>Local Co-ordinate Reference:</b>	Well Geib 26V-304
<b>Project:</b>	SEC.26-T5N-R65W	<b>TVD Reference:</b>	WELL @ 4664.0ft (RKB - 23')
<b>Site:</b>	Geib 5N65W26V Pad Sec.26-T5N-R65W	<b>MD Reference:</b>	WELL @ 4664.0ft (RKB - 23')
<b>Well:</b>	Geib 26V-304	<b>North Reference:</b>	True
<b>Wellbore:</b>	Geib 26V-304 Wellbore #1	<b>Survey Calculation Method:</b>	Minimum Curvature
<b>Design:</b>	Geib 26V-304 Wellbore #1	<b>Database:</b>	US_EDM

<b>Project</b>	SEC.26-T5N-R65W, Weld County, CO		
<b>Map System:</b>	US State Plane 1983	<b>System Datum:</b>	Mean Sea Level
<b>Geo Datum:</b>	North American Datum 1983		Using Well Reference Point
<b>Map Zone:</b>	Colorado Northern Zone		Using geodetic scale factor

Site	Geib 5N65W26V Pad Sec.26-T5N-R65W				
Site Position:		Northing:	1,380,407.79 usft	Latitude:	40.374300
From:	Lat/Long	Easting:	3,244,495.43 usft	Longitude:	-104.622450
Position Uncertainty:	0.0 ft	Slot Radius:	13-3/16 "	Grid Convergence:	0.57 °

Well	Geib 26V-304					
Well Position	+N/-S	0.0 ft	Northing:	1,380,349.51 usft	Latitude:	40.374140
	+E/-W	0.0 ft	Easting:	3,244,496.00 usft	Longitude:	-104.622450
Position Uncertainty		0.0 ft	Wellhead Elevation:	0.0 ft	Ground Level:	4,641.0 ft

<b>Wellbore</b>	Geib 26V-304 Wellbore #1				
<b>Magnetics</b>	<b>Model Name</b>	<b>Sample Date</b>	<b>Declination (°)</b>	<b>Dip Angle (°)</b>	<b>Field Strength (nT)</b>
	IGRF2010	4/2/2018	7.87	66.81	52,418

<b>Design</b>	Geib 26V-304 Wellbore #1				
<b>Audit Notes:</b>					
<b>Version:</b>	1.0	<b>Phase:</b>	ACTUAL	<b>Tie On Depth:</b>	0.0
<b>Vertical Section:</b>	<b>Depth From (TVD) (ft)</b>	<b>+N/-S (ft)</b>	<b>+E/-W (ft)</b>	<b>Direction (°)</b>	
	0.0	0.0	0.0	269.38	

<b>Survey Program</b>	<b>Date</b>	4/10/2018			
<b>From (ft)</b>	<b>To (ft)</b>	<b>Survey (Wellbore)</b>	<b>Tool Name</b>	<b>Description</b>	
155.0	18,551.0	Survey #1 (Geib 26V-304 Wellbore #1)	MWD	MWD - Standard	

<b>Survey</b>										
<b>Measured Depth (ft)</b>	<b>Inclination (°)</b>	<b>Azimuth (°)</b>	<b>Vertical Depth (ft)</b>	<b>+N/-S (ft)</b>	<b>+E/-W (ft)</b>	<b>Vertical Section (ft)</b>	<b>Dogleg Rate (°/100usft)</b>	<b>Build Rate (°/100usft)</b>	<b>Turn Rate (°/100usft)</b>	
0.0	0.00	0.00	0.0	0.0	0.0	0.0	0.00	0.00	0.00	
155.0	0.40	192.10	155.0	-0.5	-0.1	0.1	0.26	0.26	0.00	
250.0	0.30	231.10	250.0	-1.0	-0.4	0.4	0.27	-0.11	41.05	
346.0	0.30	219.70	346.0	-1.4	-0.7	0.7	0.06	0.00	-11.88	
442.0	0.30	242.90	442.0	-1.7	-1.1	1.1	0.13	0.00	24.17	
537.0	0.40	233.00	537.0	-2.0	-1.6	1.6	0.12	0.11	-10.42	
633.0	0.40	269.30	633.0	-2.2	-2.2	2.2	0.26	0.00	37.81	
729.0	0.40	236.70	729.0	-2.4	-2.8	2.8	0.23	0.00	-33.96	
825.0	0.80	254.30	825.0	-2.7	-3.7	3.8	0.45	0.42	18.33	
920.0	0.70	257.70	920.0	-3.0	-5.0	5.0	0.12	-0.11	3.58	

<b>Company:</b>	PDC Energy Inc. DJ Basin	<b>Local Co-ordinate Reference:</b>	Well Geib 26V-304
<b>Project:</b>	SEC.26-T5N-R65W	<b>TVD Reference:</b>	WELL @ 4664.0ft (RKB - 23')
<b>Site:</b>	Geib 5N65W26V Pad Sec.26-T5N-R65W	<b>MD Reference:</b>	WELL @ 4664.0ft (RKB - 23')
<b>Well:</b>	Geib 26V-304	<b>North Reference:</b>	True
<b>Wellbore:</b>	Geib 26V-304 Wellbore #1	<b>Survey Calculation Method:</b>	Minimum Curvature
<b>Design:</b>	Geib 26V-304 Wellbore #1	<b>Database:</b>	US_EDM

Survey									
Measured Depth (ft)	Inclination (°)	Azimuth (°)	Vertical Depth (ft)	+N/-S (ft)	+E/-W (ft)	Vertical Section (ft)	Dogleg Rate (°/100usft)	Build Rate (°/100usft)	Turn Rate (°/100usft)
1,016.0	0.90	76.40	1,016.0	-3.0	-4.8	4.8	1.67	0.21	186.15
1,112.0	2.70	91.70	1,111.9	-2.9	-1.8	1.8	1.92	1.88	15.94
1,207.0	4.60	89.30	1,206.7	-2.9	4.2	-4.2	2.01	2.00	-2.53
1,303.0	6.00	90.80	1,302.3	-2.9	13.1	-13.1	1.47	1.46	1.56
1,399.0	7.40	94.40	1,397.7	-3.5	24.3	-24.3	1.52	1.46	3.75
1,494.0	7.90	93.30	1,491.8	-4.3	36.9	-36.9	0.55	0.53	-1.16
1,590.0	8.90	96.30	1,586.8	-5.5	50.9	-50.8	1.14	1.04	3.13
1,682.0	9.40	97.30	1,677.6	-7.2	65.4	-65.3	0.57	0.54	1.09
1,778.0	11.30	101.40	1,772.0	-10.1	82.4	-82.3	2.12	1.98	4.27
1,874.0	13.60	100.00	1,865.8	-13.9	102.7	-102.6	2.42	2.40	-1.46
1,970.0	16.20	97.50	1,958.5	-17.6	127.1	-126.9	2.79	2.71	-2.60
2,065.0	19.70	97.50	2,048.9	-21.4	156.2	-155.9	3.68	3.68	0.00
2,161.0	19.40	96.80	2,139.4	-25.4	188.0	-187.8	0.40	-0.31	-0.73
2,257.0	18.90	95.80	2,230.1	-28.9	219.3	-219.0	0.62	-0.52	-1.04
2,352.0	20.90	94.20	2,319.4	-31.7	251.5	-251.2	2.18	2.11	-1.68
2,448.0	22.40	93.70	2,408.6	-34.1	286.9	-286.5	1.57	1.56	-0.52
2,544.0	21.90	92.10	2,497.5	-36.0	323.0	-322.6	0.82	-0.52	-1.67
2,639.0	24.40	95.10	2,584.9	-38.4	360.3	-359.8	2.91	2.63	3.16
2,735.0	24.50	95.10	2,672.3	-41.9	399.9	-399.4	0.10	0.10	0.00
2,831.0	24.80	94.70	2,759.5	-45.3	439.8	-439.2	0.36	0.31	-0.42
2,926.0	24.10	93.30	2,846.0	-48.1	479.0	-478.4	0.96	-0.74	-1.47
3,022.0	23.90	91.40	2,933.7	-49.7	518.0	-517.4	0.83	-0.21	-1.98
3,117.0	23.40	90.80	3,020.7	-50.4	556.1	-555.5	0.58	-0.53	-0.63
3,213.0	22.90	89.30	3,109.0	-50.4	593.8	-593.2	0.81	-0.52	-1.56
3,308.0	21.50	89.40	3,196.9	-50.0	629.7	-629.1	1.47	-1.47	0.11
3,403.0	20.50	88.20	3,285.6	-49.3	663.7	-663.2	1.15	-1.05	-1.26
3,499.0	19.70	87.10	3,375.8	-48.0	696.7	-696.2	0.92	-0.83	-1.15
3,595.0	18.90	87.10	3,466.4	-46.4	728.4	-727.9	0.83	-0.83	0.00
3,690.0	19.40	88.90	3,556.1	-45.3	759.5	-759.0	0.81	0.53	1.89
3,785.0	20.40	91.70	3,645.5	-45.5	791.9	-791.3	1.45	1.05	2.95
3,881.0	20.90	95.60	3,735.3	-47.7	825.6	-825.1	1.52	0.52	4.06
3,977.0	22.30	98.70	3,824.6	-52.1	860.7	-860.1	1.88	1.46	3.23
4,073.0	22.20	98.70	3,913.4	-57.6	896.6	-895.9	0.10	-0.10	0.00
4,168.0	23.30	99.60	4,001.0	-63.4	932.9	-932.1	1.21	1.16	0.95
4,264.0	22.10	98.60	4,089.6	-69.3	969.5	-968.7	1.31	-1.25	-1.04
4,359.0	24.30	99.50	4,176.9	-75.2	1,006.4	-1,005.5	2.35	2.32	0.95
4,455.0	23.10	99.50	4,264.8	-81.6	1,044.5	-1,043.5	1.25	-1.25	0.00
4,551.0	24.50	100.90	4,352.6	-88.4	1,082.6	-1,081.6	1.57	1.46	1.46
4,646.0	25.40	100.70	4,438.8	-95.9	1,122.0	-1,120.9	0.95	0.95	-0.21
4,742.0	24.40	101.00	4,525.8	-103.5	1,161.7	-1,160.5	1.05	-1.04	0.31
4,838.0	22.90	99.80	4,613.8	-110.5	1,199.5	-1,198.3	1.64	-1.56	-1.25
4,933.0	21.90	100.00	4,701.6	-116.7	1,235.2	-1,233.9	1.06	-1.05	0.21
5,028.0	21.00	99.50	4,790.0	-122.6	1,269.4	-1,268.0	0.97	-0.95	-0.53
5,124.0	21.70	94.40	4,879.4	-126.8	1,304.1	-1,302.6	2.07	0.73	-5.31

<b>Company:</b>	PDC Energy Inc. DJ Basin	<b>Local Co-ordinate Reference:</b>	Well Geib 26V-304
<b>Project:</b>	SEC.26-T5N-R65W	<b>TVD Reference:</b>	WELL @ 4664.0ft (RKB - 23')
<b>Site:</b>	Geib 5N65W26V Pad Sec.26-T5N-R65W	<b>MD Reference:</b>	WELL @ 4664.0ft (RKB - 23')
<b>Well:</b>	Geib 26V-304	<b>North Reference:</b>	True
<b>Wellbore:</b>	Geib 26V-304 Wellbore #1	<b>Survey Calculation Method:</b>	Minimum Curvature
<b>Design:</b>	Geib 26V-304 Wellbore #1	<b>Database:</b>	US_EDM

Survey										
Measured Depth (ft)	Inclination (°)	Azimuth (°)	Vertical Depth (ft)	+N/-S (ft)	+E/-W (ft)	Vertical Section (ft)	Dogleg Rate (°/100usft)	Build Rate (°/100usft)	Turn Rate (°/100usft)	
5,219.0	21.40	92.90	4,967.8	-129.0	1,338.9	-1,337.4	0.66	-0.32	-1.58	
5,315.0	20.70	93.10	5,057.4	-130.8	1,373.3	-1,371.9	0.73	-0.73	0.21	
5,410.0	19.40	92.40	5,146.6	-132.4	1,405.9	-1,404.4	1.39	-1.37	-0.74	
5,506.0	17.50	88.40	5,237.7	-132.7	1,436.2	-1,434.7	2.38	-1.98	-4.17	
5,602.0	15.70	92.10	5,329.7	-132.8	1,463.6	-1,462.1	2.17	-1.88	3.85	
5,697.0	14.20	95.80	5,421.5	-134.4	1,488.1	-1,486.5	1.87	-1.58	3.89	
5,793.0	12.10	94.50	5,515.0	-136.4	1,509.8	-1,508.3	2.21	-2.19	-1.35	
5,889.0	9.40	88.40	5,609.3	-137.0	1,527.7	-1,526.1	3.05	-2.81	-6.35	
5,984.0	8.40	87.10	5,703.1	-136.4	1,542.4	-1,540.8	1.07	-1.05	-1.37	
6,080.0	6.20	88.40	5,798.3	-135.9	1,554.6	-1,553.0	2.30	-2.29	1.35	
6,176.0	3.60	74.10	5,894.0	-134.9	1,562.7	-1,561.1	2.97	-2.71	-14.90	
6,272.0	1.40	61.00	5,989.9	-133.5	1,566.6	-1,565.1	2.35	-2.29	-13.65	
6,367.0	0.50	211.80	6,084.9	-133.3	1,567.4	-1,565.9	1.95	-0.95	158.74	
6,463.0	0.90	208.10	6,180.9	-134.3	1,566.8	-1,565.3	0.42	0.42	-3.85	
6,559.0	5.80	263.80	6,276.7	-135.5	1,561.6	-1,560.1	5.57	5.10	58.02	
6,655.0	15.20	271.40	6,371.0	-135.7	1,544.2	-1,542.6	9.88	9.79	7.92	
6,750.0	22.50	278.20	6,460.8	-132.8	1,513.7	-1,512.2	8.01	7.68	7.16	
6,845.0	28.10	277.90	6,546.7	-127.2	1,473.5	-1,472.1	5.90	5.89	-0.32	
6,941.0	39.70	276.50	6,626.2	-120.6	1,420.5	-1,419.1	12.11	12.08	-1.46	
7,037.0	47.40	273.70	6,695.8	-114.8	1,354.6	-1,353.3	8.27	8.02	-2.92	
7,133.0	50.80	268.90	6,758.6	-113.2	1,282.1	-1,280.9	5.18	3.54	-5.00	
7,228.0	57.90	270.50	6,814.0	-113.6	1,205.0	-1,203.7	7.60	7.47	1.68	
7,261.2	60.00	270.25	6,831.1	-113.4	1,176.6	-1,175.3	6.35	6.31	-0.77	
TPZ - 60° Inc in Curve - 1316'FNL & 776'FWL, Sec.25										
7,323.0	63.90	269.80	6,860.1	-113.4	1,122.0	-1,120.7	6.35	6.32	-0.72	
7,419.0	72.50	270.00	6,895.8	-113.5	1,033.0	-1,031.7	8.96	8.96	0.21	
7,514.0	80.90	269.10	6,917.6	-114.3	940.6	-939.3	8.89	8.84	-0.95	
7,610.0	88.30	269.30	6,926.6	-115.6	845.1	-843.8	7.71	7.71	0.21	
7,706.0	89.10	269.30	6,928.8	-116.8	749.2	-747.9	0.83	0.83	0.00	
7,830.0	89.60	269.40	6,930.2	-118.2	625.2	-623.9	0.41	0.40	0.08	
7,926.0	89.20	268.90	6,931.2	-119.6	529.2	-527.9	0.67	-0.42	-0.52	
8,022.0	89.00	268.40	6,932.7	-121.9	433.2	-431.9	0.56	-0.21	-0.52	
8,117.0	89.40	267.90	6,934.1	-124.9	338.3	-336.9	0.67	0.42	-0.53	
8,200.6	89.92	267.99	6,934.5	-127.9	254.7	-253.3	0.63	0.63	0.10	
Deepest TVD Drilled - 6934.6'										
8,213.0	90.00	268.00	6,934.6	-128.4	242.4	-240.9	0.63	0.63	0.10	
8,308.0	91.50	268.70	6,933.3	-131.1	147.4	-146.0	1.74	1.58	0.74	
8,404.0	92.20	268.60	6,930.2	-133.4	51.5	-50.0	0.74	0.73	-0.10	
8,499.0	92.20	268.00	6,926.6	-136.2	-43.4	44.9	0.63	0.00	-0.63	
8,595.0	91.70	269.10	6,923.3	-138.6	-139.3	140.8	1.26	-0.52	1.15	
8,690.0	91.90	269.10	6,920.3	-140.1	-234.3	235.8	0.21	0.21	0.00	
8,785.0	89.40	269.80	6,919.2	-141.0	-329.2	330.7	2.73	-2.63	0.74	
8,881.0	89.30	271.20	6,920.3	-140.2	-425.2	426.7	1.46	-0.10	1.46	

<b>Company:</b>	PDC Energy Inc. DJ Basin	<b>Local Co-ordinate Reference:</b>	Well Geib 26V-304
<b>Project:</b>	SEC.26-T5N-R65W	<b>TVD Reference:</b>	WELL @ 4664.0ft (RKB - 23')
<b>Site:</b>	Geib 5N65W26V Pad Sec.26-T5N-R65W	<b>MD Reference:</b>	WELL @ 4664.0ft (RKB - 23')
<b>Well:</b>	Geib 26V-304	<b>North Reference:</b>	True
<b>Wellbore:</b>	Geib 26V-304 Wellbore #1	<b>Survey Calculation Method:</b>	Minimum Curvature
<b>Design:</b>	Geib 26V-304 Wellbore #1	<b>Database:</b>	US_EDM

Survey									
Measured Depth (ft)	Inclination (°)	Azimuth (°)	Vertical Depth (ft)	+N/-S (ft)	+E/-W (ft)	Vertical Section (ft)	Dogleg Rate (°/100usft)	Build Rate (°/100usft)	Turn Rate (°/100usft)
8,977.0	89.20	270.70	6,921.6	-138.6	-521.2	522.7	0.53	-0.10	-0.52
9,072.0	89.60	271.00	6,922.6	-137.2	-616.2	617.6	0.53	0.42	0.32
9,168.0	89.90	270.80	6,923.0	-135.7	-712.2	713.6	0.38	0.31	-0.21
9,264.0	89.90	270.80	6,923.2	-134.3	-808.2	809.6	0.00	0.00	0.00
9,359.0	90.00	270.70	6,923.3	-133.1	-903.2	904.5	0.15	0.11	-0.11
9,455.0	90.50	270.70	6,922.8	-131.9	-999.2	1,000.5	0.52	0.52	0.00
9,550.0	90.70	270.80	6,921.8	-130.7	-1,094.1	1,095.5	0.24	0.21	0.11
9,646.0	91.00	270.30	6,920.4	-129.8	-1,190.1	1,191.5	0.61	0.31	-0.52
9,742.0	90.10	271.20	6,919.5	-128.5	-1,286.1	1,287.4	1.33	-0.94	0.94
9,837.0	90.60	271.00	6,918.9	-126.7	-1,381.1	1,382.4	0.57	0.53	-0.21
9,932.0	91.50	271.50	6,917.2	-124.6	-1,476.1	1,477.3	1.08	0.95	0.53
10,028.0	88.90	271.00	6,916.8	-122.5	-1,572.0	1,573.3	2.76	-2.71	-0.52
10,123.0	89.10	270.80	6,918.5	-121.0	-1,667.0	1,668.2	0.30	0.21	-0.21
10,219.0	89.50	270.50	6,919.7	-119.9	-1,763.0	1,764.2	0.52	0.42	-0.31
10,315.0	89.20	270.00	6,920.8	-119.5	-1,859.0	1,860.2	0.61	-0.31	-0.52
10,410.0	90.00	270.00	6,921.4	-119.5	-1,954.0	1,955.1	0.84	0.84	0.00
10,506.0	90.20	270.10	6,921.3	-119.4	-2,050.0	2,051.1	0.23	0.21	0.10
10,601.0	90.70	270.30	6,920.5	-119.1	-2,145.0	2,146.1	0.57	0.53	0.21
10,697.0	90.70	270.10	6,919.3	-118.8	-2,241.0	2,242.1	0.21	0.00	-0.21
10,793.0	90.70	270.50	6,918.2	-118.3	-2,336.9	2,338.1	0.42	0.00	0.42
10,888.0	91.00	270.50	6,916.7	-117.4	-2,431.9	2,433.1	0.32	0.32	0.00
10,984.0	90.60	269.10	6,915.4	-117.8	-2,527.9	2,529.0	1.52	-0.42	-1.46
11,079.0	90.80	268.60	6,914.2	-119.7	-2,622.9	2,624.0	0.57	0.21	-0.53
11,174.0	91.30	268.40	6,912.5	-122.2	-2,717.8	2,719.0	0.57	0.53	-0.21
11,270.0	89.30	270.30	6,912.0	-123.2	-2,813.8	2,815.0	2.87	-2.08	1.98
11,365.0	89.50	269.80	6,913.0	-123.2	-2,908.8	2,910.0	0.57	0.21	-0.53
11,461.0	88.90	271.50	6,914.3	-122.1	-3,004.8	3,005.9	1.88	-0.63	1.77
11,556.0	89.20	271.00	6,915.9	-120.0	-3,099.8	3,100.9	0.61	0.32	-0.53
11,652.0	89.90	271.70	6,916.7	-117.7	-3,195.7	3,196.8	1.03	0.73	0.73
11,748.0	90.70	271.90	6,916.2	-114.7	-3,291.7	3,292.7	0.86	0.83	0.21
11,844.0	90.70	271.20	6,915.0	-112.1	-3,387.6	3,388.7	0.73	0.00	-0.73
11,940.0	91.20	271.50	6,913.4	-109.9	-3,483.6	3,484.6	0.61	0.52	0.31
12,036.0	91.00	270.70	6,911.6	-108.0	-3,579.6	3,580.5	0.86	-0.21	-0.83
12,131.0	91.30	270.80	6,909.7	-106.8	-3,674.5	3,675.5	0.33	0.32	0.11
12,226.0	90.20	269.40	6,908.4	-106.6	-3,769.5	3,770.5	1.87	-1.16	-1.47
12,321.0	90.10	269.30	6,908.2	-107.7	-3,864.5	3,865.5	0.15	-0.11	-0.11
12,416.0	90.60	269.30	6,907.6	-108.8	-3,959.5	3,960.5	0.53	0.53	0.00
12,512.0	90.00	270.10	6,907.1	-109.4	-4,055.5	4,056.5	1.04	-0.63	0.83
12,607.0	90.30	270.30	6,906.8	-109.0	-4,150.5	4,151.4	0.38	0.32	0.21
12,703.0	88.10	269.40	6,908.2	-109.3	-4,246.5	4,247.4	2.48	-2.29	-0.94
12,798.0	88.30	269.40	6,911.2	-110.3	-4,341.4	4,342.4	0.21	0.21	0.00
12,894.0	88.20	269.40	6,914.1	-111.3	-4,437.4	4,438.3	0.10	-0.10	0.00
12,989.0	88.40	268.70	6,916.9	-112.8	-4,532.3	4,533.3	0.77	0.21	-0.74
13,085.0	88.60	268.70	6,919.4	-115.0	-4,628.3	4,629.3	0.21	0.21	0.00

<b>Company:</b>	PDC Energy Inc. DJ Basin	<b>Local Co-ordinate Reference:</b>	Well Geib 26V-304
<b>Project:</b>	SEC.26-T5N-R65W	<b>TVD Reference:</b>	WELL @ 4664.0ft (RKB - 23')
<b>Site:</b>	Geib 5N65W26V Pad Sec.26-T5N-R65W	<b>MD Reference:</b>	WELL @ 4664.0ft (RKB - 23')
<b>Well:</b>	Geib 26V-304	<b>North Reference:</b>	True
<b>Wellbore:</b>	Geib 26V-304 Wellbore #1	<b>Survey Calculation Method:</b>	Minimum Curvature
<b>Design:</b>	Geib 26V-304 Wellbore #1	<b>Database:</b>	US_EDM

Survey									
Measured Depth (ft)	Inclination (°)	Azimuth (°)	Vertical Depth (ft)	+N/-S (ft)	+E/-W (ft)	Vertical Section (ft)	Dogleg Rate (°/100usft)	Build Rate (°/100usft)	Turn Rate (°/100usft)
13,180.0	88.60	268.70	6,921.7	-117.2	-4,723.2	4,724.2	0.00	0.00	0.00
13,275.0	88.70	268.60	6,924.0	-119.4	-4,818.2	4,819.2	0.15	0.11	-0.11
13,370.0	88.30	268.20	6,926.5	-122.1	-4,913.1	4,914.1	0.60	-0.42	-0.42
13,465.0	91.00	268.70	6,927.0	-124.6	-5,008.1	5,009.1	2.89	2.84	0.53
13,561.0	91.00	268.40	6,925.4	-127.1	-5,104.0	5,105.1	0.31	0.00	-0.31
13,657.0	91.50	268.60	6,923.3	-129.6	-5,200.0	5,201.1	0.56	0.52	0.21
13,753.0	91.40	271.20	6,920.8	-129.7	-5,295.9	5,297.0	2.71	-0.10	2.71
13,848.0	91.80	270.70	6,918.2	-128.2	-5,390.9	5,391.9	0.67	0.42	-0.53
13,945.0	92.00	270.30	6,915.0	-127.3	-5,487.8	5,488.9	0.46	0.21	-0.41
14,040.0	92.20	270.70	6,911.5	-126.5	-5,582.7	5,583.8	0.47	0.21	0.42
14,135.0	91.40	271.20	6,908.5	-124.9	-5,677.7	5,678.7	0.99	-0.84	0.53
14,231.0	91.50	270.80	6,906.1	-123.2	-5,773.6	5,774.6	0.43	0.10	-0.42
14,326.0	89.60	270.10	6,905.2	-122.5	-5,868.6	5,869.6	2.13	-2.00	-0.74
14,422.0	90.10	270.10	6,905.4	-122.3	-5,964.6	5,965.6	0.52	0.52	0.00
14,517.0	89.00	270.50	6,906.2	-121.8	-6,059.6	6,060.6	1.23	-1.16	0.42
14,612.0	89.40	270.30	6,907.5	-121.2	-6,154.6	6,155.6	0.47	0.42	-0.21
14,707.0	90.30	270.30	6,907.7	-120.7	-6,249.6	6,250.5	0.95	0.95	0.00
14,803.0	89.10	269.80	6,908.2	-120.6	-6,345.6	6,346.5	1.35	-1.25	-0.52
14,898.0	90.00	270.10	6,909.0	-120.7	-6,440.6	6,441.5	1.00	0.95	0.32
14,994.0	90.20	269.60	6,908.8	-120.9	-6,536.6	6,537.5	0.56	0.21	-0.52
15,089.0	90.80	269.80	6,908.0	-121.4	-6,631.6	6,632.5	0.67	0.63	0.21
15,184.0	91.20	269.30	6,906.3	-122.2	-6,726.6	6,727.5	0.67	0.42	-0.53
15,280.0	89.60	269.10	6,905.7	-123.5	-6,822.6	6,823.5	1.68	-1.67	-0.21
15,376.0	89.90	269.10	6,906.1	-125.0	-6,918.5	6,919.5	0.31	0.31	0.00
15,471.0	90.70	269.30	6,905.6	-126.3	-7,013.5	7,014.5	0.87	0.84	0.21
15,567.0	89.60	269.60	6,905.3	-127.3	-7,109.5	7,110.5	1.19	-1.15	0.31
15,663.0	90.00	269.40	6,905.7	-128.1	-7,205.5	7,206.5	0.47	0.42	-0.21
15,758.0	90.60	269.10	6,905.2	-129.3	-7,300.5	7,301.5	0.71	0.63	-0.32
15,854.0	89.20	270.80	6,905.3	-129.4	-7,396.5	7,397.5	2.29	-1.46	1.77
15,949.0	90.00	271.20	6,906.0	-127.8	-7,491.5	7,492.4	0.94	0.84	0.42
16,045.0	90.70	271.00	6,905.4	-125.9	-7,587.5	7,588.4	0.76	0.73	-0.21
16,140.0	89.20	271.90	6,905.5	-123.5	-7,682.4	7,683.3	1.84	-1.58	0.95
16,236.0	89.60	271.50	6,906.5	-120.7	-7,778.4	7,779.2	0.59	0.42	-0.42
16,332.0	90.20	271.50	6,906.7	-118.2	-7,874.3	7,875.2	0.63	0.63	0.00
16,427.0	90.60	270.70	6,906.0	-116.3	-7,969.3	7,970.1	0.94	0.42	-0.84
16,523.0	89.30	271.70	6,906.1	-114.3	-8,065.3	8,066.1	1.71	-1.35	1.04
16,619.0	90.00	271.50	6,906.7	-111.6	-8,161.3	8,162.0	0.76	0.73	-0.21
16,715.0	90.80	271.20	6,906.0	-109.4	-8,257.2	8,257.9	0.89	0.83	-0.31
16,811.0	88.90	271.50	6,906.3	-107.1	-8,353.2	8,353.9	2.00	-1.98	0.31
16,906.0	89.60	270.80	6,907.5	-105.2	-8,448.2	8,448.8	1.04	0.74	-0.74
17,002.0	90.40	270.80	6,907.5	-103.9	-8,544.2	8,544.8	0.83	0.83	0.00
17,097.0	89.30	270.80	6,907.8	-102.6	-8,639.2	8,639.8	1.16	-1.16	0.00
17,193.0	90.50	271.20	6,907.9	-100.9	-8,735.1	8,735.7	1.32	1.25	0.42

<b>Company:</b>	PDC Energy Inc. DJ Basin	<b>Local Co-ordinate Reference:</b>	Well Geib 26V-304
<b>Project:</b>	SEC.26-T5N-R65W	<b>TVD Reference:</b>	WELL @ 4664.0ft (RKB - 23')
<b>Site:</b>	Geib 5N65W26V Pad Sec.26-T5N-R65W	<b>MD Reference:</b>	WELL @ 4664.0ft (RKB - 23')
<b>Well:</b>	Geib 26V-304	<b>North Reference:</b>	True
<b>Wellbore:</b>	Geib 26V-304 Wellbore #1	<b>Survey Calculation Method:</b>	Minimum Curvature
<b>Design:</b>	Geib 26V-304 Wellbore #1	<b>Database:</b>	US_EDM

Survey										
Measured Depth (ft)	Inclination (°)	Azimuth (°)	Vertical Depth (ft)	+N/-S (ft)	+E/-W (ft)	Vertical Section (ft)	Dogleg Rate (°/100usft)	Build Rate (°/100usft)	Turn Rate (°/100usft)	
17,289.0	88.70	270.50	6,908.6	-99.5	-8,831.1	8,831.7	2.01	-1.88	-0.73	
17,385.0	89.00	270.10	6,910.5	-99.0	-8,927.1	8,927.6	0.52	0.31	-0.42	
17,481.0	90.00	270.00	6,911.4	-98.9	-9,023.1	9,023.6	1.05	1.04	-0.10	
17,576.0	91.50	270.10	6,910.1	-98.8	-9,118.1	9,118.6	1.58	1.58	0.11	
17,672.0	89.90	270.30	6,908.9	-98.4	-9,214.1	9,214.6	1.68	-1.67	0.21	
17,768.0	91.40	270.00	6,907.8	-98.2	-9,310.1	9,310.6	1.59	1.56	-0.31	
17,863.0	90.40	270.50	6,906.4	-97.8	-9,405.0	9,405.6	1.18	-1.05	0.53	
17,959.0	91.40	269.80	6,904.8	-97.5	-9,501.0	9,501.5	1.27	1.04	-0.73	
18,055.0	93.00	270.10	6,901.2	-97.6	-9,597.0	9,597.5	1.70	1.67	0.31	
18,151.0	91.60	269.10	6,897.3	-98.3	-9,692.9	9,693.4	1.79	-1.46	-1.04	
18,246.0	91.10	268.70	6,895.1	-100.1	-9,787.8	9,788.3	0.67	-0.53	-0.42	
18,342.0	91.50	268.00	6,892.9	-102.9	-9,883.8	9,884.3	0.84	0.42	-0.73	
18,438.0	92.60	268.60	6,889.5	-105.7	-9,979.7	9,980.2	1.31	1.15	0.63	
18,491.0	93.20	268.20	6,886.8	-107.2	-10,032.6	10,033.1	1.36	1.13	-0.75	
18,551.0	93.20	268.20	6,883.4	-109.1	-10,092.4	10,093.0	0.00	0.00	0.00	

Design Targets										
Target Name	Dip Angle (°)	Dip Dir. (°)	TVD (ft)	+N/-S (ft)	+E/-W (ft)	Northing (usft)	Easting (usft)	Latitude	Longitude	
- hit/miss target										
- Shape										
SHL 1208'FNL & 400'FE	0.00	0.00	1.0	0.0	0.0	1,380,349.51	3,244,496.00	40.374140	-104.622450	
- survey hits target center										
- Point										
BHL 1336'FNL & 50'FWL	0.00	0.00	6,905.0	-96.1	-10,094.8	1,380,153.50	3,234,403.13	40.373871	-104.658680	
- survey misses target center by 25.3ft at 18551.0ft MD (6883.4 TVD, -109.1 N, -10092.4 E)										
- Point										

Survey Annotations					
Measured Depth (ft)	Vertical Depth (ft)	Local Coordinates			
		+N/-S (ft)	+E/-W (ft)	Comment	
7,261.2	6,831.1	-113.4	1,176.6	TPZ - 60° Inc in Curve - 1316'FNL & 776'FWL, Sec.25	
8,200.6	6,934.5	-127.9	254.7	Deepest TVD Drilled - 6934.6'	

Checked By: _____	Approved By: _____	Date: _____
-------------------	--------------------	-------------