

BRAN-DEX

WIRELINE SERVICES

GAMMA RAY
CEMENT BOND

Company ENCANA ENERGY RESOURCES
Well PARKER 11-33
Field WATTENBERG
Country WELD
State/Prv COLORADO

Company ENCANA ENERGY
Well PARKER 11-33
Field WATTENBERG
Country WELD
State/Prv COLORADO

Location NW / NW
460' FNL & 460' FWL
SEC. 33 TWP. 3N RGE. 67W
Permanent Datum GL
Log Measured From KB
Drilling Measured From KB
Elevation 4796
Other Services
PERFORATE
K.B. 4812
D.F. 4811
G.L. 4796

Date	APRIL 26, 2002	Run Number	ONE
Depth Driller	7863	Depth Logger	7823
Bottom Logged Interval	7817	Top Log Interval	6100
Open Hole Size		Type Fluid	WATER
Density / Viscosity		Max. Recorded Temp.	270
Estimated Cement Top	6220	Time Well Ready	
Time Logger on Bottom		Equipment Number	
Location		Recorded By	CLIFF KAISER
Witnessed By	TIM SHERWOOD		
Borehole Record			
Run Number	Bit	From	To
		Size	Weight
			From
			To
Tubing Record			
Casing Record	Size	Wgt/Ft	Top
Surface String			Bottom
Prot. String	4.5		
Production String			
Liner			

<<< Feld Here >>>

All interpretations are opinions based on inferences from electrical or other measurements and we cannot and do not guarantee the accuracy or correctness of any interpretation, and we shall not, except in the case of gross or wilful negligence on our part, be liable or responsible for any loss, costs, damages, or expenses incurred or sustained by anyone resulting from any interpretation made by any of our officers, agents or employees. These interpretations are also subject to our general terms and conditions set out in our current Price Schedule.

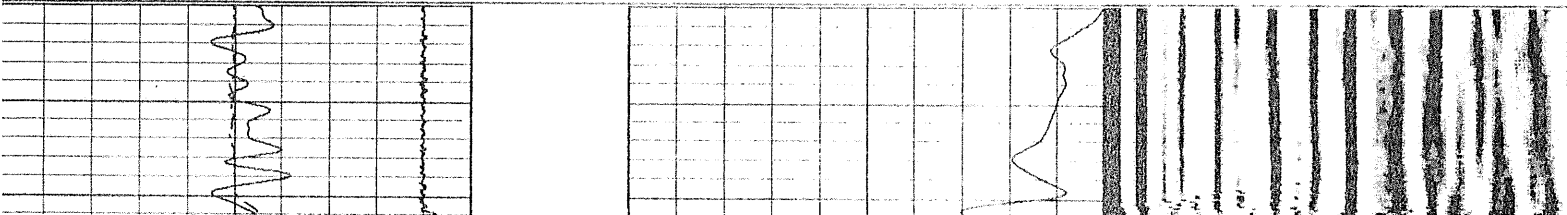
Comments

BRAN-DEX CORRECTED 4' UP HOLE TO CORROLATE
THANK YOU FOR USING BRAN-DEX WIRELINE SERVICES

Database File: tim.db
Dataset Pathname: pass2
Presentation Format: cbl01
Dataset Creation: Fri Apr 26 07:44:35 2002 by Log 6.2_B4
Charted by: Depth in Feet scaled 1:240

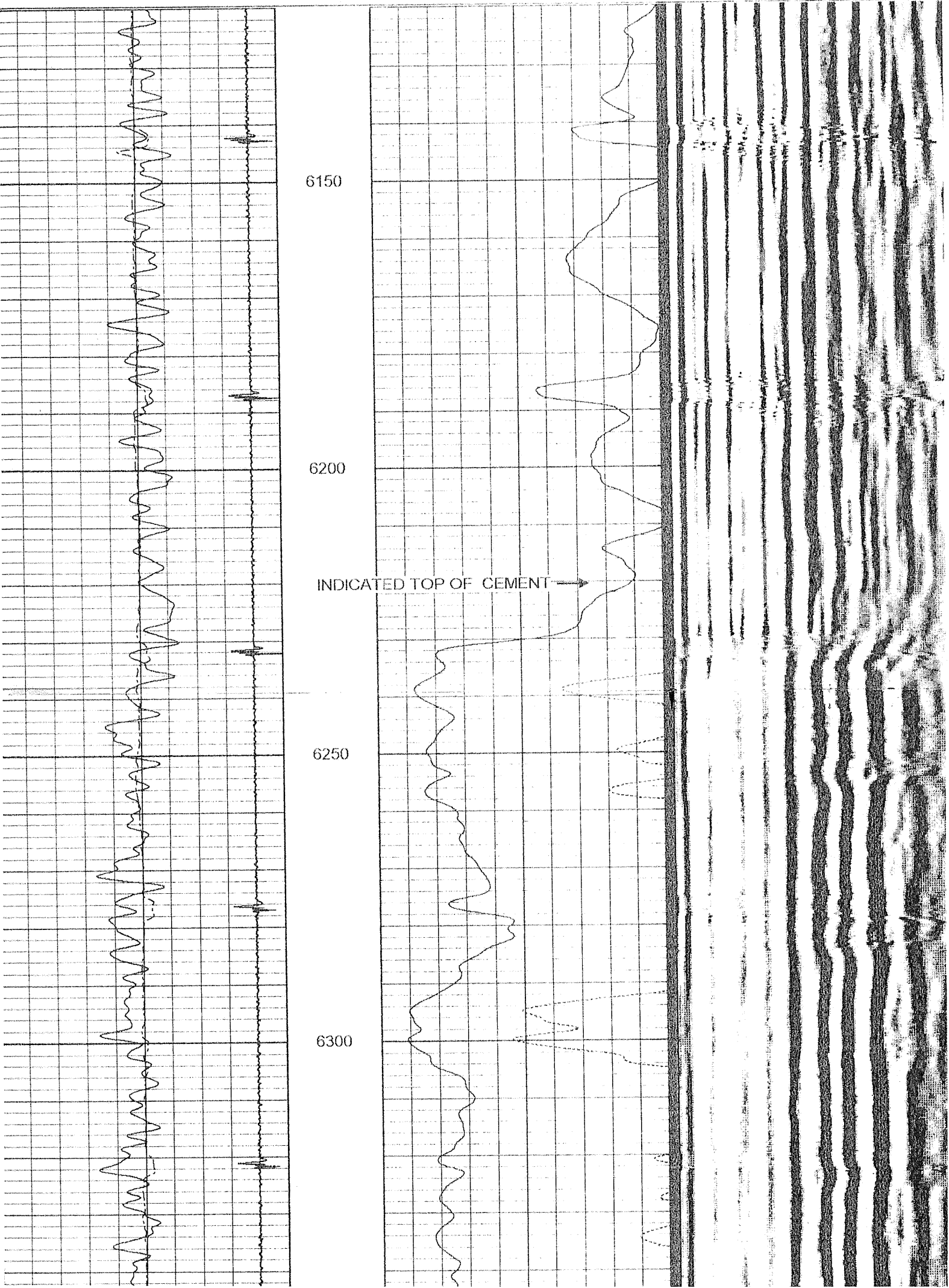
9	Collar Locator	-1
0	Gamma Ray (GAPI)	200
200	gr (GAPI)	300
200	TRAVEL TIME (usec)	400

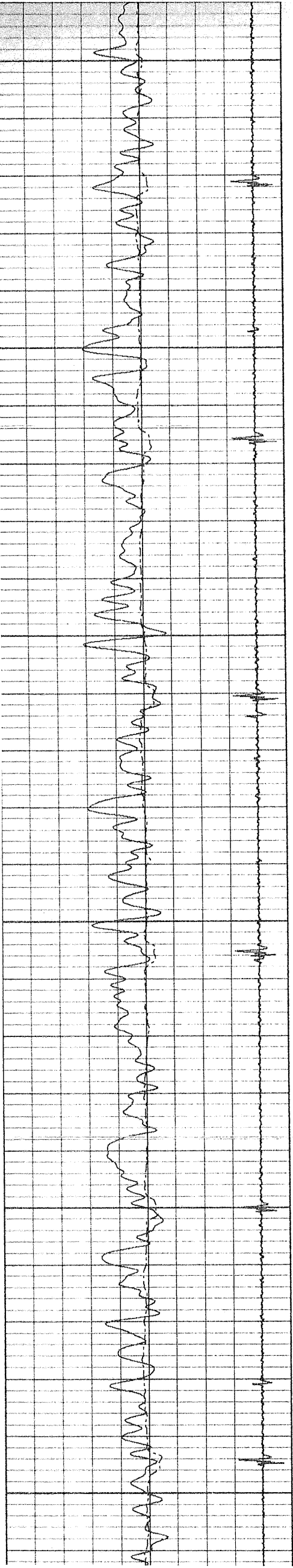
0	Amplified Amplitude (mV)	20	200	Variable Density	1200
0	Amplitude (mV)	100			



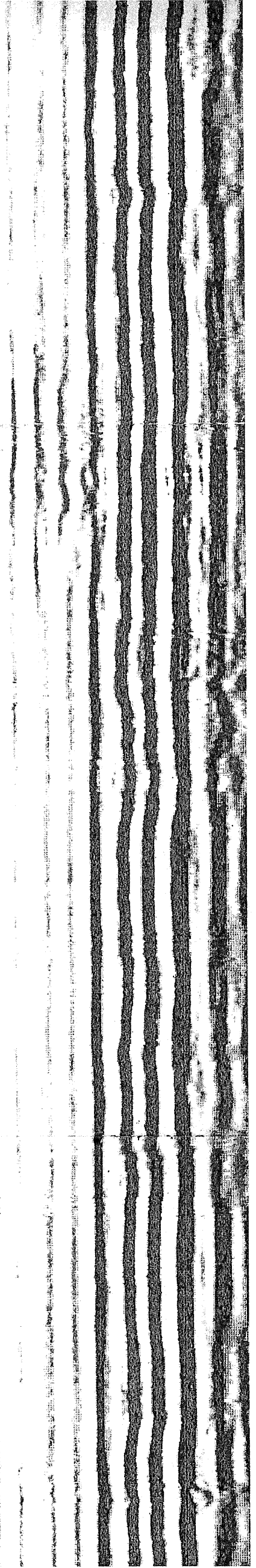
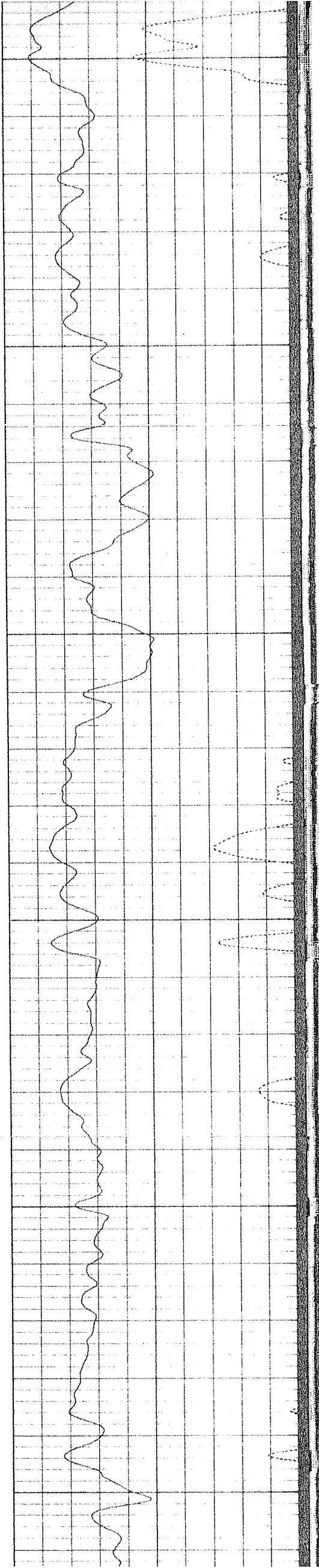
Database File: tim.db
Dataset Pathname: pass2
Presentation Format: cbl01
Dataset Creation: Fri Apr 26 07:44:35 2002 by Log 6.2_B4
Charted by: Depth in Feet scaled 1:240

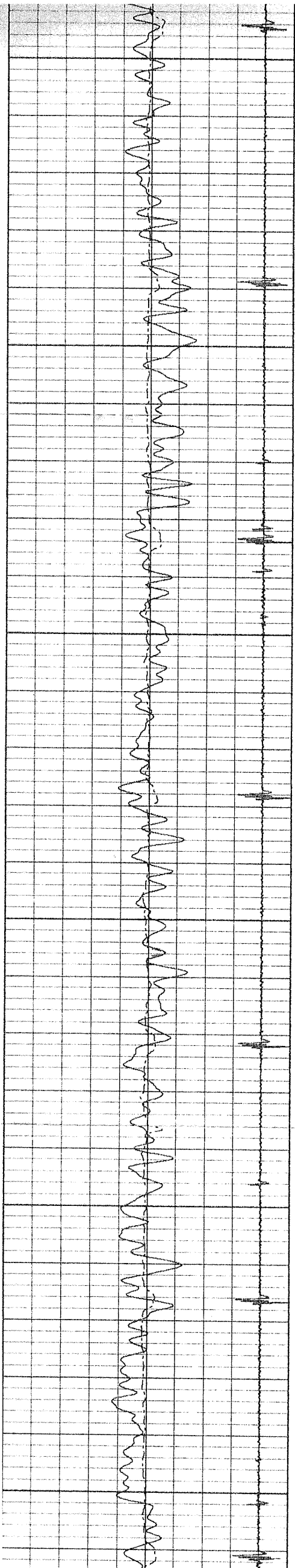
Collar Locator	-1	0	Amplified Amplitude (mV)	20	200	Variable Density	1200
Gamma Ray (GAPI)	200	0	Amplitude (mV)	100			
00	gr (GAPI)	300					
00	TRAVEL TIME (usec)	400					





6300
6350
6400
6450
6500
6550





6550

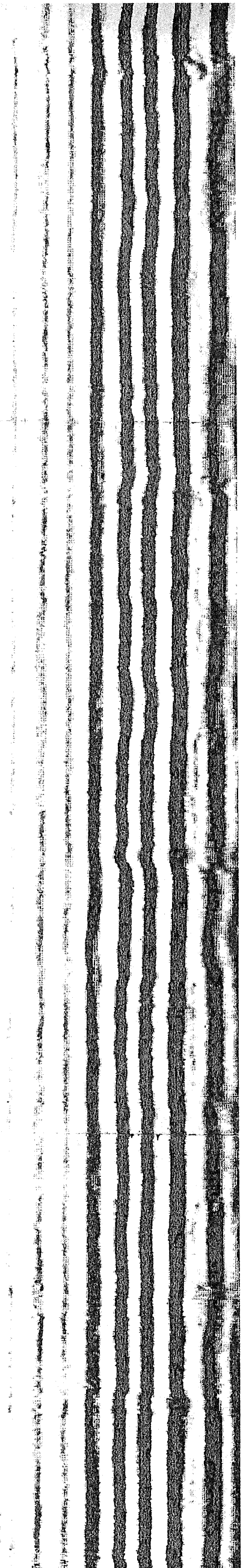
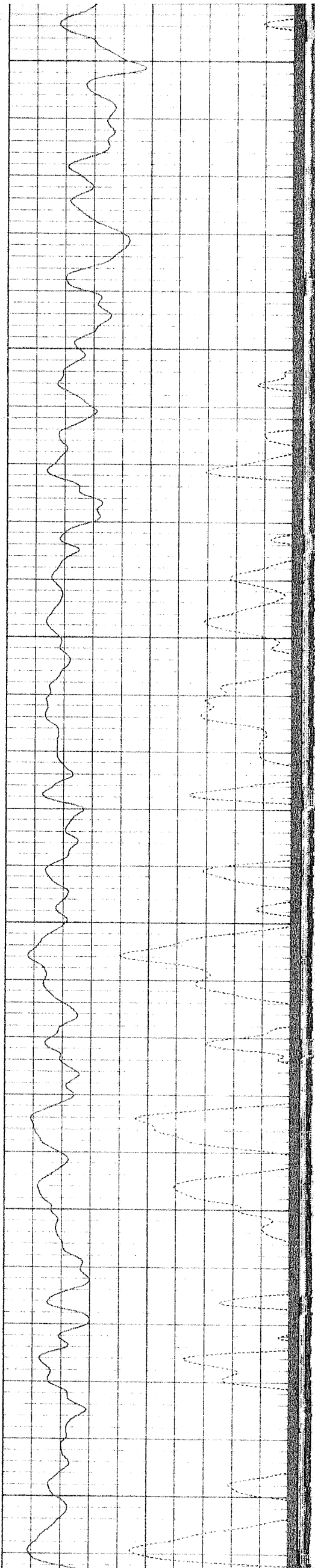
6600

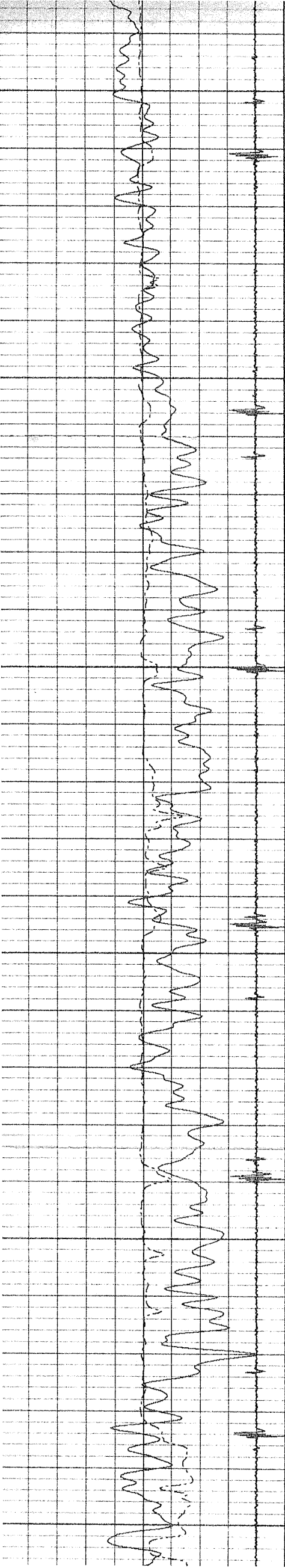
6650

6700

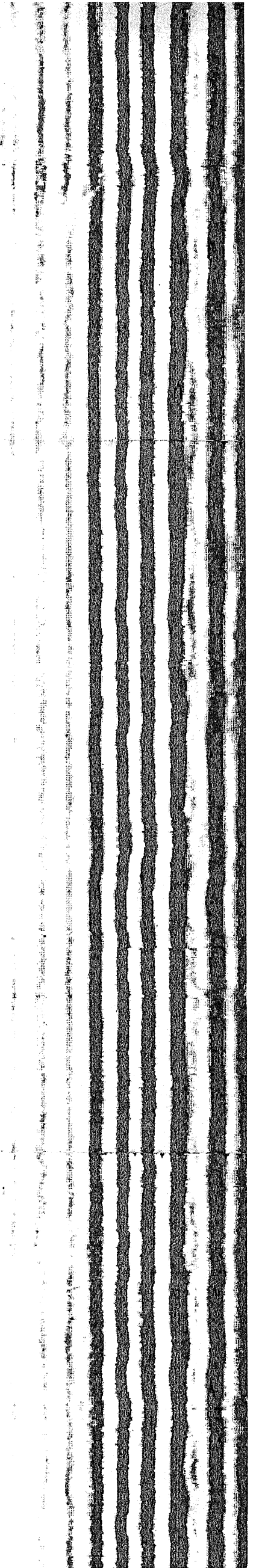
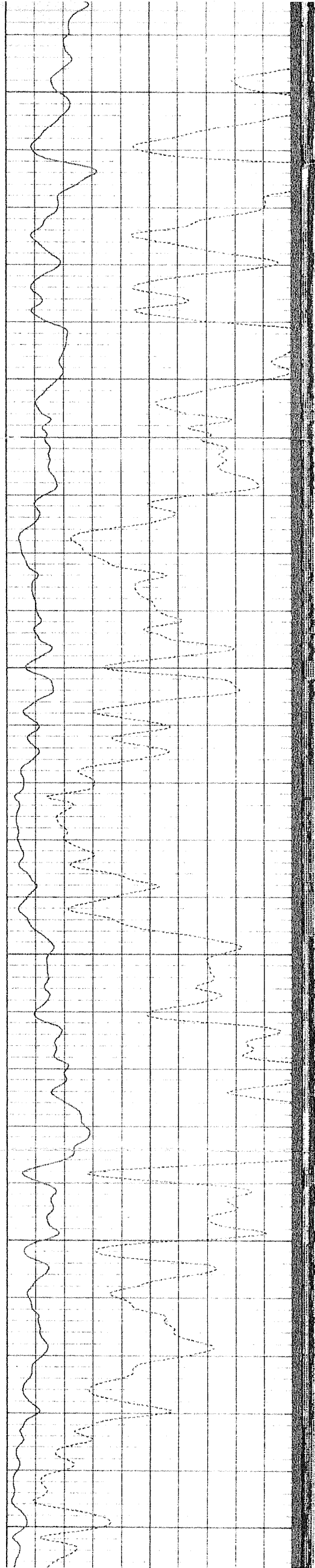
6750

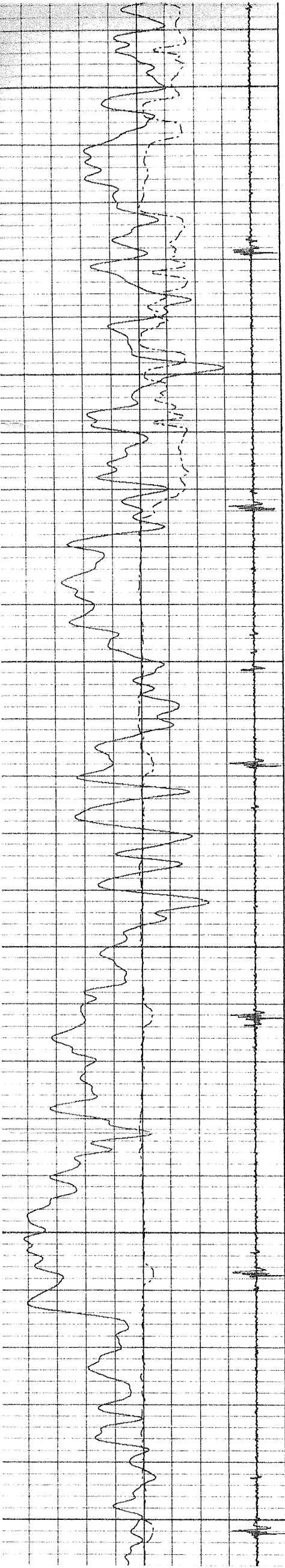
6800





6800
6850
6900
6950
7000
7050





7050

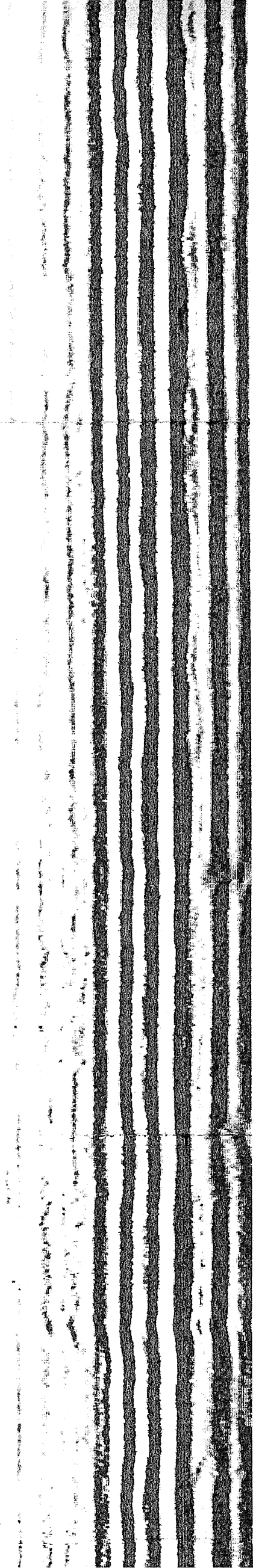
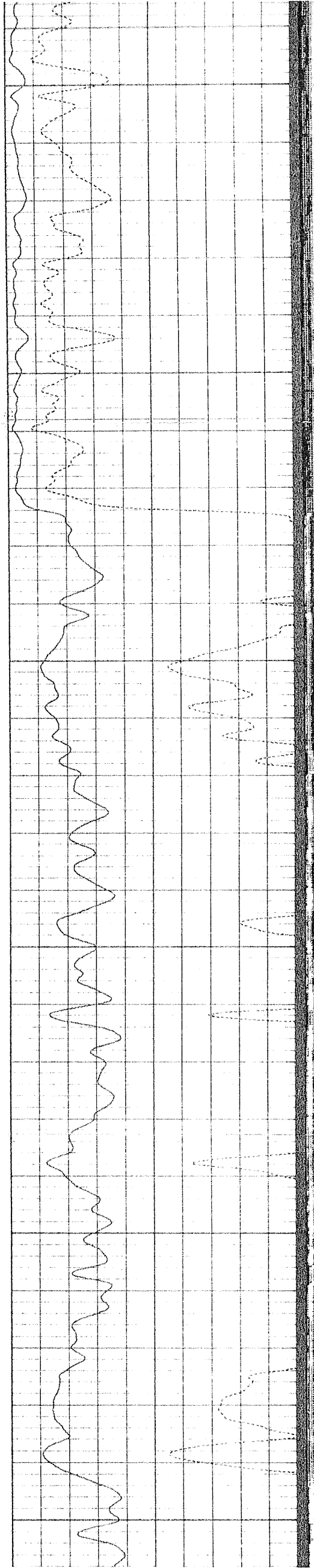
7100

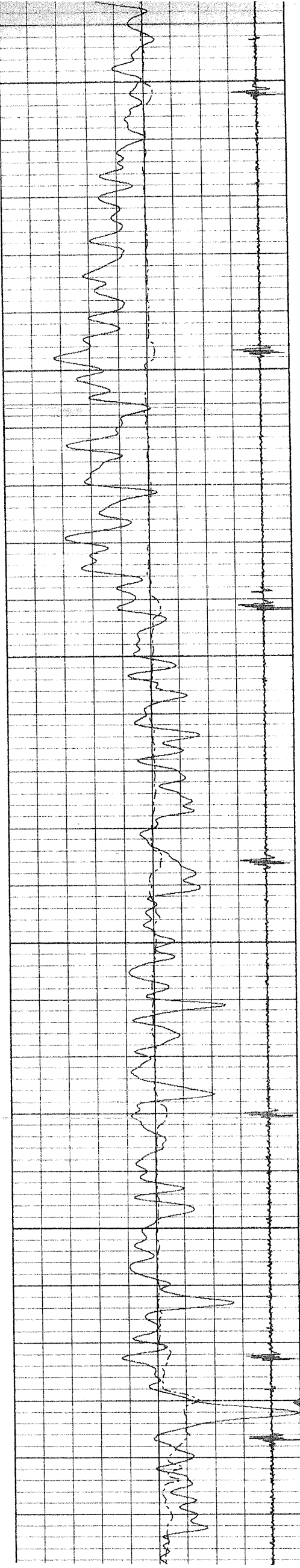
7150

7200

7250

7300





7300

7350

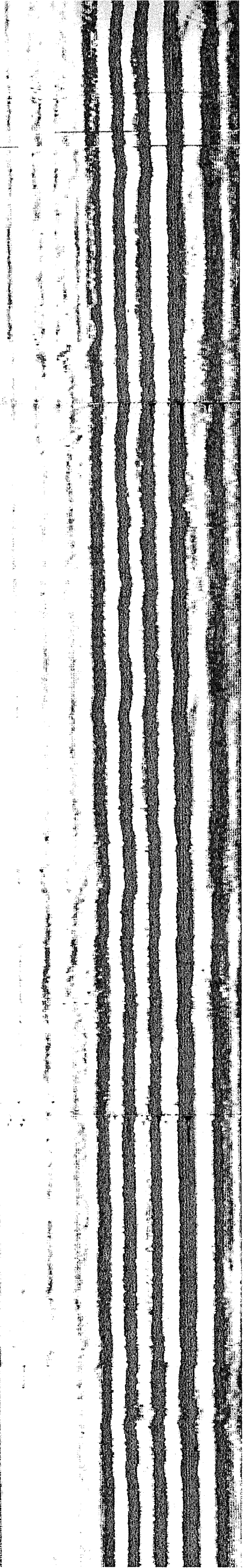
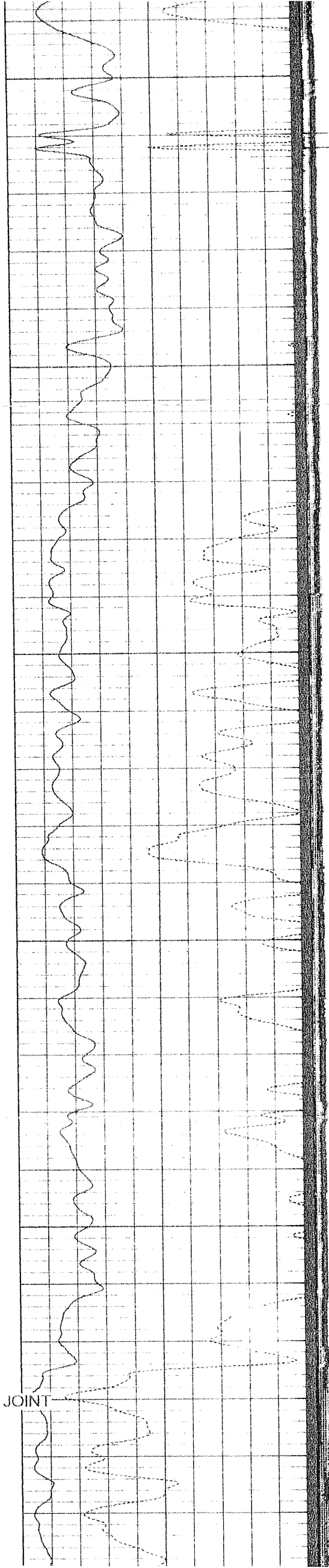
7400

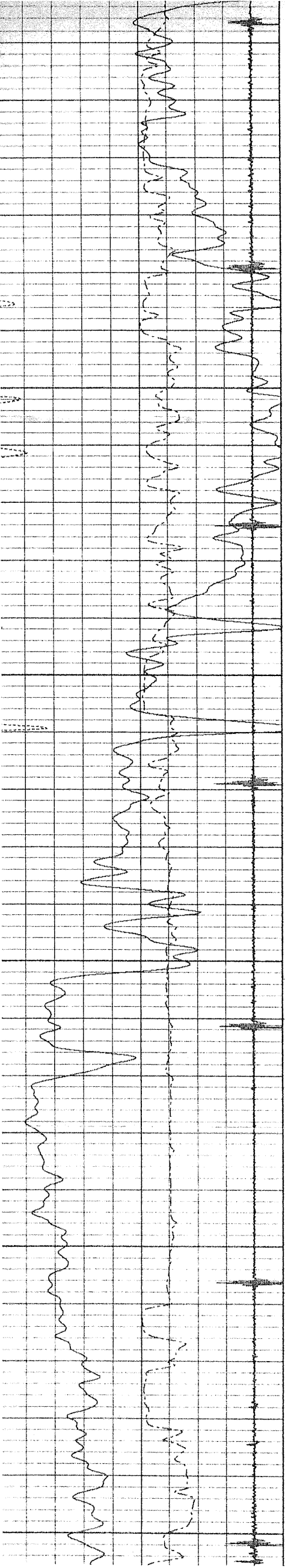
7450

7500

FLAG JOINT

7550





7550

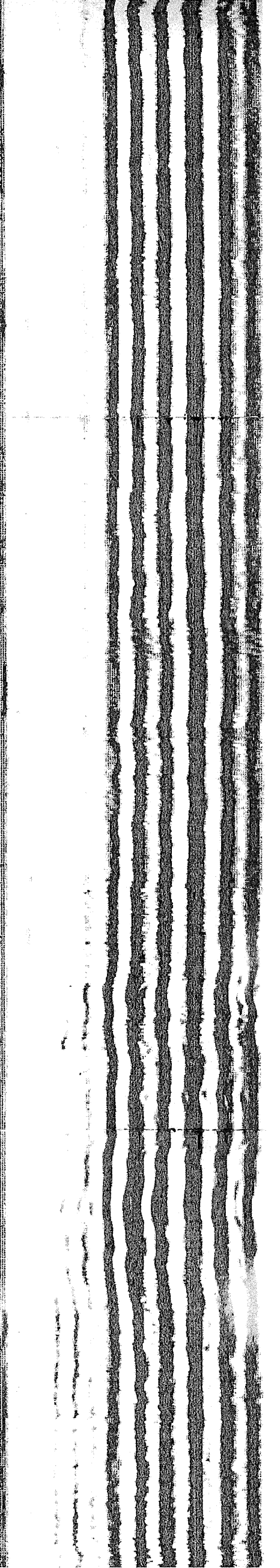
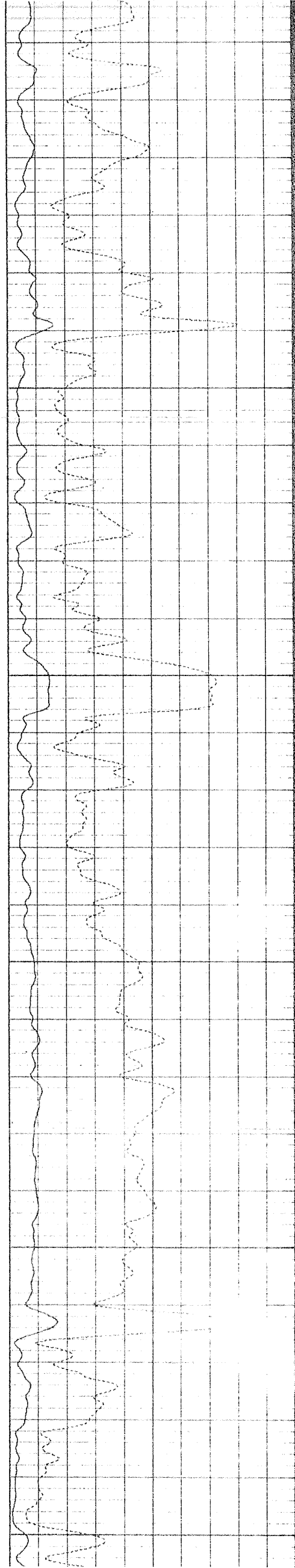
7600

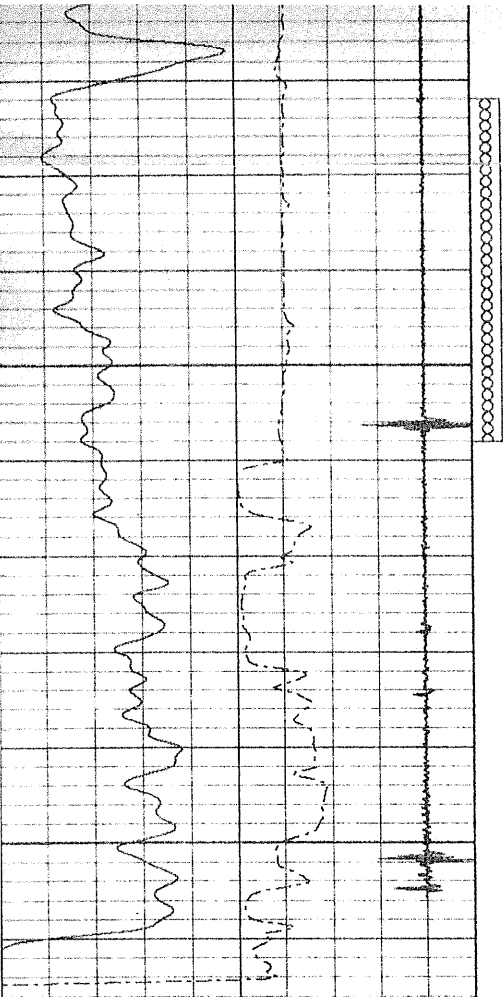
7650

7700

7750

7800



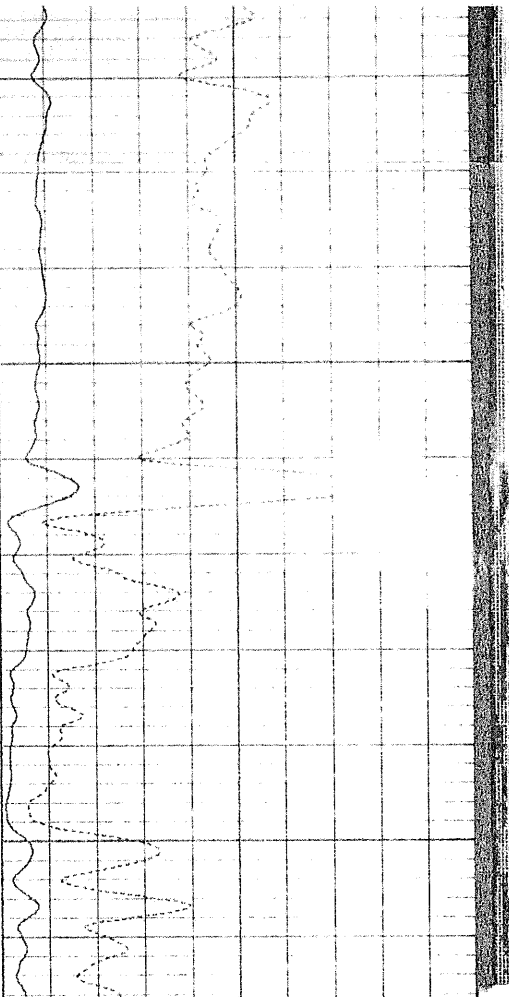


7750

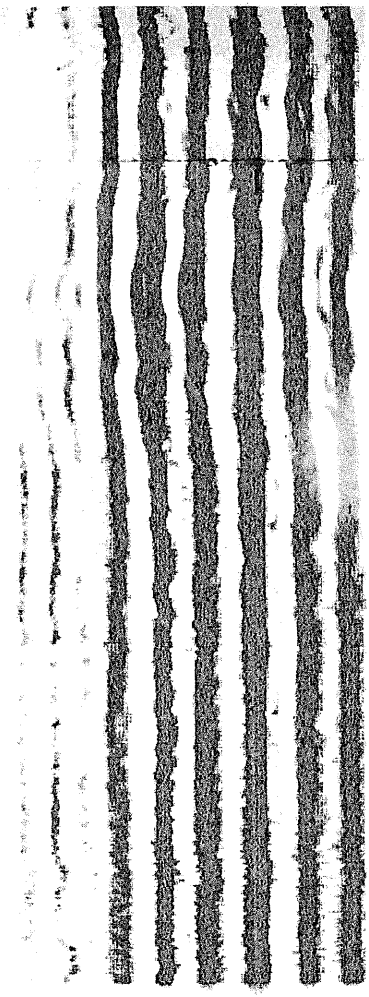
7800

LOGGERS T.D. 7823

9	Collar Locator	-1
0	Gamma Ray (GAPI)	200
200	gr (GAPI)	300
200	TRAVEL TIME (usec)	400



0	Amplified Amplitude (mV)	20	200
0	Amplitude (mV)	100	



Variable Density 1200