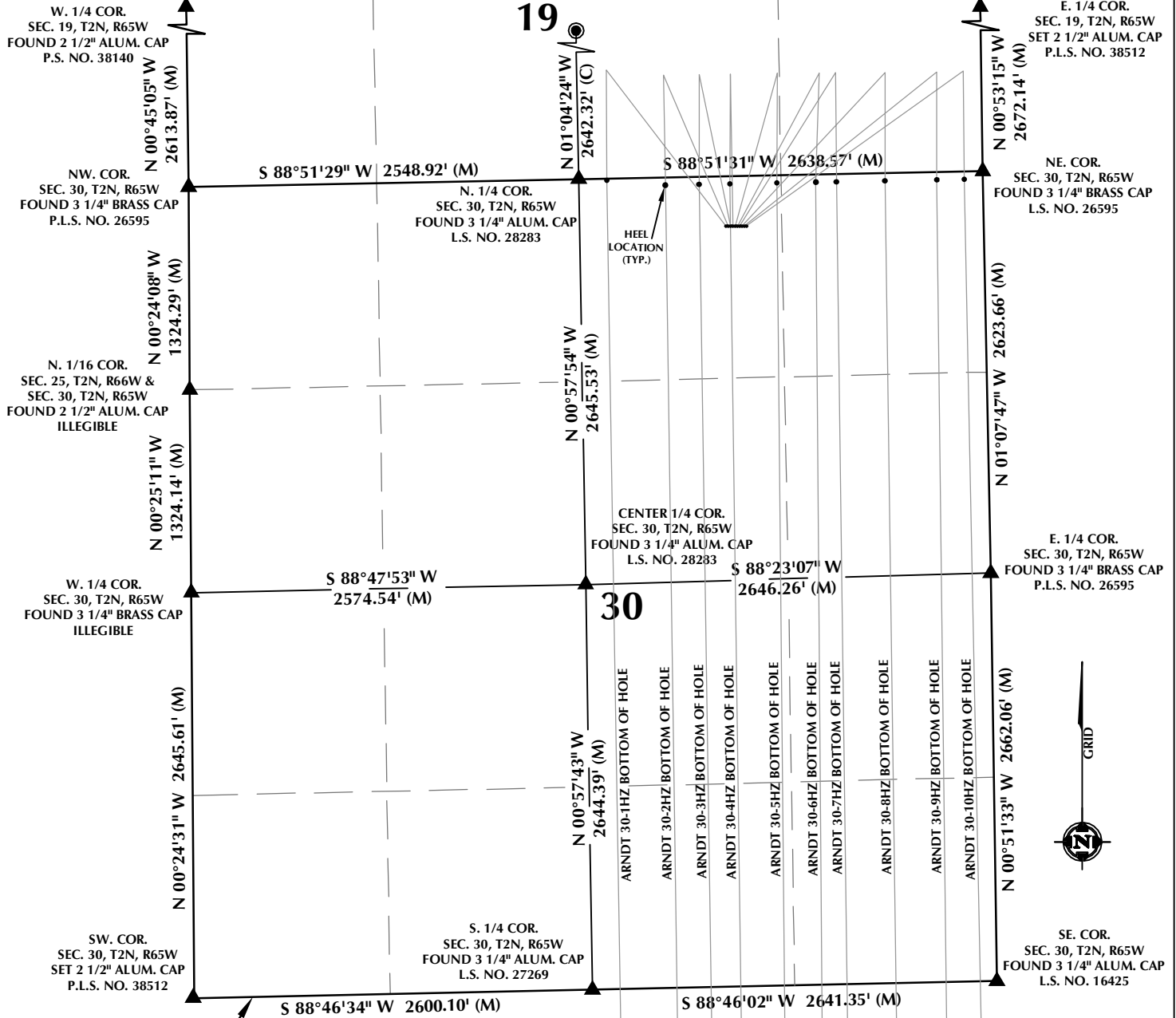


MULTI-WELL PLAN SECTIONS 19 & 30, T2N, R65W

19



WELL NOTES:

ARNDT 30-1HZ
SURFACE: 325' FNL, 1684' FEL, SEC. 30, T2N, R65W
BOTTOM HOLE: 2380' FSL, 2443' FEL, SEC. 31, T2N, R65W

ARNDT 30-2HZ
SURFACE: 325' FNL, 1669' FEL, SEC. 30, T2N, R65W
BOTTOM HOLE: 2375' FSL, 2082' FEL, SEC. 31, T2N, R65W

ARNDT 30-3HZ
SURFACE: 326' FNL, 1654' FEL, SEC. 30, T2N, R65W
BOTTOM HOLE: 2371' FSL, 1854' FEL, SEC. 31, T2N, R65W

ARNDT 30-4HZ
SURFACE: 326' FNL, 1639' FEL, SEC. 30, T2N, R65W
BOTTOM HOLE: 2368' FSL, 1662' FEL, SEC. 31, T2N, R65W

ARNDT 30-5HZ
SURFACE: 326' FNL, 1624' FEL, SEC. 30, T2N, R65W
BOTTOM HOLE: 2365' FSL, 1391' FEL, SEC. 31, T2N, R65W

ARNDT 30-6HZ
SURFACE: 326' FNL, 1609' FEL, SEC. 30, T2N, R65W
BOTTOM HOLE: 2368' FSL, 1156' FEL, SEC. 31, T2N, R65W

ARNDT 30-7HZ
SURFACE: 327' FNL, 1594' FEL, SEC. 30, T2N, R65W
BOTTOM HOLE: 2358' FSL, 971' FEL, SEC. 31, T2N, R65W

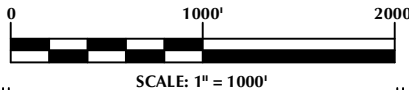
ARNDT 30-8HZ
SURFACE: 327' FNL, 1579' FEL, SEC. 30, T2N, R65W
BOTTOM HOLE: 2360' FSL, 651' FEL, SEC. 31, T2N, R65W

ARNDT 30-9HZ
SURFACE: 327' FNL, 1564' FEL, SEC. 30, T2N, R65W
BOTTOM HOLE: 2349' FSL, 329' FEL, SEC. 31, T2N, R65W

ARNDT 30-10HZ
SURFACE: 328' FNL, 1549' FEL, SEC. 30, T2N, R65W
BOTTOM HOLE: 2345' FSL, 82' FEL, SEC. 31, T2N, R65W

NOTES:

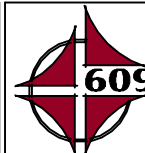
- ▲ INDICATES SECTION CORNER.
- INDICATES CALCULATED CORNER.
- BASIS OF BEARING DERIVED FROM COLORADO COORDINATE SYSTEM OF 1983 NORTH ZONE.
- ALL MEASURED DISTANCES ARE GRID. COMBINED SCALE FACTOR: .99972279 CALCULATED FROM THE NW. CORNER OF SECTION 30, T2N, R65W. WELL FOOTAGES ARE MEASURED AT RIGHT ANGLES TO THE SECTION LINES.



WELL PAD - ARNDT 27-30HZ

MULTI-WELL PLAN
ARNDT 30-1HZ, ARNDT 30-2HZ,
ARNDT 30-3HZ, ARNDT 30-4HZ,
ARNDT 30-5HZ, ARNDT 30-6HZ,
ARNDT 30-7HZ, ARNDT 30-8HZ
ARNDT 30-9HZ & ARNDT 30-10HZ
LOCATED IN SECTIONS 19, 30 & 31
T2N, R65W, 6TH P.M.
WELD COUNTY, COLORADO

**Kerr-McGee Oil &
Gas Onshore L.P.**
1099 18th Street
Denver, Colorado 80202



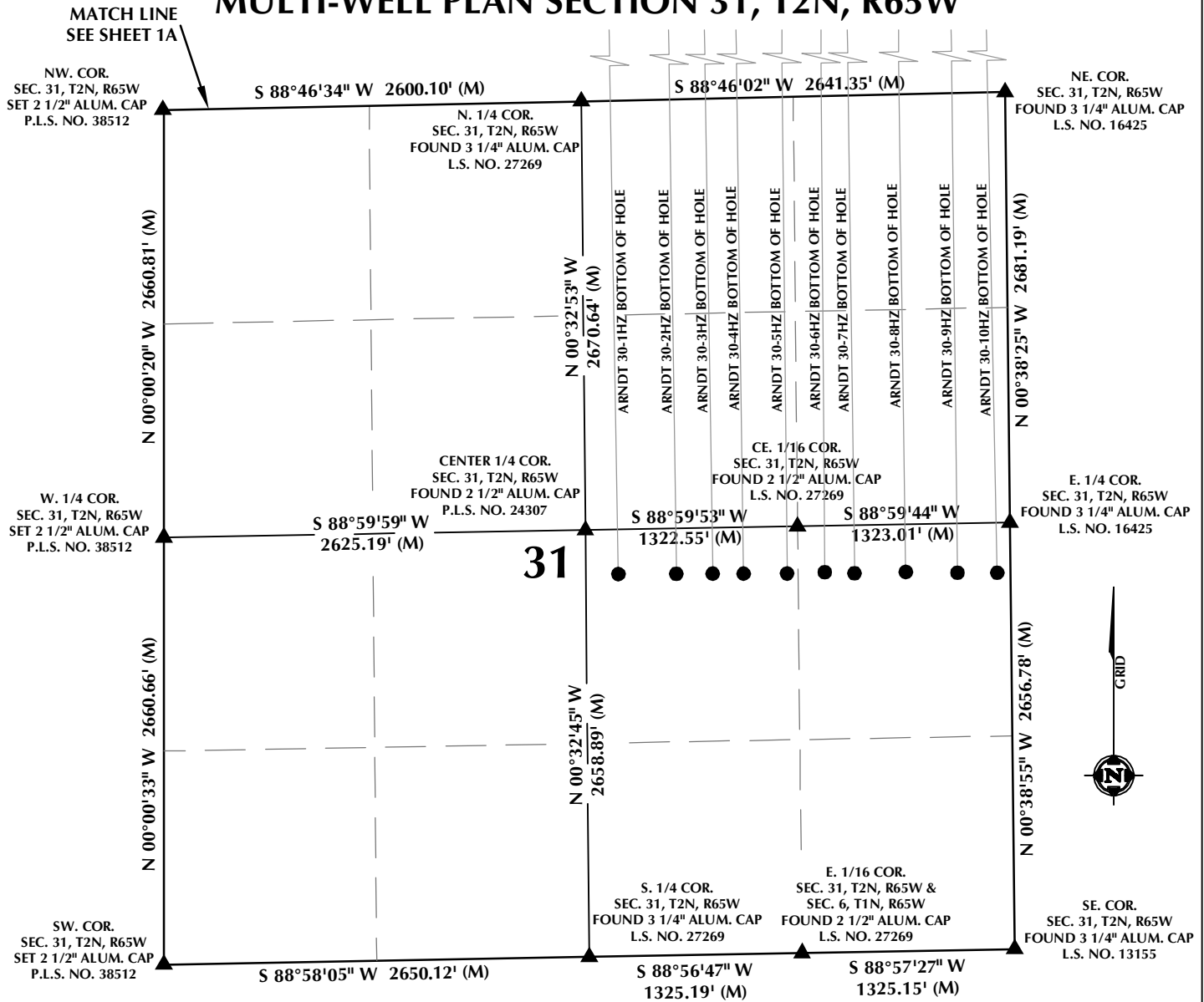
CONSULTING, LLC

SHERIDAN OFFICE
1095 Saberton Avenue
Sheridan, Wyoming 82801
Phone 307-674-0609

LOVELAND OFFICE
1635 Foxtrail Drive, Suite 204
Loveland, Colorado 80538
Phone 970-776-4331

DRAFTED BY:	LMO	CHECKED BY:	RKF	SHEET NO:
DATE DRAFTED:	5/10/18	DATE SURVEYED:	4/10/18	1A
REVISED:		FILE NAME:	17-215	1A OF 1

MULTI-WELL PLAN SECTION 31, T2N, R65W



WELL NOTES:

ARNDT 30-1HZ
SURFACE: 325' FNL, 1684' FEL, SEC. 30, T2N, R65W
BOTTOM HOLE: 2380' FSL, 2443' FEL, SEC. 31, T2N, R65W

ARNDT 30-2HZ
SURFACE: 325' FNL, 1669' FEL, SEC. 30, T2N, R65W
BOTTOM HOLE: 2375' FSL, 2082' FEL, SEC. 31, T2N, R65W

ARNDT 30-3HZ
SURFACE: 326' FNL, 1654' FEL, SEC. 30, T2N, R65W
BOTTOM HOLE: 2371' FSL, 1854' FEL, SEC. 31, T2N, R65W

ARNDT 30-4HZ
SURFACE: 326' FNL, 1639' FEL, SEC. 30, T2N, R65W
BOTTOM HOLE: 2368' FSL, 1662' FEL, SEC. 31, T2N, R65W

ARNDT 30-5HZ
SURFACE: 326' FNL, 1624' FEL, SEC. 30, T2N, R65W
BOTTOM HOLE: 2365' FSL, 1391' FEL, SEC. 31, T2N, R65W

ARNDT 30-6HZ
SURFACE: 326' FNL, 1609' FEL, SEC. 30, T2N, R65W
BOTTOM HOLE: 2368' FSL, 1156' FEL, SEC. 31, T2N, R65W

ARNDT 30-7HZ
SURFACE: 327' FNL, 1594' FEL, SEC. 30, T2N, R65W
BOTTOM HOLE: 2358' FSL, 971' FEL, SEC. 31, T2N, R65W

ARNDT 30-8HZ
SURFACE: 327' FNL, 1579' FEL, SEC. 30, T2N, R65W
BOTTOM HOLE: 2360' FSL, 651' FEL, SEC. 31, T2N, R65W

ARNDT 30-9HZ
SURFACE: 327' FNL, 1564' FEL, SEC. 30, T2N, R65W
BOTTOM HOLE: 2349' FSL, 329' FEL, SEC. 31, T2N, R65W

ARNDT 30-10HZ
SURFACE: 328' FNL, 1549' FEL, SEC. 30, T2N, R65W
BOTTOM HOLE: 2345' FSL, 82' FEL, SEC. 31, T2N, R65W

NOTES:

- ▲ INDICATES SECTION CORNER.
- INDICATES CALCULATED CORNER.
- BASIS OF BEARING DERIVED FROM COLORADO COORDINATE SYSTEM OF 1983 NORTH ZONE.
- ALL MEASURED DISTANCES ARE GRID.
- COMBINED SCALE FACTOR: .99972279 CALCULATED FROM THE NW. CORNER OF SECTION 30, T2N, R65W. WELL FOOTAGES ARE MEASURED AT RIGHT ANGLES TO THE SECTION LINES.

WELL PAD - ARNDT 27-30HZ

MULTI-WELL PLAN
 ARNDT 30-1HZ, ARNDT 30-2HZ,
 ARNDT 30-3HZ, ARNDT 30-4HZ,
 ARNDT 30-5HZ, ARNDT 30-6HZ,
 ARNDT 30-7HZ, ARNDT 30-8HZ,
 ARNDT 30-9HZ & ARNDT 30-10HZ
 LOCATED IN SECTIONS 19, 30 & 31
 T2N, R65W, 6TH P.M.
 WELD COUNTY, COLORADO

**Kerr-McGee Oil &
Gas Onshore L.P.**
 1099 18th Street
 Denver, Colorado 80202



CONSULTING, LLC

SHERIDAN OFFICE
 1095 Saberton Avenue
 Sheridan, Wyoming 82801
 Phone 307-674-0609

LOVELAND OFFICE
 1635 Foxtrail Drive, Suite 204
 Loveland, Colorado 80538
 Phone 970-776-4331

DRAFTED BY:	LMO	CHECKED BY:	RKF	SHEET NO:
DATE DRAFTED:	5/10/18	DATE SURVEYED:	4/10/18	1B
REVISED:		FILE NAME:	17-215	1B OF 1