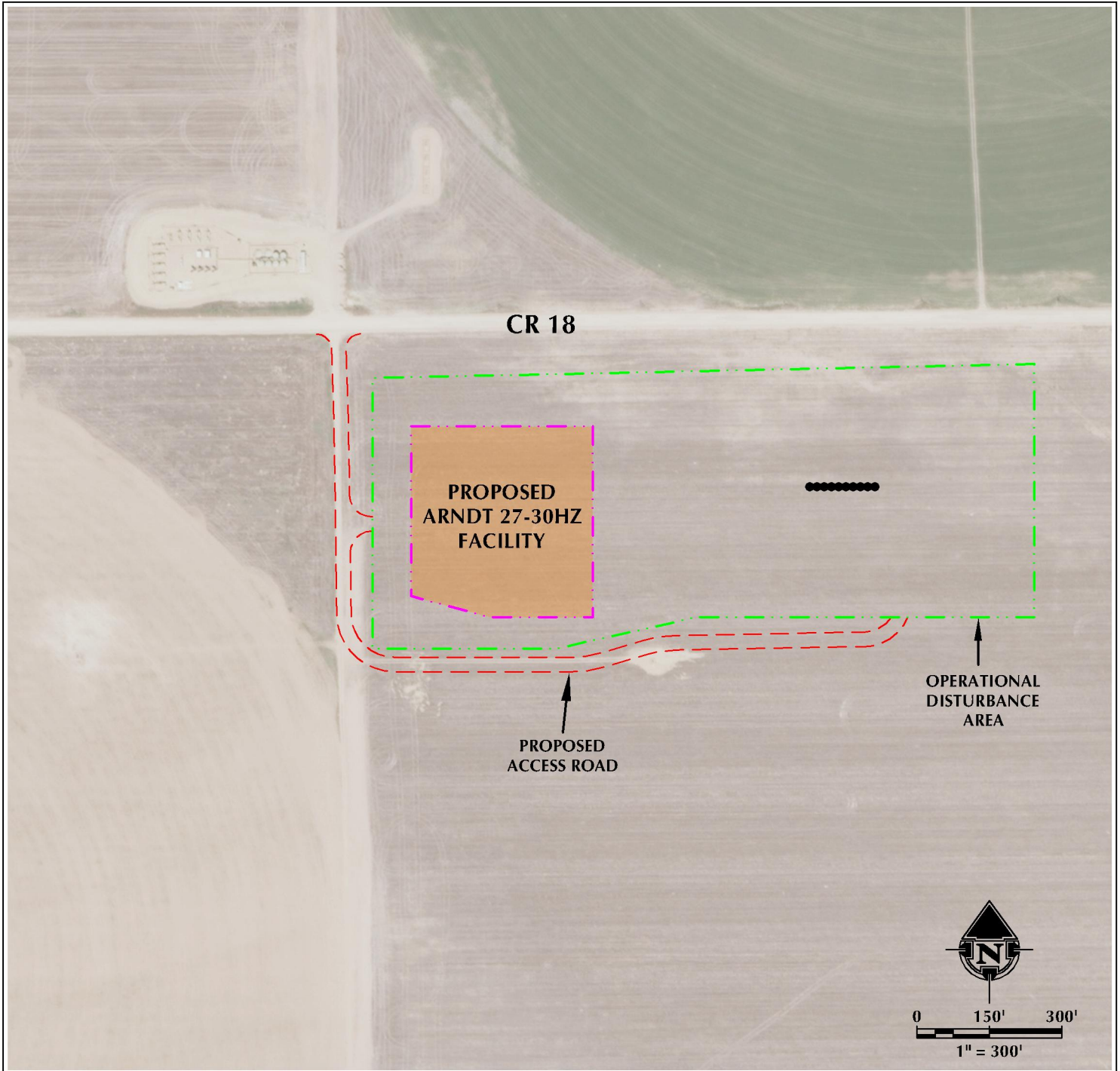


ARNDT 27-30HZ ACCESS MAP

NW1/4 NE1/4 SECTION 30, TOWNSHIP 2 NORTH, RANGE 65 WEST, 6TH P.M.



LEGEND

- PROPOSED WELL
- ACCESS
- PROPOSED FACILITY
- DISTURBANCE BOUNDARY



609 CONSULTING, LLC
LOVELAND OFFICE
1635 Fossil Drive, Suite 204
Loveland, Colorado 80538
Phone: 970-776-4331

SHERIDAN OFFICE
1095 Saberton Avenue
Sheridan, Wyoming 82801
Phone: 307-674-0609

DATE SURVEYED: 4/10/18
DATE: 5/15/18
DRAFTER: DD
REVISED:

DATA SOURCES:
- AERIAL COURTESY OF ESRI, INC.

PREPARED FOR:
Kerr-McGee Oil & Gas Onshore L.P.