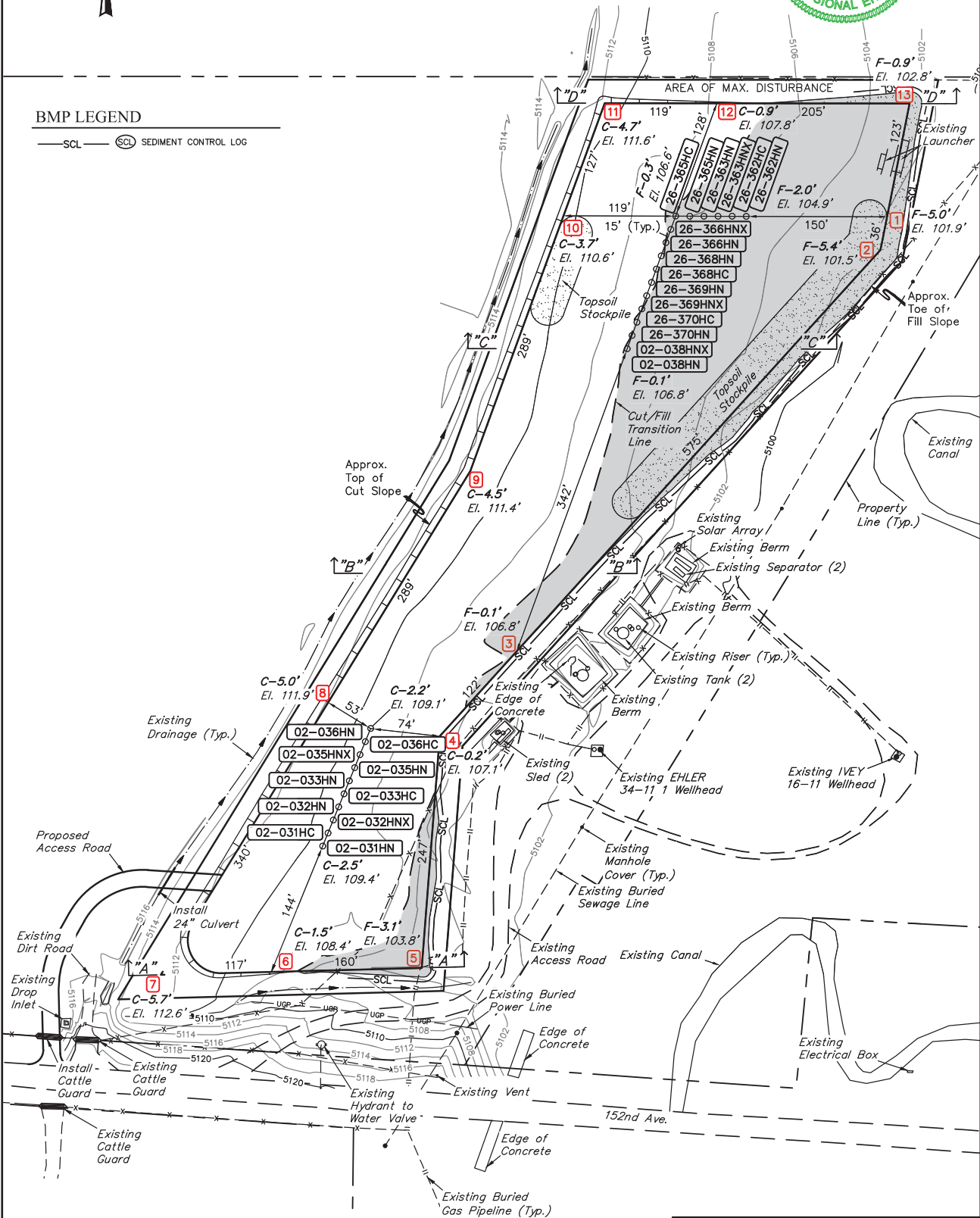


### BMP LEGEND

— SCL — (SCL) SEDIMENT CONTROL LOG



REV: 2 06-28-18 K.B. (UPDATE GROUND CONTOURS)

FINISHED GRADE ELEVATION = 5106.9'

NOTE: Earthwork calculations require a fill @ some location stakes for balance. All fill is to be compacted to a minimum of 95% of the maximum dry density obtained by AASHTO method t-99.

#### NOTES:

- Round corners at 35' radius or as needed.
- Construct diversion ditches as needed.
- Contours shown at 2' intervals.
- Cut slopes 1 1/2:1 (Typ.).
- Fill slopes 3:1 (Typ.).



**UELS, LLC**  
Corporate Office \* 85 South 200 East  
Vernal, UT 84078 \* (435) 789-1017

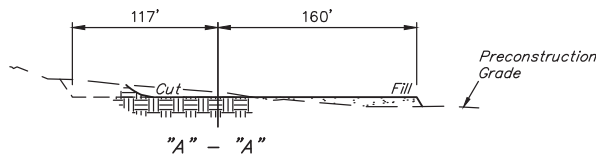
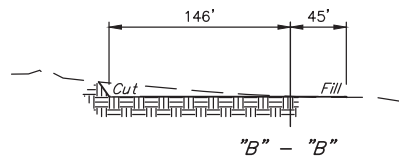
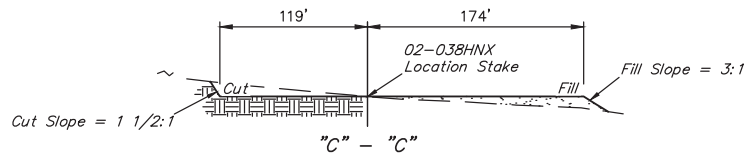
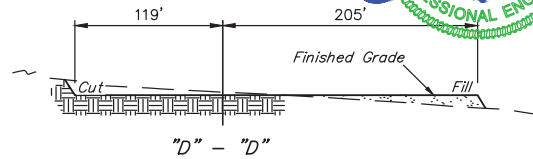
### GREAT WESTERN OPERATING COMPANY

IVEY LC PAD  
SW 1/4 SE 1/4, SECTION 11, T1S, R68W, 6th P.M.  
ADAMS COUNTY, COLORADO

SURVEYED BY	RYAN WILLIAMS, J.C.	06-08-18	SCALE
DRAWN BY	K.B.	06-22-18	1" = 100'

**CONSTRUCTION LAYOUT** **FIGURE #1**

1" = 40'  
X-Section  
Scale  
1" = 100'



APPROXIMATE EARTHWORK QUANTITIES	
(6") TOPSOIL STRIPPING	4,360 Cu. Yds.
REMAINING LOCATION	8,610 Cu. Yds.
<b>TOTAL CUT</b>	<b>12,970 Cu. Yds.</b>
<b>FILL</b>	<b>8,610 Cu. Yds.</b>
EXCESS MATERIAL	4,360 Cu. Yds.
TOPSOIL	4,360 Cu. Yds.
<b>EXCESS UNBALANCE</b> (After Interim Rehabilitation)	<b>0 Cu. Yds.</b>

APPROXIMATE SURFACE DISTURBANCE AREAS		
	DISTANCE	ACRES
WELL SITE DISTURBANCE	NA	±6.810
30' WIDE ACCESS ROAD R-O-W DISTURBANCE	±329'	±0.227
<b>TOTAL SURFACE USE AREA</b>		<b>±7.037</b>

REV: 1 06-26-18 K.B. (PRODUCTION EQUIPMENT CHANGE)

#### NOTES:

- Fill quantity includes 5% for compaction.
- Calculations based on 6" of topsoil stripping.
- Cut slopes 1 1/2:1 (Typ.).
- Fill slopes 3:1 (Typ.).

#### GREAT WESTERN OPERATING COMPANY

IVEY LC PAD  
SW 1/4 SE 1/4, SECTION 11, T1S, R68W, 6th P.M.  
ADAMS COUNTY, COLORADO



UELS, LLC  
Corporate Office \* 85 South 200 East  
Vernal, UT 84078 \* (435) 789-1017

SURVEYED BY	RYAN WILLIAMS, J.C.	06-08-18	SCALE
DRAWN BY	K.B.	06-22-18	AS SHOWN

CONSTRUCTION LAYOUT CROSS SECTIONS **FIGURE #2**