

T1S

INTERSECTION OF E-470  
& INTERSTATE 25

E-470

PROPOSED LOCATION:  
IVEY LC PAD

YORK ST.

152nd AVE.

INTERSTATE 25

R  
68  
W

REV: 1 06-26-18 K.B. (ACCESS ROUTE CHANGE)

NOTE: PARCEL DATA SHOWN HAS BEEN OBTAINED FROM VARIOUS SOURCES AND SHOULD BE USED FOR MAPPING, GRAPHIC AND PLANNING PURPOSES ONLY. NO WARRANTY IS MADE BY UINTAH ENGINEERING AND LAND SURVEYING (UELS) FOR ACCURACY OF THE PARCEL DATA.

**LEGEND:**

TRUCK ROUTE



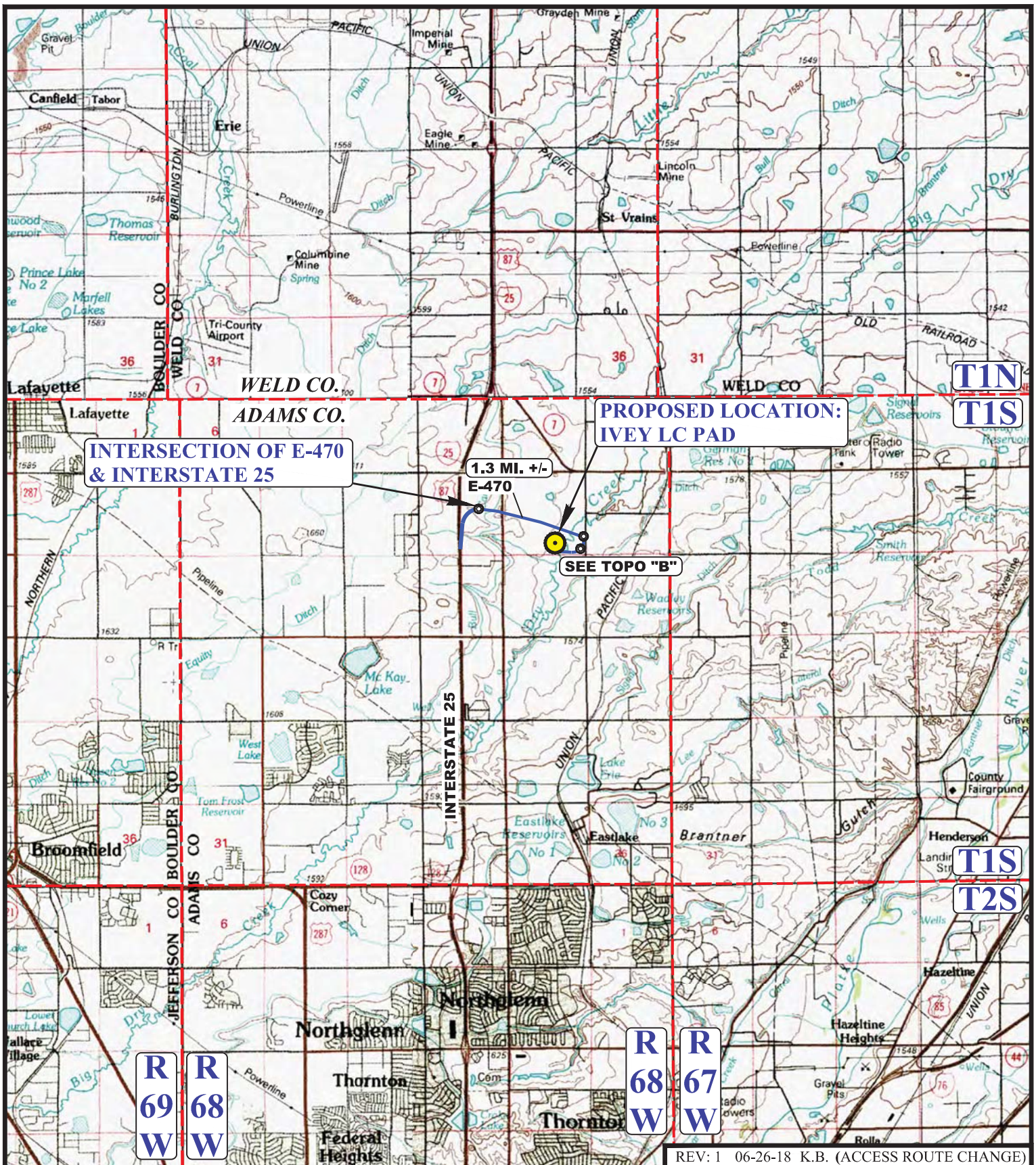
**GREAT WESTERN OPERATING COMPANY**

**IVEY LC PAD**  
SW 1/4 SE 1/4, SECTION 11, T1S, R68W, 6th P.M.  
ADAMS COUNTY, COLORADO

SURVEYED BY	R.W., J.C.	06-08-18	SCALE
DRAWN BY	J.L.G.	06-21-18	1 : 24,000
TRUCK ROUTE MAP			



**UELS, LLC**  
Corporate Office \* 85 South 200 East  
Vernal, UT 84078 \* (435) 789-1017



# **LEGEND:**

 **PROPOSED LOCATION**



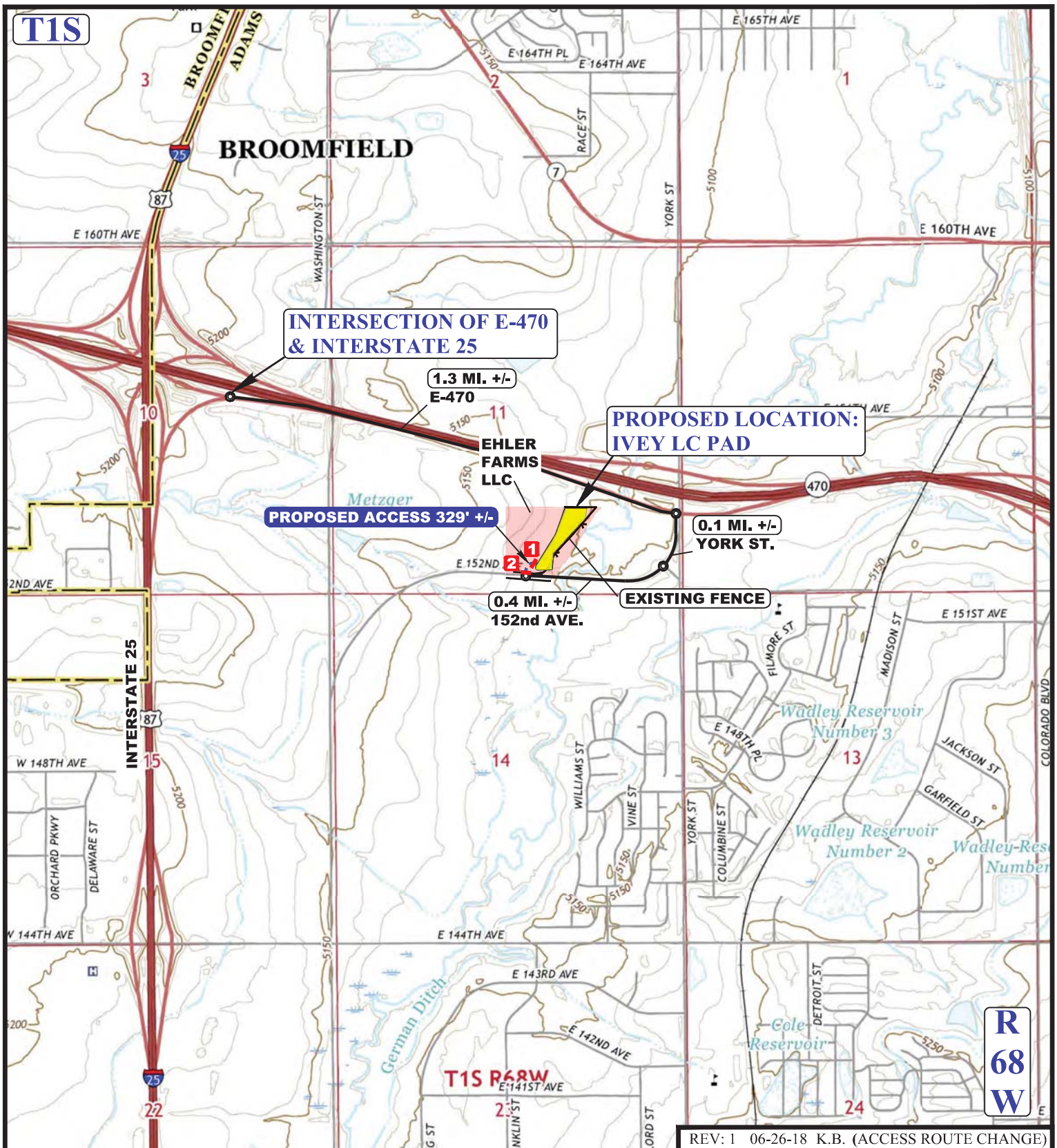
## **GREAT WESTERN OPERATING COMPANY**

**IVEY LC PAD**  
SW 1/4 SE 1/4, SECTION 11, T1S, R68W, 6th P.M.  
ADAMS COUNTY, COLORADO

SURVEYED BY	R.W., J.C.	06-08-18	SCALE
DRAWN BY	J.L.G.	06-21-18	1 : 100,000
<b>ACCESS ROAD MAP</b>			<b>TOPO A</b>



**UELS, LLC**  
Corporate Office \* 85 South 200 East  
Vernal, UT 84078 \* (435) 789-1017



NOTE: PARCEL DATA SHOWN HAS BEEN OBTAINED FROM VARIOUS SOURCES AND SHOULD BE USED FOR MAPPING, GRAPHIC AND PLANNING PURPOSES ONLY. NO WARRANTY IS MADE BY UINTAH ENGINEERING AND LAND SURVEYING (UELS) FOR ACCURACY OF THE PARCEL DATA.

#### LEGEND:

- EXISTING ROAD
- - - PROPOSED ROAD
- \* \* \* EXISTING FENCE
- 1 INSTALL 24" CULVERT
- 2 INSTALL CATTLE GUARD



#### GREAT WESTERN OPERATING COMPANY

**IVEY LC PAD**  
SW 1/4 SE 1/4, SECTION 11, T1S, R68W, 6th P.M.  
ADAMS COUNTY, COLORADO

SURVEYED BY	R.W., J.C.	06-08-18	SCALE
DRAWN BY	J.L.G.	06-21-18	1 : 24,000
<b>ACCESS ROAD MAP</b>			<b>TOPO B</b>



**UELS, LLC**  
Corporate Office \* 85 South 200 East  
Vernal, UT 84078 \* (435) 789-1017