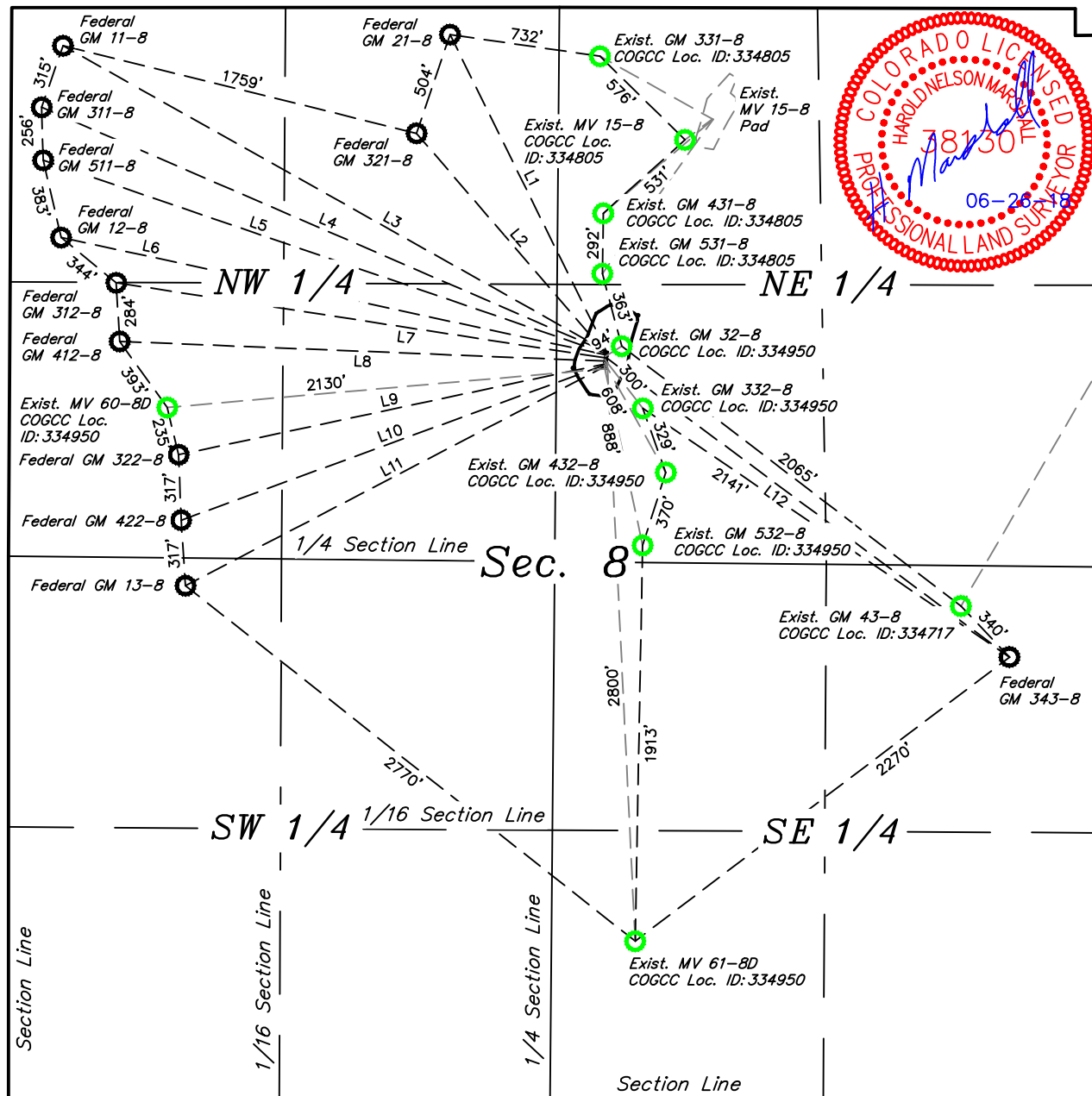


N



LINE TABLE		
LINE	DIRECTION	LENGTH
L1	N26°16'56"W	1718.61'
L2	N40°42'13"W	1413.33'
L3	N60°38'52"W	3018.71'
L4	N66°33'44"W	2969.39'

LINE TABLE		
LINE	DIRECTION	LENGTH
L5	N71°03'10"W	2871.83'
L6	N77°49'46"W	2689.19'
L7	N81°15'32"W	2388.89'
L8	N87°40'17"W	2354.28'

LINE TABLE		
LINE	DIRECTION	LENGTH
L9	S77°58'15"W	2102.26'
L10	S69°51'20"W	2187.80'
L11	S62°24'15"W	2292.96'
L12	S53°23'10"E	2422.15'

REV: 2 06-25-18 M.D. (ADD EXISTING WELL)

LEGEND:

- = TARGET BOTTOM HOLE.
 ● = EXISTING BOTTOM HOLE.

TEP Rocky Mountain LLC

MV 60-8D PAD
 SW 1/4 NE 1/4, SECTION 8, T7S, R96W, 6th P.M.
 GARFIELD COUNTY, COLORADO



UELS, LLC
 Corporate Office * 85 South 200 East
 Vernal, UT 84078 * (435) 789-1017

SURVEYED BY	JOEL LEFEVRE	06-05-18	SCALE
DRAWN BY	T.L.L.	06-11-18	1" = 800'
MULTI-WELL PLAN			PLAT #6B