

T7S, R96W, 6th P.M.

LINE TABLE		
LINE	DIRECTION	LENGTH
L1	N00°02'55"E	129.07'
L2	N89°51'16"W	115.68'

C.C.
1920 Brass Cap,
0.6' High, Stones
Lat: 39.459024°
Long: 108.122346°

N 1/4 Cor. Sec. 9
1920 Brass Cap,
#17492, 1.5' High,
Pile of Stones
Lat: 39.458703°
Long: 108.115029°

W 1/4 Cor. Sec. 5
1920 Brass Cap,
1.0' High
Lat: 39.466308°
Long: 108.140608°

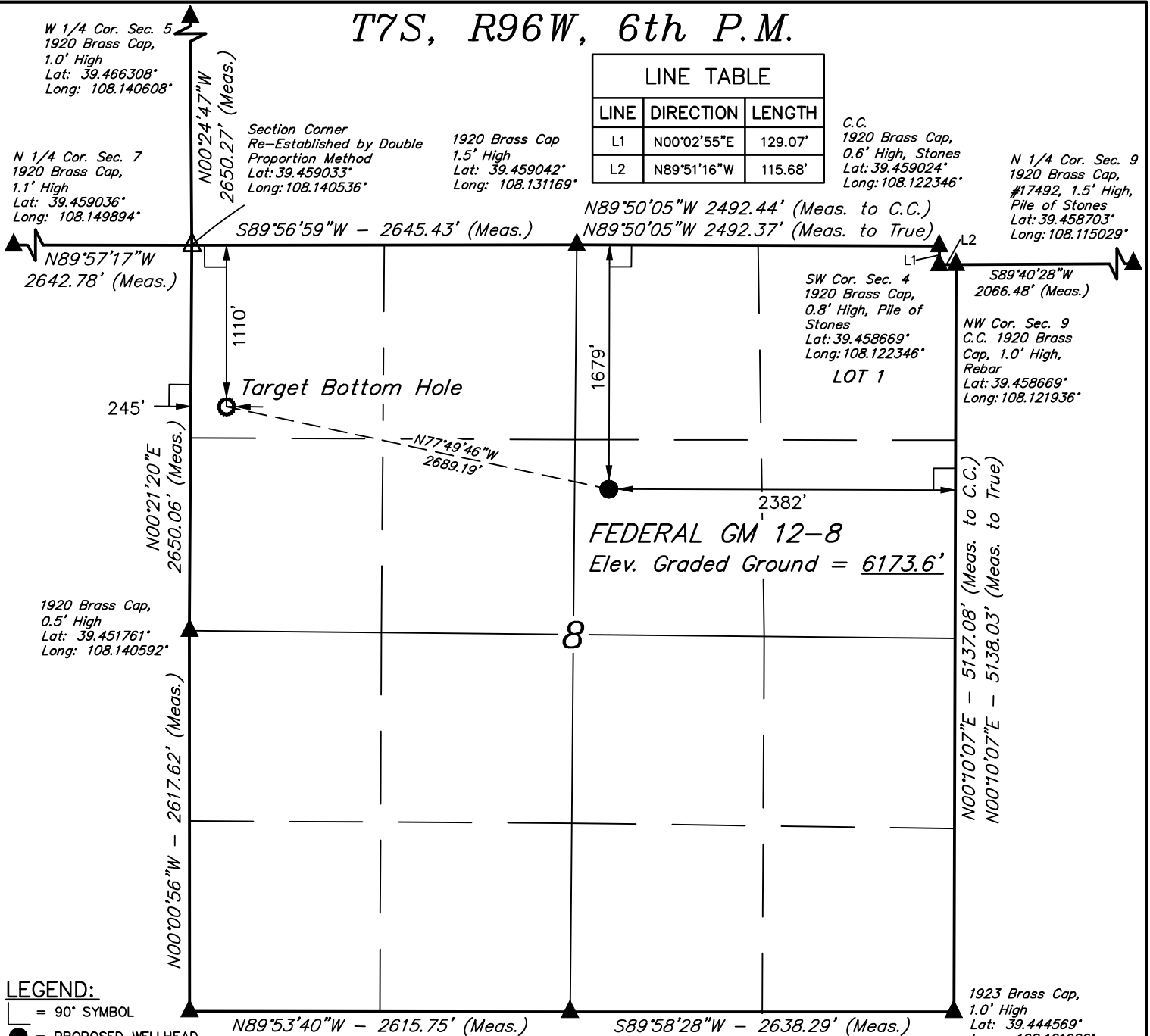
N 1/4 Cor. Sec. 7
1920 Brass Cap,
1.1' High
Lat: 39.459036°
Long: 108.149894°

Section Corner
Re-Established by Double
Proportion Method
Lat: 39.459033°
Long: 108.140536°

1920 Brass Cap
1.5' High
Lat: 39.459042°
Long: 108.131169°

SW Cor. Sec. 4
1920 Brass Cap,
0.8' High, Pile of
Stones
Lat: 39.458669°
Long: 108.122346°
LOT 1

NW Cor. Sec. 9
C.C. 1920 Brass
Cap, 1.0' High,
Rebar
Lat: 39.458669°
Long: 108.121936°



LEGEND:

- ◻ = 90° SYMBOL
- = PROPOSED WELLHEAD.
- = TARGET BOTTOM HOLE.
- ▲ = SECTION CORNERS LOCATED. (NAD 83)
- △ = SECTION CORNERS RE-ESTABLISHED. (Not Set on Ground.) (NAD 83)

PDOP = 2.4



NAD 83 (SURFACE LOCATION)	NAD 83 (TARGET BOTTOM HOLE)
LATITUDE = 39°27'15.96" (39.454433)	LATITUDE = 39°27'21.55" (39.455987)
LONGITUDE = 108°07'49.38" (108.130385)	LONGITUDE = 108°08'22.89" (108.139692)
STATE PLANE NAD 83 (CO. CEN.)	STATE PLANE NAD 83 (CO. CEN.)
N: 1601158.55 E: 2257369.61	N: 1601800.52 E: 2254759.06

CERTIFICATION

THIS IS TO CERTIFY THAT THE ABOVE PLAT WAS PREPARED AND LOCATION AS SHOWN WAS STAKED ON THE GROUND FROM FIELD NOTES OF ACTUAL SURVEYS MADE BY ME OR UNDER MY SUPERVISION AND THAT THE SAME ARE TRUE AND CORRECT TO THE BEST OF MY KNOWLEDGE AND BELIEF.

PLAT #1

REGISTERED LAND SURVEYOR
REGISTRATION NO. 10180
STATE OF COLORADO 06-05-18

REV: 1 06-21-18 M.D. (WELL NAME CHANGE)

BASIS OF BEARINGS

BASIS OF BEARINGS IS A G.P.S. OBSERVATION

BASIS OF ELEVATION

SPOT ELEVATION AT THE NORTHWEST CORNER OF SECTION 30, T7S, R95W, 6th P.M., TAKEN FROM THE FORKED GULCH, QUADRANGLE, COLORADO, GARFIELD COUNTY, 7.5 MINUTE QUAD. (TOPOGRAPHIC MAP) PUBLISHED BY THE UNITED STATES DEPARTMENT OF THE INTERIOR, GEOLOGICAL SURVEY. SAID ELEVATION IS MARKED AS BEING 5966 FEET.

UELS, LLC

Corporate Office * 85 South 200 East
Vernal, UT 84078 * (435) 789-1017



TEP Rocky Mountain LLC

FEDERAL GM 12-8
SW 1/4 NE 1/4, SECTION 8, T7S, R96W, 6th P.M.
GARFIELD COUNTY, COLORADO

SURVEYED BY	JOEL LEFEVRE	06-05-18	SCALE
DRAWN BY	T.L.L.	06-11-18	1" = 1000'

WELL LOCATION PLAT