

# T7S, R96W, 6th P.M.

| LINE TABLE |             |         |
|------------|-------------|---------|
| LINE       | DIRECTION   | LENGTH  |
| L1         | N00°02'55"E | 129.07' |
| L2         | N89°51'16"W | 115.68' |

C.C.  
1920 Brass Cap,  
0.6' High, Stones  
Lat: 39.459024°  
Long: 108.122346°

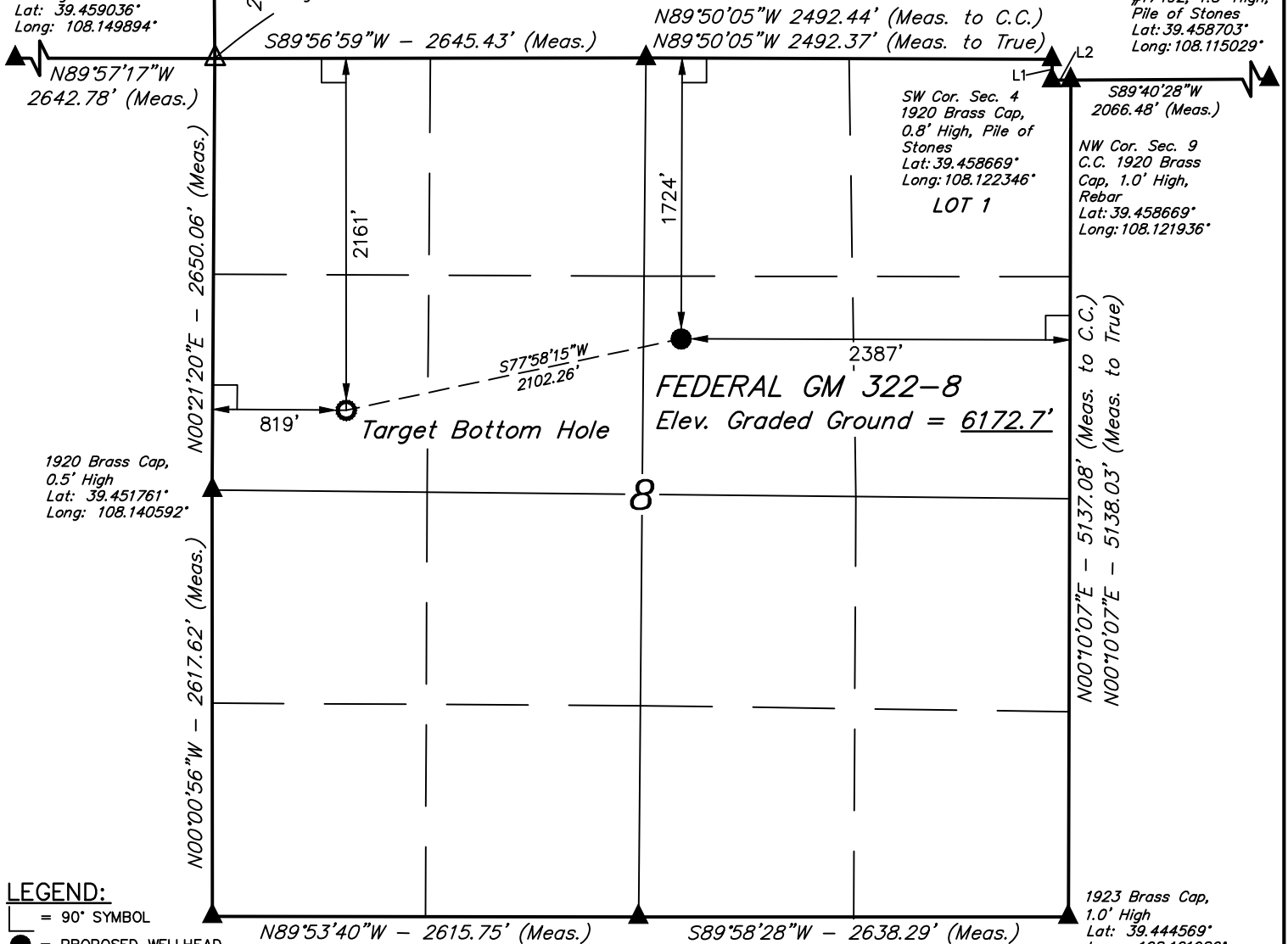
N 1/4 Cor. Sec. 9  
1920 Brass Cap,  
#17492, 1.5' High,  
Pile of Stones  
Lat: 39.458703°  
Long: 108.115029°

W 1/4 Cor. Sec. 5  
1920 Brass Cap,  
1.0' High  
Lat: 39.466308°  
Long: 108.140608°

N 1/4 Cor. Sec. 7  
1920 Brass Cap,  
1.1' High  
Lat: 39.459036°  
Long: 108.149894°

Section Corner  
Re-Established by Double  
Proportion Method  
Lat: 39.459033°  
Long: 108.140536°

1920 Brass Cap  
1.5' High  
Lat: 39.459042°  
Long: 108.131169°



## LEGEND:

- ◻ = 90° SYMBOL
- = PROPOSED WELLHEAD.
- = TARGET BOTTOM HOLE.
- ▲ = SECTION CORNERS LOCATED. (NAD 83)
- △ = SECTION CORNERS RE-ESTABLISHED. (Not Set on Ground.) (NAD 83)

PDOP = 2.4



| NAD 83 (SURFACE LOCATION)              | NAD 83 (TARGET BOTTOM HOLE)            |
|--|--|
| LATITUDE = 39°27'15.52" (39.454310)    | LATITUDE = 39°27'11.18" (39.453106)    |
| LONGITUDE = 108°07'49.45" (108.130402) | LONGITUDE = 108°08'15.65" (108.137681) |
| STATE PLANE NAD 83 (CO. CEN.)          | STATE PLANE NAD 83 (CO. CEN.)          |
| N: 1601113.98 E: 2257363.43            | N: 1600735.17 E: 2255296.26            |

## CERTIFICATION

THIS IS TO CERTIFY THAT THE ABOVE PLAT WAS PREPARED AND LOCATION AS SHOWN WAS STAKED ON THE GROUND FROM FIELD NOTES OF ACTUAL SURVEYS MADE BY ME OR UNDER MY SUPERVISION AND THAT THE SAME ARE TRUE AND CORRECT TO THE BEST OF MY KNOWLEDGE AND BELIEF.

PLAT #1

REGISTERED LAND SURVEYOR  
REGISTRATION NO. 109180  
STATE OF COLORADO

REV: 1 06-21-18 M.D. (WELL NAME CHANGE)

## BASIS OF BEARINGS

BASIS OF BEARINGS IS A G.P.S. OBSERVATION

## BASIS OF ELEVATION

SPOT ELEVATION AT THE NORTHWEST CORNER OF SECTION 30, T7S, R95W, 6th P.M., TAKEN FROM THE FORKED GULCH, QUADRANGLE, COLORADO, GARFIELD COUNTY, 7.5 MINUTE QUAD. (TOPOGRAPHIC MAP) PUBLISHED BY THE UNITED STATES DEPARTMENT OF THE INTERIOR, GEOLOGICAL SURVEY. SAID ELEVATION IS MARKED AS BEING 5966 FEET.

UELS, LLC

Corporate Office \* 85 South 200 East  
Vernal, UT 84078 \* (435) 789-1017



## TEP Rocky Mountain LLC

FEDERAL GM 322-8  
SW 1/4 NE 1/4, SECTION 8, T7S, R96W, 6th P.M.  
GARFIELD COUNTY, COLORADO

|             |              |          |            |
|-------------|--------------|----------|------------|
| SURVEYED BY | JOEL LEFEVRE | 06-05-18 | SCALE      |
| DRAWN BY    | T.L.L.       | 06-11-18 | 1" = 1000' |

WELL LOCATION PLAT