

T7S, R96W, 6th P.M.

W 1/4 Cor. Sec. 5
1920 Brass Cap,
1.0' High
Lat: 39.466308°
Long: 108.140608°

N 1/4 Cor. Sec. 7
1920 Brass Cap,
1.1' High
Lat: 39.459036°
Long: 108.149894°

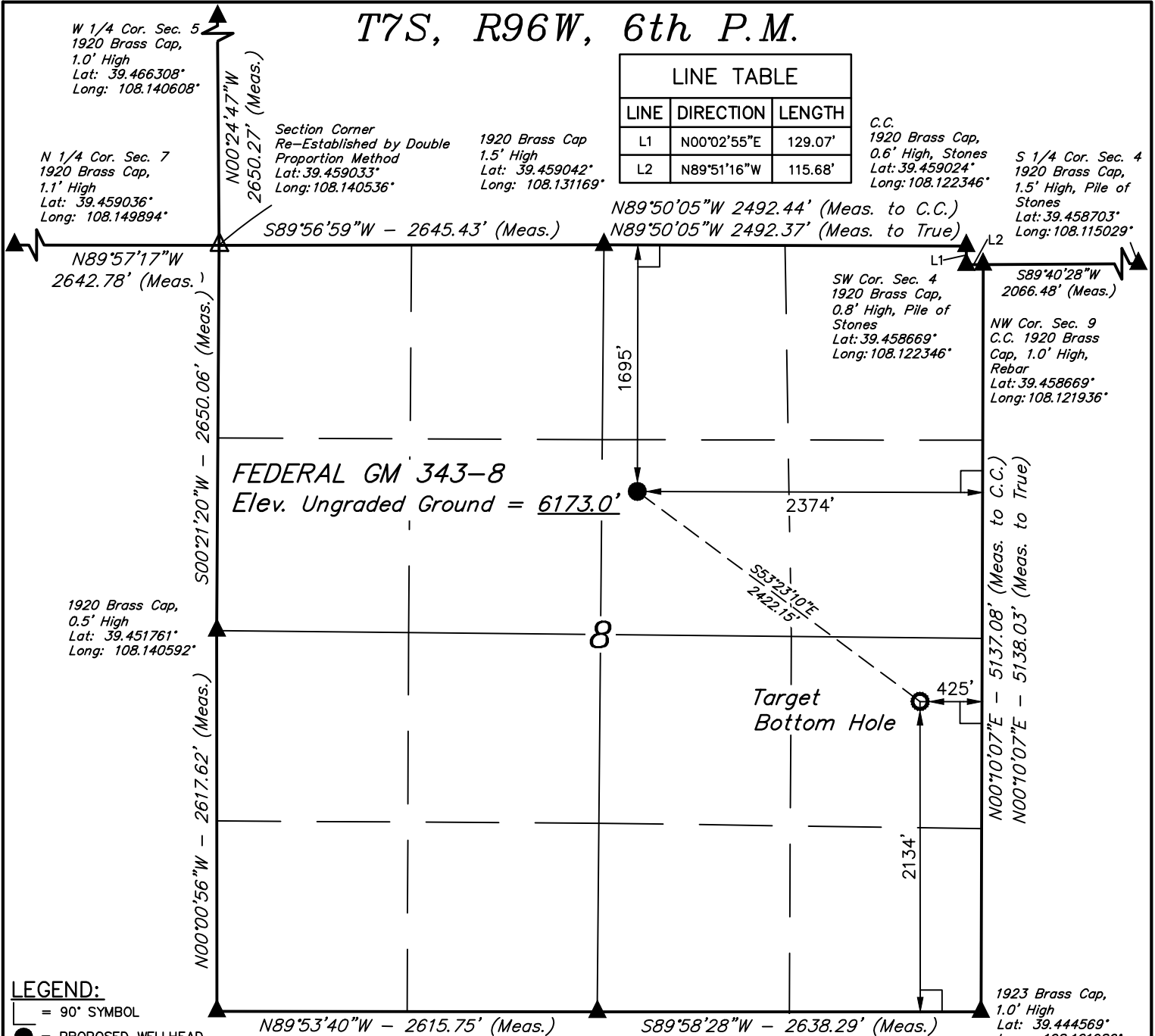
Section Corner
Re-Established by Double
Proportion Method
Lat: 39.459033°
Long: 108.140536°

1920 Brass Cap
1.5' High
Lat: 39.459042°
Long: 108.131169°

LINE TABLE		
LINE	DIRECTION	LENGTH
L1	N00°02'55"E	129.07'
L2	N89°51'16"W	115.68'

C.C.
1920 Brass Cap,
0.6' High, Stones
Lat: 39.459024°
Long: 108.122346°

S 1/4 Cor. Sec. 4
1920 Brass Cap,
1.5' High, Pile of
Stones
Lat: 39.458703°
Long: 108.115029°



CERTIFICATION

THIS IS TO CERTIFY THAT THE ABOVE PLAT WAS PREPARED AND LOCATION AS SHOWN WAS STAKED ON THE GROUND FROM FIELD NOTES OF ACTUAL SURVEYS MADE BY ME OR UNDER MY SUPERVISION AND THAT THE SAME ARE TRUE AND CORRECT TO THE BEST OF MY KNOWLEDGE AND BELIEF.

REGISTERED LAND SURVEYOR
REGISTRATION NO. 101810
STATE OF COLORADO

PLAT #1

REV: 1 06-21-18 M.D. (WELL NAME CHANGE)

BASIS OF BEARINGS

BASIS OF BEARINGS IS A G.P.S. OBSERVATION

BASIS OF ELEVATION

SPOT ELEVATION AT THE NORTHWEST CORNER OF SECTION 30, T7S, R95W, 6th P.M., TAKEN FROM THE FORKED GULCH, QUADRANGLE, COLORADO, GARFIELD COUNTY, 7.5 MINUTE QUAD. (TOPOGRAPHIC MAP) PUBLISHED BY THE UNITED STATES DEPARTMENT OF THE INTERIOR, GEOLOGICAL SURVEY. SAID ELEVATION IS MARKED AS BEING 5966 FEET.

UELS, LLC

Corporate Office * 85 South 200 East
Vernal, UT 84078 * (435) 789-1017

TEP Rocky Mountain LLC

FEDERAL GM 343-8
SW 1/4 NE 1/4, SECTION 8, T7S, R96W, 6th P.M.
GARFIELD COUNTY, COLORADO

SURVEYED BY	BART HUNTING	02-28-18	SCALE
DRAWN BY	M.D.	06-20-18	1" = 1000'

WELL LOCATION PLAT