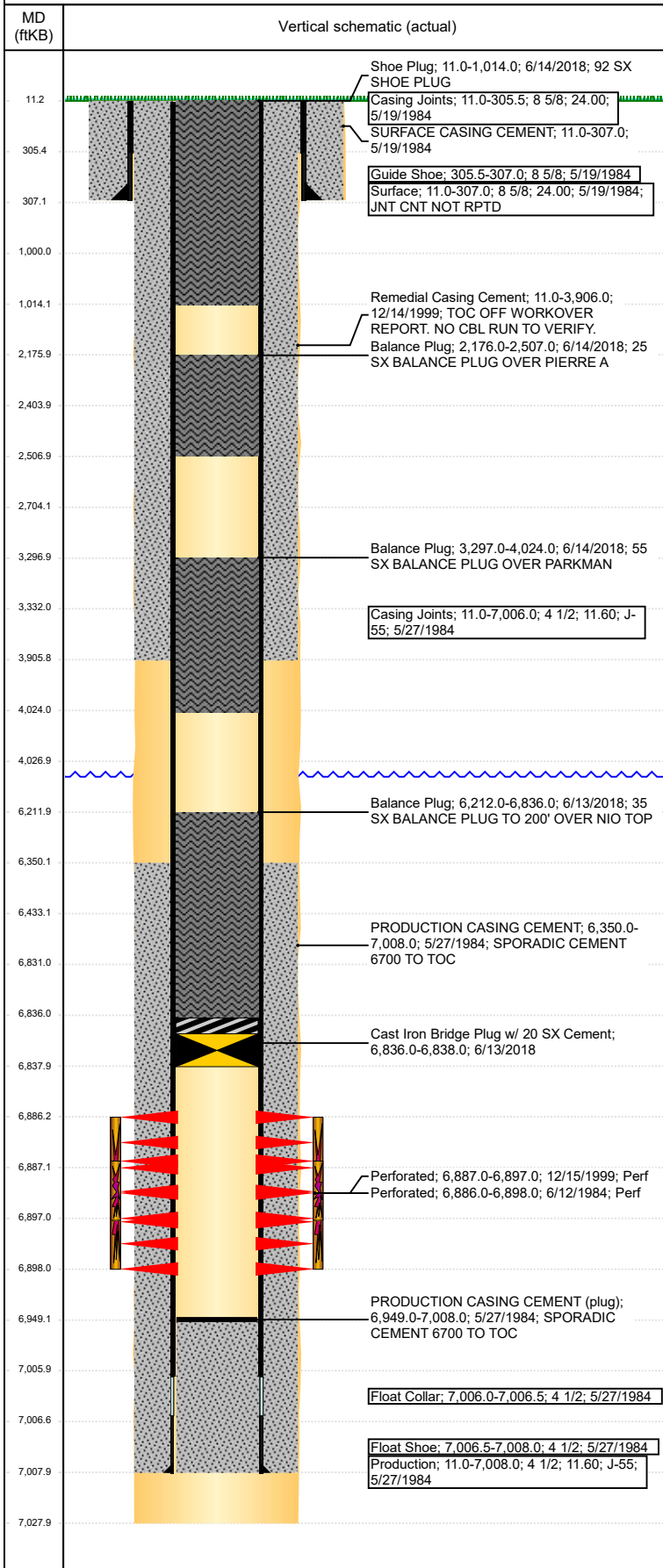


# Wellbore Schematic Input Report

Well Name: CARPIO 22-01

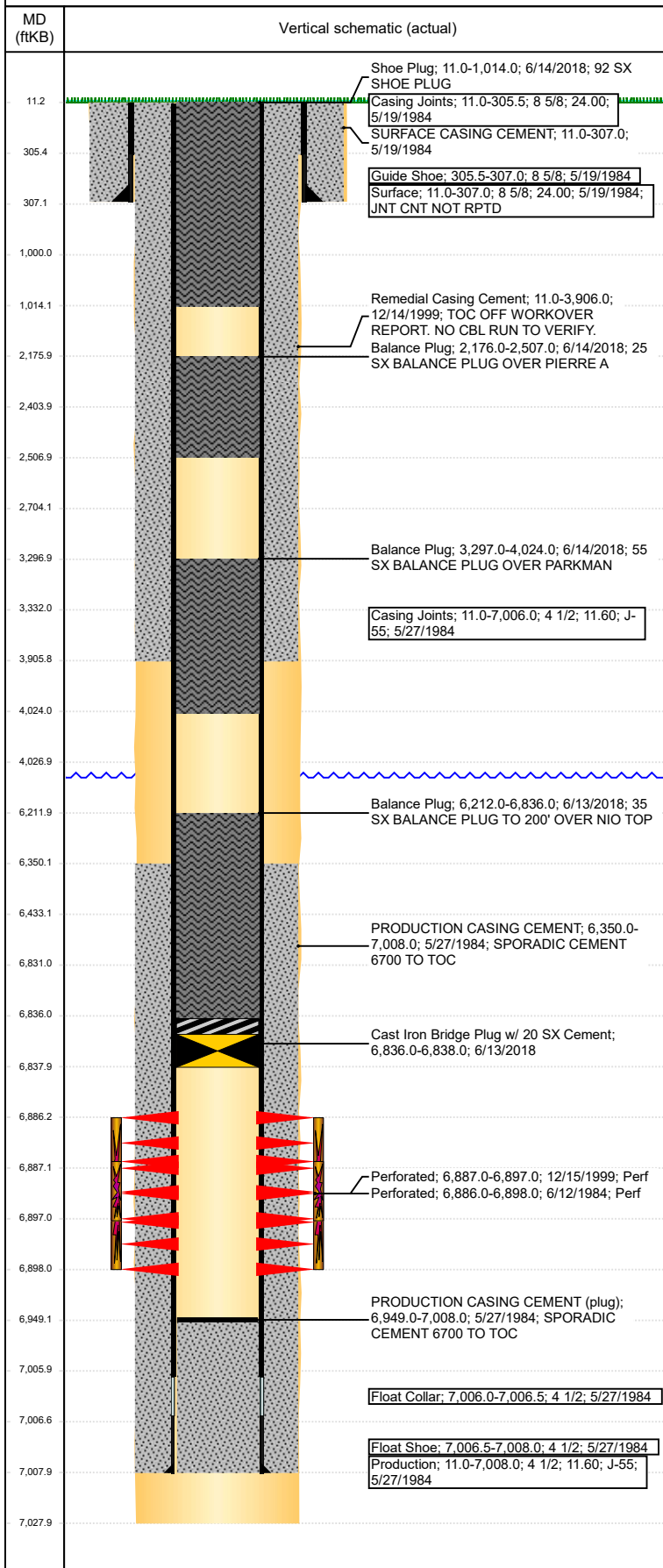
VERTICAL - ORIGINAL HOLE, 7/1/2018 7:13:10 PM



Well Header									
API 05-123-11786		Well Report Center 425777105		Well Configuration Type VERTICAL					
Original KB Elevation (ft) 4,708		KB - GL / MSL (ftKB) 11.00		Spud Date 5/19/1984		P & A Date 6/14/2018			
Production Route Watt - B3-06			Well Production Status PA			SoRT Ignore Yes			
Directions To Well				Actual Latitude (°) 40.46640600		Actual Longitude (°) -104.52918600			
Comment									
Congressional Location									
Quarter 3 SE		Quarter 4 SE		Section 22	Township 6	Twnshp N/S Dir N	Range 64		Range E/W Dir W
Rig Operator									
Rig Operator ANTELMO CARDANAS, RIG OPERATOR									
Plug Back Total Depths									
Date		Depth (ftKB)		Method		Com			
12/24/1999		6,949.0		TAG		CLEAN OUT			
Wellbore Sections									
Section Des			Size (in)		Act Top, MD (ftKB)		Act Btm, MD (ftKB)		
SURFACE			12 1/4		11		307		
PRODUCTION			7 7/8		307		7,028		
Zone Statuses									
Zone Name			Status Date			Status			
CODELL			6/13/2018			P&A			
Casing Strings									
Surface, 307.0ftKB									
Casing Description Surface		Run Date 5/19/1984	OD (in) 8 5/8	Wt/Len (l... 24.00	Grade J-55	Top, MD (ft... 11.0	MD (ftKB) 307.0		
Production, 7,008.0ftKB									
Casing Description Production		Run Date 5/27/1984	OD (in) 4 1/2	Wt/Len (l... 11.60	Grade J-55	Top, MD (ft... 11.0	MD (ftKB) 7,008.0		
Cement									
Des			Start Date		Top (ftKB)		Btm (ftKB)		
SURFACE CASING CEMENT			5/19/1984		11.0		307.0		
PRODUCTION CASING CEMENT			5/27/1984		6,350.0		7,008.0		
Remedial Casing Cement			12/14/1999		11.0		3,906.0		
Balance Plug			6/13/2018		6,212.0		6,836.0		
Balance Plug			6/14/2018		3,297.0		4,024.0		
Balance Plug			6/14/2018		2,176.0		2,507.0		
Shoe Plug			6/14/2018		11.0		1,014.0		
Proposed Cement									
Des					Top (ftKB)		Btm (ftKB)		
Balance Plug					6,433.0		6,831.0		
Balance Plug					3,332.0		4,027.0		
Balance Plug					2,404.0		2,704.0		
Shoe Plug					11.0		1,000.0		
Tubing Strings									
Tubing Description Tubing - Production		Run Date 12/24/1999	String... 2 3/8	ID (in) 2.00	Wt (lb/ft) 4.70	Grade J-55	Len (ft) 6,871.00	Set De...	
Tubing Components									
Item Des		OD (in)	Wt (lb/ft)	Grade	Jts	Len (ft)	Btm (ftKB)	Btm (TVD) (ftKB)	
Tubing		2 3/8	4.70	J-55	212	6,869.40	6,880.4		
Seal Nipple		2 3/8			1	1.10	6,881.5		
Notched collar		2 3/8			1	0.50	6,882.0		
Other In Hole									
Run Date		Des			OD (in)	Top (ftKB)	Btm (ftKB)		
6/13/2018		Cast Iron Bridge Plug w/ 20 SX Cement			3.99	6,836.0	6,838.0		
Proposed Other In Hole									
Des				OD (in)		Top (ftKB)	Btm (ftKB)		
Cast Iron Bridge Plug				3.99		6,831.0	6,836.0		
Logs									
Date		Type				Top, MD (ftKB)	Btm, MD (ftKB)		
5/26/1984		COMPENSATED NEUTRON				3,500.0	7,032.0		
5/26/1984		INDUCTION				3,500.0	7,032.0		

**Well Name: CARPIO 22-01**

VERTICAL - ORIGINAL HOLE, 7/1/2018 7:13:11 PM



Logs			
Date	Type	Top, MD (ftKB)	Btm, MD (ftKB)
7/7/1984	CEMENT BOND	6,300.0	6,944.0
9/29/2015	GYRO	11.0	6,700.0
6/14/2018	CEMENT BOND	11.0	6,338.0

Perforation Data				
Linked Zone	Sum of Entered Shot Total	Top (ftKB)	Btm (ftKB)	Date
CODELL, ORIGINAL HOLE	24	6,886.00	6,898.00	6/12/1984
CODELL, ORIGINAL HOLE	40	6,887.00	6,897.00	12/15/1999
<b>Total (Sum)</b>	<b>64</b>			

Job Supply Amounts					
Supply Item Des	Type	Uni...	Job Category	Total...	Total...
WATER - LOE	PUBLIC	bbl	ABANDON	450.0	450.0
				0	0.0

Daily Cost Breakdown by Category		
Sum of Field Est...	Cost Description	Note
1,500.00	Downhole	DALLAS RUSSELL
1,211.52	Downhole	HYDRO TESTER
90.00	Downhole	TOILET
200.00	Downhole	TRUCKING
1,200.00	Downhole	TRAILERS
2,000.00	Downhole	SITE PREP
30,710.00	Downhole	P&A BID
<b>36,911.52</b>		