



Well Services
E - L I N E

**RADIAL CEMENT BOND
GAMMA RAY
CCL LOG**

Company SRC ENERGY INC.
Well WALKER SHANDS 18-18
Field WATTENBERG
County WELD
State CO

Location: API # : 05-123-32267
NE/NW
LAT. 40.492282 LONG. -104.823945
SEC 18 TWP 6N RGE 66W
Permanent Datum GL Elevation 4,852'
Log Measured From K.B. OF 12' Elevation 4,864'
Drilling Measured From KELLY BUSHING D.F. 4,863'
G.L. 4,852'

Date 5-31-2018
Run Number ONE
Depth Driller 7,569'
Depth Logger 2,204'
Bottom Logged Interval 2,200'
Top Log Interval SURFACE
Open Hole Size 7 7/8"
Type Fluid WATER
Density / Viscosity 1.0
Max. Recorded Temp. 93.5264 DEG. F.
Estimated Cement Top SURFACE
Time Well Ready ON ARRIVAL
Time Logger on Bottom N/A
Equipment Number 3813
Location GREELEY, CO
Recorded By J.KERR
Witnessed By S.ANDERSON

Borehole Record				Tubing Record			
Run Number	Bit	From	To	Size	Weight	From	To

Casing Record	Size	Wgt/Ft	Top	Bottom
Surface String	8.625"	24#	SURFACE	679'
Prot. String				
Production String	4.5"	11.6#	SURFACE	7,569'
Liner				

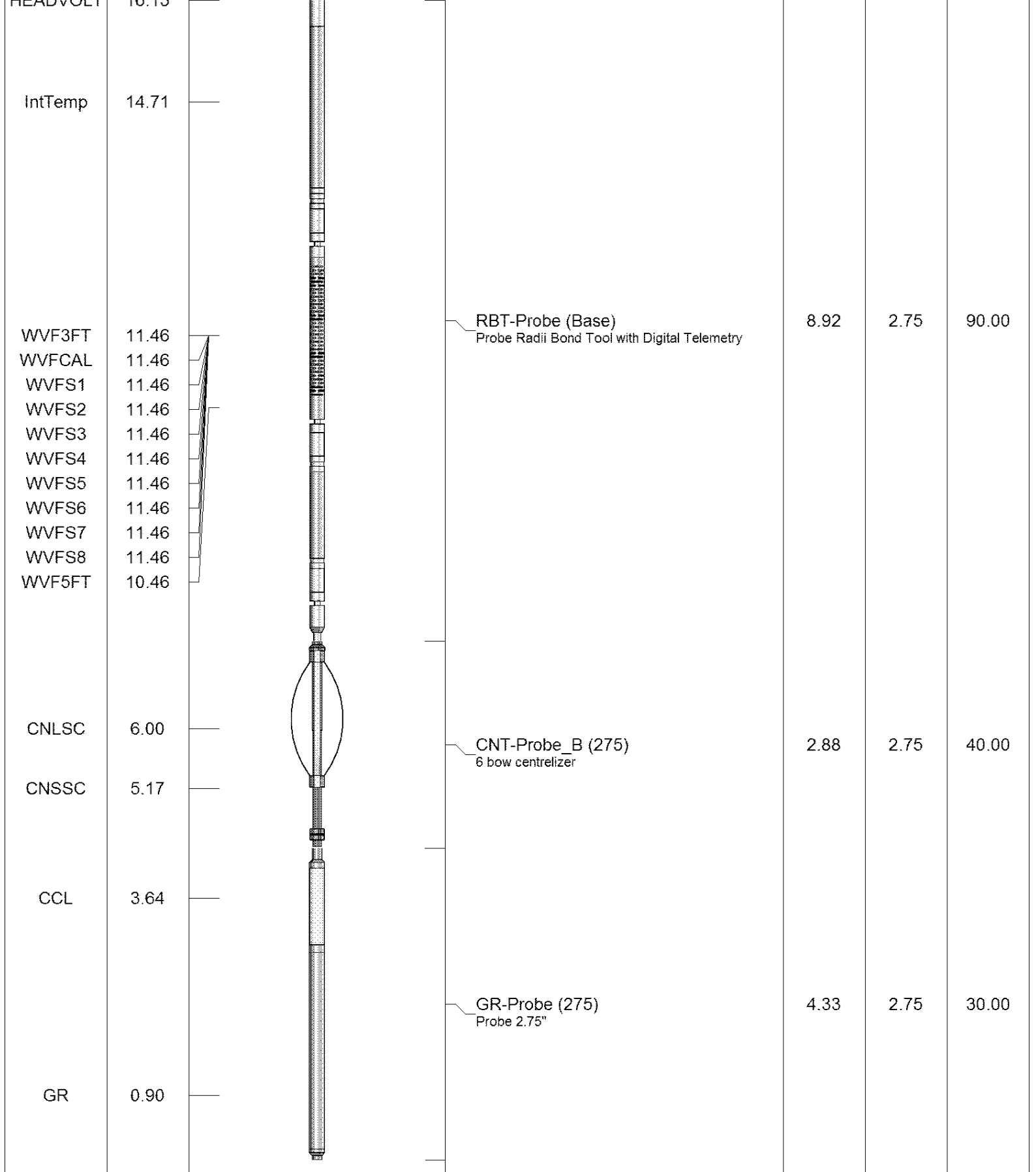
<<< Fold Here >>>

All interpretations are opinions based on inferences from electrical or other measurements and we cannot and do not guarantee the accuracy or correctness of any interpretation, and we shall not, except in the case of gross or willful negligence on our part, be liable or responsible for any loss, costs, damages, or expenses incurred or sustained by anyone resulting from any interpretation made by any of our officers, agents or employees. These interpretations are also subject to our general terms and conditions set out in our current Price Schedule.

Comments

RAN CBL TO VERIFY CEMENT COVERAGE
CORRELATED TO K.B. OF 12'
QUESTIONABLE FLUID FROM 208' TO SURFACE

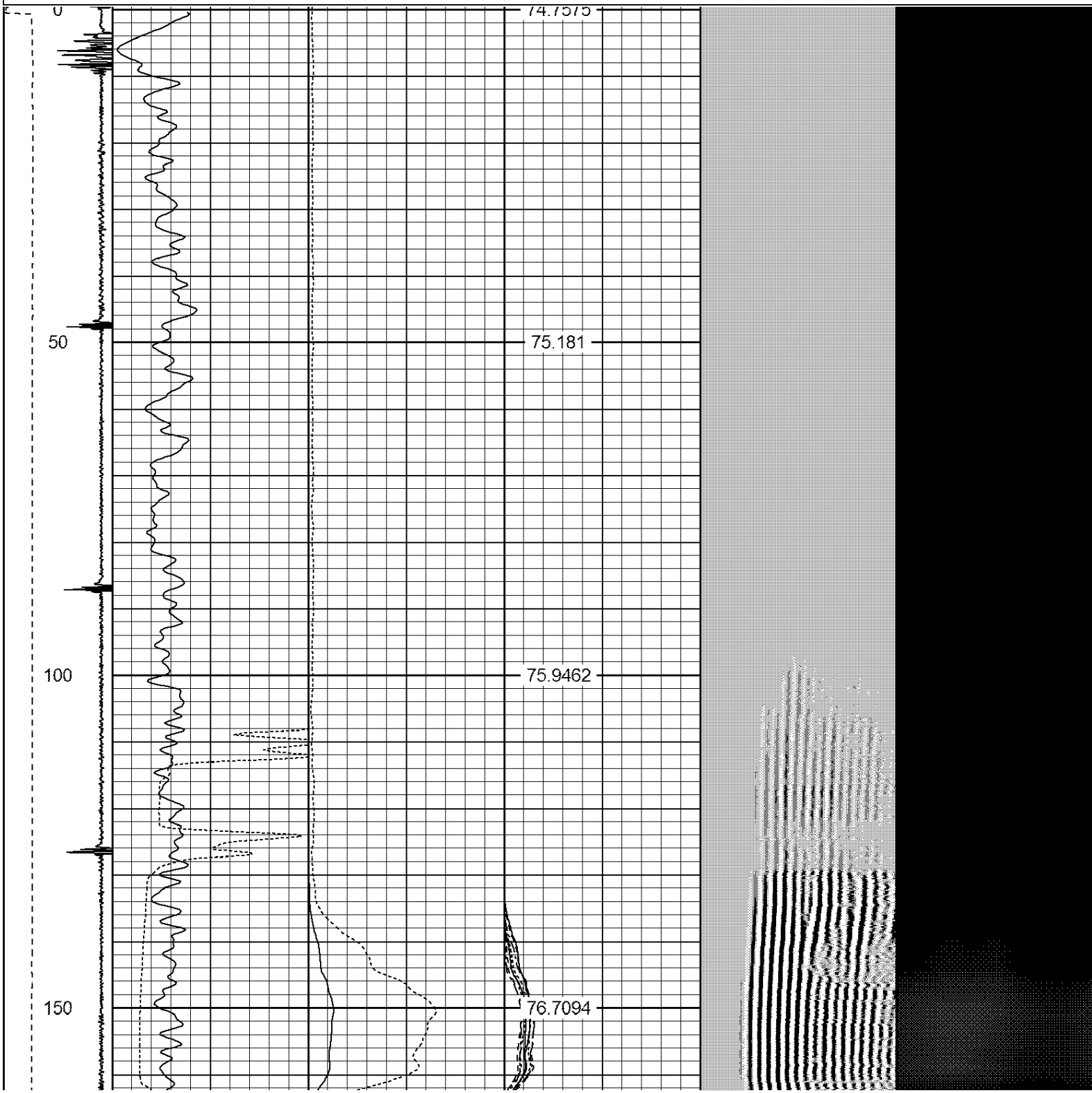
Sensor	Offset (ft)	Schematic	Description	Len (ft)	OD (in)	Wt (lb)
			1_4	1.00	1.36	5.00

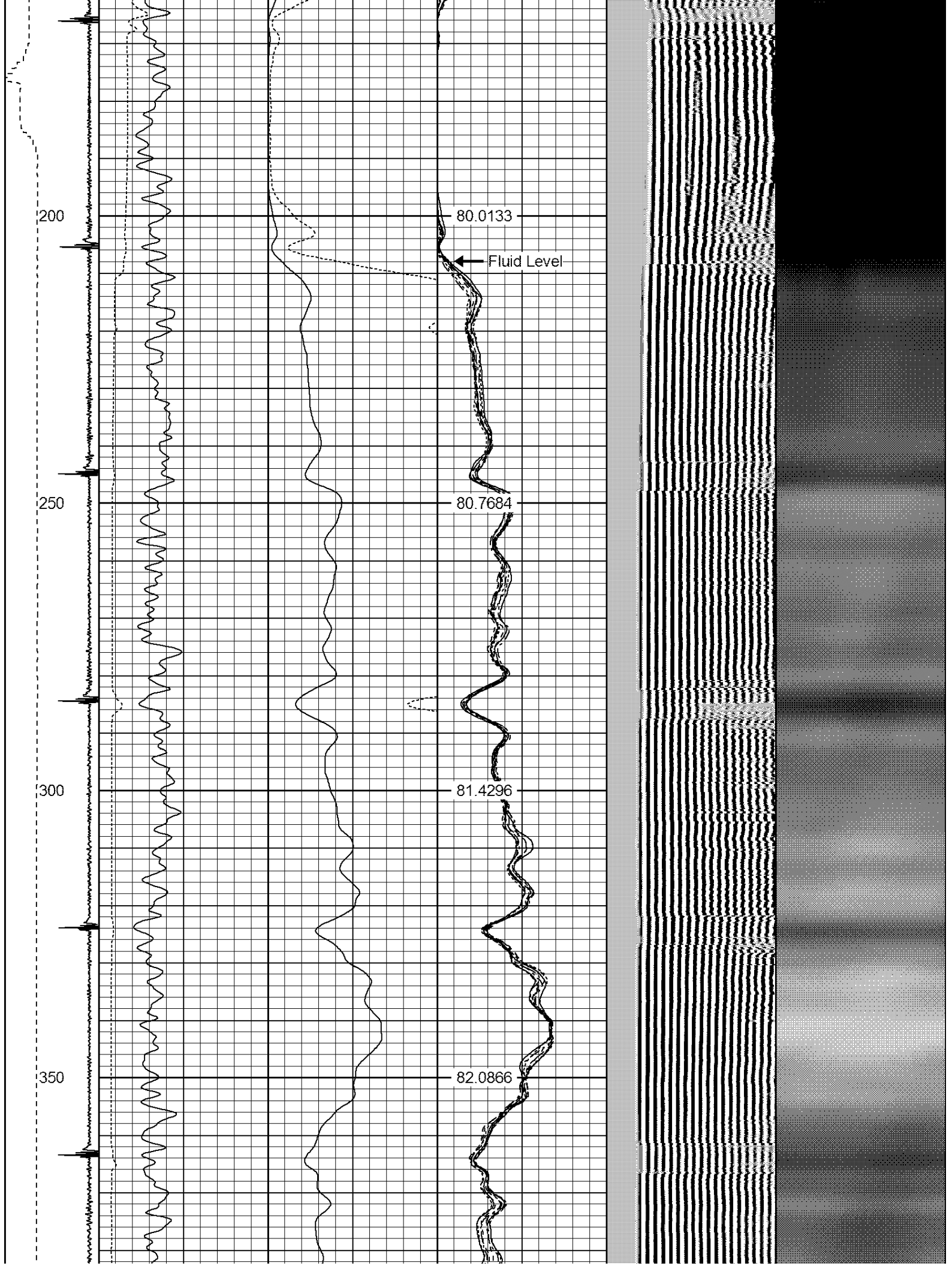


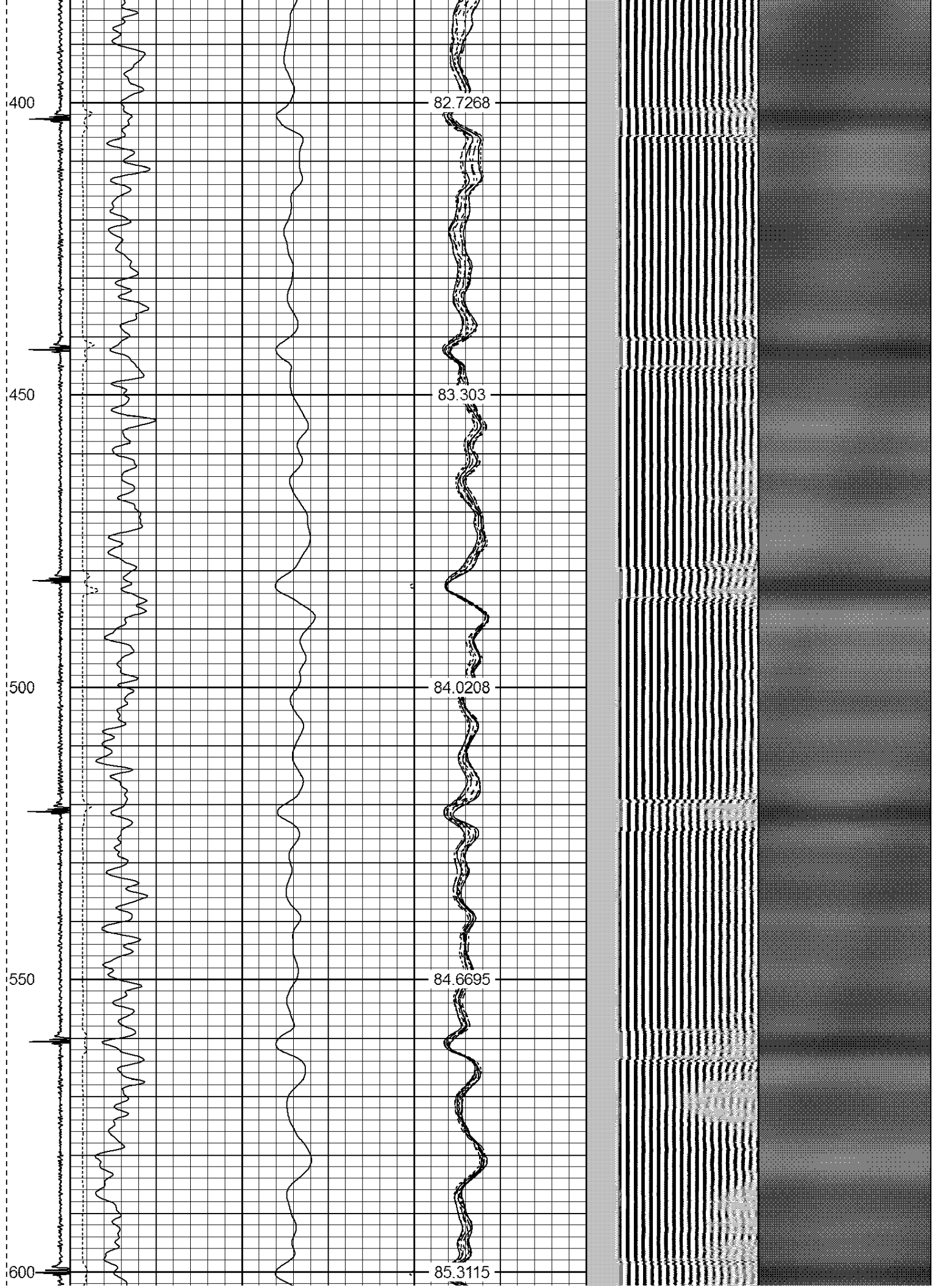
Dataset: walker shands 18-18.db: field/well/run1/pass2
 Total Length: 17.13 ft
 Total Weight: 165.00 lb
 O.D.: 2.75 in

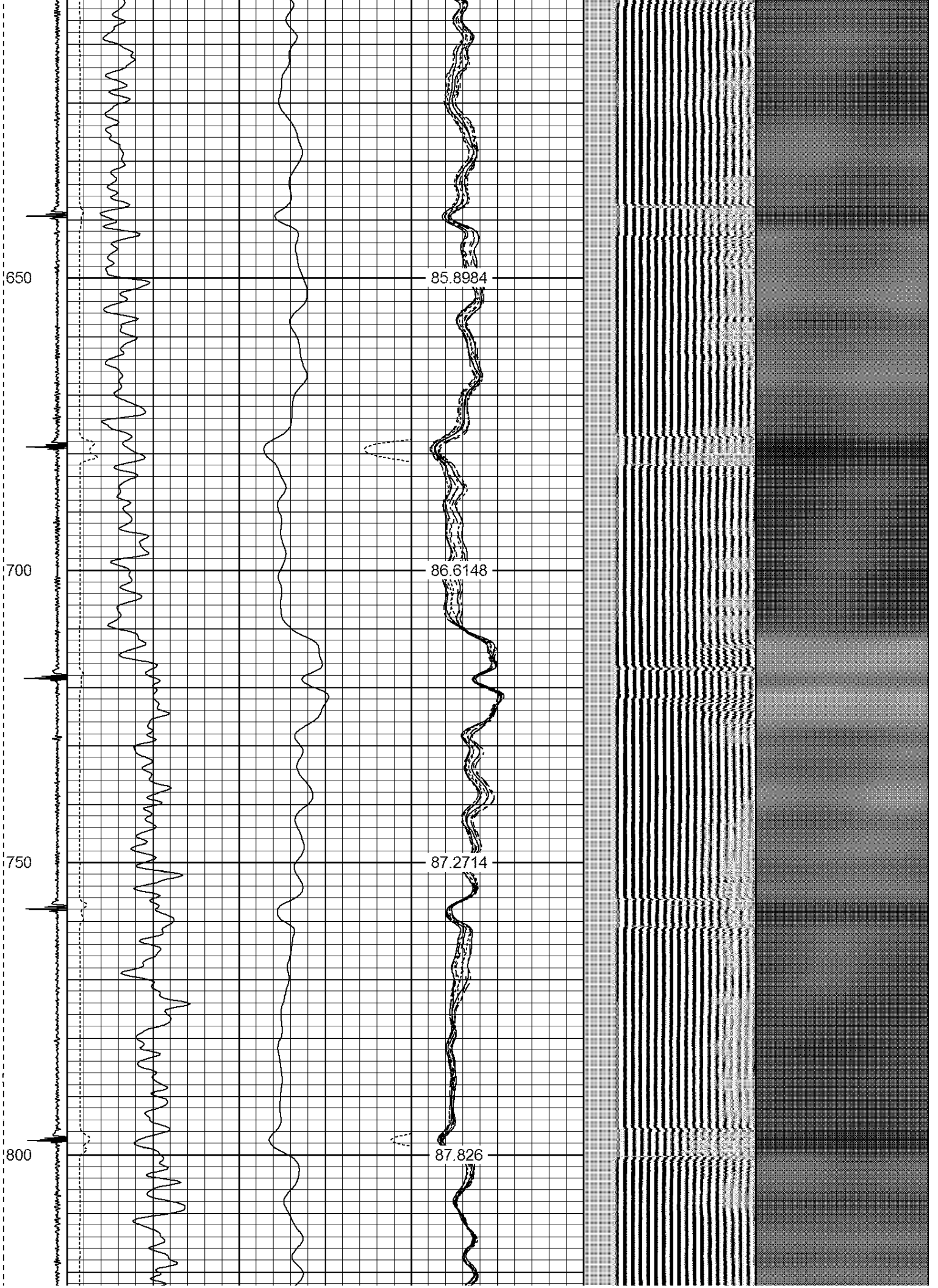
Database File: walker shands 18-18.db
 Dataset Pathname: pass2
 Presentation Format: ips_rbt

-9	CCL	1	200	TT (usec)	1100	0	AMP (mV)	100	0	AMPS1	100	200	VDL	1200	1	Cement Map	8
	LSPD		0	GR (GAPI)	200	0	AMPx5 (mV)	20	0	AMPS2	100				100		1
	(ft/min)		200	GR (GAPI)	400				0	AMPS3	100						
0		250							0	AMPS4	100						
									0	AMPS5	100						
									0	AMPS6	100						
									0	AMPS7	100						
									0	AMPS8	100						
										IntTemp							
										(degF)							









850

88.5196

900

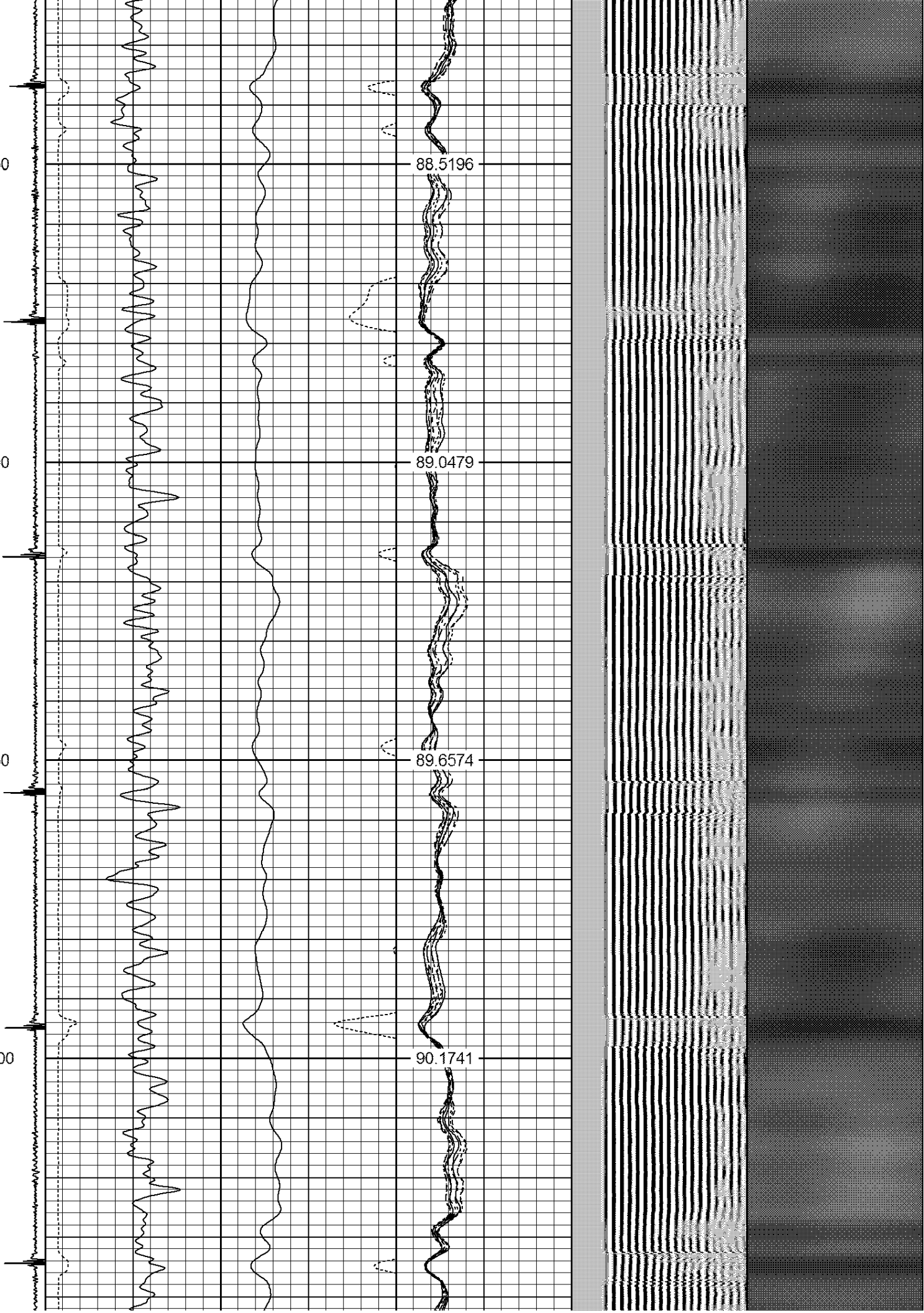
89.0479

950

89.6574

1000

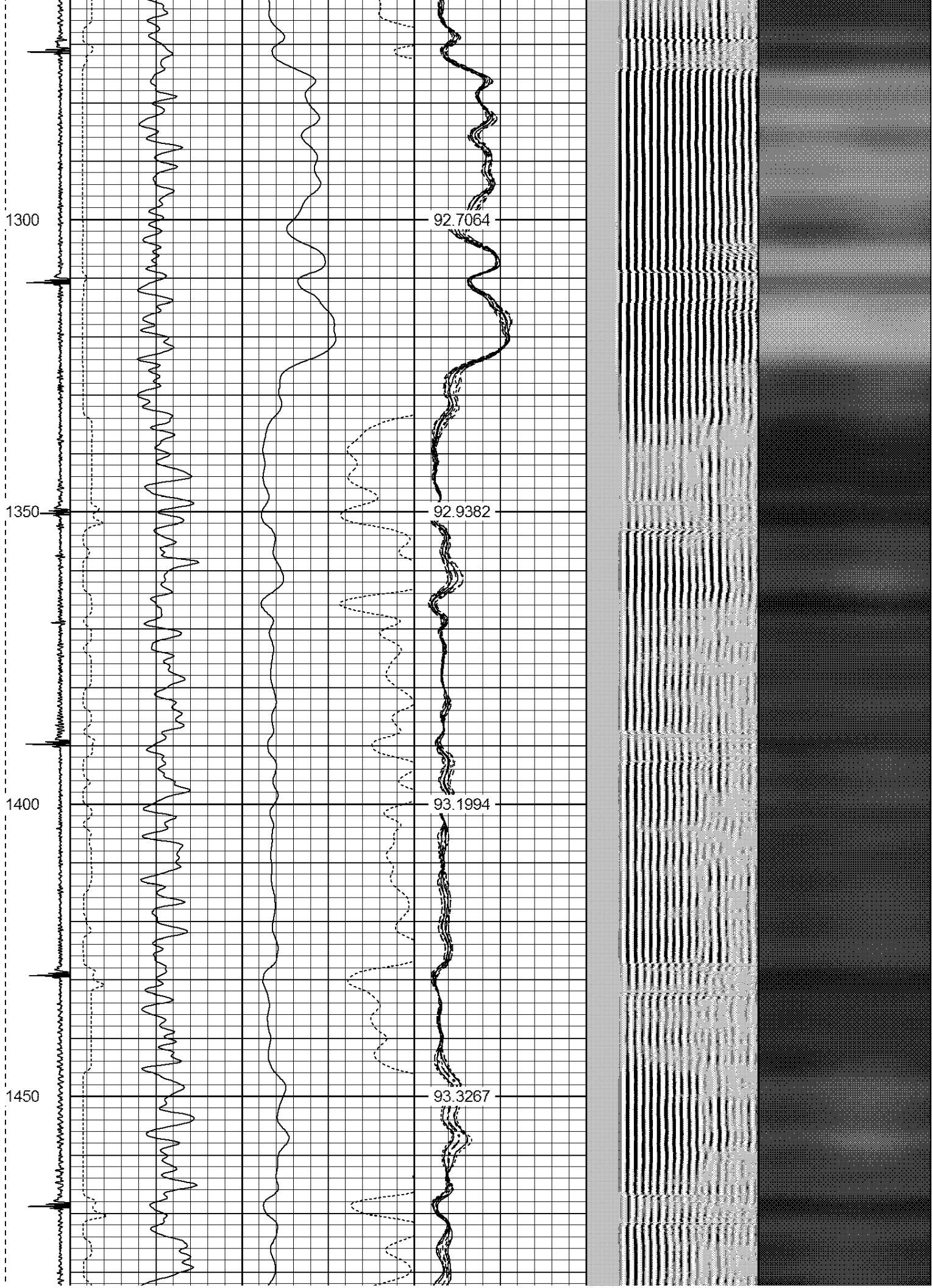
90.1741

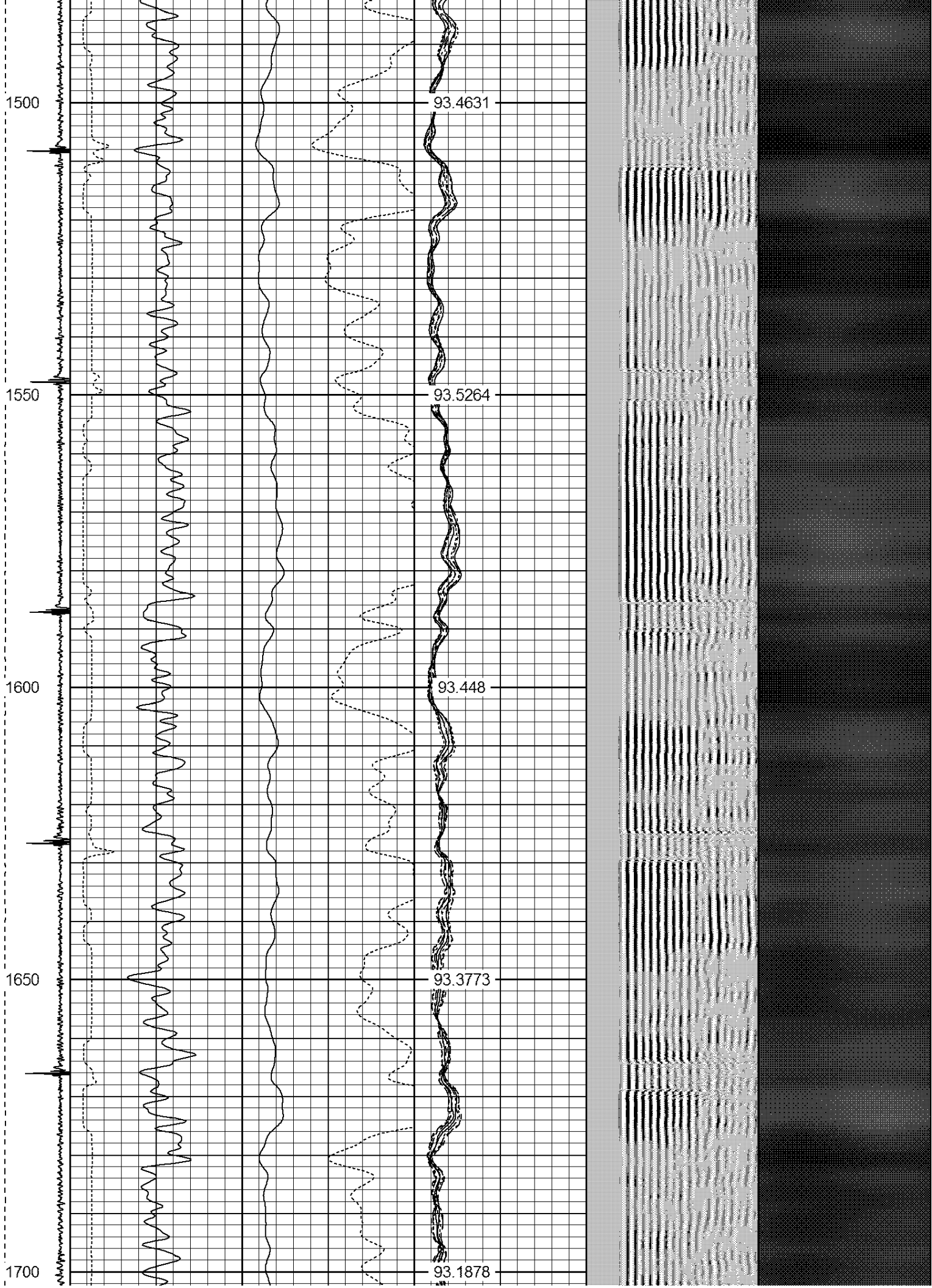


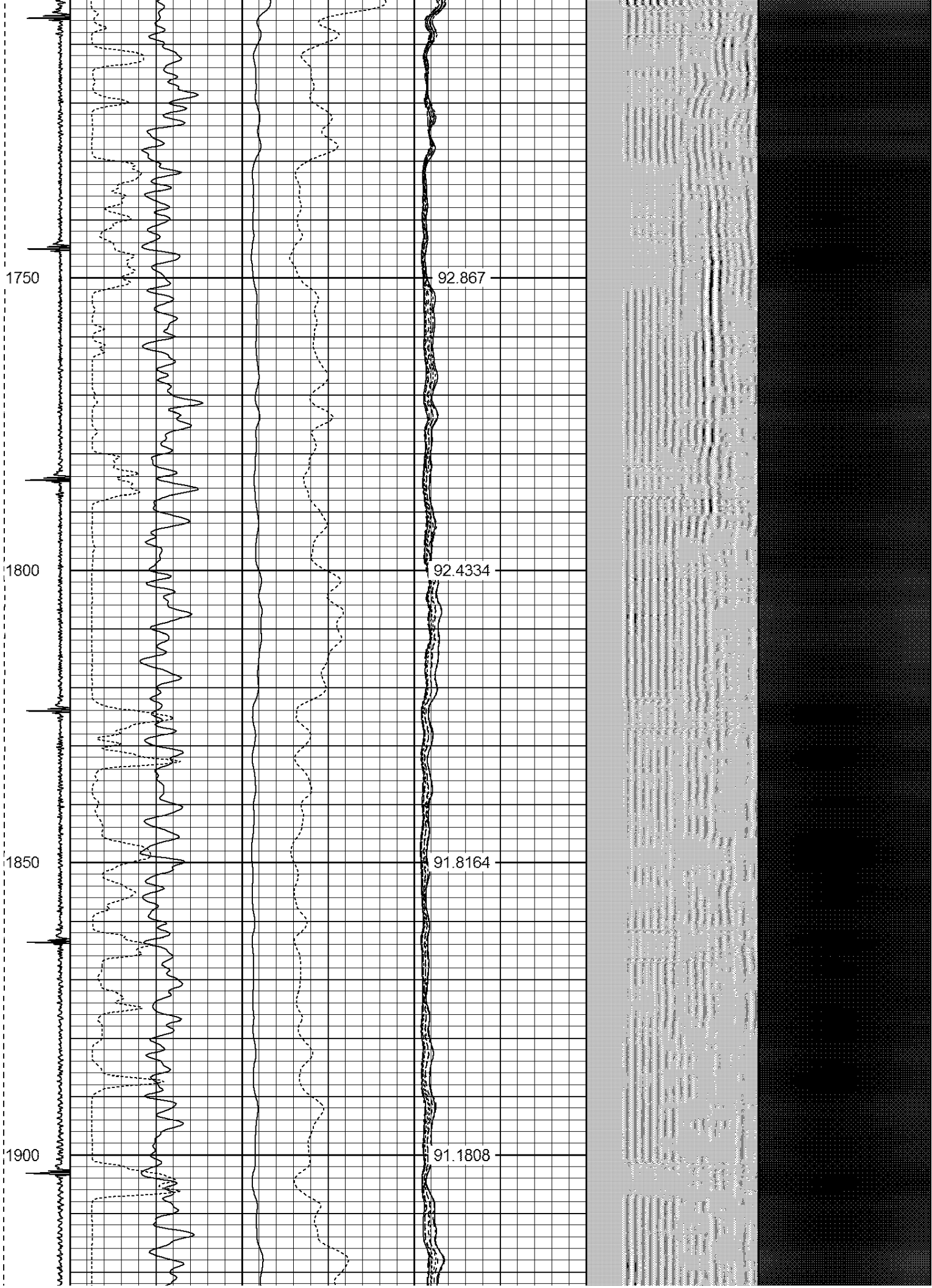
1050
1100
1150
1200
1250

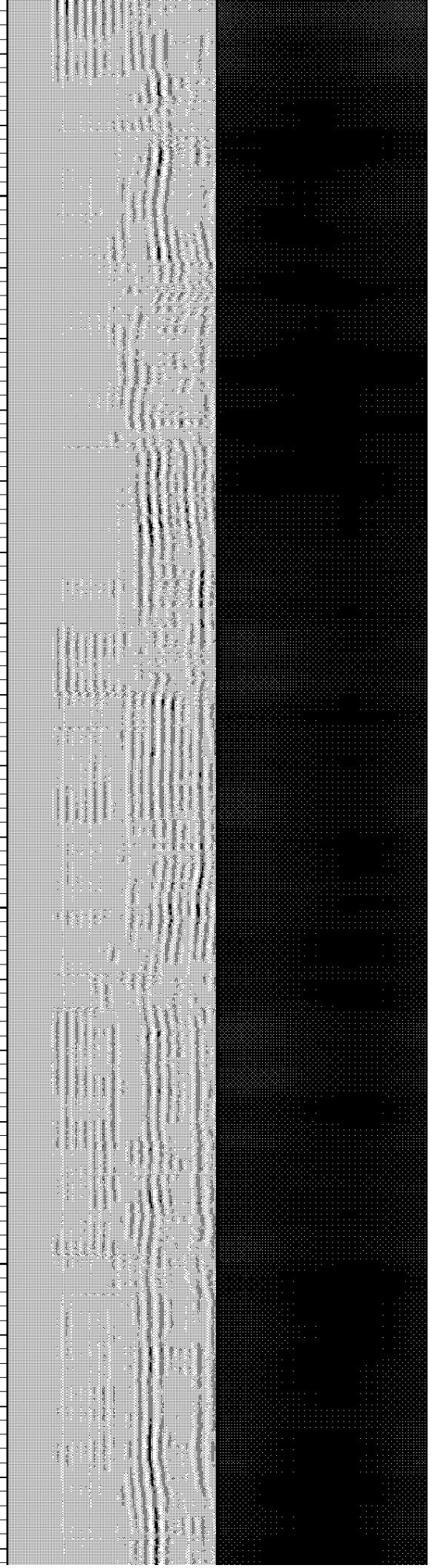
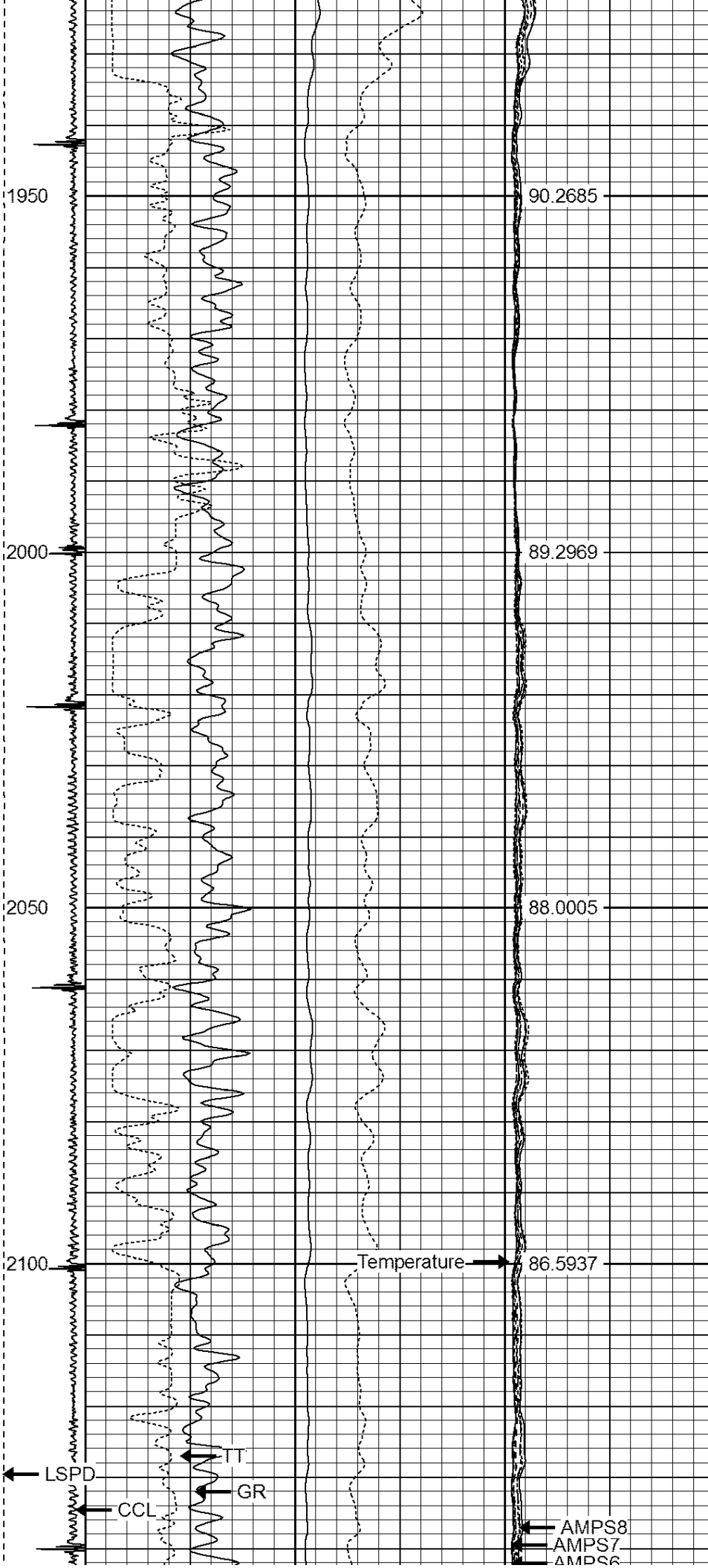
90.6488
91.0447
91.5248
91.9481
92.2762

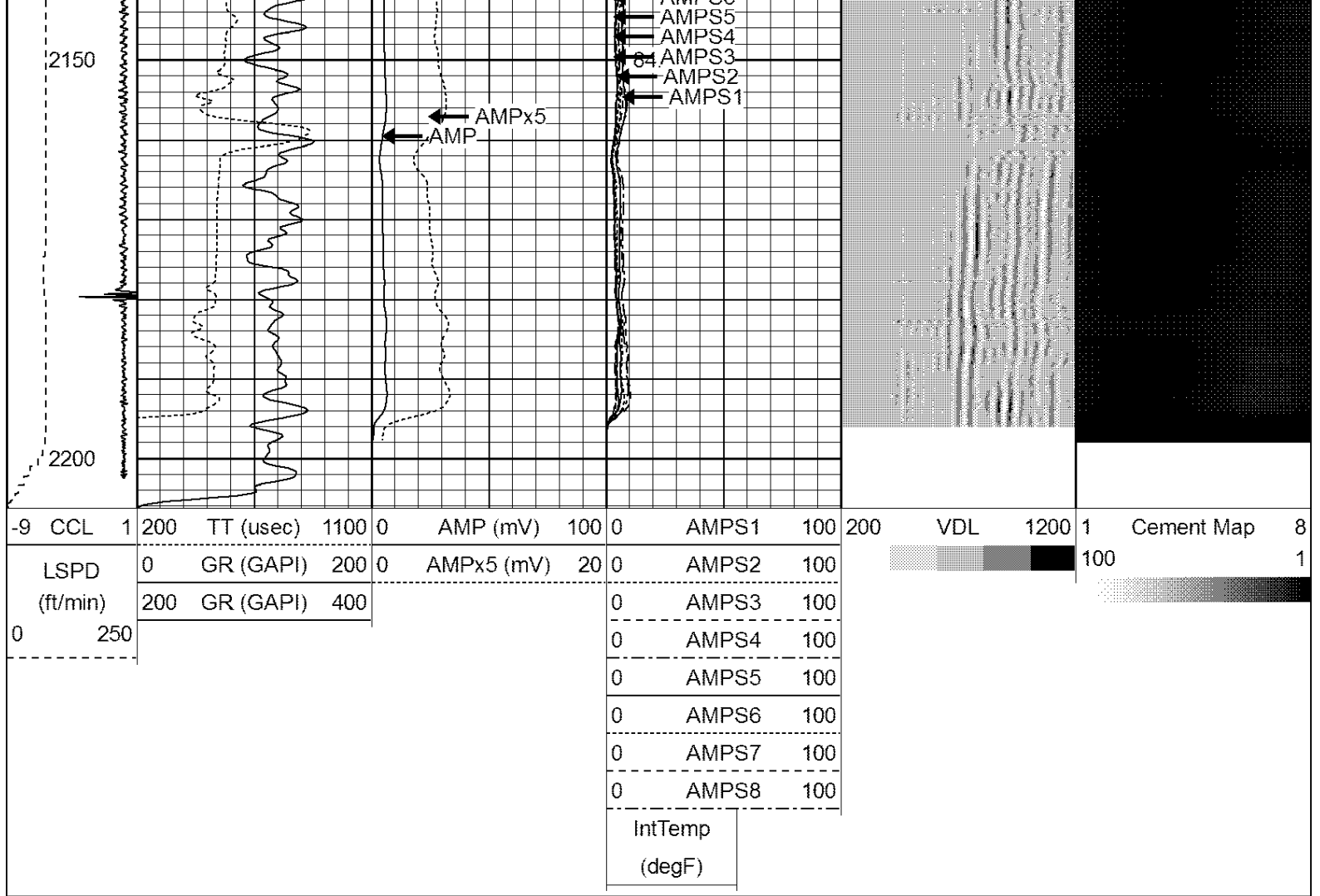












Calibration Report

Database File: walker shands 18-18.db
 Dataset Pathname: pass2
 Dataset Creation: Thu May 31 07:20:47 2018 by Log SCH 120126

Gamma Ray Calibration Report

Serial Number: 275
 Tool Model: Probe
 Performed: Tue Sep 23 07:13:12 2014

Calibrator Value: 100.0 GAPI
 Background Reading: 35.0 cps
 Calibrator Reading: 160.0 cps

Sensitivity: 1.0000 GAPI/cps

Compensated Neutron Calibration Report

Serial Number: 275
 Tool Model: Probe_B

CALIBRATION

Wed Jul 30 08:47:19 2008

Detector	Readings	Target	Normalization
Short Space	5001.20 cps	0.00 cps	1.0000
Long Space	1029.31 cps	0.00 cps	1.0000

PRE-SURVEY VERIFICATION

	Detector	Readings	Measured	Target
1)	Short Space Long Space	cps cps	pu	pu
2)	Short Space Long Space	cps cps	pu	
3)	Short Space Long Space	cps cps	pu	

POST-SURVEY VERIFICATION

	Detector	Readings	Measured	Target
1)	Short Space Long Space	cps cps	pu	pu
2)	Short Space Long Space	cps cps	pu	pu
3)	Short Space Long Space	cps cps	pu	pu

Segmented Cement Bond Log Calibration Report

Serial Number:	Base		
Tool Model:	Probe		
Calibration Casing Diameter:	4.500	in	
Calibration Depth:	170.953	ft	

Master Calibration, performed Thu May 31 07:05:13 2018:

	Raw (v)		Calibrated (mv)		Results	
	Zero	Cal	Zero	Cal	Gain	Offset
3'	0.000	1.580	1.000	81.196	50.770	1.000
CAL	0.000	1.513				
5'	0.000	1.653	1.000	81.196	48.524	1.000
SUM						
S1	0.000	1.504	0.500	81.196	53.658	0.500
S2	0.000	1.540	0.500	81.196	52.408	0.500
S3	0.000	1.575	0.500	81.196	51.226	0.500
S4	0.000	1.585	0.500	81.196	50.913	0.500
S5	0.000	1.601	0.500	81.196	50.415	0.500
S6	0.000	1.597	0.500	81.196	50.538	0.500
S7	0.000	1.564	0.500	81.196	51.600	0.500
S8	0.000	1.537	0.500	81.196	52.518	0.500

Internal Reference Calibration, performed Tue Jun 05 07:53:42 2012:

	Raw (v)		Calibrated (v)		Results	
	Zero	Cal	Zero	Cal	Gain	Offset
CAL	0.000	0.000	0.000	1.513	1.000	0.000

Air Zero Calibration, performed Thu May 31 07:04:06 2018:

	Raw (v)		Calibrated (v)		Results	
	Zero		Zero			Offset
3'	0.000		0.000			0.000
5'	0.000		0.000			0.000

S	0.000	0.000	0.000
SUM			
S1	0.000	0.000	0.000
S2	0.000	0.000	0.000
S3	0.000	0.000	0.000
S4	0.000	0.000	0.000
S5	0.000	0.000	0.000
S6	0.000	0.000	0.000
S7	0.000	0.000	0.000
S8	0.000	0.000	0.000



Well Services
E - L I N E

Company SRC ENERGY INC.
 Well WALKER SHANDS 18-18
 Field WATTENBERG
 County WELD
 State CO