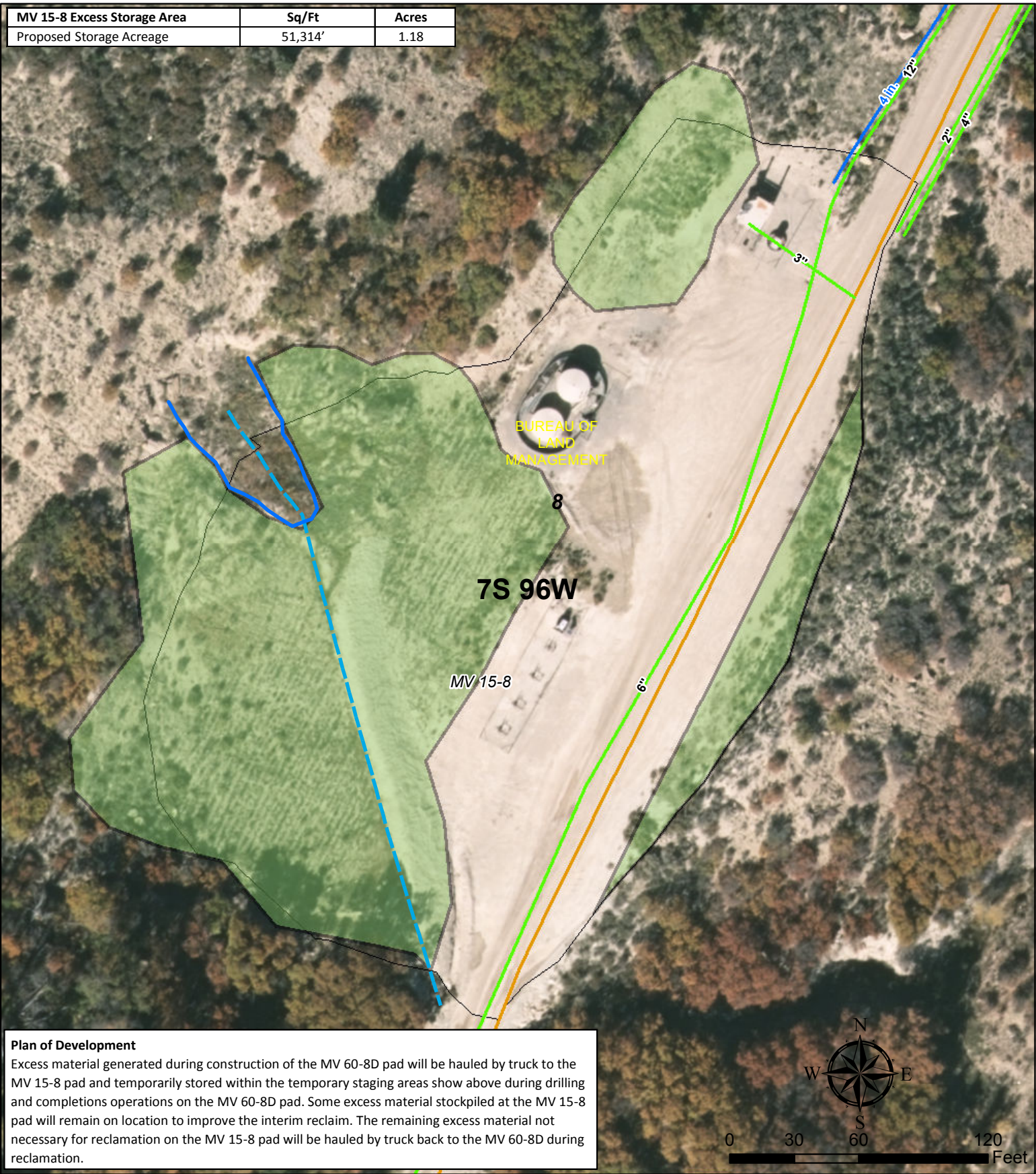


MV 15-8 Excess Storage Area	Sq/Ft	Acres
Proposed Storage Acreage	51,314'	1.18



Plan of Development

Excess material generated during construction of the MV 60-8D pad will be hauled by truck to the MV 15-8 pad and temporarily stored within the temporary staging areas show above during drilling and completions operations on the MV 60-8D pad. Some excess material stockpiled at the MV 15-8 pad will remain on location to improve the interim reclaim. The remaining excess material not necessary for reclamation on the MV 15-8 pad will be hauled by truck back to the MV 60-8D during reclamation.

- Legend**
- Excess Stockpile
 - Spring Buffer
 - Spring Drainage
 - Existing Gas Pipeline
 - Existing Water Pipeline
 - Parcel Ownership
 - Existing Road
 - Existing Pad

TEP Rocky Mountain LLC

MV 15-8 Pad Excess Stockpiles

T7S R96W, Section 8

July 2, 2018

