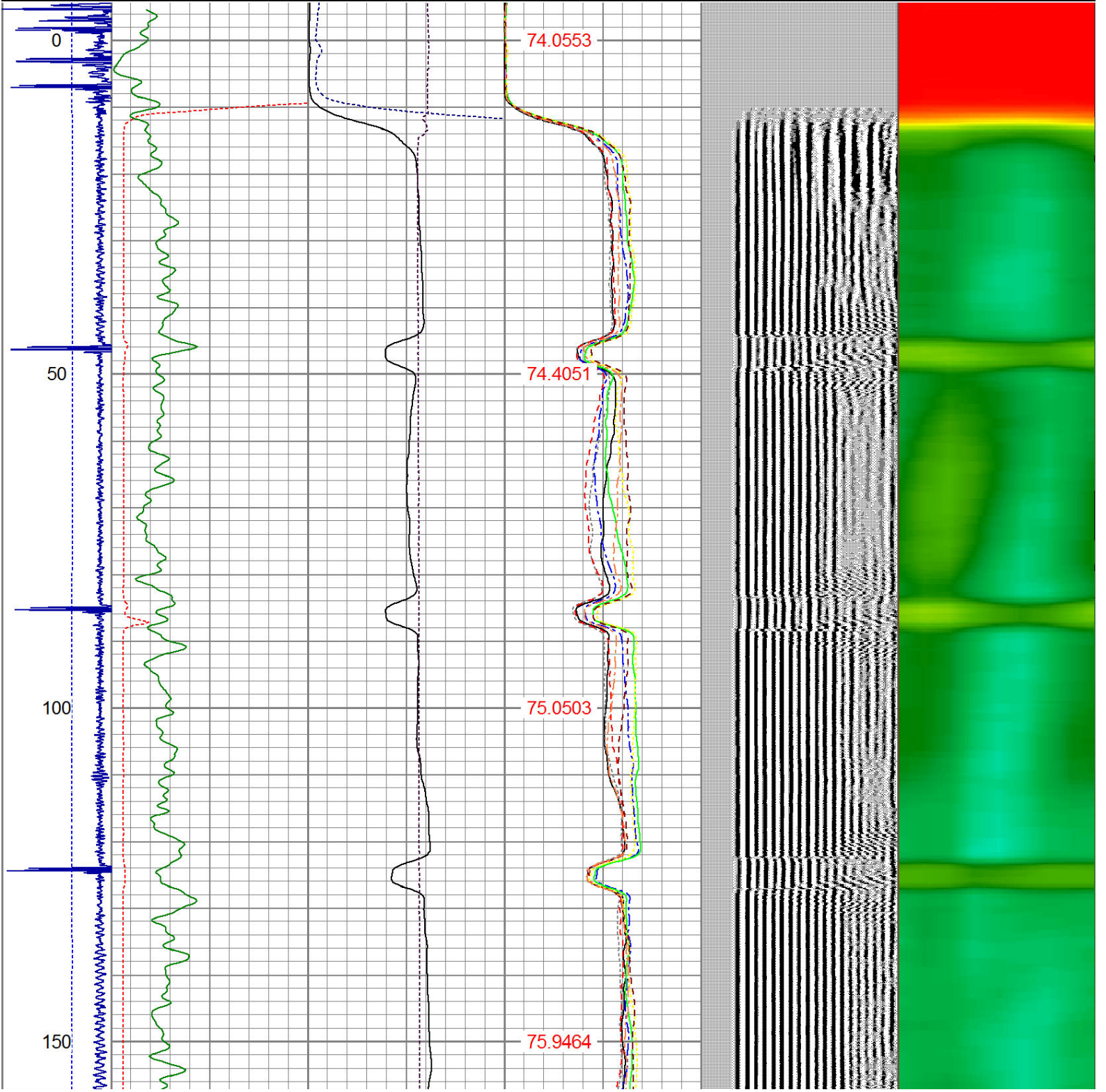
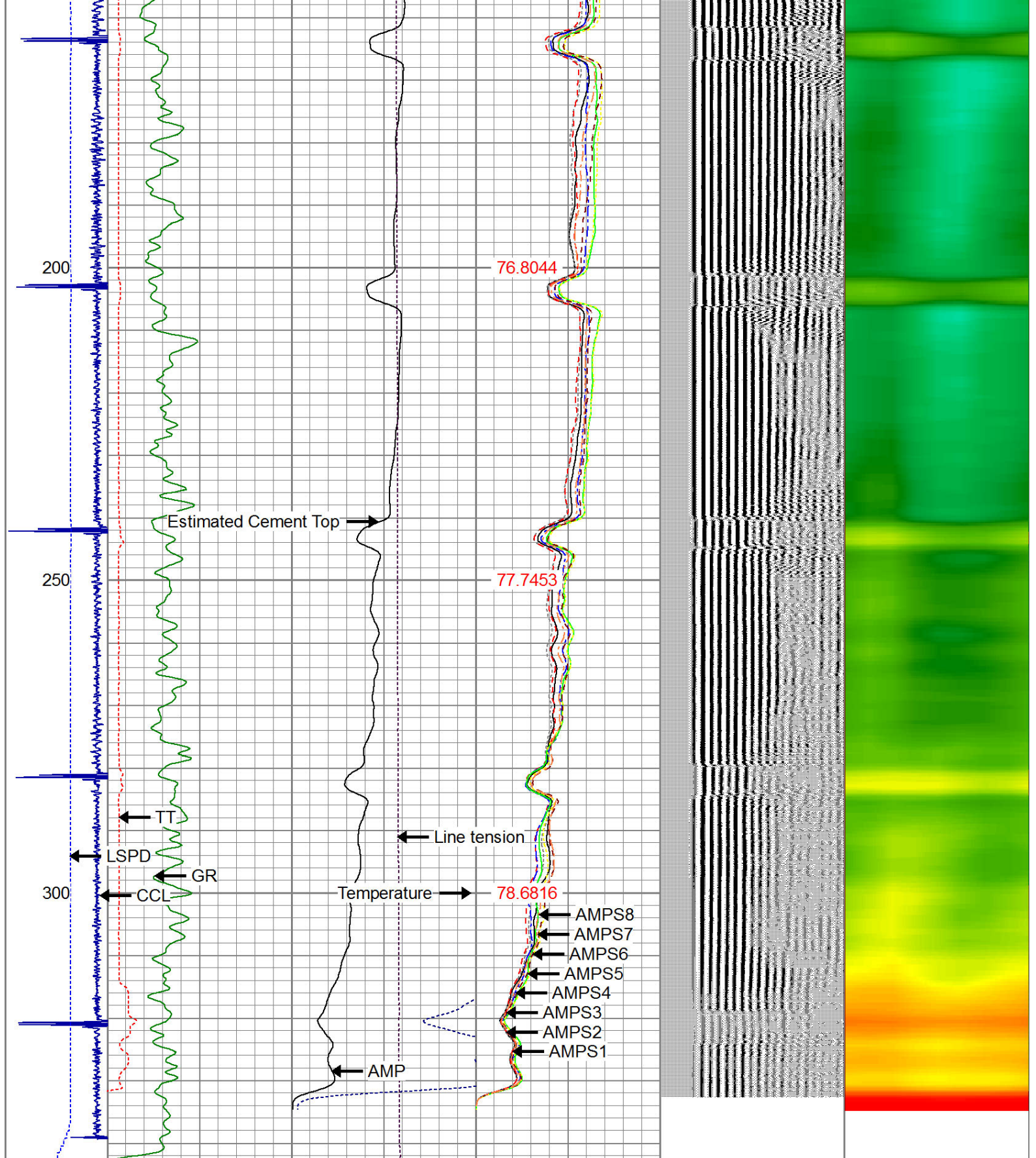


Dataset: walker shands 6-18.db: field/well/run1/pass2  
 Total Length: 17.13 ft  
 Total Weight: 165.00 lb  
 O.D. 2.75 in

Database File: walker shands 6-18.db  
 Dataset Pathname: pass2  
 Presentation Format: ips\_rbt

-9	CCL	1	200	TT (usec)	1100	0	AMP (mV)	100	0	AMPS1	100	200	VDL	1200	1	Cement Map	8
LSPD			0	GR (GAPI)	200	0	AMPx5 (mV)	20	0	AMPS2	100				1		100
(ft/min)			200	GR (GAPI)	400		Line tension		0	AMPS3	100						
-250	250					-1000	(lb)	1000	0	AMPS4	100						
									0	AMPS5	100						
									0	AMPS6	100						
									0	AMPS7	100						
									0	AMPS8	100						
										IntTemp							
										(degF)							





-9	CCL	1	200	TT (usec)	1100	0	AMP (mV)	100	0	AMPS1	100	200	VDL	1200	1	Cement Map	8
	LSPD		0	GR (GAPI)	200	0	AMPx5 (mV)	20	0	AMPS2	100				1		100
	(ft/min)		200	GR (GAPI)	400		Line tension		0	AMPS3	100						
-250	250					-1000	(lb)	1000	0	AMPS4	100						
									0	AMPS5	100						
									0	AMPS6	100						
									0	AMPS7	100						
									0	AMPS8	100						

0	AMPS8	100
IntTemp		
(degF)		

Calibration Report

Database File: walker shands 6-18.db  
 Dataset Pathname: pass2  
 Dataset Creation: Thu May 17 12:34:58 2018 by Log SCH 120126

Gamma Ray Calibration Report

Serial Number: 275  
 Tool Model: Probe  
 Performed: Tue Sep 23 07:13:12 2014

Calibrator Value: 100.0 GAPI

Background Reading: 35.0 cps  
 Calibrator Reading: 160.0 cps

Sensitivity: 1.0000 GAPI/cps

Compensated Neutron Calibration Report

Serial Number: 275  
 Tool Model: Probe\_B

CALIBRATION Wed Jul 30 08:47:19 2008

Detector	Readings	Target	Normalization
Short Space	5001.20 cps	0.00 cps	1.0000
Long Space	1029.31 cps	0.00 cps	1.0000

PRE-SURVEY VERIFICATION

Detector	Readings	Measured	Target
1) Short Space	cps		
Long Space	cps	pu	pu
2) Short Space	cps		
Long Space	cps	pu	
3) Short Space	cps		
Long Space	cps	pu	

POST-SURVEY VERIFICATION

Detector	Readings	Measured	Target
1) Short Space	cps		
Long Space	cps	pu	pu
2) Short Space	cps		
Long Space	cps	pu	pu
3) Short Space	cps		
Long Space	cps	pu	pu

Segmented Cement Bond Log Calibration Report

Serial Number: Base  
 Tool Model: Probe

Calibration Casing Diameter: 4.500 in  
 Calibration Depth: 6204.677 ft

Master Calibration, performed Wed May 09 11:23:44 2018:

	Raw (v)		Calibrated (mv)		Results	
	Zero	Cal	Zero	Cal	Gain	Offset
3'	-0.002	1.923	0.600	81.196	41.864	0.682
CAL	-0.002	2.083				
5'	-0.002	0.861	0.600	81.196	93.327	0.798
SUM						
S1	-0.001	1.838	0.500	81.000	43.761	0.558
S2	-0.001	1.854	0.500	81.000	43.383	0.554
S3	-0.001	1.890	0.500	81.000	42.561	0.555
S4	-0.001	1.910	0.500	81.000	42.104	0.562
S5	-0.002	1.961	0.500	81.000	41.008	0.572
S6	-0.002	1.970	0.500	81.000	40.819	0.567
S7	-0.002	1.915	0.500	81.000	41.986	0.581
S8	-0.002	1.866	0.500	81.000	43.084	0.589

Internal Reference Calibration, performed Tue Jun 05 07:53:42 2012:

	Raw (v)		Calibrated (v)		Results	
	Zero	Cal	Zero	Cal	Gain	Offset
CAL	0.000	0.000	-0.002	2.083	1.000	0.000

Air Zero Calibration, performed Wed May 09 10:06:46 2018:

	Raw (v)		Calibrated (v)		Results	
	Zero		Zero		Offset	
3'	0.000		0.000		0.000	
5'	0.000		0.000		0.000	
SUM						
S1	0.000		0.000		0.000	
S2	0.000		0.000		0.000	
S3	0.000		0.000		0.000	
S4	0.000		0.000		0.000	
S5	0.000		0.000		0.000	
S6	0.000		0.000		0.000	
S7	0.000		0.000		0.000	
S8	0.000		0.000		0.000	



Company SRC ENERGY INC.  
 Well WALKER SHANDS 6-18  
 Field WATTENBERG  
 County WELD  
 State CO