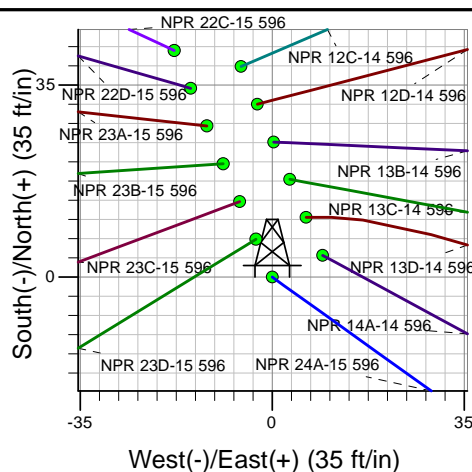
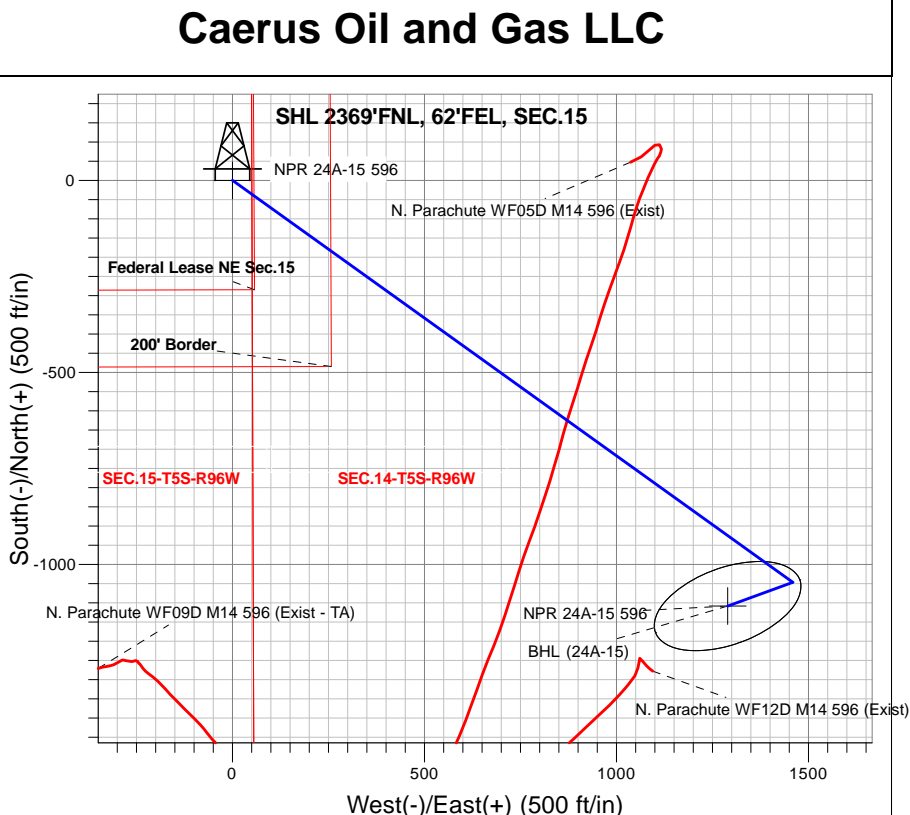
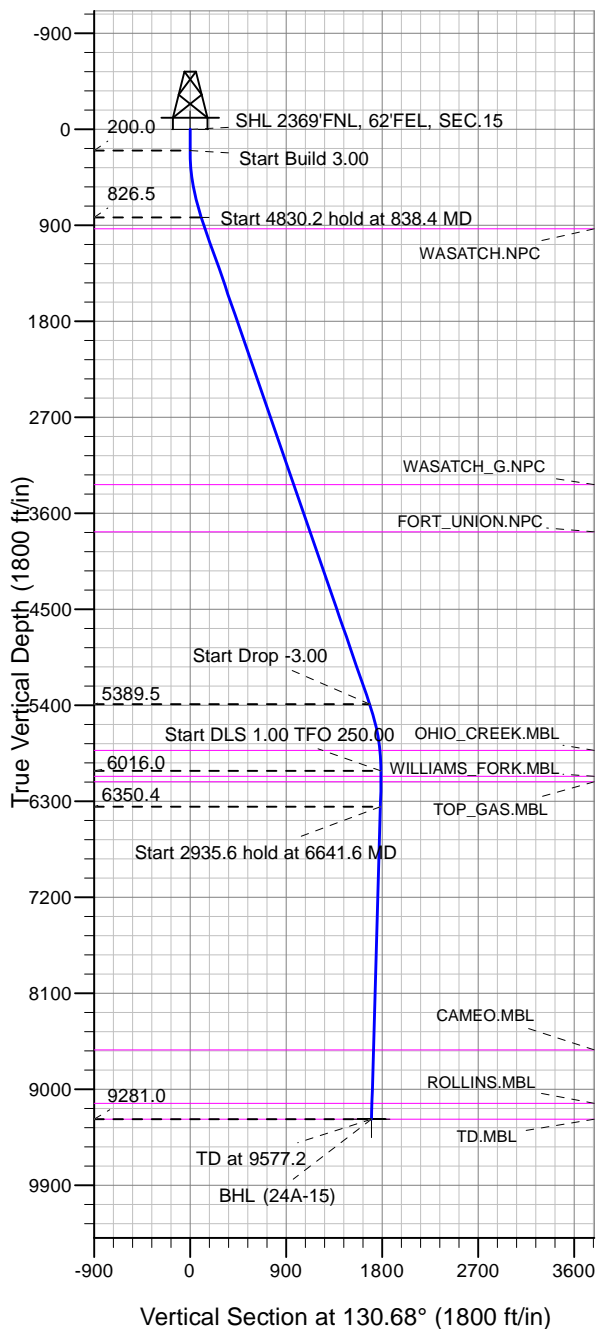


Well Name: **NPR 24A-15 596**
 Surface Location: NPR H15 596 North Pad Sec.15-T5S-R96W
 NAD 1927 - Western US , Universal Transverse Mercator (US Survey Feet)
 Zone 12N (114 W to 108 W)
 Ground Elevation: 6429.0
 +N/-S+E/-W Northing Easting Latitude Longitude Slot
 0.0 0.0 14398942.83 2444322.78 39.615855 -108.145658
 Original Well Elev WELL @ 6453.0ft (Original Well Elev)



NPR 24A-15 596
 Plan #2 (6-14-18)
 11:38, June 14 2018



Azimuths to True North
 Magnetic North: 9.58°
 Magnetic Field
 Strength: 51466.2snT
 Dip Angle: 65.82°
 Date: 6/14/2018
 Model: HDGM

DESIGN TARGET DETAILS

Name	TVD	+N/-S	+E/-W	Latitude	Longitude	Shape
SHL 2369'FNL, 62'FEL, SEC.15	1.0	0.0	0.0	39.615855	-108.145658	Point
BHL (24A-15)	9281.0	-1108.4	1289.4	39.612812	-108.141082	Ellipse (Radii: L200.0 W100.0)

SECTION DETAILS

Sec	MD	Inc	Azi	TVD	+N/-S	+E/-W	Dleg	TFace	Vsect	Target
1	0.0	0.00	0.00	0.0	0.0	0.0	0.00	0.00	0.0	
2	200.0	0.00	0.00	200.0	0.0	0.0	0.00	0.00	0.0	
3	838.4	19.15	125.64	826.5	-61.6	85.9	3.00	125.64	105.3	
4	5668.6	19.15	125.64	5389.5	-984.9	1373.7	0.00	0.00	1683.8	
5	6307.0	0.00	0.00	6016.0	-1046.5	1459.6	3.00	180.00	1789.0	
6	6641.6	3.35	250.00	6350.4	-1049.8	1450.4	1.00	250.00	1784.3	
7	9577.2	3.35	250.00	9281.0	-1108.4	1289.4	0.00	0.00	1700.4	BHL (24A-15)



Caerus Oil and Gas LLC

SEC.15-T5S-R96W

NPR H15 596 North Pad Sec.15-T5S-R96W

NPR 24A-15 596

Wellbore #1

Plan: Plan #2 (6-14-18)

Standard Planning Report

14 June, 2018

Database:	US_EDM	Local Co-ordinate Reference:	Well NPR 24A-15 596
Company:	Caerus Oil and Gas LLC	TVD Reference:	WELL @ 6453.0ft (Original Well Elev)
Project:	SEC.15-T5S-R96W	MD Reference:	WELL @ 6453.0ft (Original Well Elev)
Site:	NPR H15 596 North Pad Sec.15-T5S-R96W	North Reference:	True
Well:	NPR 24A-15 596	Survey Calculation Method:	Minimum Curvature
Wellbore:	Wellbore #1		
Design:	Plan #2 (6-14-18)		

Project	SEC.15-T5S-R96W, Garfield County, CO		
Map System:	Universal Transverse Mercator (US Survey Feet)	System Datum:	Mean Sea Level
Geo Datum:	NAD 1927 - Western US		Using Well Reference Point
Map Zone:	Zone 12N (114 W to 108 W)		Using geodetic scale factor

Site	NPR H15 596 North Pad Sec.15-T5S-R96W				
Site Position:		Northing:	14,398,987.82 usft	Latitude:	39.615979
From:	Lat/Long	Easting:	2,444,312.67 usft	Longitude:	-108.145689
Position Uncertainty:	0.0 ft	Slot Radius:	13-3/16 "	Grid Convergence:	1.82

Well	NPR 24A-15 596					
Well Position	+N/-S	-45.3 ft	Northing:	14,398,942.83 usft	Latitude:	39.615855
	+E/-W	8.7 ft	Easting:	2,444,322.78 usft	Longitude:	-108.145659
Position Uncertainty		0.0 ft	Wellhead Elevation:	0.0 ft	Ground Level:	6,429.0 ft

Wellbore	Wellbore #1				
Magnetics	Model Name	Sample Date	Declination (°)	Dip Angle (°)	Field Strength (nT)
	HDGM	6/14/2018	9.58	65.82	51,466

Design	Plan #2 (6-14-18)			
Audit Notes:				
Version:	Phase:	PROTOTYPE	Tie On Depth:	0.0
Vertical Section:	Depth From (TVD) (ft)	+N/-S (ft)	+E/-W (ft)	Direction (°)
	0.0	0.0	0.0	130.68

Plan Sections										
Measured Depth (ft)	Inclination (°)	Azimuth (°)	Vertical Depth (ft)	+N/-S (ft)	+E/-W (ft)	Dogleg Rate (°/100usft)	Build Rate (°/100usft)	Turn Rate (°/100usft)	TFO (°)	Target
0.0	0.00	0.00	0.0	0.0	0.0	0.00	0.00	0.00	0.00	
200.0	0.00	0.00	200.0	0.0	0.0	0.00	0.00	0.00	0.00	
838.4	19.15	125.64	826.5	-61.6	85.9	3.00	3.00	0.00	125.64	
5,668.6	19.15	125.64	5,389.5	-984.9	1,373.7	0.00	0.00	0.00	0.00	
6,307.0	0.00	0.00	6,016.0	-1,046.5	1,459.6	3.00	-3.00	0.00	180.00	
6,641.6	3.35	250.00	6,350.4	-1,049.8	1,450.4	1.00	1.00	-32.87	250.00	
9,577.2	3.35	250.00	9,281.0	-1,108.4	1,289.4	0.00	0.00	0.00	0.00	BHL (24A-15)

Database:	US_EDM	Local Co-ordinate Reference:	Well NPR 24A-15 596
Company:	Caerus Oil and Gas LLC	TVD Reference:	WELL @ 6453.0ft (Original Well Elev)
Project:	SEC.15-T5S-R96W	MD Reference:	WELL @ 6453.0ft (Original Well Elev)
Site:	NPR H15 596 North Pad Sec.15-T5S-R96W	North Reference:	True
Well:	NPR 24A-15 596	Survey Calculation Method:	Minimum Curvature
Wellbore:	Wellbore #1		
Design:	Plan #2 (6-14-18)		

Planned Survey									
Measured Depth (ft)	Inclination (°)	Azimuth (°)	Vertical Depth (ft)	+N/-S (ft)	+E/-W (ft)	Vertical Section (ft)	Dogleg Rate (°/100usft)	Build Rate (°/100usft)	Turn Rate (°/100usft)
0.0	0.00	0.00	0.0	0.0	0.0	0.0	0.00	0.00	0.00
1.0	0.00	0.00	1.0	0.0	0.0	0.0	0.00	0.00	0.00
SHL 2369'FNL, 62'FEL, SEC.15									
100.0	0.00	0.00	100.0	0.0	0.0	0.0	0.00	0.00	0.00
200.0	0.00	0.00	200.0	0.0	0.0	0.0	0.00	0.00	0.00
300.0	3.00	125.64	300.0	-1.5	2.1	2.6	3.00	3.00	0.00
400.0	6.00	125.64	399.6	-6.1	8.5	10.4	3.00	3.00	0.00
500.0	9.00	125.64	498.8	-13.7	19.1	23.4	3.00	3.00	0.00
600.0	12.00	125.64	597.1	-24.3	33.9	41.6	3.00	3.00	0.00
700.0	15.00	125.64	694.3	-37.9	52.9	64.8	3.00	3.00	0.00
800.0	18.00	125.64	790.2	-54.5	76.0	93.1	3.00	3.00	0.00
838.4	19.15	125.64	826.5	-61.6	85.9	105.3	3.00	3.00	0.00
900.0	19.15	125.64	884.8	-73.4	102.3	125.4	0.00	0.00	0.00
950.0	19.15	125.64	932.0	-82.9	115.7	141.8	0.00	0.00	0.00
WASATCH.NPC									
1,000.0	19.15	125.64	979.2	-92.5	129.0	158.1	0.00	0.00	0.00
1,100.0	19.15	125.64	1,073.7	-111.6	155.7	190.8	0.00	0.00	0.00
1,200.0	19.15	125.64	1,168.2	-130.7	182.3	223.5	0.00	0.00	0.00
1,300.0	19.15	125.64	1,262.6	-149.8	209.0	256.1	0.00	0.00	0.00
1,400.0	19.15	125.64	1,357.1	-168.9	235.6	288.8	0.00	0.00	0.00
1,500.0	19.15	125.64	1,451.6	-188.1	262.3	321.5	0.00	0.00	0.00
1,600.0	19.15	125.64	1,546.0	-207.2	289.0	354.2	0.00	0.00	0.00
1,700.0	19.15	125.64	1,640.5	-226.3	315.6	386.9	0.00	0.00	0.00
1,800.0	19.15	125.64	1,735.0	-245.4	342.3	419.5	0.00	0.00	0.00
1,900.0	19.15	125.64	1,829.4	-264.5	368.9	452.2	0.00	0.00	0.00
2,000.0	19.15	125.64	1,923.9	-283.6	395.6	484.9	0.00	0.00	0.00
2,100.0	19.15	125.64	2,018.4	-302.8	422.3	517.6	0.00	0.00	0.00
2,200.0	19.15	125.64	2,112.8	-321.9	448.9	550.3	0.00	0.00	0.00
2,300.0	19.15	125.64	2,207.3	-341.0	475.6	582.9	0.00	0.00	0.00
2,400.0	19.15	125.64	2,301.8	-360.1	502.3	615.6	0.00	0.00	0.00
2,500.0	19.15	125.64	2,396.2	-379.2	528.9	648.3	0.00	0.00	0.00
2,600.0	19.15	125.64	2,490.7	-398.3	555.6	681.0	0.00	0.00	0.00
2,700.0	19.15	125.64	2,585.2	-417.4	582.2	713.6	0.00	0.00	0.00
2,800.0	19.15	125.64	2,679.6	-436.6	608.9	746.3	0.00	0.00	0.00
2,900.0	19.15	125.64	2,774.1	-455.7	635.6	779.0	0.00	0.00	0.00
3,000.0	19.15	125.64	2,868.5	-474.8	662.2	811.7	0.00	0.00	0.00
3,100.0	19.15	125.64	2,963.0	-493.9	688.9	844.4	0.00	0.00	0.00
3,200.0	19.15	125.64	3,057.5	-513.0	715.5	877.0	0.00	0.00	0.00
3,300.0	19.15	125.64	3,151.9	-532.1	742.2	909.7	0.00	0.00	0.00
3,400.0	19.15	125.64	3,246.4	-551.3	768.9	942.4	0.00	0.00	0.00
3,490.6	19.15	125.64	3,332.0	-568.6	793.0	972.0	0.00	0.00	0.00
WASATCH_G.NPC									
3,500.0	19.15	125.64	3,340.9	-570.4	795.5	975.1	0.00	0.00	0.00
3,600.0	19.15	125.64	3,435.3	-589.5	822.2	1,007.8	0.00	0.00	0.00
3,700.0	19.15	125.64	3,529.8	-608.6	848.8	1,040.4	0.00	0.00	0.00
3,800.0	19.15	125.64	3,624.3	-627.7	875.5	1,073.1	0.00	0.00	0.00
3,900.0	19.15	125.64	3,718.7	-646.8	902.2	1,105.8	0.00	0.00	0.00
3,958.5	19.15	125.64	3,774.0	-658.0	917.8	1,124.9	0.00	0.00	0.00
FORT_UNION.NPC									
4,000.0	19.15	125.64	3,813.2	-666.0	928.8	1,138.5	0.00	0.00	0.00
4,100.0	19.15	125.64	3,907.7	-685.1	955.5	1,171.2	0.00	0.00	0.00
4,200.0	19.15	125.64	4,002.1	-704.2	982.2	1,203.8	0.00	0.00	0.00
4,300.0	19.15	125.64	4,096.6	-723.3	1,008.8	1,236.5	0.00	0.00	0.00
4,400.0	19.15	125.64	4,191.1	-742.4	1,035.5	1,269.2	0.00	0.00	0.00

Database:	US_EDM	Local Co-ordinate Reference:	Well NPR 24A-15 596
Company:	Caerus Oil and Gas LLC	TVD Reference:	WELL @ 6453.0ft (Original Well Elev)
Project:	SEC.15-T5S-R96W	MD Reference:	WELL @ 6453.0ft (Original Well Elev)
Site:	NPR H15 596 North Pad Sec.15-T5S-R96W	North Reference:	True
Well:	NPR 24A-15 596	Survey Calculation Method:	Minimum Curvature
Wellbore:	Wellbore #1		
Design:	Plan #2 (6-14-18)		

Planned Survey									
Measured Depth (ft)	Inclination (°)	Azimuth (°)	Vertical Depth (ft)	+N/-S (ft)	+E/-W (ft)	Vertical Section (ft)	Dogleg Rate (°/100usft)	Build Rate (°/100usft)	Turn Rate (°/100usft)
4,500.0	19.15	125.64	4,285.5	-761.5	1,062.1	1,301.9	0.00	0.00	0.00
4,600.0	19.15	125.64	4,380.0	-780.6	1,088.8	1,334.5	0.00	0.00	0.00
4,700.0	19.15	125.64	4,474.5	-799.8	1,115.5	1,367.2	0.00	0.00	0.00
4,800.0	19.15	125.64	4,568.9	-818.9	1,142.1	1,399.9	0.00	0.00	0.00
4,900.0	19.15	125.64	4,663.4	-838.0	1,168.8	1,432.6	0.00	0.00	0.00
5,000.0	19.15	125.64	4,757.9	-857.1	1,195.4	1,465.3	0.00	0.00	0.00
5,100.0	19.15	125.64	4,852.3	-876.2	1,222.1	1,497.9	0.00	0.00	0.00
5,200.0	19.15	125.64	4,946.8	-895.3	1,248.8	1,530.6	0.00	0.00	0.00
5,300.0	19.15	125.64	5,041.3	-914.5	1,275.4	1,563.3	0.00	0.00	0.00
5,400.0	19.15	125.64	5,135.7	-933.6	1,302.1	1,596.0	0.00	0.00	0.00
5,500.0	19.15	125.64	5,230.2	-952.7	1,328.8	1,628.7	0.00	0.00	0.00
5,600.0	19.15	125.64	5,324.7	-971.8	1,355.4	1,661.3	0.00	0.00	0.00
5,668.6	19.15	125.64	5,389.5	-984.9	1,373.7	1,683.8	0.00	0.00	0.00
5,700.0	18.21	125.64	5,419.2	-990.8	1,381.9	1,693.8	3.00	-3.00	0.00
5,800.0	15.21	125.64	5,515.0	-1,007.5	1,405.2	1,722.4	3.00	-3.00	0.00
5,900.0	12.21	125.64	5,612.1	-1,021.3	1,424.5	1,746.0	3.00	-3.00	0.00
6,000.0	9.21	125.64	5,710.4	-1,032.2	1,439.6	1,764.5	3.00	-3.00	0.00
6,100.0	6.21	125.64	5,809.4	-1,040.0	1,450.5	1,777.9	3.00	-3.00	0.00
6,113.6	5.80	125.64	5,823.0	-1,040.8	1,451.7	1,779.3	3.00	-3.00	0.00
OHIO_CREEK.MBL									
6,200.0	3.21	125.64	5,909.1	-1,044.8	1,457.2	1,786.1	3.00	-3.00	0.00
6,300.0	0.21	125.64	6,009.0	-1,046.5	1,459.6	1,789.0	3.00	-3.00	0.00
6,307.0	0.00	0.00	6,016.0	-1,046.5	1,459.6	1,789.0	3.00	-3.00	0.00
6,357.0	0.50	250.00	6,066.0	-1,046.6	1,459.4	1,788.9	1.00	1.00	0.00
WILLIAMS_FORK.MBL									
6,400.0	0.93	250.00	6,109.0	-1,046.8	1,458.9	1,788.7	1.00	1.00	0.00
6,407.0	1.00	250.00	6,116.0	-1,046.8	1,458.8	1,788.6	1.00	1.00	0.00
TOP_GAS.MBL									
6,500.0	1.93	250.00	6,209.0	-1,047.6	1,456.5	1,787.4	1.00	1.00	0.00
6,600.0	2.93	250.00	6,308.9	-1,049.1	1,452.6	1,785.4	1.00	1.00	0.00
6,641.6	3.35	250.00	6,350.4	-1,049.8	1,450.4	1,784.3	1.00	1.00	0.00
6,700.0	3.35	250.00	6,408.8	-1,051.0	1,447.2	1,782.6	0.00	0.00	0.00
6,800.0	3.35	250.00	6,508.6	-1,053.0	1,441.7	1,779.7	0.00	0.00	0.00
6,900.0	3.35	250.00	6,608.4	-1,055.0	1,436.2	1,776.9	0.00	0.00	0.00
7,000.0	3.35	250.00	6,708.2	-1,057.0	1,430.8	1,774.0	0.00	0.00	0.00
7,100.0	3.35	250.00	6,808.1	-1,059.0	1,425.3	1,771.2	0.00	0.00	0.00
7,200.0	3.35	250.00	6,907.9	-1,061.0	1,419.8	1,768.3	0.00	0.00	0.00
7,300.0	3.35	250.00	7,007.7	-1,063.0	1,414.3	1,765.4	0.00	0.00	0.00
7,400.0	3.35	250.00	7,107.6	-1,065.0	1,408.8	1,762.6	0.00	0.00	0.00
7,500.0	3.35	250.00	7,207.4	-1,067.0	1,403.3	1,759.7	0.00	0.00	0.00
7,600.0	3.35	250.00	7,307.2	-1,069.0	1,397.9	1,756.9	0.00	0.00	0.00
7,700.0	3.35	250.00	7,407.0	-1,071.0	1,392.4	1,754.0	0.00	0.00	0.00
7,800.0	3.35	250.00	7,506.9	-1,073.0	1,386.9	1,751.1	0.00	0.00	0.00
7,900.0	3.35	250.00	7,606.7	-1,075.0	1,381.4	1,748.3	0.00	0.00	0.00
8,000.0	3.35	250.00	7,706.5	-1,077.0	1,375.9	1,745.4	0.00	0.00	0.00
8,100.0	3.35	250.00	7,806.4	-1,079.0	1,370.4	1,742.6	0.00	0.00	0.00
8,200.0	3.35	250.00	7,906.2	-1,080.9	1,364.9	1,739.7	0.00	0.00	0.00
8,300.0	3.35	250.00	8,006.0	-1,082.9	1,359.5	1,736.9	0.00	0.00	0.00
8,400.0	3.35	250.00	8,105.9	-1,084.9	1,354.0	1,734.0	0.00	0.00	0.00
8,500.0	3.35	250.00	8,205.7	-1,086.9	1,348.5	1,731.1	0.00	0.00	0.00
8,600.0	3.35	250.00	8,305.5	-1,088.9	1,343.0	1,728.3	0.00	0.00	0.00
8,700.0	3.35	250.00	8,405.3	-1,090.9	1,337.5	1,725.4	0.00	0.00	0.00
8,800.0	3.35	250.00	8,505.2	-1,092.9	1,332.0	1,722.6	0.00	0.00	0.00

Database:	US_EDM	Local Co-ordinate Reference:	Well NPR 24A-15 596
Company:	Caerus Oil and Gas LLC	TVD Reference:	WELL @ 6453.0ft (Original Well Elev)
Project:	SEC.15-T5S-R96W	MD Reference:	WELL @ 6453.0ft (Original Well Elev)
Site:	NPR H15 596 North Pad Sec.15-T5S-R96W	North Reference:	True
Well:	NPR 24A-15 596	Survey Calculation Method:	Minimum Curvature
Wellbore:	Wellbore #1		
Design:	Plan #2 (6-14-18)		

Planned Survey									
Measured Depth (ft)	Inclination (°)	Azimuth (°)	Vertical Depth (ft)	+N/-S (ft)	+E/-W (ft)	Vertical Section (ft)	Dogleg Rate (°/100usft)	Build Rate (°/100usft)	Turn Rate (°/100usft)
8,900.0	3.35	250.00	8,605.0	-1,094.9	1,326.6	1,719.7	0.00	0.00	0.00
8,926.0	3.35	250.00	8,631.0	-1,095.4	1,325.1	1,719.0	0.00	0.00	0.00
CAMEO.MBL									
9,000.0	3.35	250.00	8,704.8	-1,096.9	1,321.1	1,716.9	0.00	0.00	0.00
9,100.0	3.35	250.00	8,804.7	-1,098.9	1,315.6	1,714.0	0.00	0.00	0.00
9,200.0	3.35	250.00	8,904.5	-1,100.9	1,310.1	1,711.1	0.00	0.00	0.00
9,300.0	3.35	250.00	9,004.3	-1,102.9	1,304.6	1,708.3	0.00	0.00	0.00
9,400.0	3.35	250.00	9,104.1	-1,104.9	1,299.1	1,705.4	0.00	0.00	0.00
9,426.9	3.35	250.00	9,131.0	-1,105.4	1,297.7	1,704.7	0.00	0.00	0.00
ROLLINS.MBL									
9,500.0	3.35	250.00	9,204.0	-1,106.9	1,293.6	1,702.6	0.00	0.00	0.00
9,577.2	3.35	250.00	9,281.0	-1,108.4	1,289.4	1,700.4	0.00	0.00	0.00
TD.MBL - BHL (24A-15)									

Design Targets									
Target Name - hit/miss target - Shape	Dip Angle (°)	Dip Dir. (°)	TVD (ft)	+N/-S (ft)	+E/-W (ft)	Northing (usft)	Easting (usft)	Latitude	Longitude
SHL 2369'FNL, 62'FEL, - plan hits target center - Point	0.00	0.00	1.0	0.0	0.0	14,398,942.83	2,444,322.78	39.615855	-108.145659
BHL (24A-15) - plan hits target center - Ellipse (radii L200.0 W100.0 on 250.00 azi)	0.00	0.00	9,281.0	-1,108.4	1,289.4	14,397,875.56	2,445,647.21	39.612812	-108.141082

Formations						
Measured Depth (ft)	Vertical Depth (ft)	Name	Lithology	Dip (°)	Dip Direction (°)	
950.0	932.0	WASATCH.NPC		0.00		
3,490.6	3,332.0	WASATCH_G.NPC		0.00		
3,958.5	3,774.0	FORT_UNION.NPC		0.00		
6,113.6	5,823.0	OHIO_CREEK.MBL		0.00		
6,357.0	6,066.0	WILLIAMS_FORK.MBL		0.00		
6,407.0	6,116.0	TOP_GAS.MBL		0.00		
8,926.0	8,631.0	CAMEO.MBL		0.00		
9,426.9	9,131.0	ROLLINS.MBL		0.00		
9,577.2	9,281.0	TD.MBL		0.00		



Caerus Oil and Gas LLC

SEC.15-T5S-R96W

NPR H15 596 North Pad Sec.15-T5S-R96W

NPR 24A-15 596

Wellbore #1

Plan #2 (6-14-18)

Anticollision Report

14 June, 2018

Company:	Caerus Oil and Gas LLC	Local Co-ordinate Reference:	Well NPR 24A-15 596
Project:	SEC.15-T5S-R96W	TVD Reference:	WELL @ 6453.0ft (Original Well Elev)
Reference Site:	NPR H15 596 North Pad Sec.15-T5S-R96W	MD Reference:	WELL @ 6453.0ft (Original Well Elev)
Site Error:	0.0 ft	North Reference:	True
Reference Well:	NPR 24A-15 596	Survey Calculation Method:	Minimum Curvature
Well Error:	0.0 ft	Output errors are at	2.00 sigma
Reference Wellbore	Wellbore #1	Database:	US_EDM
Reference Design:	Plan #2 (6-14-18)	Offset TVD Reference:	Offset Datum

Reference	Plan #2 (6-14-18)		
Filter type:	NO GLOBAL FILTER: Using user defined selection & filtering criteria		
Interpolation Method:	Stations	Error Model:	ISCWSA
Depth Range:	Unlimited	Scan Method:	Closest Approach 3D
Results Limited by:	Maximum center-center distance of 800.0 ft	Error Surface:	Elliptical Conic
Warning Levels Evaluated at:	2.00 Sigma	Casing Method:	Not applied

Survey Tool Program		Date	6/13/2018		
From (ft)	To (ft)	Survey (Wellbore)	Tool Name	Description	
0.0	9,577.0	Plan #2 (6-14-18) (Wellbore #1)	MWD	MWD - Standard	

Summary						
Site Name	Reference Measured Depth (ft)	Offset Measured Depth (ft)	Distance Between Centres (ft)	Distance Between Ellipses (ft)	Separation Factor	Warning
Offset Well - Wellbore - Design						
Existing Wells Sec.14-T5S-R96W						
N. Parachute WF05D M14 596 (Exist) - Wellbore #1 - We	3,929.4	3,897.6	52.2	11.5	1.282	Level 3, CC, ES, SF
N. Parachute WF09D M14 596 (Exist - TA) - Wellbore #1						Out of range
N. Parachute WF10D M14 596 (Exist - IJ) - Wellbore #1						Out of range
N. Parachute WF12D M14 596 (Exist) - Wellbore #1 - We	9,577.2	9,210.0	258.2	199.1	4.370	CC, ES, SF
Existing Wells Sec.15-T5S-R96W						
N. Parachute WF02B A15 596 (P&A) - Wellbore #1 - We						Out of range
N. Parachute WF03D A15 596 (P&A) - Wellbore #1 - We						Out of range
N. Parachute WF14D A15 596 (Exist) - Wellbore #1 - We						Out of range
NPR H15 596 North Pad Sec.15-T5S-R96W						
NPR 12B-14 596 - Wellbore #1 - Plan #1 (12-01-17)	200.0	200.0	46.1	45.4	68.369	CC, ES
NPR 12B-14 596 - Wellbore #1 - Plan #1 (12-01-17)	600.0	591.7	90.8	87.9	31.351	SF
NPR 12C-14 596 - Wellbore #1 - Plan #1 (12-01-17)	200.0	200.0	38.8	38.1	57.559	CC, ES
NPR 12C-14 596 - Wellbore #1 - Plan #1 (12-01-17)	600.0	596.5	74.1	71.3	26.593	SF
NPR 12D-14 596 - Wellbore #1 - Plan #1 (12-01-17)	200.0	200.0	31.6	31.0	46.903	CC, ES
NPR 12D-14 596 - Wellbore #1 - Plan #1 (12-01-17)	500.0	499.2	49.8	47.6	22.796	SF
NPR 13B-14 596 - Wellbore #1 - Plan #2 (6-14-18)	200.0	200.0	24.6	24.0	36.519	CC, ES
NPR 13B-14 596 - Wellbore #1 - Plan #2 (6-14-18)	1,900.0	1,886.0	284.9	265.4	14.610	SF
NPR 13C-14 596 - Wellbore #1 - Plan #2 (6-14-18)	200.0	200.0	18.1	17.4	26.834	CC, ES
NPR 13C-14 596 - Wellbore #1 - Plan #2 (6-14-18)	5,900.0	5,835.9	795.6	736.6	13.485	SF
NPR 13D-14 596 - Wellbore #1 - Plan #2 (6-14-18)	200.0	200.0	12.5	11.8	18.564	CC, ES
NPR 13D-14 596 - Wellbore #1 - Plan #2 (6-14-18)	9,577.2	9,523.7	530.0	461.1	7.691	SF
NPR 14A-14 596 - Wellbore #1 - Plan #2 (6-14-18)	200.0	200.0	10.0	9.3	14.839	CC
NPR 14A-14 596 - Wellbore #1 - Plan #2 (6-14-18)	300.0	299.7	10.3	9.2	9.304	ES
NPR 14A-14 596 - Wellbore #1 - Plan #2 (6-14-18)	1,400.0	1,397.2	44.8	32.4	3.613	SF
NPR 22C-15 596 - Wellbore #1 - Plan #1 (12-01-17)	200.0	200.0	45.0	44.3	66.741	CC, ES
NPR 22C-15 596 - Wellbore #1 - Plan #1 (12-01-17)	400.0	394.5	62.8	61.0	36.508	SF
NPR 22D-15 596 - Wellbore #1 - Plan #1 (12-01-17)	200.0	200.0	37.5	36.8	55.612	CC, ES
NPR 22D-15 596 - Wellbore #1 - Plan #1 (12-01-17)	400.0	397.8	48.6	47.0	29.004	SF
NPR 23A-15 596 - Wellbore #1 - Plan #1 (12-01-17)	200.0	200.0	30.0	29.3	44.499	CC, ES
NPR 23A-15 596 - Wellbore #1 - Plan #1 (12-01-17)	400.0	399.6	39.3	37.7	23.505	SF
NPR 23B-15 596 - Wellbore #1 - Plan #1 (12-01-17)	200.0	200.0	22.5	21.8	33.370	CC, ES
NPR 23B-15 596 - Wellbore #1 - Plan #1 (12-01-17)	400.0	397.3	38.1	36.3	22.121	SF
NPR 23C-15 596 - Wellbore #1 - Plan #2 (6-14-18)	200.0	200.0	15.0	14.3	22.241	CC, ES
NPR 23C-15 596 - Wellbore #1 - Plan #2 (6-14-18)	300.0	300.0	17.3	16.1	14.982	SF
NPR 23D-15 596 - Wellbore #1 - Plan #1 (12-01-17)	200.0	200.0	7.5	6.8	11.112	CC, ES

CC - Min centre to center distance or convergent point, SF - min separation factor, ES - min ellipse separation

Company:	Caerus Oil and Gas LLC	Local Co-ordinate Reference:	Well NPR 24A-15 596
Project:	SEC.15-T5S-R96W	TVD Reference:	WELL @ 6453.0ft (Original Well Elev)
Reference Site:	NPR H15 596 North Pad Sec.15-T5S-R96W	MD Reference:	WELL @ 6453.0ft (Original Well Elev)
Site Error:	0.0 ft	North Reference:	True
Reference Well:	NPR 24A-15 596	Survey Calculation Method:	Minimum Curvature
Well Error:	0.0 ft	Output errors are at	2.00 sigma
Reference Wellbore	Wellbore #1	Database:	US_EDM
Reference Design:	Plan #2 (6-14-18)	Offset TVD Reference:	Offset Datum

Summary

Site Name	Reference	Offset	Distance		Separation	Warning
	Measured Depth (ft)	Measured Depth (ft)	Between Centres (ft)	Between Ellipses (ft)		
Offset Well - Wellbore - Design						
NPR H15 596 North Pad Sec.15-T5S-R96W						
NPR 23D-15 596 - Wellbore #1 - Plan #1 (12-01-17)	300.0	300.0	9.8	8.7	8.496	SF
NPR H15 596 South Pad Sec.15-T5S-R96W						
NPR 11A-14 596 - Wellbore #1 - Plan #1 (11-30-17)	200.0	200.0	308.8	308.1	457.944	CC, ES
NPR 11A-14 596 - Wellbore #1 - Plan #1 (11-30-17)	1,700.0	1,476.1	781.3	770.1	69.523	SF
NPR 11B-14 596 - Wellbore #1 - Plan #1 (11-30-17)	200.0	200.0	301.4	300.7	446.922	CC, ES
NPR 11B-14 596 - Wellbore #1 - Plan #1 (11-30-17)	1,600.0	1,405.6	780.9	768.6	63.859	SF
NPR 11C-14 596 - Wellbore #1 - Plan #1 (11-30-17)	200.0	200.0	293.8	293.1	435.669	CC, ES
NPR 11C-14 596 - Wellbore #1 - Plan #1 (11-30-17)	1,700.0	1,537.3	767.8	754.6	58.190	SF
NPR 11D-14 596 - Wellbore #1 - Plan #1 (11-30-17)	200.0	200.0	286.3	285.7	424.628	CC, ES
NPR 11D-14 596 - Wellbore #1 - Plan #1 (11-30-17)	1,900.0	1,761.0	790.0	774.7	51.597	SF
NPR 12A-14 596 - Wellbore #1 - Plan #1 (11-30-17)	200.0	200.0	278.8	278.2	413.536	CC, ES
NPR 12A-14 596 - Wellbore #1 - Plan #1 (11-30-17)	2,100.0	1,989.2	798.4	781.0	45.754	SF
NPR 15B-11 596 - Wellbore #1 - Plan #1 (11-30-17)	200.0	200.0	331.3	330.6	491.318	CC, ES
NPR 15B-11 596 - Wellbore #1 - Plan #1 (11-30-17)	1,400.0	1,148.6	757.4	748.3	83.796	SF
NPR 15C-11 596 - Wellbore #1 - Plan #1 (11-30-17)	200.0	200.0	323.8	323.1	480.195	CC, ES
NPR 15C-11 596 - Wellbore #1 - Plan #1 (11-30-17)	1,500.0	1,254.7	766.8	757.1	78.669	SF
NPR 15D-11 596 - Wellbore #1 - Plan #1 (11-30-17)	200.0	200.0	316.3	315.6	469.037	CC, ES
NPR 15D-11 596 - Wellbore #1 - Plan #1 (11-30-17)	1,600.0	1,363.6	774.9	764.5	73.994	SF
NPR 21A-15 596 - Wellbore #1 - Plan #1 (11-30-17)	200.0	200.0	316.1	315.5	468.839	CC, ES
NPR 21A-15 596 - Wellbore #1 - Plan #1 (11-30-17)	1,000.0	858.6	528.9	524.0	106.717	SF
NPR 21B-15 596 - Wellbore #1 - Plan #1 (11-30-17)	200.0	200.0	308.7	308.0	457.743	CC, ES
NPR 21B-15 596 - Wellbore #1 - Plan #1 (11-30-17)	1,000.0	882.5	500.2	495.3	101.298	SF
NPR 21C-15 596 - Wellbore #1 - Plan #1 (11-30-17)	200.0	200.0	301.1	300.5	446.597	CC, ES
NPR 21C-15 596 - Wellbore #1 - Plan #1 (11-30-17)	838.4	728.5	456.8	452.6	109.204	SF
NPR 21D-15 596 - Wellbore #1 - Plan #1 (11-30-17)	200.0	200.0	293.6	292.9	435.435	CC, ES
NPR 21D-15 596 - Wellbore #1 - Plan #1 (11-30-17)	900.0	800.0	459.5	455.0	102.871	SF
NPR 22A-15 596 - Wellbore #1 - Plan #1 (11-30-17)	200.0	200.0	286.2	285.5	424.422	CC, ES
NPR 22A-15 596 - Wellbore #1 - Plan #1 (11-30-17)	900.0	815.0	433.2	428.8	97.636	SF
NPR 22B-10 596 - Wellbore #1 - Plan #1 (11-30-17)	200.0	200.0	278.3	277.6	412.681	CC, ES
NPR 22B-10 596 - Wellbore #1 - Plan #1 (11-30-17)	900.0	836.2	410.6	406.2	92.999	SF
NPR 25C-10 596 - Wellbore #1 - Plan #1 (11-30-17)	200.0	200.0	331.2	330.5	491.146	CC, ES
NPR 25C-10 596 - Wellbore #1 - Plan #1 (11-30-17)	1,200.0	928.8	714.5	708.3	116.980	SF
NPR 25D-10 596 - Wellbore #1 - Plan #1 (11-30-17)	200.0	200.0	323.6	323.0	479.968	CC, ES
NPR 25D-10 596 - Wellbore #1 - Plan #1 (11-30-17)	1,100.0	900.0	617.5	612.0	112.431	SF

Offset Design													Offset Site Error:	0.0 ft
Survey Program: 243-MWD													Offset Well Error:	0.0 ft
Reference		Offset		Semi Major Axis			Distance						Warning	
Measured Depth	Vertical Depth	Measured Depth	Vertical Depth	Reference	Offset	Highside Toolface	Offset Wellbore Centre		Between Centres	Between Ellipses	Minimum Separation	Separation Factor		
(ft)	(ft)	(ft)	(ft)	(ft)	(ft)	(°)	+N/-S (ft)	+E/-W (ft)	(ft)	(ft)	(ft)			
2,600.0	2,490.7	2,823.6	2,649.7	14.8	16.2	49.18	-1,107.7	717.5	787.1	765.7	21.32	36.910		
2,700.0	2,585.2	2,896.6	2,715.8	15.5	16.7	49.56	-1,078.1	727.0	728.8	706.7	22.14	32.913		
2,800.0	2,679.6	2,974.6	2,786.7	16.2	17.3	50.08	-1,047.2	736.8	671.3	648.4	22.98	29.214		
2,900.0	2,774.1	3,061.7	2,865.8	16.9	17.9	50.77	-1,012.3	747.6	613.6	589.7	23.87	25.710		
3,000.0	2,868.5	3,143.5	2,939.7	17.6	18.6	51.40	-979.1	758.9	555.5	530.8	24.75	22.446		
3,100.0	2,963.0	3,223.1	3,011.4	18.3	19.2	52.04	-946.8	770.7	497.6	472.0	25.63	19.417		
3,200.0	3,057.5	3,310.8	3,090.4	19.0	19.9	52.93	-910.9	783.7	439.5	412.9	26.54	16.557		
3,300.0	3,151.9	3,390.3	3,161.7	19.7	20.5	54.00	-877.6	795.3	380.7	353.2	27.43	13.877		
3,400.0	3,246.4	3,473.8	3,236.7	20.4	21.1	55.63	-843.0	807.2	322.2	293.9	28.34	11.370		
3,500.0	3,340.9	3,556.7	3,310.8	21.1	21.8	58.04	-807.5	818.6	262.8	233.5	29.27	8.978		

CC - Min centre to center distance or convergent point, SF - min separation factor, ES - min ellipse separation

Company:	Caerus Oil and Gas LLC	Local Co-ordinate Reference:	Well NPR 24A-15 596
Project:	SEC.15-T5S-R96W	TVD Reference:	WELL @ 6453.0ft (Original Well Elev)
Reference Site:	NPR H15 596 North Pad Sec.15-T5S-R96W	MD Reference:	WELL @ 6453.0ft (Original Well Elev)
Site Error:	0.0 ft	North Reference:	True
Reference Well:	NPR 24A-15 596	Survey Calculation Method:	Minimum Curvature
Well Error:	0.0 ft	Output errors are at	2.00 sigma
Reference Wellbore	Wellbore #1	Database:	US_EDM
Reference Design:	Plan #2 (6-14-18)	Offset TVD Reference:	Offset Datum

Offset Design Existing Wells Sec.14-T5S-R96W - N. Parachute WF05D M14 596 (Exist) - Wellbore #1 - Wellbore #1												Offset Site Error:	0.0 ft
Survey Program: 243-MWD												Offset Well Error:	0.0 ft
Reference		Offset		Semi Major Axis			Distance						Warning
Measured Depth (ft)	Vertical Depth (ft)	Measured Depth (ft)	Vertical Depth (ft)	Reference (ft)	Offset (ft)	Highside Toolface (°)	Offset Wellbore Centre +N/-S (ft)	+E/-W (ft)	Between Centres (ft)	Between Ellipses (ft)	Minimum Separation (ft)	Separation Factor	
3,600.0	3,435.3	3,635.8	3,381.4	21.8	22.4	61.75	-773.5	829.3	203.7	173.5	30.26	6.733	
3,700.0	3,529.8	3,714.8	3,452.1	22.5	23.1	68.48	-739.9	839.4	146.0	114.5	31.54	4.631	
3,800.0	3,624.3	3,793.0	3,522.6	23.2	23.7	82.69	-707.3	848.7	92.7	58.5	34.26	2.707	
3,900.0	3,718.7	3,874.0	3,595.8	23.9	24.3	117.69	-673.9	857.7	55.1	14.8	40.34	1.366	Level 3
3,929.4	3,746.5	3,897.6	3,617.2	24.1	24.5	132.86	-664.0	860.4	52.2	11.5	40.74	1.282	Level 3, CC, ES, SF
4,000.0	3,813.2	3,954.7	3,668.3	24.6	24.9	166.37	-639.8	867.2	67.0	30.3	36.77	1.823	
4,100.0	3,907.7	4,035.0	3,740.0	25.3	25.6	-168.26	-605.2	877.9	114.5	79.9	34.66	3.305	
4,200.0	4,002.1	4,115.5	3,811.8	26.0	26.2	-157.03	-570.5	889.3	170.1	134.8	35.29	4.820	
4,300.0	4,096.6	4,197.2	3,885.2	26.7	26.9	-151.61	-536.4	899.8	227.6	191.5	36.14	6.298	
4,400.0	4,191.1	4,280.6	3,960.8	27.4	27.5	-148.53	-502.4	910.0	285.2	248.2	36.99	7.709	
4,500.0	4,285.5	4,365.2	4,037.6	28.1	28.1	-146.44	-468.7	920.8	342.3	304.4	37.86	9.041	
4,600.0	4,380.0	4,445.5	4,110.4	28.8	28.7	-144.95	-436.7	931.6	399.4	360.7	38.73	10.313	
4,700.0	4,474.5	4,528.2	4,185.4	29.5	29.4	-143.76	-403.6	942.8	456.8	417.2	39.60	11.535	
4,800.0	4,568.9	4,613.0	4,262.6	30.2	30.0	-142.97	-370.3	953.5	513.9	473.4	40.47	12.697	
4,900.0	4,663.4	4,696.6	4,339.1	30.9	30.6	-142.42	-338.1	963.6	570.6	529.2	41.33	13.804	
5,000.0	4,757.9	4,778.7	4,414.0	31.6	31.2	-141.88	-306.2	974.4	627.3	585.1	42.20	14.865	
5,100.0	4,852.3	4,867.6	4,495.0	32.3	31.9	-141.37	-271.8	986.3	683.9	640.8	43.10	15.868	
5,200.0	4,946.8	4,967.8	4,587.3	33.0	32.6	-140.94	-235.0	1,000.1	738.6	694.6	44.04	16.772	
5,300.0	5,041.3	5,061.6	4,674.4	33.7	33.2	-140.73	-202.2	1,012.0	792.3	747.4	44.93	17.634	

Company:	Caerus Oil and Gas LLC	Local Co-ordinate Reference:	Well NPR 24A-15 596
Project:	SEC.15-T5S-R96W	TVD Reference:	WELL @ 6453.0ft (Original Well Elev)
Reference Site:	NPR H15 596 North Pad Sec.15-T5S-R96W	MD Reference:	WELL @ 6453.0ft (Original Well Elev)
Site Error:	0.0 ft	North Reference:	True
Reference Well:	NPR 24A-15 596	Survey Calculation Method:	Minimum Curvature
Well Error:	0.0 ft	Output errors are at	2.00 sigma
Reference Wellbore	Wellbore #1	Database:	US_EDM
Reference Design:	Plan #2 (6-14-18)	Offset TVD Reference:	Offset Datum

Offset Design Existing Wells Sec.14-T5S-R96W - N. Parachute WF12D M14 596 (Exist) - Wellbore #1 - Wellbore #1													Offset Site Error:	0.0 ft
Survey Program: 116-MWD													Offset Well Error:	0.0 ft
Reference		Offset		Semi Major Axis			Distance							Warning
Measured Depth (ft)	Vertical Depth (ft)	Measured Depth (ft)	Vertical Depth (ft)	Reference (ft)	Offset (ft)	Highside Toolface (°)	Offset Wellbore Centre +N/-S (ft)	+E/-W (ft)	Between Centres (ft)	Between Ellipses (ft)	Minimum Separation (ft)	Separation Factor		
4,500.0	4,285.5	4,305.6	4,258.5	28.1	13.7	74.73	-1,496.6	841.9	775.8	738.1	37.62	20.619		
4,600.0	4,380.0	4,400.9	4,352.4	28.8	14.1	76.50	-1,485.5	853.9	751.6	712.9	38.65	19.445		
4,700.0	4,474.5	4,495.5	4,445.6	29.5	14.4	78.33	-1,474.7	866.2	728.1	688.5	39.67	18.355		
4,800.0	4,568.9	4,592.4	4,540.9	30.2	14.8	80.32	-1,463.2	878.8	705.2	664.5	40.69	17.333		
4,900.0	4,663.4	4,684.9	4,632.0	30.9	15.1	82.36	-1,452.2	890.7	683.1	641.4	41.67	16.393		
5,000.0	4,757.9	4,774.6	4,720.4	31.6	15.4	84.48	-1,441.8	901.8	662.4	619.8	42.62	15.543		
5,100.0	4,852.3	4,867.0	4,811.6	32.3	15.8	86.81	-1,431.3	912.8	643.3	599.7	43.55	14.770		
5,200.0	4,946.8	4,957.8	4,901.2	33.0	16.1	89.23	-1,421.2	923.3	625.8	581.3	44.45	14.077		
5,300.0	5,041.3	5,049.4	4,991.7	33.7	16.4	91.76	-1,411.6	933.9	610.1	564.7	45.32	13.461		
5,400.0	5,135.7	5,141.3	5,082.5	34.4	16.7	94.40	-1,402.4	944.3	596.2	550.1	46.15	12.919		
5,500.0	5,230.2	5,239.1	5,179.1	35.1	17.0	97.36	-1,392.3	955.3	583.8	536.8	46.93	12.439		
5,600.0	5,324.7	5,335.5	5,274.3	35.8	17.4	100.43	-1,381.6	966.0	572.5	524.9	47.65	12.016		
5,668.6	5,389.5	5,400.7	5,338.7	36.2	17.6	102.58	-1,374.3	973.3	565.7	517.6	48.10	11.760		
5,700.0	5,419.2	5,429.8	5,367.5	36.4	17.7	103.44	-1,371.0	976.6	562.8	514.5	48.28	11.657		
5,800.0	5,515.0	5,521.2	5,457.7	36.9	18.0	105.92	-1,361.0	986.6	554.3	505.6	48.70	11.381		
5,900.0	5,612.1	5,618.2	5,553.6	37.3	18.3	108.15	-1,350.6	997.2	545.7	496.6	49.05	11.125		
6,000.0	5,710.4	5,706.0	5,640.5	37.6	18.6	109.76	-1,341.6	1,006.1	537.4	488.0	49.35	10.889		
6,100.0	5,809.4	5,794.0	5,727.8	37.9	18.9	111.01	-1,333.5	1,013.7	529.6	480.0	49.60	10.679		
6,200.0	5,909.1	5,890.5	5,823.7	38.0	19.2	111.92	-1,325.1	1,020.9	521.5	471.7	49.81	10.470		
6,307.0	6,016.0	5,994.4	5,926.9	38.1	19.5	-122.02	-1,316.3	1,028.1	511.5	464.9	46.60	10.977		
6,400.0	6,109.0	6,085.1	6,017.1	38.2	19.7	-11.70	-1,308.8	1,034.1	501.5	451.3	50.21	9.988		
6,500.0	6,209.0	6,179.9	6,111.5	38.2	20.0	-11.39	-1,301.4	1,039.9	489.7	439.4	50.36	9.725		
6,600.0	6,308.9	6,274.8	6,205.9	38.3	20.2	-11.09	-1,294.3	1,045.0	477.2	426.7	50.49	9.450		
6,641.6	6,350.4	6,314.2	6,245.2	38.3	20.3	-10.97	-1,291.4	1,046.8	471.7	421.2	50.54	9.333		
6,700.0	6,408.8	6,369.4	6,300.2	38.3	20.4	-10.79	-1,287.6	1,049.2	464.1	413.4	50.67	9.160		
6,800.0	6,508.6	6,463.8	6,394.3	38.3	20.6	-10.43	-1,281.2	1,052.5	451.9	401.1	50.87	8.884		
6,900.0	6,608.4	6,558.3	6,488.6	38.3	20.9	-10.03	-1,275.0	1,054.8	440.9	389.8	51.07	8.632		
7,000.0	6,708.2	6,651.0	6,581.1	38.3	21.1	-9.57	-1,269.3	1,056.1	430.9	379.6	51.26	8.405		
7,100.0	6,808.1	6,750.9	6,680.8	38.4	21.2	-9.09	-1,263.7	1,056.9	421.6	370.2	51.46	8.193		
7,200.0	6,907.9	6,848.8	6,778.6	38.4	21.4	-8.69	-1,258.9	1,057.7	412.8	361.1	51.66	7.991		
7,300.0	7,007.7	6,946.7	6,876.5	38.4	21.6	-8.36	-1,254.8	1,058.4	404.4	352.5	51.88	7.796		
7,400.0	7,107.6	7,044.8	6,974.5	38.5	21.8	-8.10	-1,251.5	1,059.1	396.4	344.3	52.11	7.608		
7,500.0	7,207.4	7,142.9	7,072.6	38.5	22.0	-7.94	-1,249.0	1,059.8	388.9	336.5	52.35	7.429		
7,600.0	7,307.2	7,241.0	7,170.7	38.5	22.1	-7.84	-1,247.1	1,060.3	381.7	329.1	52.59	7.258		
7,700.0	7,407.0	7,339.2	7,268.8	38.6	22.3	-7.80	-1,245.7	1,060.6	375.0	322.1	52.84	7.097		
7,800.0	7,506.9	7,437.3	7,367.0	38.6	22.4	-7.79	-1,244.8	1,060.7	368.7	315.6	53.09	6.944		
7,900.0	7,606.7	7,536.2	7,465.8	38.6	22.6	-7.84	-1,244.3	1,060.6	362.8	309.4	53.36	6.799		
8,000.0	7,706.5	7,636.2	7,565.9	38.7	22.7	-7.94	-1,244.1	1,060.5	356.9	303.3	53.63	6.656		
8,100.0	7,806.4	7,736.3	7,665.9	38.7	22.9	-8.09	-1,244.1	1,060.7	351.0	297.1	53.90	6.512		
8,200.0	7,906.2	7,836.3	7,765.9	38.8	23.0	-8.29	-1,244.4	1,061.1	345.1	290.9	54.19	6.368		
8,300.0	8,006.0	7,936.3	7,865.9	38.8	23.2	-8.55	-1,244.9	1,061.6	339.0	284.6	54.48	6.223		
8,400.0	8,105.9	8,036.3	7,965.9	38.9	23.3	-8.87	-1,245.6	1,062.4	333.0	278.2	54.78	6.078		
8,500.0	8,205.7	8,136.3	8,065.9	38.9	23.5	-9.26	-1,246.6	1,063.3	326.9	271.8	55.09	5.933		
8,600.0	8,305.5	8,236.2	8,165.8	39.0	23.6	-9.71	-1,247.8	1,064.4	320.7	265.3	55.41	5.788		
8,700.0	8,405.3	8,336.1	8,265.7	39.0	23.8	-10.27	-1,249.4	1,065.8	314.5	258.8	55.73	5.644		
8,800.0	8,505.2	8,436.0	8,365.5	39.1	23.9	-10.95	-1,251.4	1,067.5	308.4	252.3	56.07	5.500		
8,900.0	8,605.0	8,535.8	8,465.3	39.1	24.1	-11.76	-1,253.9	1,069.5	302.2	245.8	56.42	5.356		
9,000.0	8,704.8	8,635.6	8,565.0	39.2	24.3	-12.71	-1,256.8	1,071.9	296.1	239.3	56.79	5.214		
9,100.0	8,804.7	8,735.7	8,665.1	39.2	24.4	-13.81	-1,260.2	1,074.5	290.0	232.8	57.17	5.073		
9,200.0	8,904.5	8,836.5	8,765.8	39.3	24.6	-15.06	-1,263.7	1,077.8	283.7	226.2	57.56	4.929		
9,300.0	9,004.3	8,937.2	8,866.3	39.3	24.7	-16.45	-1,267.4	1,081.6	277.2	219.2	57.95	4.782		
9,400.0	9,104.1	9,037.8	8,966.7	39.4	24.9	-18.00	-1,271.2	1,086.0	270.4	212.0	58.36	4.633		

CC - Min centre to center distance or convergent point, SF - min separation factor, ES - min ellipse separation

Company:	Caerus Oil and Gas LLC	Local Co-ordinate Reference:	Well NPR 24A-15 596
Project:	SEC.15-T5S-R96W	TVD Reference:	WELL @ 6453.0ft (Original Well Elev)
Reference Site:	NPR H15 596 North Pad Sec.15-T5S-R96W	MD Reference:	WELL @ 6453.0ft (Original Well Elev)
Site Error:	0.0 ft	North Reference:	True
Reference Well:	NPR 24A-15 596	Survey Calculation Method:	Minimum Curvature
Well Error:	0.0 ft	Output errors are at	2.00 sigma
Reference Wellbore	Wellbore #1	Database:	US_EDM
Reference Design:	Plan #2 (6-14-18)	Offset TVD Reference:	Offset Datum

Offset Design		Existing Wells Sec.14-T5S-R96W - N. Parachute WF12D M14 596 (Exist) - Wellbore #1 - Wellbore #1										Offset Site Error:	0.0 ft
Survey Program: 116-MWD												Offset Well Error:	0.0 ft
Reference		Offset		Semi Major Axis			Distance						Warning
Measured Depth (ft)	Vertical Depth (ft)	Measured Depth (ft)	Vertical Depth (ft)	Reference (ft)	Offset (ft)	Highside Toolface (°)	Offset Wellbore Centre +N/-S (ft)	+E/-W (ft)	Between Centres (ft)	Between Ellipses (ft)	Minimum Separation (ft)	Separation Factor	
9,500.0	9,204.0	9,138.2	9,067.0	39.5	25.1	-19.73	-1,275.1	1,090.9	263.4	204.7	58.77	4.483	
9,577.2	9,281.0	9,210.0	9,138.6	39.5	25.2	-21.06	-1,277.9	1,094.7	258.2	199.1	59.07	4.370 CC, ES, SF	

Company:	Caerus Oil and Gas LLC	Local Co-ordinate Reference:	Well NPR 24A-15 596
Project:	SEC.15-T5S-R96W	TVD Reference:	WELL @ 6453.0ft (Original Well Elev)
Reference Site:	NPR H15 596 North Pad Sec.15-T5S-R96W	MD Reference:	WELL @ 6453.0ft (Original Well Elev)
Site Error:	0.0 ft	North Reference:	True
Reference Well:	NPR 24A-15 596	Survey Calculation Method:	Minimum Curvature
Well Error:	0.0 ft	Output errors are at	2.00 sigma
Reference Wellbore	Wellbore #1	Database:	US_EDM
Reference Design:	Plan #2 (6-14-18)	Offset TVD Reference:	Offset Datum

Offset Design													Offset Site Error:	0.0 ft
Survey Program: 0-MWD													Offset Well Error:	0.0 ft
Reference		Offset		Semi Major Axis			Distance							Warning
Measured Depth (ft)	Vertical Depth (ft)	Measured Depth (ft)	Vertical Depth (ft)	Reference (ft)	Offset (ft)	Highside Toolface (°)	Offset Wellbore Centre +N/-S (ft)	+E/-W (ft)	Between Centres (ft)	Between Ellipses (ft)	Minimum Separation (ft)	Separation Factor		
0.0	0.0	0.0	0.0	0.0	0.0	-10.85	45.3	-8.7	46.1					
100.0	100.0	100.0	100.0	0.1	0.1	-10.85	45.3	-8.7	46.1	45.9	0.22	205.107		
200.0	200.0	200.0	200.0	0.3	0.3	-10.85	45.3	-8.7	46.1	45.4	0.67	68.369 CC, ES		
300.0	300.0	299.1	299.1	0.5	0.6	-135.69	46.6	-6.5	48.9	47.7	1.14	43.007		
400.0	399.6	397.7	397.4	0.8	0.8	-133.74	50.5	0.1	57.3	55.6	1.65	34.756		
500.0	498.8	495.4	494.2	1.1	1.1	-131.46	56.9	10.9	71.2	69.0	2.23	31.986		
600.0	597.1	591.7	589.0	1.4	1.4	-129.36	65.7	25.8	90.8	87.9	2.89	31.351 SF		
700.0	694.3	686.3	681.0	1.9	1.8	-127.59	76.7	44.3	115.7	112.0	3.67	31.528		
800.0	790.2	778.6	769.8	2.4	2.3	-126.08	89.7	66.1	145.9	141.3	4.56	31.972		
838.4	826.5	813.5	803.0	2.7	2.5	-125.56	95.1	75.3	158.8	153.9	4.93	32.185		
900.0	884.8	870.2	856.6	3.1	2.8	-125.15	104.5	91.2	180.5	174.9	5.55	32.502		
1,000.0	979.2	963.8	945.0	3.7	3.4	-124.59	120.2	117.6	215.7	209.1	6.59	32.734		
1,100.0	1,073.7	1,057.3	1,033.4	4.4	4.1	-124.19	135.8	143.9	250.9	243.3	7.65	32.790		
1,200.0	1,168.2	1,150.9	1,121.8	5.1	4.7	-123.89	151.5	170.3	286.2	277.5	8.74	32.736		
1,300.0	1,262.6	1,244.5	1,210.2	5.8	5.3	-123.65	167.1	196.7	321.5	311.6	9.84	32.668		
1,400.0	1,357.1	1,338.0	1,298.6	6.5	5.9	-123.46	182.7	223.1	356.7	345.8	10.95	32.585		
1,500.0	1,451.6	1,431.6	1,387.0	7.2	6.5	-123.31	198.4	249.4	392.0	380.0	12.06	32.499		
1,600.0	1,546.0	1,525.2	1,475.4	7.9	7.2	-123.18	214.0	275.8	427.3	414.1	13.18	32.416		
1,700.0	1,640.5	1,618.7	1,563.8	8.6	7.8	-123.07	229.7	302.2	462.6	448.3	14.30	32.338		
1,800.0	1,735.0	1,712.3	1,652.2	9.3	8.4	-122.97	245.3	328.5	497.9	482.4	15.43	32.265		
1,900.0	1,829.4	1,805.9	1,740.6	10.0	9.0	-122.89	261.0	354.9	533.1	516.6	16.56	32.198		
2,000.0	1,923.9	1,899.4	1,829.0	10.6	9.7	-122.82	276.6	381.3	568.4	550.7	17.69	32.136		
2,100.0	2,018.4	1,993.0	1,917.4	11.3	10.3	-122.75	292.3	407.7	603.7	584.9	18.82	32.079		
2,200.0	2,112.8	2,086.6	2,005.8	12.0	10.9	-122.70	307.9	434.0	639.0	619.0	19.95	32.026		
2,300.0	2,207.3	2,180.1	2,094.2	12.7	11.6	-122.65	323.5	460.4	674.3	653.2	21.09	31.977		
2,400.0	2,301.8	2,273.7	2,182.6	13.4	12.2	-122.60	339.2	486.8	709.5	687.3	22.22	31.932		
2,500.0	2,396.2	2,367.3	2,271.0	14.1	12.8	-122.56	354.8	513.1	744.8	721.5	23.36	31.891		
2,600.0	2,490.7	2,460.8	2,359.4	14.8	13.4	-122.52	370.5	539.5	780.1	755.6	24.49	31.852		

Company:	Caerus Oil and Gas LLC	Local Co-ordinate Reference:	Well NPR 24A-15 596
Project:	SEC.15-T5S-R96W	TVD Reference:	WELL @ 6453.0ft (Original Well Elev)
Reference Site:	NPR H15 596 North Pad Sec.15-T5S-R96W	MD Reference:	WELL @ 6453.0ft (Original Well Elev)
Site Error:	0.0 ft	North Reference:	True
Reference Well:	NPR 24A-15 596	Survey Calculation Method:	Minimum Curvature
Well Error:	0.0 ft	Output errors are at	2.00 sigma
Reference Wellbore	Wellbore #1	Database:	US_EDM
Reference Design:	Plan #2 (6-14-18)	Offset TVD Reference:	Offset Datum

Offset Design													Offset Site Error:	0.0 ft
Survey Program: 0-MWD													Offset Well Error:	0.0 ft
Measured Depth (ft)	Vertical Depth (ft)	Measured Depth (ft)	Vertical Depth (ft)	Reference (ft)	Offset (ft)	Semi Major Axis Toolface (°)	Offset Wellbore Centre +N/-S (ft)	+E/-W (ft)	Distance Between Centres (ft)	Between Ellipses (ft)	Minimum Separation (ft)	Separation Factor	Warning	
0.0	0.0	0.0	0.0	0.0	0.0	-8.43	38.4	-5.7	38.8					
100.0	100.0	100.0	100.0	0.1	0.1	-8.43	38.4	-5.7	38.8	38.6	0.22	172.678		
200.0	200.0	200.0	200.0	0.3	0.3	-8.43	38.4	-5.7	38.8	38.1	0.67	57.559 CC, ES		
300.0	300.0	300.0	300.0	0.5	0.6	-136.68	38.4	-5.7	40.7	39.5	1.14	35.714		
400.0	399.6	399.3	399.3	0.8	0.8	-140.02	39.4	-3.3	47.0	45.4	1.64	28.728		
500.0	498.8	498.3	497.9	1.1	1.0	-140.50	42.4	3.8	58.2	56.0	2.18	26.720		
600.0	597.1	596.5	595.3	1.4	1.3	-139.28	47.4	15.4	74.1	71.3	2.79	26.593 SF		
700.0	694.3	693.6	690.9	1.9	1.6	-137.35	54.3	31.5	94.7	91.2	3.49	27.129		
800.0	790.2	789.3	784.0	2.4	2.0	-135.25	62.9	51.6	120.0	115.7	4.32	27.794		
838.4	826.5	825.6	819.0	2.7	2.2	-134.46	66.6	60.4	130.9	126.2	4.67	28.013		
900.0	884.8	883.4	874.4	3.1	2.5	-133.36	73.1	75.6	149.2	144.0	5.25	28.442		
1,000.0	979.2	978.1	964.4	3.7	3.0	-131.26	84.6	102.7	179.7	173.4	6.27	28.676		
1,100.0	1,073.7	1,073.1	1,054.7	4.4	3.6	-129.72	96.3	129.9	210.3	203.0	7.34	28.666		
1,200.0	1,168.2	1,168.2	1,145.0	5.1	4.2	-128.58	107.9	157.2	241.1	232.6	8.44	28.572		
1,300.0	1,262.6	1,263.3	1,235.3	5.8	4.8	-127.69	119.6	184.5	271.9	262.3	9.55	28.464		
1,400.0	1,357.1	1,358.3	1,325.6	6.5	5.4	-126.98	131.2	211.8	302.7	292.1	10.68	28.349		
1,500.0	1,451.6	1,453.4	1,415.9	7.2	6.0	-126.41	142.8	239.0	333.6	321.8	11.81	28.240		
1,600.0	1,546.0	1,548.4	1,506.3	7.9	6.6	-125.93	154.5	266.3	364.5	351.6	12.95	28.139		
1,700.0	1,640.5	1,643.5	1,596.6	8.6	7.2	-125.52	166.1	293.6	395.5	381.4	14.10	28.047		
1,800.0	1,735.0	1,738.6	1,686.9	9.3	7.8	-125.18	177.8	320.9	426.4	411.2	15.25	27.964		
1,900.0	1,829.4	1,833.6	1,777.2	10.0	8.4	-124.88	189.4	348.1	457.4	441.0	16.40	27.889		
2,000.0	1,923.9	1,928.7	1,867.5	10.6	9.0	-124.62	201.0	375.4	488.4	470.8	17.55	27.821		
2,100.0	2,018.4	2,023.7	1,957.8	11.3	9.7	-124.39	212.7	402.7	519.3	500.6	18.71	27.760		
2,200.0	2,112.8	2,118.8	2,048.2	12.0	10.3	-124.19	224.3	430.0	550.3	530.5	19.86	27.704		
2,300.0	2,207.3	2,213.9	2,138.5	12.7	10.9	-124.00	236.0	457.2	581.3	560.3	21.02	27.653		
2,400.0	2,301.8	2,308.9	2,228.8	13.4	11.5	-123.84	247.6	484.5	612.3	590.1	22.18	27.607		
2,500.0	2,396.2	2,404.0	2,319.1	14.1	12.1	-123.69	259.2	511.8	643.3	620.0	23.34	27.564		
2,600.0	2,490.7	2,499.0	2,409.4	14.8	12.7	-123.56	270.9	539.0	674.3	649.8	24.50	27.525		
2,700.0	2,585.2	2,594.1	2,499.7	15.5	13.3	-123.44	282.5	566.3	705.3	679.7	25.66	27.488		
2,800.0	2,679.6	2,689.2	2,590.1	16.2	14.0	-123.32	294.2	593.6	736.3	709.5	26.82	27.455		
2,900.0	2,774.1	2,784.2	2,680.4	16.9	14.6	-123.22	305.8	620.9	767.4	739.4	27.98	27.424		
3,000.0	2,868.5	2,879.3	2,770.7	17.6	15.2	-123.13	317.4	648.1	798.4	769.2	29.14	27.395		

Company:	Caerus Oil and Gas LLC	Local Co-ordinate Reference:	Well NPR 24A-15 596
Project:	SEC.15-T5S-R96W	TVD Reference:	WELL @ 6453.0ft (Original Well Elev)
Reference Site:	NPR H15 596 North Pad Sec.15-T5S-R96W	MD Reference:	WELL @ 6453.0ft (Original Well Elev)
Site Error:	0.0 ft	North Reference:	True
Reference Well:	NPR 24A-15 596	Survey Calculation Method:	Minimum Curvature
Well Error:	0.0 ft	Output errors are at	2.00 sigma
Reference Wellbore	Wellbore #1	Database:	US_EDM
Reference Design:	Plan #2 (6-14-18)	Offset TVD Reference:	Offset Datum

Offset Design													Offset Site Error:	0.0 ft
Survey Program: 0-MWD													Offset Well Error:	0.0 ft
Reference		Offset		Semi Major Axis			Distance							Warning
Measured Depth (ft)	Vertical Depth (ft)	Measured Depth (ft)	Vertical Depth (ft)	Reference (ft)	Offset (ft)	Highside Toolface (°)	Offset Wellbore Centre +N/-S (ft)	+E/-W (ft)	Between Centres (ft)	Between Ellipses (ft)	Minimum Separation (ft)	Separation Factor		
0.0	0.0	0.0	0.0	0.0	0.0	-4.96	31.5	-2.7	31.6					
100.0	100.0	100.0	100.0	0.1	0.1	-4.96	31.5	-2.7	31.6	31.4	0.22	140.708		
200.0	200.0	200.0	200.0	0.3	0.3	-4.96	31.5	-2.7	31.6	31.0	0.67	46.903 CC, ES		
300.0	300.0	300.0	300.0	0.5	0.6	-133.97	31.5	-2.7	33.4	32.3	1.14	29.386		
400.0	399.6	399.6	399.6	0.8	0.8	-142.12	31.5	-2.7	39.2	37.6	1.65	23.858		
500.0	498.8	499.2	499.1	1.1	1.0	-148.24	32.2	-0.2	49.8	47.6	2.18	22.796 SF		
600.0	597.1	598.6	598.2	1.4	1.2	-149.73	34.1	7.3	64.2	61.5	2.74	23.443		
700.0	694.3	697.6	696.4	1.9	1.5	-148.79	37.3	19.7	82.3	78.9	3.35	24.540		
800.0	790.2	795.9	793.0	2.4	1.8	-146.73	41.8	36.8	104.0	99.9	4.06	25.597		
838.4	826.5	833.3	829.6	2.7	2.0	-145.81	43.8	44.6	113.3	108.9	4.37	25.901		
900.0	884.8	893.4	887.9	3.1	2.2	-144.28	47.5	58.6	128.5	123.7	4.85	26.483		
1,000.0	979.2	990.4	981.0	3.7	2.7	-140.92	54.3	84.9	153.3	147.5	5.79	26.496		
1,100.0	1,073.7	1,086.8	1,072.9	4.4	3.2	-137.79	61.6	113.0	178.4	171.6	6.84	26.081		
1,200.0	1,168.2	1,183.2	1,164.8	5.1	3.8	-135.42	69.0	141.2	203.9	196.0	7.94	25.674		
1,300.0	1,262.6	1,279.6	1,256.7	5.8	4.4	-133.59	76.3	169.4	229.6	220.6	9.07	25.307		
1,400.0	1,357.1	1,376.0	1,348.6	6.5	5.0	-132.12	83.6	197.5	255.6	245.3	10.22	25.001		
1,500.0	1,451.6	1,472.4	1,440.5	7.2	5.5	-130.92	91.0	225.7	281.6	270.2	11.38	24.741		
1,600.0	1,546.0	1,568.8	1,532.4	7.9	6.1	-129.93	98.3	253.8	307.8	295.2	12.55	24.522		
1,700.0	1,640.5	1,665.2	1,624.3	8.6	6.7	-129.09	105.6	282.0	334.0	320.3	13.72	24.335		
1,800.0	1,735.0	1,761.6	1,716.2	9.3	7.3	-128.37	112.9	310.2	360.3	345.4	14.90	24.175		
1,900.0	1,829.4	1,858.0	1,808.1	10.0	7.9	-127.75	120.3	338.3	386.6	370.5	16.08	24.037		
2,000.0	1,923.9	1,954.3	1,900.0	10.6	8.5	-127.21	127.6	366.5	413.0	395.7	17.27	23.917		
2,100.0	2,018.4	2,050.7	1,991.9	11.3	9.1	-126.73	134.9	394.7	439.3	420.9	18.45	23.811		
2,200.0	2,112.8	2,147.1	2,083.8	12.0	9.7	-126.31	142.3	422.8	465.8	446.1	19.64	23.718		
2,300.0	2,207.3	2,243.5	2,175.7	12.7	10.4	-125.93	149.6	451.0	492.2	471.4	20.82	23.635		
2,400.0	2,301.8	2,339.9	2,267.6	13.4	11.0	-125.60	156.9	479.1	518.7	496.6	22.01	23.562		
2,500.0	2,396.2	2,436.3	2,359.5	14.1	11.6	-125.29	164.2	507.3	545.1	521.9	23.20	23.495		
2,600.0	2,490.7	2,532.7	2,451.4	14.8	12.2	-125.01	171.6	535.5	571.6	547.2	24.39	23.435		
2,700.0	2,585.2	2,629.1	2,543.3	15.5	12.8	-124.76	178.9	563.6	598.1	572.5	25.58	23.381		
2,800.0	2,679.6	2,725.5	2,635.2	16.2	13.4	-124.53	186.2	591.8	624.6	597.8	26.77	23.331		
2,900.0	2,774.1	2,821.9	2,727.1	16.9	14.0	-124.32	193.6	619.9	651.1	623.2	27.96	23.286		
3,000.0	2,868.5	2,918.3	2,819.0	17.6	14.6	-124.12	200.9	648.1	677.6	648.5	29.15	23.244		
3,100.0	2,963.0	3,014.7	2,910.9	18.3	15.2	-123.94	208.2	676.3	704.2	673.8	30.34	23.206		
3,200.0	3,057.5	3,111.1	3,002.8	19.0	15.8	-123.77	215.5	704.4	730.7	699.2	31.54	23.171		
3,300.0	3,151.9	3,207.5	3,094.7	19.7	16.4	-123.62	222.9	732.6	757.2	724.5	32.73	23.138		
3,400.0	3,246.4	3,303.9	3,186.6	20.4	17.0	-123.47	230.2	760.8	783.8	749.9	33.92	23.108		

Company:	Caerus Oil and Gas LLC	Local Co-ordinate Reference:	Well NPR 24A-15 596
Project:	SEC.15-T5S-R96W	TVD Reference:	WELL @ 6453.0ft (Original Well Elev)
Reference Site:	NPR H15 596 North Pad Sec.15-T5S-R96W	MD Reference:	WELL @ 6453.0ft (Original Well Elev)
Site Error:	0.0 ft	North Reference:	True
Reference Well:	NPR 24A-15 596	Survey Calculation Method:	Minimum Curvature
Well Error:	0.0 ft	Output errors are at	2.00 sigma
Reference Wellbore	Wellbore #1	Database:	US_EDM
Reference Design:	Plan #2 (6-14-18)	Offset TVD Reference:	Offset Datum

Offset Design													Offset Site Error:	0.0 ft
Survey Program: 0-MWD													Offset Well Error:	0.0 ft
Reference		Offset		Semi Major Axis			Distance							Warning
Measured Depth (ft)	Vertical Depth (ft)	Measured Depth (ft)	Vertical Depth (ft)	Reference (ft)	Offset (ft)	Highside Toolface (°)	Offset Wellbore Centre +N/-S (ft)	+E/-W (ft)	Between Centres (ft)	Between Ellipses (ft)	Minimum Separation (ft)	Separation Factor		
0.0	0.0	0.0	0.0	0.0	0.0	0.59	24.6	0.3	24.6					
100.0	100.0	100.0	100.0	0.1	0.1	0.59	24.6	0.3	24.6	24.4	0.22	109.558		
200.0	200.0	200.0	200.0	0.3	0.3	0.59	24.6	0.3	24.6	24.0	0.67	36.519 CC, ES		
300.0	300.0	300.0	300.0	0.5	0.6	-129.70	24.6	0.3	26.2	25.1	1.13	23.160		
400.0	399.6	399.6	399.6	0.8	0.8	-140.52	24.6	0.3	31.8	30.2	1.64	19.379		
500.0	498.8	498.8	498.8	1.1	1.0	-151.54	24.6	0.3	42.7	40.5	2.20	19.416		
600.0	597.1	598.8	598.8	1.4	1.2	-157.84	24.5	2.8	57.9	55.2	2.75	21.074		
700.0	694.3	699.4	699.0	1.9	1.4	-159.56	24.2	10.6	75.2	71.9	3.29	22.859		
800.0	790.2	800.2	799.0	2.4	1.7	-159.07	23.6	23.8	94.3	90.4	3.88	24.322		
838.4	826.5	839.0	837.2	2.7	1.8	-158.54	23.3	30.2	102.1	97.9	4.13	24.741		
900.0	884.8	901.4	898.5	3.1	2.0	-157.40	22.7	42.2	114.2	109.7	4.48	25.485		
1,000.0	979.2	1,003.4	997.6	3.7	2.4	-154.38	21.7	66.1	131.6	126.4	5.19	25.341		
1,100.0	1,073.7	1,105.5	1,095.4	4.4	2.9	-150.23	20.4	95.3	146.7	140.6	6.11	24.015		
1,200.0	1,168.2	1,207.3	1,191.2	5.1	3.6	-145.13	18.8	129.6	160.2	153.0	7.27	22.036		
1,300.0	1,262.6	1,308.1	1,284.2	5.8	4.3	-139.24	17.1	168.5	173.1	164.4	8.70	19.895		
1,400.0	1,357.1	1,407.4	1,373.7	6.5	5.2	-132.72	15.2	211.6	186.4	176.0	10.38	17.961		
1,500.0	1,451.6	1,504.8	1,459.1	7.2	6.1	-125.81	13.1	258.3	201.3	189.1	12.24	16.444		
1,600.0	1,546.0	1,600.2	1,541.2	7.9	7.1	-119.15	10.9	306.9	218.9	204.7	14.17	15.447		
1,700.0	1,640.5	1,695.5	1,623.1	8.6	8.2	-113.47	8.7	355.5	239.0	223.0	16.03	14.915		
1,800.0	1,735.0	1,790.7	1,704.9	9.3	9.2	-108.67	6.6	404.1	261.2	243.4	17.80	14.673		
1,900.0	1,829.4	1,886.0	1,786.8	10.0	10.3	-104.61	4.4	452.7	284.9	265.4	19.50	14.610 SF		
2,000.0	1,923.9	1,981.2	1,868.7	10.6	11.3	-101.17	2.2	501.3	309.7	288.6	21.13	14.659		
2,100.0	2,018.4	2,076.5	1,950.6	11.3	12.4	-98.24	0.0	550.0	335.5	312.8	22.71	14.776		
2,200.0	2,112.8	2,171.7	2,032.5	12.0	13.5	-95.72	-2.1	598.6	362.0	337.8	24.24	14.933		
2,300.0	2,207.3	2,267.0	2,114.4	12.7	14.5	-93.54	-4.3	647.2	389.1	363.4	25.75	15.114		
2,400.0	2,301.8	2,362.2	2,196.2	13.4	15.6	-91.64	-6.5	695.8	416.7	389.5	27.22	15.307		
2,500.0	2,396.2	2,457.5	2,278.1	14.1	16.7	-89.97	-8.7	744.4	444.6	416.0	28.68	15.505		
2,600.0	2,490.7	2,552.7	2,360.0	14.8	17.8	-88.50	-10.8	793.0	472.9	442.8	30.11	15.703		
2,700.0	2,585.2	2,648.0	2,441.9	15.5	18.9	-87.19	-13.0	841.6	501.4	469.8	31.54	15.898		
2,800.0	2,679.6	2,743.2	2,523.8	16.2	19.9	-86.03	-15.2	890.3	530.1	497.1	32.95	16.088		
2,900.0	2,774.1	2,838.5	2,605.7	16.9	21.0	-84.98	-17.4	938.9	559.0	524.6	34.35	16.273		
3,000.0	2,868.5	2,933.8	2,687.5	17.6	22.1	-84.03	-19.5	987.5	588.1	552.3	35.75	16.450		
3,100.0	2,963.0	3,029.0	2,769.4	18.3	23.2	-83.17	-21.7	1,036.1	617.3	580.1	37.14	16.621		
3,200.0	3,057.5	3,124.3	2,851.3	19.0	24.3	-82.39	-23.9	1,084.7	646.6	608.0	38.52	16.785		
3,300.0	3,151.9	3,219.5	2,933.2	19.7	25.3	-81.68	-26.1	1,133.3	676.0	636.1	39.90	16.942		
3,400.0	3,246.4	3,314.8	3,015.1	20.4	26.4	-81.03	-28.2	1,181.9	705.5	664.2	41.28	17.092		
3,500.0	3,340.9	3,410.0	3,097.0	21.1	27.5	-80.43	-30.4	1,230.5	735.0	692.4	42.65	17.235		
3,600.0	3,435.3	3,505.3	3,178.8	21.8	28.6	-79.87	-32.6	1,279.2	764.7	720.7	44.02	17.372		
3,700.0	3,529.8	3,600.5	3,260.7	22.5	29.7	-79.36	-34.8	1,327.8	794.4	749.0	45.38	17.503		

Company:	Caerus Oil and Gas LLC	Local Co-ordinate Reference:	Well NPR 24A-15 596
Project:	SEC.15-T5S-R96W	TVD Reference:	WELL @ 6453.0ft (Original Well Elev)
Reference Site:	NPR H15 596 North Pad Sec.15-T5S-R96W	MD Reference:	WELL @ 6453.0ft (Original Well Elev)
Site Error:	0.0 ft	North Reference:	True
Reference Well:	NPR 24A-15 596	Survey Calculation Method:	Minimum Curvature
Well Error:	0.0 ft	Output errors are at	2.00 sigma
Reference Wellbore	Wellbore #1	Database:	US_EDM
Reference Design:	Plan #2 (6-14-18)	Offset TVD Reference:	Offset Datum

Offset Design													Offset Site Error:	0.0 ft
Survey Program: 0-MWD													Offset Well Error:	0.0 ft
Reference		Offset		Semi Major Axis			Distance							Warning
Measured Depth (ft)	Vertical Depth (ft)	Measured Depth (ft)	Vertical Depth (ft)	Reference (ft)	Offset (ft)	Highside Toolface (°)	Offset Wellbore Centre +N/-S (ft)	+E/-W (ft)	Between Centres (ft)	Between Ellipses (ft)	Minimum Separation (ft)	Separation Factor		
0.0	0.0	0.0	0.0	0.0	0.0	10.13	17.8	3.2	18.1	18.1	0.00	N/A		
100.0	100.0	100.0	100.0	0.1	0.1	10.13	17.8	3.2	18.1	17.9	0.22	80.503		
200.0	200.0	200.0	200.0	0.3	0.3	10.13	17.8	3.2	18.1	17.4	0.67	26.834 CC, ES		
300.0	300.0	300.0	300.0	0.5	0.6	-122.48	17.8	3.2	19.4	18.2	1.12	17.215		
400.0	399.6	399.6	399.6	0.8	0.8	-138.03	17.8	3.2	24.5	22.9	1.64	14.974		
500.0	498.8	499.8	499.7	1.1	1.0	-148.75	17.3	5.7	33.8	31.6	2.18	15.544		
600.0	597.1	600.3	600.0	1.4	1.2	-152.38	15.9	13.5	45.2	42.5	2.72	16.644		
700.0	694.3	701.2	699.9	1.9	1.5	-152.67	13.5	26.5	58.1	54.8	3.30	17.594		
800.0	790.2	802.2	799.3	2.4	1.8	-151.35	10.2	44.7	72.4	68.4	3.97	18.243		
838.4	826.5	841.0	837.1	2.7	2.0	-150.61	8.6	53.0	78.3	74.0	4.26	18.366		
900.0	884.8	903.5	897.7	3.1	2.2	-149.06	5.9	68.1	87.3	82.6	4.71	18.540		
1,000.0	979.2	1,002.8	993.4	3.7	2.7	-146.17	1.1	94.0	100.9	95.4	5.57	18.127		
1,100.0	1,073.7	1,101.7	1,088.8	4.4	3.2	-143.95	-3.7	119.8	114.7	108.2	6.51	17.633		
1,200.0	1,168.2	1,200.7	1,184.2	5.1	3.8	-142.22	-8.4	145.7	128.7	121.2	7.50	17.166		
1,300.0	1,262.6	1,299.6	1,279.6	5.8	4.3	-140.83	-13.2	171.5	142.7	134.2	8.52	16.754		
1,400.0	1,357.1	1,398.6	1,375.0	6.5	4.8	-139.68	-17.9	197.4	156.8	147.3	9.56	16.398		
1,500.0	1,451.6	1,497.5	1,470.4	7.2	5.4	-138.73	-22.7	223.2	171.0	160.4	10.62	16.092		
1,600.0	1,546.0	1,596.5	1,565.8	7.9	5.9	-137.92	-27.4	249.1	185.2	173.5	11.70	15.830		
1,700.0	1,640.5	1,695.4	1,661.2	8.6	6.5	-137.22	-32.2	274.9	199.4	186.6	12.78	15.603		
1,800.0	1,735.0	1,794.4	1,756.6	9.3	7.1	-136.62	-36.9	300.8	213.7	199.8	13.87	15.406		
1,900.0	1,829.4	1,893.4	1,852.0	10.0	7.6	-136.10	-41.7	326.6	227.9	213.0	14.96	15.234		
2,000.0	1,923.9	1,992.3	1,947.4	10.6	8.2	-135.63	-46.5	352.5	242.2	226.2	16.06	15.082		
2,100.0	2,018.4	2,091.3	2,042.8	11.3	8.7	-135.22	-51.2	378.3	256.5	239.4	17.16	14.948		
2,200.0	2,112.8	2,190.2	2,138.2	12.0	9.3	-134.85	-56.0	404.2	270.8	252.6	18.26	14.828		
2,300.0	2,207.3	2,289.2	2,233.6	12.7	9.8	-134.52	-60.7	430.0	285.2	265.8	19.37	14.721		
2,400.0	2,301.8	2,388.1	2,329.0	13.4	10.4	-134.22	-65.5	455.9	299.5	279.0	20.48	14.624		
2,500.0	2,396.2	2,487.1	2,424.4	14.1	11.0	-133.95	-70.2	481.7	313.8	292.2	21.59	14.537		
2,600.0	2,490.7	2,586.1	2,519.8	14.8	11.5	-133.70	-75.0	507.6	328.2	305.5	22.70	14.457		
2,700.0	2,585.2	2,685.0	2,615.2	15.5	12.1	-133.47	-79.8	533.4	342.5	318.7	23.81	14.385		
2,800.0	2,679.6	2,784.0	2,710.6	16.2	12.6	-133.26	-84.5	559.3	356.9	332.0	24.92	14.319		
2,900.0	2,774.1	2,882.9	2,806.0	16.9	13.2	-133.07	-89.3	585.1	371.2	345.2	26.04	14.258		
3,000.0	2,868.5	2,981.9	2,901.4	17.6	13.8	-132.89	-94.0	611.0	385.6	358.5	27.15	14.201		
3,100.0	2,963.0	3,080.8	2,996.8	18.3	14.3	-132.72	-98.8	636.8	400.0	371.7	28.27	14.149		
3,200.0	3,057.5	3,179.8	3,092.2	19.0	14.9	-132.57	-103.5	662.7	414.3	385.0	29.38	14.101		
3,300.0	3,151.9	3,278.7	3,187.6	19.7	15.4	-132.42	-108.3	688.5	428.7	398.2	30.50	14.056		
3,400.0	3,246.4	3,377.7	3,283.0	20.4	16.0	-132.29	-113.1	714.4	443.1	411.5	31.62	14.014		
3,500.0	3,340.9	3,476.7	3,378.4	21.1	16.6	-132.16	-117.8	740.2	457.5	424.7	32.73	13.975		
3,600.0	3,435.3	3,575.6	3,473.8	21.8	17.1	-132.04	-122.6	766.1	471.9	438.0	33.85	13.939		
3,700.0	3,529.8	3,674.6	3,569.2	22.5	17.7	-131.93	-127.3	791.9	486.2	451.3	34.97	13.904		
3,800.0	3,624.3	3,773.5	3,664.6	23.2	18.3	-131.83	-132.1	817.8	500.6	464.5	36.09	13.872		
3,900.0	3,718.7	3,872.5	3,760.0	23.9	18.8	-131.73	-136.8	843.6	515.0	477.8	37.21	13.842		
4,000.0	3,813.2	3,971.4	3,855.4	24.6	19.4	-131.63	-141.6	869.5	529.4	491.1	38.33	13.813		
4,100.0	3,907.7	4,070.4	3,950.8	25.3	19.9	-131.54	-146.3	895.3	543.8	504.3	39.44	13.786		
4,200.0	4,002.1	4,169.3	4,046.2	26.0	20.5	-131.46	-151.1	921.2	558.2	517.6	40.56	13.761		
4,300.0	4,096.6	4,268.3	4,141.6	26.7	21.1	-131.38	-155.9	947.0	572.6	530.9	41.68	13.736		
4,400.0	4,191.1	4,367.3	4,237.0	27.4	21.6	-131.30	-160.6	972.9	587.0	544.2	42.80	13.713		
4,500.0	4,285.5	4,466.2	4,332.4	28.1	22.2	-131.23	-165.4	998.7	601.3	557.4	43.92	13.691		
4,600.0	4,380.0	4,565.2	4,427.8	28.8	22.8	-131.16	-170.1	1,024.6	615.7	570.7	45.04	13.670		
4,700.0	4,474.5	4,664.1	4,523.2	29.5	23.3	-131.09	-174.9	1,050.4	630.1	584.0	46.16	13.651		
4,800.0	4,568.9	4,763.1	4,618.6	30.2	23.9	-131.03	-179.6	1,076.3	644.5	597.2	47.28	13.632		
4,900.0	4,663.4	4,862.0	4,714.0	30.9	24.4	-130.97	-184.4	1,102.1	658.9	610.5	48.40	13.614		
5,000.0	4,757.9	4,961.0	4,809.4	31.6	25.0	-130.91	-189.2	1,128.0	673.3	623.8	49.52	13.596		

CC - Min centre to center distance or convergent point, SF - min separation factor, ES - min ellipse separation

Company:	Caerus Oil and Gas LLC	Local Co-ordinate Reference:	Well NPR 24A-15 596
Project:	SEC.15-T5S-R96W	TVD Reference:	WELL @ 6453.0ft (Original Well Elev)
Reference Site:	NPR H15 596 North Pad Sec.15-T5S-R96W	MD Reference:	WELL @ 6453.0ft (Original Well Elev)
Site Error:	0.0 ft	North Reference:	True
Reference Well:	NPR 24A-15 596	Survey Calculation Method:	Minimum Curvature
Well Error:	0.0 ft	Output errors are at	2.00 sigma
Reference Wellbore	Wellbore #1	Database:	US_EDM
Reference Design:	Plan #2 (6-14-18)	Offset TVD Reference:	Offset Datum

Offset Design NPR H15 596 North Pad Sec.15-T5S-R96W - NPR 13C-14 596 - Wellbore #1 - Plan #2 (6-14-18)												Offset Site Error:	0.0 ft
Survey Program: 0-MWD												Offset Well Error:	0.0 ft
Reference		Offset		Semi Major Axis			Distance						Warning
Measured Depth (ft)	Vertical Depth (ft)	Measured Depth (ft)	Vertical Depth (ft)	Reference (ft)	Offset (ft)	Highside Toolface (°)	Offset Wellbore Centre +N/-S (ft)	+E/-W (ft)	Between Centres (ft)	Between Ellipses (ft)	Minimum Separation (ft)	Separation Factor	
5,100.0	4,852.3	5,060.0	4,904.8	32.3	25.6	-130.86	-193.9	1,153.8	687.7	637.1	50.64	13.580	
5,200.0	4,946.8	5,158.9	5,000.2	33.0	26.1	-130.80	-198.7	1,179.7	702.1	650.4	51.76	13.564	
5,300.0	5,041.3	5,257.9	5,095.6	33.7	26.7	-130.75	-203.4	1,205.5	716.5	663.6	52.88	13.549	
5,400.0	5,135.7	5,356.8	5,191.1	34.4	27.3	-130.70	-208.2	1,231.4	730.9	676.9	54.00	13.534	
5,500.0	5,230.2	5,455.8	5,286.5	35.1	27.8	-130.66	-212.9	1,257.2	745.3	690.2	55.13	13.520	
5,600.0	5,324.7	5,554.7	5,381.9	35.8	28.4	-130.61	-217.7	1,283.1	759.7	703.5	56.25	13.507	
5,668.6	5,389.5	5,622.6	5,447.3	36.2	28.8	-130.58	-221.0	1,300.8	769.6	712.6	57.02	13.498	
5,700.0	5,419.2	5,653.7	5,477.3	36.4	28.9	-130.65	-222.5	1,308.9	774.0	716.6	57.36	13.494	
5,800.0	5,515.0	5,746.6	5,567.1	36.9	29.4	-130.73	-226.8	1,332.5	785.9	727.6	58.27	13.486	
5,900.0	5,612.1	5,835.9	5,654.2	37.3	29.7	-130.77	-230.3	1,351.3	795.6	736.6	59.00	13.485 SF	

Company:	Caerus Oil and Gas LLC	Local Co-ordinate Reference:	Well NPR 24A-15 596
Project:	SEC.15-T5S-R96W	TVD Reference:	WELL @ 6453.0ft (Original Well Elev)
Reference Site:	NPR H15 596 North Pad Sec.15-T5S-R96W	MD Reference:	WELL @ 6453.0ft (Original Well Elev)
Site Error:	0.0 ft	North Reference:	True
Reference Well:	NPR 24A-15 596	Survey Calculation Method:	Minimum Curvature
Well Error:	0.0 ft	Output errors are at	2.00 sigma
Reference Wellbore	Wellbore #1	Database:	US_EDM
Reference Design:	Plan #2 (6-14-18)	Offset TVD Reference:	Offset Datum

Offset Design		NPR H15 596 North Pad Sec.15-T5S-R96W - NPR 13D-14 596 - Wellbore #1 - Plan #2 (6-14-18)											Offset Site Error:		0.0 ft
Survey Program: 0-MWD													Offset Well Error:		0.0 ft
Reference		Offset		Semi Major Axis			Distance							Warning	
Measured Depth	Vertical Depth	Measured Depth	Vertical Depth	Reference	Offset	Highside Toolface	Offset Wellbore Centre		Between Centres	Between Ellipses	Minimum Separation	Separation Factor			
Depth (ft)	Depth (ft)	Depth (ft)	Depth (ft)	(ft)	(ft)	(°)	+N/-S (ft)	+E/-W (ft)	(ft)	(ft)	(ft)				
0.0	0.0	0.0	0.0	0.0	0.0	29.53	10.9	6.2	12.5	12.5	0.00	N/A			
100.0	100.0	100.0	100.0	0.1	0.1	29.53	10.9	6.2	12.5	12.3	0.22	55.691			
200.0	200.0	200.0	200.0	0.3	0.3	29.53	10.9	6.2	12.5	11.8	0.67	18.564	CC, ES		
300.0	300.0	299.7	299.6	0.5	0.6	-97.41	10.9	8.8	14.1	13.0	1.10	12.791			
400.0	399.6	399.4	399.1	0.8	0.8	-99.65	10.4	16.5	18.3	16.8	1.57	11.692			
500.0	498.8	499.3	498.1	1.1	1.1	-100.83	7.8	28.9	23.6	21.5	2.13	11.065			
600.0	597.1	599.1	596.4	1.4	1.4	-101.32	2.9	45.9	29.8	26.9	2.85	10.461			
700.0	694.3	699.0	693.5	1.9	1.9	-101.43	-4.2	67.6	36.8	33.1	3.73	9.861			
800.0	790.2	798.7	789.4	2.4	2.4	-101.61	-13.4	93.5	44.7	39.9	4.81	9.295			
838.4	826.5	836.9	826.0	2.7	2.6	-102.68	-17.1	103.9	48.0	42.7	5.26	9.122			
900.0	884.8	898.3	884.7	3.1	3.0	-104.90	-23.1	120.5	53.5	47.5	6.00	8.918			
1,000.0	979.2	997.8	980.1	3.7	3.6	-107.66	-32.8	147.5	62.5	55.3	7.20	8.684			
1,100.0	1,073.7	1,097.4	1,075.4	4.4	4.2	-109.73	-42.5	174.5	71.6	63.2	8.40	8.529			
1,200.0	1,168.2	1,196.9	1,170.7	5.1	4.8	-111.32	-52.2	201.5	80.9	71.3	9.60	8.420			
1,300.0	1,262.6	1,296.5	1,266.0	5.8	5.4	-112.59	-61.9	228.6	90.1	79.3	10.80	8.342			
1,400.0	1,357.1	1,396.0	1,361.4	6.5	6.0	-113.62	-71.7	255.6	99.4	87.4	12.00	8.283			
1,500.0	1,451.6	1,495.6	1,456.7	7.2	6.6	-114.48	-81.4	282.6	108.7	95.5	13.20	8.237			
1,600.0	1,546.0	1,595.1	1,552.0	7.9	7.2	-115.20	-91.1	309.6	118.1	103.7	14.40	8.201			
1,700.0	1,640.5	1,694.7	1,647.3	8.6	7.8	-115.81	-100.8	336.6	127.4	111.8	15.59	8.172			
1,800.0	1,735.0	1,794.2	1,742.7	9.3	8.4	-116.34	-110.5	363.6	136.8	120.0	16.79	8.148			
1,900.0	1,829.4	1,893.8	1,838.0	10.0	9.0	-116.81	-120.2	390.6	146.2	128.2	17.98	8.128			
2,000.0	1,923.9	1,993.3	1,933.3	10.6	9.6	-117.21	-129.9	417.6	155.6	136.4	19.18	8.112			
2,100.0	2,018.4	2,092.9	2,028.7	11.3	10.2	-117.57	-139.6	444.6	165.0	144.6	20.37	8.098			
2,200.0	2,112.8	2,192.5	2,124.0	12.0	10.8	-117.89	-149.4	471.6	174.4	152.8	21.56	8.085			
2,300.0	2,207.3	2,292.0	2,219.3	12.7	11.5	-118.18	-159.1	498.6	183.8	161.0	22.76	8.075			
2,400.0	2,301.8	2,391.6	2,314.6	13.4	12.1	-118.44	-168.8	525.6	193.2	169.2	23.95	8.065			
2,500.0	2,396.2	2,491.1	2,410.0	14.1	12.7	-118.68	-178.5	552.6	202.6	177.4	25.14	8.057			
2,600.0	2,490.7	2,590.7	2,505.3	14.8	13.3	-118.89	-188.2	579.6	212.0	185.7	26.34	8.050			
2,700.0	2,585.2	2,690.2	2,600.6	15.5	13.9	-119.09	-197.9	606.6	221.4	193.9	27.53	8.043			
2,800.0	2,679.6	2,789.8	2,695.9	16.2	14.5	-119.27	-207.6	633.6	230.8	202.1	28.72	8.037			
2,900.0	2,774.1	2,889.3	2,791.3	16.9	15.1	-119.44	-217.4	660.6	240.3	210.3	29.91	8.032			
3,000.0	2,868.5	2,988.9	2,886.6	17.6	15.7	-119.59	-227.1	687.6	249.7	218.6	31.10	8.027			
3,100.0	2,963.0	3,088.4	2,981.9	18.3	16.4	-119.74	-236.8	714.7	259.1	226.8	32.30	8.023			
3,200.0	3,057.5	3,188.0	3,077.2	19.0	17.0	-119.87	-246.5	741.7	268.5	235.0	33.49	8.019			
3,300.0	3,151.9	3,287.5	3,172.6	19.7	17.6	-119.99	-256.2	768.7	278.0	243.3	34.68	8.016			
3,400.0	3,246.4	3,387.1	3,267.9	20.4	18.2	-120.11	-265.9	795.7	287.4	251.5	35.87	8.012			
3,500.0	3,340.9	3,486.6	3,363.2	21.1	18.8	-120.22	-275.6	822.7	296.8	259.8	37.06	8.009			
3,600.0	3,435.3	3,586.2	3,458.5	21.8	19.4	-120.32	-285.4	849.7	306.3	268.0	38.25	8.006			
3,700.0	3,529.8	3,685.7	3,553.9	22.5	20.0	-120.41	-295.1	876.7	315.7	276.2	39.44	8.004			
3,800.0	3,624.3	3,785.3	3,649.2	23.2	20.7	-120.50	-304.8	903.7	325.1	284.5	40.63	8.001			
3,900.0	3,718.7	3,884.8	3,744.5	23.9	21.3	-120.59	-314.5	930.7	334.6	292.7	41.83	7.999			
4,000.0	3,813.2	3,984.4	3,839.8	24.6	21.9	-120.67	-324.2	957.7	344.0	301.0	43.02	7.997			
4,100.0	3,907.7	4,084.0	3,935.2	25.3	22.5	-120.75	-333.9	984.7	353.4	309.2	44.21	7.995			
4,200.0	4,002.1	4,183.5	4,030.5	26.0	23.1	-120.82	-343.6	1,011.7	362.9	317.5	45.40	7.993			
4,300.0	4,096.6	4,283.1	4,125.8	26.7	23.7	-120.89	-353.3	1,038.7	372.3	325.7	46.59	7.991			
4,400.0	4,191.1	4,382.6	4,221.2	27.4	24.3	-120.95	-363.1	1,065.7	381.7	334.0	47.78	7.990			
4,500.0	4,285.5	4,482.2	4,316.5	28.1	24.9	-121.01	-372.8	1,092.7	391.2	342.2	48.97	7.988			
4,600.0	4,380.0	4,581.7	4,411.8	28.8	25.6	-121.07	-382.5	1,119.7	400.6	350.5	50.16	7.987			
4,700.0	4,474.5	4,681.3	4,507.1	29.5	26.2	-121.13	-392.2	1,146.7	410.1	358.7	51.35	7.985			
4,800.0	4,568.9	4,780.8	4,602.5	30.2	26.8	-121.18	-401.9	1,173.7	419.5	367.0	52.54	7.984			
4,900.0	4,663.4	4,880.4	4,697.8	30.9	27.4	-121.23	-411.6	1,200.8	428.9	375.2	53.73	7.983			
5,000.0	4,757.9	4,979.9	4,793.1	31.6	28.0	-121.28	-421.3	1,227.8	438.4	383.5	54.93	7.981			

CC - Min centre to center distance or convergent point, SF - min separation factor, ES - min ellipse separation

Company:	Caerus Oil and Gas LLC	Local Co-ordinate Reference:	Well NPR 24A-15 596
Project:	SEC.15-T5S-R96W	TVD Reference:	WELL @ 6453.0ft (Original Well Elev)
Reference Site:	NPR H15 596 North Pad Sec.15-T5S-R96W	MD Reference:	WELL @ 6453.0ft (Original Well Elev)
Site Error:	0.0 ft	North Reference:	True
Reference Well:	NPR 24A-15 596	Survey Calculation Method:	Minimum Curvature
Well Error:	0.0 ft	Output errors are at	2.00 sigma
Reference Wellbore	Wellbore #1	Database:	US_EDM
Reference Design:	Plan #2 (6-14-18)	Offset TVD Reference:	Offset Datum

Offset Design													Offset Site Error:	0.0 ft
Survey Program: 0-MWD													Offset Well Error:	0.0 ft
Reference		Offset		Semi Major Axis			Distance							Warning
Measured Depth (ft)	Vertical Depth (ft)	Measured Depth (ft)	Vertical Depth (ft)	Reference (ft)	Offset (ft)	Highside Toolface (°)	Offset Wellbore Centre +N/-S (ft)	+E/-W (ft)	Between Centres (ft)	Between Ellipses (ft)	Minimum Separation (ft)	Separation Factor		
5,100.0	4,852.3	5,079.5	4,888.4	32.3	28.6	-121.33	-431.1	1,254.8	447.8	391.7	56.12	7.980		
5,200.0	4,946.8	5,179.0	4,983.8	33.0	29.2	-121.37	-440.8	1,281.8	457.3	400.0	57.31	7.979		
5,300.0	5,041.3	5,278.6	5,079.1	33.7	29.9	-121.42	-450.5	1,308.8	466.7	408.2	58.50	7.978		
5,400.0	5,135.7	5,378.1	5,174.4	34.4	30.5	-121.46	-460.2	1,335.8	476.1	416.5	59.69	7.977		
5,500.0	5,230.2	5,477.7	5,269.7	35.1	31.1	-121.50	-469.9	1,362.8	485.6	424.7	60.88	7.976		
5,600.0	5,324.7	5,577.2	5,365.1	35.8	31.7	-121.54	-479.6	1,389.8	495.0	433.0	62.07	7.975		
5,668.6	5,389.5	5,645.5	5,430.5	36.2	32.1	-121.56	-486.3	1,408.3	501.5	438.6	62.89	7.975		
5,700.0	5,419.2	5,676.8	5,460.4	36.4	32.3	-121.62	-489.3	1,416.8	504.3	441.1	63.24	7.974		
5,800.0	5,515.0	5,770.6	5,550.6	36.9	32.8	-121.65	-498.0	1,440.8	512.1	447.9	64.16	7.981		
5,900.0	5,612.1	5,863.4	5,641.0	37.3	33.1	-121.66	-505.0	1,460.4	518.4	453.5	64.91	7.986		
6,000.0	5,710.4	5,956.2	5,732.4	37.6	33.4	-121.66	-510.6	1,475.9	523.3	457.8	65.51	7.989		
6,100.0	5,809.4	6,049.1	5,824.6	37.9	33.6	-121.65	-514.6	1,487.1	526.8	460.9	65.96	7.987		
6,200.0	5,909.1	6,142.1	5,917.2	38.0	33.8	-121.63	-517.2	1,494.2	528.9	462.7	66.27	7.981		
6,307.0	6,016.0	6,241.6	6,016.6	38.1	33.9	4.06	-518.2	1,497.1	529.6	493.4	36.20	14.629		
6,321.4	6,030.4	6,255.6	6,030.6	38.1	33.9	114.06	-518.2	1,497.1	529.6	463.1	66.50	7.965		
6,400.0	6,109.0	6,337.3	6,112.3	38.2	33.9	114.07	-518.4	1,496.4	529.7	463.1	66.61	7.952		
6,500.0	6,209.0	6,441.2	6,216.2	38.2	34.0	114.07	-519.3	1,494.1	529.7	463.0	66.70	7.941		
6,600.0	6,308.9	6,545.1	6,320.0	38.3	34.0	114.07	-520.8	1,489.9	529.7	462.9	66.75	7.935		
6,639.9	6,348.7	6,586.4	6,361.3	38.3	34.0	114.07	-521.6	1,487.8	529.7	462.9	66.76	7.934		
6,641.6	6,350.4	6,588.1	6,363.0	38.3	34.0	114.07	-521.6	1,487.7	529.7	462.9	66.76	7.934		
6,700.0	6,408.8	6,646.5	6,421.3	38.3	34.0	114.07	-522.8	1,484.5	529.7	462.9	66.78	7.932		
6,800.0	6,508.6	6,746.5	6,521.1	38.3	34.1	114.08	-524.8	1,479.0	529.7	462.9	66.80	7.929		
6,900.0	6,608.4	6,846.5	6,621.0	38.3	34.1	114.08	-526.8	1,473.6	529.7	462.9	66.83	7.926		
7,000.0	6,708.2	6,946.5	6,720.8	38.3	34.1	114.08	-528.7	1,468.1	529.7	462.9	66.86	7.923		
7,100.0	6,808.1	7,046.5	6,820.6	38.4	34.1	114.08	-530.7	1,462.7	529.7	462.8	66.90	7.918		
7,200.0	6,907.9	7,146.5	6,920.5	38.4	34.1	114.09	-532.7	1,457.2	529.7	462.8	66.94	7.914		
7,300.0	7,007.7	7,246.5	7,020.3	38.4	34.2	114.09	-534.7	1,451.8	529.8	462.8	66.98	7.909		
7,400.0	7,107.6	7,346.5	7,120.1	38.5	34.2	114.09	-536.7	1,446.3	529.8	462.7	67.03	7.904		
7,500.0	7,207.4	7,446.5	7,220.0	38.5	34.2	114.10	-538.7	1,440.8	529.8	462.7	67.08	7.898		
7,600.0	7,307.2	7,546.5	7,319.8	38.5	34.3	114.10	-540.7	1,435.4	529.8	462.7	67.13	7.892		
7,700.0	7,407.0	7,646.5	7,419.6	38.6	34.3	114.10	-542.6	1,429.9	529.8	462.6	67.19	7.885		
7,800.0	7,506.9	7,746.5	7,519.4	38.6	34.3	114.10	-544.6	1,424.5	529.8	462.6	67.25	7.878		
7,900.0	7,606.7	7,846.5	7,619.3	38.6	34.4	114.11	-546.6	1,419.0	529.8	462.5	67.32	7.871		
8,000.0	7,706.5	7,946.5	7,719.1	38.7	34.4	114.11	-548.6	1,413.5	529.8	462.5	67.38	7.863		
8,100.0	7,806.4	8,046.5	7,818.9	38.7	34.4	114.11	-550.6	1,408.1	529.9	462.4	67.45	7.855		
8,200.0	7,906.2	8,146.5	7,918.8	38.8	34.5	114.11	-552.6	1,402.6	529.9	462.3	67.53	7.846		
8,300.0	8,006.0	8,246.5	8,018.6	38.8	34.5	114.12	-554.6	1,397.2	529.9	462.3	67.61	7.837		
8,400.0	8,105.9	8,346.5	8,118.4	38.9	34.6	114.12	-556.6	1,391.7	529.9	462.2	67.69	7.828		
8,500.0	8,205.7	8,446.5	8,218.3	38.9	34.6	114.12	-558.5	1,386.3	529.9	462.1	67.78	7.818		
8,600.0	8,305.5	8,546.5	8,318.1	39.0	34.7	114.13	-560.5	1,380.8	529.9	462.0	67.87	7.808		
8,700.0	8,405.3	8,646.5	8,417.9	39.0	34.7	114.13	-562.5	1,375.3	529.9	462.0	67.96	7.798		
8,800.0	8,505.2	8,746.5	8,517.8	39.1	34.8	114.13	-564.5	1,369.9	529.9	461.9	68.05	7.787		
8,900.0	8,605.0	8,846.5	8,617.6	39.1	34.8	114.13	-566.5	1,364.4	529.9	461.8	68.15	7.776		
9,000.0	8,704.8	8,946.5	8,717.4	39.2	34.9	114.14	-568.5	1,359.0	530.0	461.7	68.26	7.764		
9,100.0	8,804.7	9,046.5	8,817.2	39.2	34.9	114.14	-570.5	1,353.5	530.0	461.6	68.36	7.752		
9,200.0	8,904.5	9,146.5	8,917.1	39.3	35.0	114.14	-572.4	1,348.0	530.0	461.5	68.47	7.740		
9,300.0	9,004.3	9,246.5	9,016.9	39.3	35.0	114.15	-574.4	1,342.6	530.0	461.4	68.59	7.727		
9,400.0	9,104.1	9,346.5	9,116.7	39.4	35.1	114.15	-576.4	1,337.1	530.0	461.3	68.70	7.714		
9,500.0	9,204.0	9,446.5	9,216.6	39.5	35.2	114.15	-578.4	1,331.7	530.0	461.2	68.82	7.701		
9,577.2	9,281.0	9,523.7	9,293.6	39.5	35.2	114.15	-579.9	1,327.5	530.0	461.1	68.92	7.691 SF		

Company:	Caerus Oil and Gas LLC	Local Co-ordinate Reference:	Well NPR 24A-15 596
Project:	SEC.15-T5S-R96W	TVD Reference:	WELL @ 6453.0ft (Original Well Elev)
Reference Site:	NPR H15 596 North Pad Sec.15-T5S-R96W	MD Reference:	WELL @ 6453.0ft (Original Well Elev)
Site Error:	0.0 ft	North Reference:	True
Reference Well:	NPR 24A-15 596	Survey Calculation Method:	Minimum Curvature
Well Error:	0.0 ft	Output errors are at	2.00 sigma
Reference Wellbore	Wellbore #1	Database:	US_EDM
Reference Design:	Plan #2 (6-14-18)	Offset TVD Reference:	Offset Datum

Offset Design													Offset Site Error:	0.0 ft
Survey Program: 0-MWD													Offset Well Error:	0.0 ft
Reference		Offset		Semi Major Axis			Distance							Warning
Measured Depth (ft)	Vertical Depth (ft)	Measured Depth (ft)	Vertical Depth (ft)	Reference (ft)	Offset (ft)	Highside Toolface (°)	Offset Wellbore Centre +N/-S (ft)	+E/-W (ft)	Between Centres (ft)	Between Ellipses (ft)	Minimum Separation (ft)	Separation Factor		
0.0	0.0	0.0	0.0	0.0	0.0	66.62	4.0	9.2	10.0	10.0	0.00	N/A		
100.0	100.0	100.0	100.0	0.1	0.1	66.62	4.0	9.2	10.0	9.8	0.22	44.517		
200.0	200.0	200.0	200.0	0.3	0.3	66.62	4.0	9.2	10.0	9.3	0.67	14.839 CC		
300.0	300.0	299.7	299.6	0.5	0.6	-60.09	2.7	11.5	10.3	9.2	1.10	9.304 ES		
400.0	399.6	399.3	399.0	0.8	0.8	-62.97	-1.0	18.3	11.1	9.5	1.57	7.078		
500.0	498.8	499.0	497.8	1.1	1.1	-66.91	-7.2	29.7	12.5	10.4	2.13	5.881		
600.0	597.1	598.7	595.8	1.4	1.4	-71.09	-15.8	45.6	14.6	11.7	2.83	5.147		
700.0	694.3	698.3	692.6	1.9	1.9	-74.95	-26.8	66.0	17.3	13.6	3.72	4.651		
800.0	790.2	797.9	788.2	2.4	2.4	-78.32	-40.2	90.8	20.6	15.8	4.81	4.295		
838.4	826.5	836.2	824.7	2.7	2.7	-80.88	-45.8	101.0	22.0	16.7	5.29	4.151		
900.0	884.8	897.8	883.4	3.1	3.0	-85.93	-54.6	117.4	24.1	18.0	6.09	3.953		
1,000.0	979.2	997.7	978.6	3.7	3.7	-92.39	-69.1	144.0	27.8	20.4	7.40	3.764		
1,100.0	1,073.7	1,097.6	1,073.8	4.4	4.3	-97.27	-83.5	170.6	31.9	23.2	8.68	3.672		
1,200.0	1,168.2	1,197.5	1,169.0	5.1	4.9	-101.03	-97.9	197.2	36.1	26.1	9.94	3.629		
1,300.0	1,262.6	1,297.3	1,264.2	5.8	5.6	-104.00	-112.3	223.8	40.4	29.2	11.18	3.614		
1,400.0	1,357.1	1,397.2	1,359.4	6.5	6.2	-106.39	-126.7	250.4	44.8	32.4	12.41	3.613 SF		
1,500.0	1,451.6	1,497.1	1,454.5	7.2	6.8	-108.34	-141.1	277.0	49.3	35.7	13.62	3.621		
1,600.0	1,546.0	1,597.0	1,549.7	7.9	7.5	-109.97	-155.5	303.7	53.8	39.0	14.82	3.632		
1,700.0	1,640.5	1,696.9	1,644.9	8.6	8.1	-111.35	-169.9	330.3	58.4	42.4	16.02	3.646		
1,800.0	1,735.0	1,796.8	1,740.1	9.3	8.8	-112.52	-184.3	356.9	63.0	45.8	17.21	3.661		
1,900.0	1,829.4	1,896.7	1,835.3	10.0	9.4	-113.54	-198.8	383.5	67.6	49.2	18.40	3.676		
2,000.0	1,923.9	1,996.6	1,930.5	10.6	10.0	-114.42	-213.2	410.1	72.3	52.7	19.58	3.691		
2,100.0	2,018.4	2,096.4	2,025.7	11.3	10.7	-115.20	-227.6	436.7	76.9	56.1	20.76	3.705		
2,200.0	2,112.8	2,196.3	2,120.9	12.0	11.3	-115.89	-242.0	463.3	81.6	59.6	21.94	3.719		
2,300.0	2,207.3	2,296.2	2,216.1	12.7	12.0	-116.51	-256.4	489.9	86.2	63.1	23.11	3.732		
2,400.0	2,301.8	2,396.1	2,311.3	13.4	12.6	-117.06	-270.8	516.5	90.9	66.6	24.28	3.744		
2,500.0	2,396.2	2,496.0	2,406.5	14.1	13.3	-117.56	-285.2	543.1	95.6	70.2	25.46	3.756		
2,600.0	2,490.7	2,595.9	2,501.7	14.8	13.9	-118.01	-299.6	569.7	100.3	73.7	26.63	3.767		
2,700.0	2,585.2	2,695.8	2,596.9	15.5	14.6	-118.42	-314.0	596.4	105.0	77.2	27.80	3.778		
2,800.0	2,679.6	2,795.6	2,692.1	16.2	15.2	-118.79	-328.5	623.0	109.7	80.8	28.97	3.788		
2,900.0	2,774.1	2,895.5	2,787.2	16.9	15.8	-119.14	-342.9	649.6	114.4	84.3	30.14	3.797		
3,000.0	2,868.5	2,995.4	2,882.4	17.6	16.5	-119.45	-357.3	676.2	119.2	87.9	31.30	3.806		
3,100.0	2,963.0	3,095.3	2,977.6	18.3	17.1	-119.75	-371.7	702.8	123.9	91.4	32.47	3.815		
3,200.0	3,057.5	3,195.2	3,072.8	19.0	17.8	-120.02	-386.1	729.4	128.6	95.0	33.64	3.823		
3,300.0	3,151.9	3,295.1	3,168.0	19.7	18.4	-120.27	-400.5	756.0	133.3	98.5	34.81	3.831		
3,400.0	3,246.4	3,395.0	3,263.2	20.4	19.1	-120.51	-414.9	782.6	138.1	102.1	35.97	3.838		
3,500.0	3,340.9	3,494.9	3,358.4	21.1	19.7	-120.73	-429.3	809.2	142.8	105.6	37.14	3.845		
3,600.0	3,435.3	3,594.7	3,453.6	21.8	20.4	-120.93	-443.7	835.8	147.5	109.2	38.30	3.851		
3,700.0	3,529.8	3,694.6	3,548.8	22.5	21.0	-121.12	-458.2	862.4	152.2	112.8	39.47	3.858		
3,800.0	3,624.3	3,794.5	3,644.0	23.2	21.7	-121.30	-472.6	889.0	157.0	116.3	40.63	3.863		
3,900.0	3,718.7	3,894.4	3,739.2	23.9	22.3	-121.48	-487.0	915.7	161.7	119.9	41.80	3.869		
4,000.0	3,813.2	3,994.3	3,834.4	24.6	23.0	-121.64	-501.4	942.3	166.5	123.5	42.96	3.875		
4,100.0	3,907.7	4,094.2	3,929.6	25.3	23.6	-121.79	-515.8	968.9	171.2	127.1	44.13	3.880		
4,200.0	4,002.1	4,194.1	4,024.8	26.0	24.2	-121.93	-530.2	995.5	175.9	130.6	45.29	3.885		
4,300.0	4,096.6	4,293.9	4,119.9	26.7	24.9	-122.07	-544.6	1,022.1	180.7	134.2	46.45	3.889		
4,400.0	4,191.1	4,393.8	4,215.1	27.4	25.5	-122.20	-559.0	1,048.7	185.4	137.8	47.62	3.894		
4,500.0	4,285.5	4,493.7	4,310.3	28.1	26.2	-122.32	-573.4	1,075.3	190.2	141.4	48.78	3.898		
4,600.0	4,380.0	4,593.6	4,405.5	28.8	26.8	-122.44	-587.9	1,101.9	194.9	145.0	49.94	3.903		
4,700.0	4,474.5	4,693.5	4,500.7	29.5	27.5	-122.55	-602.3	1,128.5	199.7	148.5	51.11	3.907		
4,800.0	4,568.9	4,793.4	4,595.9	30.2	28.1	-122.65	-616.7	1,155.1	204.4	152.1	52.27	3.910		
4,900.0	4,663.4	4,893.3	4,691.1	30.9	28.8	-122.75	-631.1	1,181.7	209.1	155.7	53.43	3.914		
5,000.0	4,757.9	4,993.1	4,786.3	31.6	29.4	-122.85	-645.5	1,208.3	213.9	159.3	54.60	3.918		

CC - Min centre to center distance or convergent point, SF - min separation factor, ES - min ellipse separation

Company:	Caerus Oil and Gas LLC	Local Co-ordinate Reference:	Well NPR 24A-15 596
Project:	SEC.15-T5S-R96W	TVD Reference:	WELL @ 6453.0ft (Original Well Elev)
Reference Site:	NPR H15 596 North Pad Sec.15-T5S-R96W	MD Reference:	WELL @ 6453.0ft (Original Well Elev)
Site Error:	0.0 ft	North Reference:	True
Reference Well:	NPR 24A-15 596	Survey Calculation Method:	Minimum Curvature
Well Error:	0.0 ft	Output errors are at	2.00 sigma
Reference Wellbore	Wellbore #1	Database:	US_EDM
Reference Design:	Plan #2 (6-14-18)	Offset TVD Reference:	Offset Datum

Offset Design													Offset Site Error:	0.0 ft
Survey Program: 0-MWD													Offset Well Error:	0.0 ft
Reference		Offset		Semi Major Axis			Distance							Warning
Measured Depth (ft)	Vertical Depth (ft)	Measured Depth (ft)	Vertical Depth (ft)	Reference (ft)	Offset (ft)	Highside Toolface (°)	Offset Wellbore Centre +N/-S (ft)	+E/-W (ft)	Between Centres (ft)	Between Ellipses (ft)	Minimum Separation (ft)	Separation Factor		
5,100.0	4,852.3	5,093.0	4,881.5	32.3	30.1	-122.94	-659.9	1,235.0	218.6	162.9	55.76	3.921		
5,200.0	4,946.8	5,192.9	4,976.7	33.0	30.7	-123.03	-674.3	1,261.6	223.4	166.5	56.92	3.924		
5,300.0	5,041.3	5,292.8	5,071.9	33.7	31.4	-123.12	-688.7	1,288.2	228.1	170.0	58.09	3.928		
5,400.0	5,135.7	5,392.7	5,167.1	34.4	32.0	-123.20	-703.2	1,314.8	232.9	173.6	59.25	3.931		
5,500.0	5,230.2	5,492.6	5,262.3	35.1	32.6	-123.28	-717.6	1,341.4	237.6	177.2	60.41	3.934		
5,600.0	5,324.7	5,592.5	5,357.4	35.8	33.3	-123.35	-732.0	1,368.0	242.4	180.8	61.57	3.936		
5,668.6	5,389.5	5,661.0	5,422.7	36.2	33.7	-123.40	-741.9	1,386.2	245.6	183.3	62.37	3.938		
5,700.0	5,419.2	5,691.7	5,452.0	36.4	33.9	-123.42	-746.3	1,394.4	247.0	184.3	62.72	3.938		
5,800.0	5,515.0	5,786.2	5,542.9	36.9	34.4	-123.40	-758.6	1,417.1	250.8	187.2	63.58	3.944		
5,900.0	5,612.1	5,880.6	5,634.8	37.3	34.7	-123.38	-768.7	1,435.9	253.9	189.6	64.30	3.948		
6,000.0	5,710.4	5,974.9	5,727.7	37.6	35.0	-123.35	-776.7	1,450.6	256.3	191.4	64.87	3.950		
6,100.0	5,809.4	6,069.3	5,821.3	37.9	35.2	-123.33	-782.5	1,461.3	258.0	192.7	65.30	3.951		
6,200.0	5,909.1	6,163.7	5,915.3	38.0	35.4	-123.30	-786.1	1,467.9	259.0	193.4	65.59	3.949		
6,307.0	6,016.0	6,264.6	6,016.2	38.1	35.5	2.38	-787.4	1,470.4	259.3	193.5	65.79	3.941		
6,324.6	6,033.6	6,282.3	6,033.9	38.1	35.5	112.38	-787.4	1,470.4	259.3	193.5	65.79	3.941		
6,400.0	6,109.0	6,359.0	6,110.6	38.2	35.5	112.39	-787.7	1,469.7	259.3	193.4	65.90	3.935		
6,500.0	6,209.0	6,460.8	6,212.3	38.2	35.6	112.40	-788.5	1,467.4	259.3	193.3	66.00	3.929		
6,600.0	6,308.9	6,562.5	6,314.0	38.3	35.6	112.40	-790.0	1,463.3	259.3	193.3	66.06	3.926		
6,640.9	6,349.7	6,604.1	6,355.5	38.3	35.6	112.40	-790.8	1,461.1	259.3	193.3	66.07	3.925		
6,641.6	6,350.4	6,604.8	6,356.2	38.3	35.6	112.40	-790.8	1,461.1	259.3	193.3	66.07	3.925		
6,700.0	6,408.8	6,663.2	6,414.5	38.3	35.6	112.40	-792.0	1,457.9	259.3	193.2	66.08	3.924		
6,800.0	6,508.6	6,763.2	6,514.3	38.3	35.7	112.40	-794.0	1,452.4	259.3	193.2	66.11	3.923		
6,900.0	6,608.4	6,863.2	6,614.2	38.3	35.7	112.40	-796.0	1,447.0	259.3	193.2	66.14	3.921		
7,000.0	6,708.2	6,963.2	6,714.0	38.3	35.7	112.41	-797.9	1,441.5	259.3	193.2	66.17	3.919		
7,100.0	6,808.1	7,063.2	6,813.8	38.4	35.7	112.41	-799.9	1,436.0	259.3	193.1	66.21	3.917		
7,200.0	6,907.9	7,163.2	6,913.7	38.4	35.8	112.41	-801.9	1,430.6	259.3	193.1	66.25	3.915		
7,300.0	7,007.7	7,263.2	7,013.5	38.4	35.8	112.41	-803.9	1,425.1	259.4	193.1	66.30	3.912		
7,400.0	7,107.6	7,363.2	7,113.3	38.5	35.8	112.42	-805.9	1,419.6	259.4	193.0	66.35	3.909		
7,500.0	7,207.4	7,463.2	7,213.1	38.5	35.8	112.42	-807.9	1,414.1	259.4	193.0	66.40	3.906		
7,600.0	7,307.2	7,563.2	7,313.0	38.5	35.9	112.42	-809.9	1,408.7	259.4	192.9	66.45	3.903		
7,700.0	7,407.0	7,663.2	7,412.8	38.6	35.9	112.43	-811.9	1,403.2	259.4	192.9	66.51	3.900		
7,800.0	7,506.9	7,763.2	7,512.6	38.6	35.9	112.43	-813.9	1,397.7	259.4	192.8	66.58	3.896		
7,900.0	7,606.7	7,863.2	7,612.5	38.6	36.0	112.43	-815.9	1,392.3	259.4	192.7	66.64	3.892		
8,000.0	7,706.5	7,963.2	7,712.3	38.7	36.0	112.43	-817.9	1,386.8	259.4	192.7	66.71	3.888		
8,100.0	7,806.4	8,063.2	7,812.1	38.7	36.1	112.44	-819.9	1,381.3	259.4	192.6	66.79	3.884		
8,200.0	7,906.2	8,163.2	7,912.0	38.8	36.1	112.44	-821.8	1,375.8	259.4	192.5	66.86	3.879		
8,300.0	8,006.0	8,263.2	8,011.8	38.8	36.2	112.44	-823.8	1,370.4	259.4	192.5	66.95	3.875		
8,400.0	8,105.9	8,363.2	8,111.6	38.9	36.2	112.45	-825.8	1,364.9	259.4	192.4	67.03	3.870		
8,500.0	8,205.7	8,463.2	8,211.5	38.9	36.3	112.45	-827.8	1,359.4	259.4	192.3	67.12	3.865		
8,600.0	8,305.5	8,563.2	8,311.3	39.0	36.3	112.45	-829.8	1,354.0	259.4	192.2	67.21	3.860		
8,700.0	8,405.3	8,663.2	8,411.1	39.0	36.4	112.45	-831.8	1,348.5	259.4	192.1	67.30	3.854		
8,800.0	8,505.2	8,763.2	8,510.9	39.1	36.4	112.46	-833.8	1,343.0	259.4	192.0	67.40	3.849		
8,900.0	8,605.0	8,863.2	8,610.8	39.1	36.5	112.46	-835.8	1,337.5	259.4	191.9	67.51	3.843		
9,000.0	8,704.8	8,963.2	8,710.6	39.2	36.5	112.46	-837.8	1,332.1	259.4	191.8	67.61	3.837		
9,100.0	8,804.7	9,063.2	8,810.4	39.2	36.6	112.47	-839.8	1,326.6	259.4	191.7	67.72	3.831		
9,200.0	8,904.5	9,163.2	8,910.3	39.3	36.6	112.47	-841.8	1,321.1	259.4	191.6	67.83	3.825		
9,300.0	9,004.3	9,263.2	9,010.1	39.3	36.7	112.47	-843.8	1,315.6	259.4	191.5	67.95	3.818		
9,400.0	9,104.1	9,363.2	9,109.9	39.4	36.7	112.47	-845.8	1,310.2	259.4	191.4	68.07	3.812		
9,500.0	9,204.0	9,463.2	9,209.8	39.5	36.8	112.48	-847.7	1,304.7	259.5	191.3	68.19	3.805		
9,577.2	9,281.0	9,540.4	9,286.8	39.5	36.9	112.48	-849.3	1,300.5	259.5	191.2	68.29	3.799		

Company:	Caerus Oil and Gas LLC	Local Co-ordinate Reference:	Well NPR 24A-15 596
Project:	SEC.15-T5S-R96W	TVD Reference:	WELL @ 6453.0ft (Original Well Elev)
Reference Site:	NPR H15 596 North Pad Sec.15-T5S-R96W	MD Reference:	WELL @ 6453.0ft (Original Well Elev)
Site Error:	0.0 ft	North Reference:	True
Reference Well:	NPR 24A-15 596	Survey Calculation Method:	Minimum Curvature
Well Error:	0.0 ft	Output errors are at	2.00 sigma
Reference Wellbore	Wellbore #1	Database:	US_EDM
Reference Design:	Plan #2 (6-14-18)	Offset TVD Reference:	Offset Datum

Offset Design NPR H15 596 North Pad Sec.15-T5S-R96W - NPR 22C-15 596 - Wellbore #1 - Plan #1 (12-01-17)												Offset Site Error:	0.0 ft
Survey Program: 0-MWD												Offset Well Error:	0.0 ft
Reference		Offset		Semi Major Axis			Distance						Warning
Measured Depth (ft)	Vertical Depth (ft)	Measured Depth (ft)	Vertical Depth (ft)	Reference (ft)	Offset (ft)	Highside Toolface (°)	Offset Wellbore Centre +N/-S (ft)	+E/-W (ft)	Between Centres (ft)	Between Ellipses (ft)	Minimum Separation (ft)	Separation Factor	
0.0	0.0	0.0	0.0	0.0	0.0	-23.38	41.3	-17.9	45.0				
100.0	100.0	100.0	100.0	0.1	0.1	-23.38	41.3	-17.9	45.0	44.8	0.22	200.222	
200.0	200.0	200.0	200.0	0.3	0.3	-23.38	41.3	-17.9	45.0	44.3	0.67	66.741 CC, ES	
300.0	300.0	298.0	298.0	0.5	0.6	-152.45	42.4	-20.1	49.3	48.1	1.16	42.607	
400.0	399.6	394.5	394.1	0.8	0.8	-159.77	45.5	-26.8	62.8	61.0	1.72	36.508 SF	
500.0	498.8	488.0	486.9	1.1	1.1	-166.63	50.4	-37.5	86.4	84.1	2.32	37.250	
600.0	597.1	577.2	574.7	1.4	1.4	-171.56	57.0	-51.5	120.0	117.1	2.92	41.148	
700.0	694.3	661.1	656.6	1.9	1.7	-174.86	64.7	-68.1	163.0	159.5	3.50	46.576	
800.0	790.2	739.0	731.9	2.4	2.1	-177.07	73.2	-86.4	214.6	210.5	4.07	52.751	
838.4	826.5	767.2	758.9	2.7	2.3	-177.72	76.5	-93.7	236.4	232.2	4.28	55.232	
900.0	884.8	814.7	804.2	3.1	2.5	-178.70	82.5	-106.6	272.8	268.3	4.56	59.899	
1,000.0	979.2	895.1	880.9	3.7	3.0	-179.90	92.7	-128.5	332.1	327.1	4.97	66.863	
1,100.0	1,073.7	975.5	957.5	4.4	3.5	179.27	102.9	-150.5	391.5	386.1	5.40	72.504	
1,200.0	1,168.2	1,055.8	1,034.2	5.1	4.0	178.65	113.1	-172.4	450.8	445.0	5.84	77.147	
1,300.0	1,262.6	1,136.2	1,110.8	5.8	4.5	178.18	123.3	-194.4	510.2	503.9	6.32	80.763	
1,400.0	1,357.1	1,216.6	1,187.5	6.5	5.0	177.81	133.5	-216.3	569.7	562.9	6.78	83.994	
1,500.0	1,451.6	1,297.0	1,264.1	7.2	5.5	177.51	143.7	-238.3	629.1	621.8	7.26	86.637	
1,600.0	1,546.0	1,377.4	1,340.8	7.9	6.0	177.25	153.9	-260.2	688.6	680.8	7.75	88.855	
1,700.0	1,640.5	1,457.7	1,417.4	8.6	6.5	177.04	164.1	-282.1	748.0	739.8	8.24	90.755	

Company:	Caerus Oil and Gas LLC	Local Co-ordinate Reference:	Well NPR 24A-15 596
Project:	SEC.15-T5S-R96W	TVD Reference:	WELL @ 6453.0ft (Original Well Elev)
Reference Site:	NPR H15 596 North Pad Sec.15-T5S-R96W	MD Reference:	WELL @ 6453.0ft (Original Well Elev)
Site Error:	0.0 ft	North Reference:	True
Reference Well:	NPR 24A-15 596	Survey Calculation Method:	Minimum Curvature
Well Error:	0.0 ft	Output errors are at	2.00 sigma
Reference Wellbore	Wellbore #1	Database:	US_EDM
Reference Design:	Plan #2 (6-14-18)	Offset TVD Reference:	Offset Datum

Offset Design													Offset Site Error:	0.0 ft
Survey Program: 0-MWD													Offset Well Error:	0.0 ft
Reference		Offset		Semi Major Axis			Distance							Warning
Measured Depth (ft)	Vertical Depth (ft)	Measured Depth (ft)	Vertical Depth (ft)	Reference (ft)	Offset (ft)	Highside Toolface (°)	Offset Wellbore Centre +N/-S (ft)	+E/-W (ft)	Between Centres (ft)	Between Ellipses (ft)	Minimum Separation (ft)	Separation Factor		
0.0	0.0	0.0	0.0	0.0	0.0	-23.37	34.4	-14.9	37.5					
100.0	100.0	100.0	100.0	0.1	0.1	-23.37	34.4	-14.9	37.5	37.3	0.22	166.835		
200.0	200.0	200.0	200.0	0.3	0.3	-23.37	34.4	-14.9	37.5	36.8	0.67	55.612 CC, ES		
300.0	300.0	300.0	300.0	0.5	0.6	-150.92	34.4	-14.9	39.8	38.6	1.15	34.511		
400.0	399.6	397.8	397.8	0.8	0.8	-157.48	35.1	-17.3	48.6	47.0	1.68	29.004 SF		
500.0	498.8	493.4	493.1	1.1	1.0	-165.77	37.1	-24.3	67.1	64.8	2.26	29.695		
600.0	597.1	585.4	584.4	1.4	1.3	-172.24	40.3	-35.3	95.6	92.7	2.85	33.495		
700.0	694.3	672.7	670.3	1.9	1.5	-176.62	44.4	-49.7	133.7	130.3	3.44	38.866		
800.0	790.2	754.3	750.0	2.4	1.9	-179.54	49.3	-66.6	180.8	176.8	4.02	45.023		
838.4	826.5	784.0	778.8	2.7	2.0	-179.60	51.3	-73.5	201.1	196.8	4.23	47.512		
900.0	884.8	830.1	823.4	3.1	2.2	178.45	54.6	-85.1	235.1	230.6	4.50	52.222		
1,000.0	979.2	908.0	898.0	3.7	2.6	176.95	60.8	-106.6	292.5	287.6	4.96	59.014		
1,100.0	1,073.7	989.5	976.0	4.4	3.1	175.86	67.3	-129.2	350.3	344.9	5.40	64.835		
1,200.0	1,168.2	1,071.0	1,054.0	5.1	3.6	175.08	73.8	-151.9	408.1	402.2	5.87	69.577		
1,300.0	1,262.6	1,152.5	1,132.0	5.8	4.1	174.49	80.3	-174.6	466.0	459.6	6.34	73.528		
1,400.0	1,357.1	1,234.0	1,210.0	6.5	4.5	174.03	86.8	-197.2	523.9	517.0	6.84	76.590		
1,500.0	1,451.6	1,315.5	1,288.0	7.2	5.0	173.67	93.3	-219.9	581.7	574.4	7.33	79.314		
1,600.0	1,546.0	1,396.9	1,366.0	7.9	5.5	173.37	99.8	-242.6	639.7	631.8	7.84	81.581		
1,700.0	1,640.5	1,478.4	1,444.0	8.6	6.0	173.12	106.3	-265.2	697.6	689.2	8.35	83.498		
1,800.0	1,735.0	1,559.9	1,522.0	9.3	6.5	172.90	112.8	-287.9	755.5	746.6	8.87	85.148		

Offset Design		NPR H15 596 North Pad Sec.15-T5S-R96W - NPR 23A-15 596 - Wellbore #1 - Plan #1 (12-01-17)											Offset Site Error:		0.0 ft
Survey Program:		0-MWD											Offset Well Error:		0.0 ft
Reference		Offset		Semi Major Axis			Distance							Warning	
Measured Depth	Vertical Depth	Measured Depth	Vertical Depth	Reference	Offset	Highside Toolface	Offset Wellbore Centre		Between Centres	Between Ellipses	Minimum Separation	Separation Factor			
(ft)	(ft)	(ft)	(ft)	(ft)	(ft)	(°)	+N/-S (ft)	+E/-W (ft)	(ft)	(ft)	(ft)				
0.0	0.0	0.0	0.0	0.0	0.0	-23.40	27.5	-11.9	30.0						
100.0	100.0	100.0	100.0	0.1	0.1	-23.40	27.5	-11.9	30.0	29.8	0.22	133.498			
200.0	200.0	200.0	200.0	0.3	0.3	-23.40	27.5	-11.9	30.0	29.3	0.67	44.499	CC, ES		
300.0	300.0	300.0	300.0	0.5	0.6	-151.40	27.5	-11.9	32.3	31.1	1.15	28.004			
400.0	399.6	399.6	399.6	0.8	0.8	-156.79	27.5	-11.9	39.3	37.7	1.67	23.505	SF		
500.0	498.8	496.9	496.8	1.1	1.0	-164.25	27.8	-14.4	53.4	51.1	2.22	23.981			
600.0	597.1	591.3	591.0	1.4	1.2	-171.62	28.6	-21.4	76.8	74.0	2.80	27.414			
700.0	694.3	681.6	680.6	1.9	1.4	-177.04	29.8	-32.5	109.9	106.5	3.38	32.468			
800.0	790.2	766.9	764.6	2.4	1.7	179.23	31.4	-46.8	152.0	148.0	3.96	38.351			
838.4	826.5	800.0	797.1	2.7	1.8	178.06	32.1	-53.4	170.4	166.2	4.19	40.718			
900.0	884.8	846.8	842.7	3.1	2.0	176.65	33.2	-63.6	201.7	197.2	4.46	45.242			
1,000.0	979.2	922.8	916.3	3.7	2.4	174.76	35.3	-82.6	255.1	250.1	4.92	51.808			
1,100.0	1,073.7	1,001.4	991.7	4.4	2.8	173.21	37.7	-104.7	311.1	305.7	5.41	57.460			
1,200.0	1,168.2	1,083.7	1,070.6	5.1	3.2	172.05	40.2	-128.1	367.6	361.7	5.90	62.273			
1,300.0	1,262.6	1,166.1	1,149.5	5.8	3.7	171.20	42.8	-151.5	424.1	417.7	6.41	66.186			
1,400.0	1,357.1	1,248.4	1,228.4	6.5	4.2	170.55	45.4	-174.9	480.7	473.7	6.92	69.454			
1,500.0	1,451.6	1,330.8	1,307.3	7.2	4.6	170.04	47.9	-198.3	537.3	529.8	7.46	72.028			
1,600.0	1,546.0	1,413.1	1,386.2	7.9	5.1	169.62	50.5	-221.7	593.9	585.9	8.00	74.280			
1,700.0	1,640.5	1,495.5	1,465.1	8.6	5.6	169.28	53.0	-245.1	650.5	642.0	8.54	76.169			
1,800.0	1,735.0	1,577.8	1,544.1	9.3	6.1	168.99	55.6	-268.5	707.2	698.1	9.09	77.776			
1,900.0	1,829.4	1,660.2	1,623.0	10.0	6.6	168.75	58.2	-291.9	763.9	754.2	9.65	79.162			

Company:	Caerus Oil and Gas LLC	Local Co-ordinate Reference:	Well NPR 24A-15 596
Project:	SEC.15-T5S-R96W	TVD Reference:	WELL @ 6453.0ft (Original Well Elev)
Reference Site:	NPR H15 596 North Pad Sec.15-T5S-R96W	MD Reference:	WELL @ 6453.0ft (Original Well Elev)
Site Error:	0.0 ft	North Reference:	True
Reference Well:	NPR 24A-15 596	Survey Calculation Method:	Minimum Curvature
Well Error:	0.0 ft	Output errors are at	2.00 sigma
Reference Wellbore	Wellbore #1	Database:	US_EDM
Reference Design:	Plan #2 (6-14-18)	Offset TVD Reference:	Offset Datum

Offset Design													Offset Site Error:	0.0 ft
Survey Program: 0-MWD													Offset Well Error:	0.0 ft
Reference		Offset		Semi Major Axis			Distance							Warning
Measured Depth (ft)	Vertical Depth (ft)	Measured Depth (ft)	Vertical Depth (ft)	Reference (ft)	Offset (ft)	Highside Toolface (°)	Offset Wellbore Centre +N/-S (ft)	+E/-W (ft)	Between Centres (ft)	Between Ellipses (ft)	Minimum Separation (ft)	Separation Factor		
0.0	0.0	0.0	0.0	0.0	0.0	-23.38	20.7	-8.9	22.5					
100.0	100.0	100.0	100.0	0.1	0.1	-23.38	20.7	-8.9	22.5	22.3	0.22	100.111		
200.0	200.0	200.0	200.0	0.3	0.3	-23.38	20.7	-8.9	22.5	21.8	0.67	33.370 CC, ES		
300.0	300.0	299.4	299.3	0.5	0.6	-157.37	20.5	-11.5	25.9	24.7	1.15	22.463		
400.0	399.6	397.3	397.0	0.8	0.8	-172.17	20.0	-19.1	38.1	36.3	1.72	22.121 SF		
500.0	498.8	492.5	491.4	1.1	1.1	177.40	19.2	-31.2	60.6	58.2	2.32	26.079		
600.0	597.1	583.7	581.2	1.4	1.4	171.44	18.1	-47.3	93.0	90.0	2.93	31.761		
700.0	694.3	670.1	665.3	1.9	1.8	167.92	16.8	-66.4	134.4	130.8	3.53	38.036		
800.0	790.2	752.6	745.0	2.4	2.2	165.62	15.3	-88.0	183.8	179.7	4.15	44.282		
838.4	826.5	785.0	776.2	2.7	2.4	164.99	14.7	-96.9	204.4	200.0	4.38	46.669		
900.0	884.8	836.8	825.9	3.1	2.6	164.47	13.8	-111.0	237.8	233.1	4.68	50.858		
1,000.0	979.2	920.7	906.7	3.7	3.1	163.89	12.2	-133.9	292.1	286.9	5.18	56.354		
1,100.0	1,073.7	1,004.7	987.4	4.4	3.6	163.49	10.7	-156.8	346.4	340.7	5.72	60.593		
1,200.0	1,168.2	1,088.6	1,068.2	5.1	4.1	163.20	9.1	-179.7	400.7	394.5	6.27	63.923		
1,300.0	1,262.6	1,172.5	1,148.9	5.8	4.5	162.97	7.6	-202.6	455.1	448.2	6.85	66.459		
1,400.0	1,357.1	1,256.5	1,229.6	6.5	5.0	162.80	6.1	-225.5	509.4	502.0	7.42	68.661		
1,500.0	1,451.6	1,340.4	1,310.4	7.2	5.5	162.66	4.5	-248.4	563.7	555.7	8.01	70.414		
1,600.0	1,546.0	1,424.4	1,391.1	7.9	6.0	162.54	3.0	-271.3	618.1	609.5	8.60	71.866		
1,700.0	1,640.5	1,508.3	1,471.9	8.6	6.5	162.45	1.4	-294.2	672.4	663.2	9.20	73.085		
1,800.0	1,735.0	1,592.3	1,552.6	9.3	7.0	162.36	-0.1	-317.1	726.8	717.0	9.81	74.118		
1,900.0	1,829.4	1,676.2	1,633.4	10.0	7.5	162.29	-1.7	-340.0	781.1	770.7	10.41	75.002		

Company:	Caerus Oil and Gas LLC	Local Co-ordinate Reference:	Well NPR 24A-15 596
Project:	SEC.15-T5S-R96W	TVD Reference:	WELL @ 6453.0ft (Original Well Elev)
Reference Site:	NPR H15 596 North Pad Sec.15-T5S-R96W	MD Reference:	WELL @ 6453.0ft (Original Well Elev)
Site Error:	0.0 ft	North Reference:	True
Reference Well:	NPR 24A-15 596	Survey Calculation Method:	Minimum Curvature
Well Error:	0.0 ft	Output errors are at	2.00 sigma
Reference Wellbore	Wellbore #1	Database:	US_EDM
Reference Design:	Plan #2 (6-14-18)	Offset TVD Reference:	Offset Datum

Offset Design NPR H15 596 North Pad Sec.15-T5S-R96W - NPR 23C-15 596 - Wellbore #1 - Plan #2 (6-14-18)												Offset Site Error:	0.0 ft
Survey Program: 0-MWD												Offset Well Error:	0.0 ft
Reference		Offset		Semi Major Axis			Distance						Warning
Measured Depth (ft)	Vertical Depth (ft)	Measured Depth (ft)	Vertical Depth (ft)	Reference (ft)	Offset (ft)	Highside Toolface (°)	Offset Wellbore Centre +N/-S (ft)	+E/-W (ft)	Between Centres (ft)	Between Ellipses (ft)	Minimum Separation (ft)	Separation Factor	
0.0	0.0	0.0	0.0	0.0	0.0	-23.35	13.8	-5.9	15.0	15.0	0.00	N/A	
100.0	100.0	100.0	100.0	0.1	0.1	-23.35	13.8	-5.9	15.0	14.8	0.22	66.724	
200.0	200.0	200.0	200.0	0.3	0.3	-23.35	13.8	-5.9	15.0	14.3	0.67	22.241 CC, ES	
300.0	300.0	300.0	300.0	0.5	0.6	-153.43	13.8	-5.9	17.3	16.1	1.15	14.982 SF	
400.0	399.6	399.2	399.2	0.8	0.8	-167.19	12.9	-8.4	25.4	23.7	1.68	15.114	
500.0	498.8	496.6	496.3	1.1	1.0	179.06	10.2	-15.4	42.1	39.8	2.25	18.733	
600.0	597.1	591.1	590.0	1.4	1.2	170.53	6.0	-26.7	68.1	65.3	2.84	24.026	
700.0	694.3	681.7	679.1	1.9	1.6	165.43	0.4	-41.5	103.0	99.6	3.45	29.888	
800.0	790.2	770.4	765.8	2.4	1.9	162.27	-6.2	-59.3	145.6	141.5	4.08	35.657	
838.4	826.5	804.4	799.0	2.7	2.1	161.52	-8.8	-66.2	163.3	159.0	4.32	37.773	
900.0	884.8	858.8	852.1	3.1	2.3	160.91	-12.9	-77.2	192.3	187.6	4.65	41.378	
1,000.0	979.2	947.0	938.2	3.7	2.7	160.23	-19.7	-95.2	239.2	234.0	5.20	46.001	
1,100.0	1,073.7	1,035.3	1,024.4	4.4	3.1	159.78	-26.4	-113.1	286.2	280.4	5.78	49.492	
1,200.0	1,168.2	1,123.5	1,110.5	5.1	3.5	159.45	-33.1	-131.0	333.2	326.8	6.38	52.209	
1,300.0	1,262.6	1,211.8	1,196.7	5.8	3.9	159.20	-39.8	-149.0	380.2	373.2	7.01	54.257	
1,400.0	1,357.1	1,300.0	1,282.8	6.5	4.3	159.01	-46.5	-166.9	427.3	419.6	7.64	55.942	
1,500.0	1,451.6	1,388.3	1,369.0	7.2	4.7	158.86	-53.2	-184.8	474.3	466.0	8.28	57.298	
1,600.0	1,546.0	1,476.5	1,455.1	7.9	5.2	158.73	-60.0	-202.8	521.3	512.4	8.92	58.415	
1,700.0	1,640.5	1,564.8	1,541.3	8.6	5.6	158.63	-66.7	-220.7	568.3	558.7	9.58	59.348	
1,800.0	1,735.0	1,653.0	1,627.4	9.3	6.0	158.54	-73.4	-238.7	615.3	605.1	10.23	60.134	
1,900.0	1,829.4	1,741.3	1,713.6	10.0	6.4	158.46	-80.1	-256.6	662.4	651.5	10.89	60.806	
2,000.0	1,923.9	1,829.5	1,799.7	10.6	6.8	158.39	-86.8	-274.5	709.4	697.8	11.56	61.384	
2,100.0	2,018.4	1,917.8	1,885.8	11.3	7.2	158.33	-93.6	-292.5	756.4	744.2	12.22	61.886	

Company:	Caerus Oil and Gas LLC	Local Co-ordinate Reference:	Well NPR 24A-15 596
Project:	SEC.15-T5S-R96W	TVD Reference:	WELL @ 6453.0ft (Original Well Elev)
Reference Site:	NPR H15 596 North Pad Sec.15-T5S-R96W	MD Reference:	WELL @ 6453.0ft (Original Well Elev)
Site Error:	0.0 ft	North Reference:	True
Reference Well:	NPR 24A-15 596	Survey Calculation Method:	Minimum Curvature
Well Error:	0.0 ft	Output errors are at	2.00 sigma
Reference Wellbore	Wellbore #1	Database:	US_EDM
Reference Design:	Plan #2 (6-14-18)	Offset TVD Reference:	Offset Datum

Offset Design													Offset Site Error:	0.0 ft
Survey Program: 0-MWD													Offset Well Error:	0.0 ft
Reference		Offset		Semi Major Axis			Distance						Warning	
Measured Depth (ft)	Vertical Depth (ft)	Measured Depth (ft)	Vertical Depth (ft)	Reference (ft)	Offset (ft)	Highside Toolface (°)	Offset Wellbore Centre +N/-S (ft)	+E/-W (ft)	Between Centres (ft)	Between Ellipses (ft)	Minimum Separation (ft)	Separation Factor		
0.0	0.0	0.0	0.0	0.0	0.0	-23.25	6.9	-3.0	7.5	7.5	0.00	N/A		
100.0	100.0	100.0	100.0	0.1	0.1	-23.25	6.9	-3.0	7.5	7.3	0.22	33.337		
200.0	200.0	200.0	200.0	0.3	0.3	-23.25	6.9	-3.0	7.5	6.8	0.67	11.112 CC, ES		
300.0	300.0	300.0	300.0	0.5	0.6	-156.77	6.9	-3.0	9.8	8.7	1.16	8.496 SF		
400.0	399.6	399.6	399.6	0.8	0.8	-167.01	6.9	-3.0	17.3	15.6	1.69	10.261		
500.0	498.8	498.3	498.2	1.1	1.0	-177.10	5.6	-5.1	31.0	28.7	2.23	13.911		
600.0	597.1	594.8	594.5	1.4	1.2	174.02	1.7	-11.4	52.3	49.6	2.78	18.847		
700.0	694.3	688.4	687.3	1.9	1.4	167.91	-4.5	-21.5	81.9	78.5	3.36	24.353		
800.0	790.2	778.1	775.6	2.4	1.7	163.71	-12.6	-34.8	119.3	115.3	3.99	29.928		
838.4	826.5	811.3	808.1	2.7	1.8	162.43	-16.1	-40.6	135.7	131.4	4.24	32.033		
900.0	884.8	863.6	859.0	3.1	2.1	160.82	-22.3	-50.7	163.4	158.8	4.58	35.647		
1,000.0	979.2	951.2	944.0	3.7	2.4	158.65	-33.6	-69.2	209.7	204.5	5.19	40.372		
1,100.0	1,073.7	1,039.6	1,029.6	4.4	2.9	157.24	-45.0	-87.8	256.2	250.4	5.83	43.935		
1,200.0	1,168.2	1,128.0	1,115.3	5.1	3.3	156.26	-56.4	-106.4	302.8	296.3	6.50	46.604		
1,300.0	1,262.6	1,216.4	1,200.9	5.8	3.7	155.55	-67.8	-125.0	349.4	342.3	7.18	48.654		
1,400.0	1,357.1	1,304.8	1,286.5	6.5	4.2	155.00	-79.2	-143.7	396.1	388.2	7.89	50.218		
1,500.0	1,451.6	1,393.1	1,372.2	7.2	4.7	154.57	-90.6	-162.3	442.8	434.2	8.60	51.478		
1,600.0	1,546.0	1,481.5	1,457.8	7.9	5.1	154.22	-101.9	-180.9	489.5	480.2	9.32	52.496		
1,700.0	1,640.5	1,569.9	1,543.5	8.6	5.6	153.93	-113.3	-199.5	536.2	526.2	10.05	53.333		
1,800.0	1,735.0	1,658.3	1,629.1	9.3	6.0	153.68	-124.7	-218.2	583.0	572.2	10.79	54.030		
1,900.0	1,829.4	1,746.7	1,714.8	10.0	6.5	153.48	-136.1	-236.8	629.7	618.2	11.53	54.618		
2,000.0	1,923.9	1,835.0	1,800.4	10.6	7.0	153.30	-147.5	-255.4	676.5	664.2	12.27	55.119		
2,100.0	2,018.4	1,923.4	1,886.1	11.3	7.4	153.14	-158.9	-274.0	723.2	710.2	13.02	55.550		
2,200.0	2,112.8	2,011.8	1,971.7	12.0	7.9	153.01	-170.3	-292.7	770.0	756.2	13.77	55.924		

Company:	Caerus Oil and Gas LLC	Local Co-ordinate Reference:	Well NPR 24A-15 596
Project:	SEC.15-T5S-R96W	TVD Reference:	WELL @ 6453.0ft (Original Well Elev)
Reference Site:	NPR H15 596 North Pad Sec.15-T5S-R96W	MD Reference:	WELL @ 6453.0ft (Original Well Elev)
Site Error:	0.0 ft	North Reference:	True
Reference Well:	NPR 24A-15 596	Survey Calculation Method:	Minimum Curvature
Well Error:	0.0 ft	Output errors are at	2.00 sigma
Reference Wellbore	Wellbore #1	Database:	US_EDM
Reference Design:	Plan #2 (6-14-18)	Offset TVD Reference:	Offset Datum

NPR H15 596 South Pad Sec.15-T5S-R96W - NPR 11A-14 596 - Wellbore #1 - Plan #1 (11-30-17)														Offset Site Error:	0.0 ft
Survey Program:		0-MWD												Offset Well Error:	0.0 ft
Reference		Offset		Semi Major Axis			Distance							Warning	
Measured Depth	Vertical Depth	Measured Depth	Vertical Depth	Reference	Offset	Highside Toolface	Offset Wellbore Centre		Between Centres	Between Ellipses	Minimum Separation	Separation Factor			
(ft)	(ft)	(ft)	(ft)	(ft)	(ft)	(°)	+N/-S (ft)	+E/-W (ft)	(ft)	(ft)	(ft)				
0.0	0.0	0.0	0.0	0.0	0.0	-21.54	287.2	-113.4	308.8						
100.0	100.0	100.0	100.0	0.1	0.1	-21.54	287.2	-113.4	308.8	308.6	0.22	1,373.833			
200.0	200.0	200.0	200.0	0.3	0.3	-21.54	287.2	-113.4	308.8	308.1	0.67	457.944	CC, ES		
300.0	300.0	300.0	300.0	0.5	0.6	-147.41	287.2	-113.4	311.0	309.8	1.15	270.613			
400.0	399.6	399.6	399.6	0.8	0.8	-148.07	287.2	-113.4	317.6	316.0	1.66	191.597			
500.0	498.8	498.8	498.8	1.1	1.0	-149.09	287.2	-113.4	328.8	326.6	2.19	149.874			
600.0	597.1	590.1	590.0	1.4	1.2	-149.96	288.9	-112.0	345.6	342.8	2.74	126.003			
700.0	694.3	680.0	679.8	1.9	1.4	-150.38	293.8	-108.0	368.9	365.6	3.33	110.925			
800.0	790.2	768.1	767.2	2.4	1.6	-150.39	301.7	-101.5	398.6	394.6	3.95	100.935			
838.4	826.5	800.0	798.8	2.7	1.7	-150.29	305.4	-98.5	411.6	407.4	4.20	98.102			
900.0	884.8	854.1	852.1	3.1	1.9	-150.35	312.5	-92.6	433.5	429.0	4.56	95.104			
1,000.0	979.2	938.8	934.9	3.7	2.2	-150.05	326.0	-81.5	470.5	465.3	5.19	90.694			
1,100.0	1,073.7	1,021.9	1,015.4	4.4	2.5	-149.40	341.9	-68.4	509.2	503.3	5.88	86.600			
1,200.0	1,168.2	1,100.0	1,090.2	5.1	2.9	-148.52	359.4	-54.0	549.7	543.1	6.62	83.037			
1,300.0	1,262.6	1,182.5	1,168.0	5.8	3.4	-147.38	380.4	-36.8	592.0	584.5	7.46	79.354			
1,400.0	1,357.1	1,259.5	1,239.7	6.5	3.9	-146.15	402.3	-18.7	636.3	627.9	8.34	76.271			
1,500.0	1,451.6	1,334.2	1,307.9	7.2	4.4	-144.85	425.7	0.5	682.5	673.3	9.27	73.657			
1,600.0	1,546.0	1,400.0	1,367.1	7.9	4.9	-143.63	448.0	18.8	730.9	720.7	10.19	71.756			
1,700.0	1,640.5	1,476.1	1,434.1	8.6	5.6	-142.17	475.7	41.6	781.3	770.1	11.24	69.523	SF		

Company:	Caerus Oil and Gas LLC	Local Co-ordinate Reference:	Well NPR 24A-15 596
Project:	SEC.15-T5S-R96W	TVD Reference:	WELL @ 6453.0ft (Original Well Elev)
Reference Site:	NPR H15 596 North Pad Sec.15-T5S-R96W	MD Reference:	WELL @ 6453.0ft (Original Well Elev)
Site Error:	0.0 ft	North Reference:	True
Reference Well:	NPR 24A-15 596	Survey Calculation Method:	Minimum Curvature
Well Error:	0.0 ft	Output errors are at	2.00 sigma
Reference Wellbore	Wellbore #1	Database:	US_EDM
Reference Design:	Plan #2 (6-14-18)	Offset TVD Reference:	Offset Datum

Offset Design													Offset Site Error:		0.0 ft
Survey Program: 0-MWD													Offset Well Error:		0.0 ft
Reference		Offset		Semi Major Axis			Distance						Warning		
Measured Depth	Vertical Depth	Measured Depth	Vertical Depth	Reference	Offset	Highside Toolface	Offset Wellbore Centre	Between Centres	Between Ellipses	Minimum Separation	Separation Factor				
(ft)	(ft)	(ft)	(ft)	(ft)	(ft)	(°)	+N/-S (ft)	+E/-W (ft)	(ft)	(ft)	(ft)				
0.0	0.0	0.0	0.0	0.0	0.0	-21.49	280.4	-110.4	301.4						
100.0	100.0	100.0	100.0	0.1	0.1	-21.49	280.4	-110.4	301.4	301.1	0.22	1,340.767			
200.0	200.0	200.0	200.0	0.3	0.3	-21.49	280.4	-110.4	301.4	300.7	0.67	446.922	CC, ES		
300.0	300.0	293.6	293.6	0.5	0.6	-146.94	282.1	-108.8	304.6	303.5	1.14	267.491			
400.0	399.6	386.6	386.3	0.8	0.8	-146.38	287.0	-104.2	314.3	312.7	1.66	189.657			
500.0	498.8	478.4	477.4	1.1	1.0	-145.50	295.1	-96.5	330.5	328.2	2.23	148.368			
600.0	597.1	568.5	566.2	1.4	1.3	-144.39	306.2	-86.1	353.0	350.1	2.86	123.626			
700.0	694.3	656.3	652.0	1.9	1.7	-143.09	319.9	-73.2	381.7	378.1	3.55	107.506			
800.0	790.2	741.5	734.3	2.4	2.1	-141.69	335.9	-58.1	416.5	412.2	4.32	96.400			
838.4	826.5	773.4	764.8	2.7	2.3	-141.13	342.5	-51.8	431.4	426.7	4.64	93.061			
900.0	884.8	823.9	812.8	3.1	2.5	-140.66	353.9	-41.1	456.4	451.2	5.13	89.019			
1,000.0	979.2	900.0	884.4	3.7	3.0	-139.77	372.7	-23.4	498.6	492.6	5.96	83.713			
1,100.0	1,073.7	982.3	960.6	4.4	3.6	-138.59	395.3	-2.0	542.8	535.9	6.90	78.659			
1,200.0	1,168.2	1,059.9	1,031.2	5.1	4.2	-137.33	418.8	20.2	589.1	581.2	7.88	74.767			
1,300.0	1,262.6	1,144.7	1,107.5	5.8	4.9	-135.99	445.7	45.5	636.7	627.8	8.95	71.171			
1,400.0	1,357.1	1,231.7	1,185.8	6.5	5.7	-134.80	473.2	71.5	684.6	674.5	10.03	68.269			
1,500.0	1,451.6	1,318.6	1,264.1	7.2	6.4	-133.76	500.7	97.5	732.6	721.5	11.12	65.861			
1,600.0	1,546.0	1,405.6	1,342.4	7.9	7.1	-132.85	528.3	123.5	780.9	768.6	12.23	63.859	SF		

Company:	Caerus Oil and Gas LLC	Local Co-ordinate Reference:	Well NPR 24A-15 596
Project:	SEC.15-T5S-R96W	TVD Reference:	WELL @ 6453.0ft (Original Well Elev)
Reference Site:	NPR H15 596 North Pad Sec.15-T5S-R96W	MD Reference:	WELL @ 6453.0ft (Original Well Elev)
Site Error:	0.0 ft	North Reference:	True
Reference Well:	NPR 24A-15 596	Survey Calculation Method:	Minimum Curvature
Well Error:	0.0 ft	Output errors are at	2.00 sigma
Reference Wellbore	Wellbore #1	Database:	US_EDM
Reference Design:	Plan #2 (6-14-18)	Offset TVD Reference:	Offset Datum

Offset Design													Offset Site Error:	0.0 ft
Survey Program: 0-MWD													Offset Well Error:	0.0 ft
Reference		Offset		Semi Major Axis			Distance							Warning
Measured Depth (ft)	Vertical Depth (ft)	Measured Depth (ft)	Vertical Depth (ft)	Reference (ft)	Offset (ft)	Highside Toolface (°)	Offset Wellbore Centre +N/-S (ft)	+E/-W (ft)	Between Centres (ft)	Between Ellipses (ft)	Minimum Separation (ft)	Separation Factor		
0.0	0.0	0.0	0.0	0.0	0.0	-21.44	273.4	-107.4	293.8					
100.0	100.0	100.0	100.0	0.1	0.1	-21.44	273.4	-107.4	293.8	293.5	0.22	1,307.006		
200.0	200.0	200.0	200.0	0.3	0.3	-21.44	273.4	-107.4	293.8	293.1	0.67	435.669 CC, ES		
300.0	300.0	300.0	300.0	0.5	0.6	-147.32	273.4	-107.4	296.0	294.8	1.15	257.560		
400.0	399.6	394.5	394.5	0.8	0.8	-147.54	275.0	-105.6	303.4	301.8	1.65	184.055		
500.0	498.8	488.4	488.1	1.1	1.0	-147.33	279.7	-100.5	317.0	314.8	2.19	144.733		
600.0	597.1	581.0	580.0	1.4	1.2	-146.74	287.3	-92.1	336.5	333.8	2.78	121.047		
700.0	694.3	671.8	669.5	1.9	1.5	-145.84	297.6	-80.6	362.0	358.6	3.43	105.409		
800.0	790.2	760.4	756.0	2.4	1.9	-144.70	310.5	-66.4	393.2	389.1	4.17	94.397		
838.4	826.5	793.8	788.3	2.7	2.0	-144.21	316.0	-60.3	406.7	402.2	4.46	91.121		
900.0	884.8	846.7	839.2	3.1	2.3	-143.75	325.6	-49.7	429.3	424.4	4.93	87.031		
1,000.0	979.2	931.2	919.8	3.7	2.8	-142.74	342.7	-30.7	467.4	461.6	5.76	81.190		
1,100.0	1,073.7	1,013.8	997.3	4.4	3.3	-141.47	361.8	-9.6	507.2	500.6	6.66	76.177		
1,200.0	1,168.2	1,094.2	1,071.5	5.1	3.8	-140.05	382.6	13.4	549.0	541.3	7.63	71.923		
1,300.0	1,262.6	1,181.4	1,151.0	5.8	4.5	-138.48	406.6	39.9	592.1	583.4	8.70	68.046		
1,400.0	1,357.1	1,270.3	1,232.1	6.5	5.2	-137.08	431.1	67.1	635.7	625.9	9.81	64.779		
1,500.0	1,451.6	1,359.3	1,313.2	7.2	5.9	-135.85	455.6	94.2	679.5	668.6	10.93	62.163		
1,600.0	1,546.0	1,448.3	1,394.3	7.9	6.6	-134.77	480.1	121.3	723.5	711.5	12.06	59.999		
1,700.0	1,640.5	1,537.3	1,475.5	8.6	7.4	-133.82	504.6	148.5	767.8	754.6	13.19	58.190 SF		

Company:	Caerus Oil and Gas LLC	Local Co-ordinate Reference:	Well NPR 24A-15 596
Project:	SEC.15-T5S-R96W	TVD Reference:	WELL @ 6453.0ft (Original Well Elev)
Reference Site:	NPR H15 596 North Pad Sec.15-T5S-R96W	MD Reference:	WELL @ 6453.0ft (Original Well Elev)
Site Error:	0.0 ft	North Reference:	True
Reference Well:	NPR 24A-15 596	Survey Calculation Method:	Minimum Curvature
Well Error:	0.0 ft	Output errors are at	2.00 sigma
Reference Wellbore	Wellbore #1	Database:	US_EDM
Reference Design:	Plan #2 (6-14-18)	Offset TVD Reference:	Offset Datum

Offset Design		NPR H15 596 South Pad Sec.15-T5S-R96W - NPR 11D-14 596 - Wellbore #1 - Plan #1 (11-30-17)											Offset Site Error:		0.0 ft		
Survey Program:		0-MWD													Offset Well Error:		0.0 ft
Reference		Offset		Semi Major Axis			Distance										
Measured Depth	Vertical Depth	Measured Depth	Vertical Depth	Reference	Offset	Highside Toolface	Offset Wellbore Centre		Between Centres	Between Ellipses	Minimum Separation	Separation Factor	Warning				
(ft)	(ft)	(ft)	(ft)	(ft)	(ft)	(°)	+N/-S (ft)	+E/-W (ft)	(ft)	(ft)	(ft)						
0.0	0.0	0.0	0.0	0.0	0.0	-21.39	266.6	-104.4	286.3								
100.0	100.0	100.0	100.0	0.1	0.1	-21.39	266.6	-104.4	286.3	286.1	0.22	1,273.883					
200.0	200.0	200.0	200.0	0.3	0.3	-21.39	266.6	-104.4	286.3	285.7	0.67	424.628	CC, ES				
300.0	300.0	300.0	300.0	0.5	0.6	-147.28	266.6	-104.4	288.5	287.4	1.15	251.088					
400.0	399.6	399.6	399.6	0.8	0.8	-148.00	266.6	-104.4	295.2	293.5	1.66	178.055					
500.0	498.8	495.3	495.2	1.1	1.0	-148.62	268.0	-102.5	306.9	304.7	2.19	140.389					
600.0	597.1	590.1	589.8	1.4	1.2	-148.74	272.3	-96.9	324.2	321.5	2.75	117.973					
700.0	694.3	683.8	682.7	1.9	1.5	-148.39	279.2	-87.6	347.0	343.7	3.36	103.276					
800.0	790.2	775.7	773.3	2.4	1.8	-147.66	288.7	-74.9	375.2	371.2	4.04	92.845					
838.4	826.5	810.5	807.4	2.7	1.9	-147.30	292.9	-69.2	387.4	383.1	4.32	89.637					
900.0	884.8	865.9	861.3	3.1	2.1	-146.93	300.4	-59.1	407.9	403.1	4.75	85.828					
1,000.0	979.2	954.7	947.0	3.7	2.5	-145.95	314.5	-40.4	442.0	436.5	5.53	79.987					
1,100.0	1,073.7	1,042.1	1,030.0	4.4	3.0	-144.63	330.6	-18.8	477.4	471.0	6.40	74.640					
1,200.0	1,168.2	1,127.5	1,110.1	5.1	3.5	-143.05	348.6	5.2	514.2	506.9	7.35	69.944					
1,300.0	1,262.6	1,215.6	1,191.4	5.8	4.1	-141.30	368.9	32.4	552.5	544.1	8.41	65.684					
1,400.0	1,357.1	1,306.5	1,275.1	6.5	4.8	-139.68	390.0	60.7	591.4	581.9	9.53	62.057					
1,500.0	1,451.6	1,397.4	1,358.9	7.2	5.5	-138.25	411.1	89.0	630.6	619.9	10.67	59.123					
1,600.0	1,546.0	1,488.3	1,442.7	7.9	6.2	-136.99	432.3	117.3	670.1	658.3	11.82	56.710					
1,700.0	1,640.5	1,579.2	1,526.4	8.6	6.9	-135.87	453.4	145.5	709.9	696.9	12.98	54.707					
1,800.0	1,735.0	1,670.1	1,610.2	9.3	7.6	-134.87	474.5	173.8	749.9	735.7	14.14	53.026					
1,900.0	1,829.4	1,761.0	1,693.9	10.0	8.3	-133.96	495.7	202.1	790.0	774.7	15.31	51.597	SF				

Company:	Caerus Oil and Gas LLC	Local Co-ordinate Reference:	Well NPR 24A-15 596
Project:	SEC.15-T5S-R96W	TVD Reference:	WELL @ 6453.0ft (Original Well Elev)
Reference Site:	NPR H15 596 North Pad Sec.15-T5S-R96W	MD Reference:	WELL @ 6453.0ft (Original Well Elev)
Site Error:	0.0 ft	North Reference:	True
Reference Well:	NPR 24A-15 596	Survey Calculation Method:	Minimum Curvature
Well Error:	0.0 ft	Output errors are at	2.00 sigma
Reference Wellbore	Wellbore #1	Database:	US_EDM
Reference Design:	Plan #2 (6-14-18)	Offset TVD Reference:	Offset Datum

NPR H15 596 South Pad Sec.15-T5S-R96W - NPR 12A-14 596 - Wellbore #1 - Plan #1 (11-30-17)													Offset Site Error:	0.0 ft
Survey Program:		0-MWVD											Offset Well Error:	0.0 ft
Reference		Offset		Semi Major Axis			Distance						Warning	
Measured Depth	Vertical Depth	Measured Depth	Vertical Depth	Reference	Offset	Highside Toolface	Offset Wellbore Centre		Between Centres	Between Ellipses	Minimum Separation	Separation Factor		
(ft)	(ft)	(ft)	(ft)	(ft)	(ft)	(°)	+N/-S (ft)	+E/-W (ft)	(ft)	(ft)	(ft)			
0.0	0.0	0.0	0.0	0.0	0.0	-21.35	259.7	-101.5	278.8					
100.0	100.0	100.0	100.0	0.1	0.1	-21.35	259.7	-101.5	278.8	278.6	0.22	1,240.609	413.536 CC, ES	
200.0	200.0	200.0	200.0	0.3	0.3	-21.35	259.7	-101.5	278.8	278.2	0.67			
300.0	300.0	300.0	300.0	0.5	0.6	-147.24	259.7	-101.5	281.0	279.9	1.15	244.585		
400.0	399.6	399.6	399.6	0.8	0.8	-147.98	259.7	-101.5	287.7	286.0	1.66	173.545		
500.0	498.8	498.8	498.8	1.1	1.0	-149.13	259.7	-101.5	298.8	296.6	2.19	136.212		
600.0	597.1	595.6	595.6	1.4	1.2	-150.13	260.9	-99.4	314.9	312.1	2.75	114.658		
700.0	694.3	691.8	691.5	1.9	1.4	-150.51	264.6	-93.2	336.0	332.6	3.33	100.947		
800.0	790.2	786.9	785.9	2.4	1.7	-150.37	270.7	-83.0	361.9	358.0	3.96	91.376		
838.4	826.5	823.1	821.5	2.7	1.8	-150.19	273.6	-78.0	373.1	368.9	4.22	88.369		
900.0	884.8	880.9	878.3	3.1	2.0	-150.01	279.0	-68.9	391.8	387.2	4.61	85.069		
1,000.0	979.2	974.1	969.3	3.7	2.3	-149.24	289.5	-51.1	422.4	417.1	5.31	79.575		
1,100.0	1,073.7	1,066.4	1,058.2	4.4	2.7	-147.98	302.1	-29.7	453.6	447.5	6.12	74.136		
1,200.0	1,168.2	1,157.3	1,144.4	5.1	3.2	-146.36	316.7	-5.1	485.7	478.6	7.04	68.972		
1,300.0	1,262.6	1,247.7	1,228.8	5.8	3.8	-144.47	333.1	22.7	518.7	510.7	8.07	64.293		
1,400.0	1,357.1	1,340.4	1,315.0	6.5	4.4	-142.64	350.5	52.1	552.5	543.3	9.18	60.165		
1,500.0	1,451.6	1,433.1	1,401.1	7.2	5.1	-141.02	367.9	81.6	586.8	576.4	10.32	56.834		
1,600.0	1,546.0	1,525.7	1,487.3	7.9	5.8	-139.57	385.3	111.0	621.4	609.9	11.49	54.092		
1,700.0	1,640.5	1,618.4	1,573.5	8.6	6.4	-138.28	402.6	140.4	656.3	643.7	12.67	51.820		
1,800.0	1,735.0	1,711.1	1,659.6	9.3	7.1	-137.11	420.0	169.8	691.5	677.7	13.85	49.919		
1,900.0	1,829.4	1,803.8	1,745.8	10.0	7.8	-136.05	437.4	199.2	727.0	711.9	15.05	48.311		
2,000.0	1,923.9	1,896.5	1,832.0	10.6	8.5	-135.10	454.8	228.6	762.6	746.4	16.25	46.938		
2,100.0	2,018.4	1,989.2	1,918.1	11.3	9.2	-134.22	472.2	258.0	798.4	781.0	17.45	45.754 SF		

Company:	Caerus Oil and Gas LLC	Local Co-ordinate Reference:	Well NPR 24A-15 596
Project:	SEC.15-T5S-R96W	TVD Reference:	WELL @ 6453.0ft (Original Well Elev)
Reference Site:	NPR H15 596 North Pad Sec.15-T5S-R96W	MD Reference:	WELL @ 6453.0ft (Original Well Elev)
Site Error:	0.0 ft	North Reference:	True
Reference Well:	NPR 24A-15 596	Survey Calculation Method:	Minimum Curvature
Well Error:	0.0 ft	Output errors are at	2.00 sigma
Reference Wellbore	Wellbore #1	Database:	US_EDM
Reference Design:	Plan #2 (6-14-18)	Offset TVD Reference:	Offset Datum

Offset Design												Offset Site Error:	0.0 ft
Survey Program: 0-MWD												Offset Well Error:	0.0 ft
NPR H15 596 South Pad Sec.15-T5S-R96W - NPR 15B-11 596 - Wellbore #1 - Plan #1 (11-30-17)													
Reference		Offset		Semi Major Axis			Distance						
Measured Depth (ft)	Vertical Depth (ft)	Measured Depth (ft)	Vertical Depth (ft)	Reference (ft)	Offset (ft)	Highside Toolface (°)	Offset Wellbore Centre +N/-S (ft)	+E/-W (ft)	Between Centres (ft)	Between Ellipses (ft)	Minimum Separation (ft)	Separation Factor	Warning
0.0	0.0	0.0	0.0	0.0	0.0	-21.66	307.9	-122.3	331.3				
100.0	100.0	100.0	100.0	0.1	0.1	-21.66	307.9	-122.3	331.3	331.1	0.22	1,473.954	
200.0	200.0	200.0	200.0	0.3	0.3	-21.66	307.9	-122.3	331.3	330.6	0.67	491.318 CC, ES	
300.0	300.0	290.4	290.3	0.5	0.5	-147.17	309.7	-121.2	334.9	333.8	1.14	295.075	
400.0	399.6	380.0	379.7	0.8	0.8	-146.78	315.2	-117.9	345.8	344.2	1.65	209.293	
500.0	498.8	468.3	467.4	1.1	1.0	-146.18	324.0	-112.6	363.9	361.7	2.21	164.368	
600.0	597.1	554.5	552.5	1.4	1.3	-145.40	336.0	-105.4	388.9	386.1	2.82	137.942	
700.0	694.3	638.2	634.4	1.9	1.6	-144.48	350.8	-96.5	420.8	417.3	3.48	121.037	
800.0	790.2	718.8	712.5	2.4	2.0	-143.44	368.0	-86.3	459.1	455.0	4.19	109.610	
838.4	826.5	748.9	741.4	2.7	2.1	-143.01	375.1	-82.0	475.5	471.1	4.48	106.131	
900.0	884.8	800.0	790.2	3.1	2.4	-142.80	388.1	-74.2	503.0	498.1	4.93	102.135	
1,000.0	979.2	871.5	857.8	3.7	2.8	-142.32	408.1	-62.2	549.5	543.8	5.66	96.997	
1,100.0	1,073.7	944.5	925.7	4.4	3.3	-141.66	430.8	-48.6	598.2	591.7	6.46	92.593	
1,200.0	1,168.2	1,015.0	990.5	5.1	3.8	-140.90	454.8	-34.2	649.1	641.8	7.29	89.063	
1,300.0	1,262.6	1,083.0	1,051.9	5.8	4.4	-140.07	479.9	-19.2	702.1	694.0	8.15	86.181	
1,400.0	1,357.1	1,148.6	1,110.1	6.5	4.9	-139.21	505.8	-3.6	757.4	748.3	9.04	83.796 SF	

Company:	Caerus Oil and Gas LLC	Local Co-ordinate Reference:	Well NPR 24A-15 596
Project:	SEC.15-T5S-R96W	TVD Reference:	WELL @ 6453.0ft (Original Well Elev)
Reference Site:	NPR H15 596 North Pad Sec.15-T5S-R96W	MD Reference:	WELL @ 6453.0ft (Original Well Elev)
Site Error:	0.0 ft	North Reference:	True
Reference Well:	NPR 24A-15 596	Survey Calculation Method:	Minimum Curvature
Well Error:	0.0 ft	Output errors are at	2.00 sigma
Reference Wellbore	Wellbore #1	Database:	US_EDM
Reference Design:	Plan #2 (6-14-18)	Offset TVD Reference:	Offset Datum

Offset Design NPR H15 596 South Pad Sec.15-T5S-R96W - NPR 15C-11 596 - Wellbore #1 - Plan #1 (11-30-17)												Offset Site Error:	0.0 ft
Survey Program: 0-MWD												Offset Well Error:	0.0 ft
Reference		Offset		Semi Major Axis			Distance						
Measured Depth (ft)	Vertical Depth (ft)	Measured Depth (ft)	Vertical Depth (ft)	Reference (ft)	Offset (ft)	Highside Toolface (°)	Offset Wellbore Centre +N/-S (ft)	+E/-W (ft)	Between Centres (ft)	Between Ellipses (ft)	Minimum Separation (ft)	Separation Factor	Warning
0.0	0.0	0.0	0.0	0.0	0.0	-21.62	301.0	-119.3	323.8				
100.0	100.0	100.0	100.0	0.1	0.1	-21.62	301.0	-119.3	323.8	323.6	0.22	1,440.584	
200.0	200.0	200.0	200.0	0.3	0.3	-21.62	301.0	-119.3	323.8	323.1	0.67	480.195 CC, ES	
300.0	300.0	300.0	300.0	0.5	0.6	-147.47	301.0	-119.3	326.0	324.8	1.15	283.657	
400.0	399.6	390.7	390.7	0.8	0.8	-147.70	302.8	-118.1	334.0	332.3	1.65	202.967	
500.0	498.8	480.5	480.3	1.1	1.0	-147.62	308.1	-114.6	349.0	346.8	2.19	159.629	
600.0	597.1	568.7	567.9	1.4	1.2	-147.27	316.8	-108.9	370.9	368.2	2.77	134.056	
700.0	694.3	654.8	652.7	1.9	1.5	-146.69	328.5	-101.2	399.6	396.2	3.40	117.693	
800.0	790.2	738.1	734.3	2.4	1.8	-145.90	342.8	-91.8	434.8	430.8	4.08	106.554	
838.4	826.5	769.2	764.5	2.7	1.9	-145.56	348.9	-87.7	450.0	445.7	4.36	103.223	
900.0	884.8	818.5	812.2	3.1	2.1	-145.39	359.4	-80.8	475.5	470.8	4.77	99.679	
1,000.0	979.2	900.0	890.2	3.7	2.5	-144.86	379.1	-67.9	518.7	513.2	5.50	94.362	
1,100.0	1,073.7	973.2	959.4	4.4	3.0	-144.17	399.1	-54.7	564.0	557.8	6.26	90.090	
1,200.0	1,168.2	1,047.2	1,028.3	5.1	3.5	-143.32	421.6	-39.9	611.5	604.4	7.08	86.369	
1,300.0	1,262.6	1,118.9	1,094.0	5.8	4.0	-142.38	445.4	-24.2	661.1	653.2	7.93	83.333	
1,400.0	1,357.1	1,188.1	1,156.4	6.5	4.5	-141.38	470.4	-7.7	712.9	704.1	8.82	80.815	
1,500.0	1,451.6	1,254.7	1,215.5	7.2	5.1	-140.37	496.2	9.3	766.8	757.1	9.75	78.669 SF	

Company:	Caerus Oil and Gas LLC	Local Co-ordinate Reference:	Well NPR 24A-15 596
Project:	SEC.15-T5S-R96W	TVD Reference:	WELL @ 6453.0ft (Original Well Elev)
Reference Site:	NPR H15 596 North Pad Sec.15-T5S-R96W	MD Reference:	WELL @ 6453.0ft (Original Well Elev)
Site Error:	0.0 ft	North Reference:	True
Reference Well:	NPR 24A-15 596	Survey Calculation Method:	Minimum Curvature
Well Error:	0.0 ft	Output errors are at	2.00 sigma
Reference Wellbore	Wellbore #1	Database:	US_EDM
Reference Design:	Plan #2 (6-14-18)	Offset TVD Reference:	Offset Datum

Offset Design													Offset Site Error:	0.0 ft
Survey Program: 0-MWD													Offset Well Error:	0.0 ft
Reference		Offset		Semi Major Axis			Distance							Warning
Measured Depth (ft)	Vertical Depth (ft)	Measured Depth (ft)	Vertical Depth (ft)	Reference (ft)	Offset (ft)	Highside Toolface (°)	Offset Wellbore Centre +N/-S (ft)	+E/-W (ft)	Between Centres (ft)	Between Ellipses (ft)	Minimum Separation (ft)	Separation Factor		
0.0	0.0	0.0	0.0	0.0	0.0	-21.58	294.1	-116.3	316.3					
100.0	100.0	100.0	100.0	0.1	0.1	-21.58	294.1	-116.3	316.3	316.0	0.22	1,407.110		
200.0	200.0	200.0	200.0	0.3	0.3	-21.58	294.1	-116.3	316.3	315.6	0.67	469.037 CC, ES		
300.0	300.0	300.0	300.0	0.5	0.6	-147.44	294.1	-116.3	318.5	317.3	1.15	277.116		
400.0	399.6	399.6	399.6	0.8	0.8	-148.08	294.1	-116.3	325.1	323.5	1.66	196.108		
500.0	498.8	490.7	490.7	1.1	1.0	-148.65	295.8	-115.1	337.5	335.3	2.18	154.611		
600.0	597.1	580.6	580.3	1.4	1.2	-148.85	301.0	-111.3	356.6	353.9	2.74	129.925		
700.0	694.3	668.7	667.8	1.9	1.4	-148.70	309.3	-105.2	382.5	379.1	3.35	114.266		
800.0	790.2	754.5	752.5	2.4	1.7	-148.26	320.6	-97.0	414.7	410.7	4.00	103.689		
838.4	826.5	786.7	784.1	2.7	1.8	-148.02	325.6	-93.3	428.7	424.5	4.26	100.563		
900.0	884.8	837.8	834.0	3.1	2.0	-147.93	334.4	-86.8	452.4	447.7	4.65	97.275		
1,000.0	979.2	919.4	913.0	3.7	2.3	-147.49	350.8	-74.9	492.4	487.0	5.33	92.458		
1,100.0	1,073.7	1,000.0	990.2	4.4	2.7	-146.76	369.6	-61.1	534.3	528.2	6.06	88.130		
1,200.0	1,168.2	1,076.7	1,062.6	5.1	3.2	-145.86	389.9	-46.3	578.3	571.4	6.86	84.318		
1,300.0	1,262.6	1,152.1	1,132.8	5.8	3.7	-144.82	412.1	-30.0	624.3	616.6	7.71	81.017		
1,400.0	1,357.1	1,225.1	1,199.7	6.5	4.2	-143.70	435.7	-12.8	672.4	663.8	8.59	78.297		
1,500.0	1,451.6	1,300.0	1,267.1	7.2	4.8	-142.46	462.1	6.5	722.6	713.1	9.54	75.737		
1,600.0	1,546.0	1,363.6	1,323.3	7.9	5.3	-141.36	486.2	24.2	774.9	764.5	10.47	73.994 SF		

Company:	Caerus Oil and Gas LLC	Local Co-ordinate Reference:	Well NPR 24A-15 596
Project:	SEC.15-T5S-R96W	TVD Reference:	WELL @ 6453.0ft (Original Well Elev)
Reference Site:	NPR H15 596 North Pad Sec.15-T5S-R96W	MD Reference:	WELL @ 6453.0ft (Original Well Elev)
Site Error:	0.0 ft	North Reference:	True
Reference Well:	NPR 24A-15 596	Survey Calculation Method:	Minimum Curvature
Well Error:	0.0 ft	Output errors are at	2.00 sigma
Reference Wellbore	Wellbore #1	Database:	US_EDM
Reference Design:	Plan #2 (6-14-18)	Offset TVD Reference:	Offset Datum

Offset Design												Offset Site Error:	0.0 ft
Survey Program: 0-MWD												Offset Well Error:	0.0 ft
NPR H15 596 South Pad Sec.15-T5S-R96W - NPR 21A-15 596 - Wellbore #1 - Plan #1 (11-30-17)													
Reference		Offset		Semi Major Axis			Distance						
Measured Depth (ft)	Vertical Depth (ft)	Measured Depth (ft)	Vertical Depth (ft)	Reference (ft)	Offset (ft)	Highside Toolface (°)	Offset Wellbore Centre +N/-S (ft)	+E/-W (ft)	Between Centres (ft)	Between Ellipses (ft)	Minimum Separation (ft)	Separation Factor	Warning
0.0	0.0	0.0	0.0	0.0	0.0	-23.40	290.1	-125.6	316.1				
100.0	100.0	100.0	100.0	0.1	0.1	-23.40	290.1	-125.6	316.1	315.9	0.22	1,406.517	
200.0	200.0	200.0	200.0	0.3	0.3	-23.40	290.1	-125.6	316.1	315.5	0.67	468.839 CC, ES	
300.0	300.0	300.0	300.0	0.5	0.6	-149.25	290.1	-125.6	318.4	317.2	1.15	276.654	
400.0	399.6	399.6	399.6	0.8	0.8	-149.85	290.1	-125.6	325.2	323.5	1.66	195.707	
500.0	498.8	483.9	483.9	1.1	1.0	-150.61	291.8	-126.4	338.7	336.5	2.18	155.285	
600.0	597.1	566.0	565.7	1.4	1.2	-151.49	296.6	-128.7	361.1	358.4	2.74	131.705	
700.0	694.3	644.9	644.2	1.9	1.4	-152.39	304.2	-132.5	392.3	389.0	3.33	117.903	
800.0	790.2	719.9	718.4	2.4	1.6	-153.20	314.1	-137.3	431.9	427.9	3.93	109.987	
838.4	826.5	747.4	745.5	2.7	1.7	-153.47	318.4	-139.4	449.2	445.0	4.16	107.975	
900.0	884.8	800.0	797.1	3.1	1.8	-154.42	327.6	-143.9	478.7	474.2	4.48	106.842	
1,000.0	979.2	858.6	854.3	3.7	2.1	-155.33	339.4	-149.7	528.9	524.0	4.96	106.717 SF	
1,100.0	1,073.7	923.8	917.3	4.4	2.4	-156.19	354.2	-157.0	582.4	577.0	5.45	106.859	
1,200.0	1,168.2	986.3	977.1	5.1	2.7	-156.87	370.3	-164.8	638.8	632.8	5.94	107.471	
1,300.0	1,262.6	1,046.0	1,033.8	5.8	3.0	-157.41	387.3	-173.2	697.8	691.4	6.44	108.398	
1,400.0	1,357.1	1,100.0	1,084.4	6.5	3.3	-157.81	404.1	-181.4	759.3	752.4	6.92	109.703	

Company:	Caerus Oil and Gas LLC	Local Co-ordinate Reference:	Well NPR 24A-15 596
Project:	SEC.15-T5S-R96W	TVD Reference:	WELL @ 6453.0ft (Original Well Elev)
Reference Site:	NPR H15 596 North Pad Sec.15-T5S-R96W	MD Reference:	WELL @ 6453.0ft (Original Well Elev)
Site Error:	0.0 ft	North Reference:	True
Reference Well:	NPR 24A-15 596	Survey Calculation Method:	Minimum Curvature
Well Error:	0.0 ft	Output errors are at	2.00 sigma
Reference Wellbore	Wellbore #1	Database:	US_EDM
Reference Design:	Plan #2 (6-14-18)	Offset TVD Reference:	Offset Datum

Offset Design													Offset Site Error:	0.0 ft
Survey Program: 0-MWD													Offset Well Error:	0.0 ft
Reference		Offset		Semi Major Axis			Distance							Warning
Measured Depth (ft)	Vertical Depth (ft)	Measured Depth (ft)	Vertical Depth (ft)	Reference (ft)	Offset (ft)	Highside Toolface (°)	Offset Wellbore Centre +N/-S (ft)	+E/-W (ft)	Between Centres (ft)	Between Ellipses (ft)	Minimum Separation (ft)	Separation Factor		
0.0	0.0	0.0	0.0	0.0	0.0	-23.39	283.3	-122.6	308.7					
100.0	100.0	100.0	100.0	0.1	0.1	-23.39	283.3	-122.6	308.7	308.4	0.22	1,373.229		
200.0	200.0	200.0	200.0	0.3	0.3	-23.39	283.3	-122.6	308.7	308.0	0.67	457.743 CC, ES		
300.0	300.0	300.0	300.0	0.5	0.6	-149.25	283.3	-122.6	310.9	309.8	1.15	270.153		
400.0	399.6	399.6	399.6	0.8	0.8	-149.87	283.3	-122.6	317.7	316.0	1.66	191.200		
500.0	498.8	498.8	498.8	1.1	1.0	-150.84	283.3	-122.6	329.0	326.8	2.20	149.692		
600.0	597.1	582.2	582.2	1.4	1.2	-151.85	284.8	-123.4	347.2	344.5	2.74	126.773		
700.0	694.3	662.7	662.5	1.9	1.4	-152.92	289.3	-125.9	374.3	371.0	3.32	112.864		
800.0	790.2	739.5	738.9	2.4	1.6	-153.94	296.4	-129.9	410.0	406.1	3.91	104.729		
838.4	826.5	767.9	767.0	2.7	1.6	-154.30	299.6	-131.8	425.9	421.8	4.15	102.696		
900.0	884.8	812.4	811.0	3.1	1.8	-155.18	305.5	-135.1	453.1	448.7	4.45	101.865		
1,000.0	979.2	882.5	880.0	3.7	2.0	-156.38	316.6	-141.3	500.2	495.3	4.94	101.298 SF		
1,100.0	1,073.7	949.9	945.7	4.4	2.2	-157.36	329.2	-148.4	550.6	545.2	5.43	101.455		
1,200.0	1,168.2	1,014.5	1,008.3	5.1	2.5	-158.14	343.3	-156.3	604.1	598.2	5.91	102.167		
1,300.0	1,262.6	1,076.4	1,067.7	5.8	2.8	-158.78	358.5	-164.9	660.4	654.0	6.40	103.233		
1,400.0	1,357.1	1,135.6	1,123.9	6.5	3.1	-159.29	374.6	-173.9	719.4	712.5	6.88	104.566		
1,500.0	1,451.6	1,200.0	1,184.4	7.2	3.5	-159.75	393.8	-184.8	780.9	773.5	7.37	105.897		

NPR H15 596 South Pad Sec.15-T5S-R96W - NPR 21C-15 596 - Wellbore #1 - Plan #1 (11-30-17)														Offset Site Error:	0.0 ft
Survey Program: 0-MWDD														Offset Well Error:	0.0 ft
Reference		Offset		Semi Major Axis			Distance							Warning	
Measured Depth	Vertical Depth	Measured Depth	Vertical Depth	Reference	Offset	Highside Toolface	Offset Wellbore Centre		Between Centres	Between Ellipses	Minimum Separation	Separation Factor			
(ft)	(ft)	(ft)	(ft)	(ft)	(ft)	(°)	+N/-S (ft)	+E/-W (ft)	(ft)	(ft)	(ft)				
0.0	0.0	0.0	0.0	0.0	0.0	-23.39	276.4	-119.5	301.1						
100.0	100.0	100.0	100.0	0.1	0.1	-23.39	276.4	-119.5	301.1	300.9	0.22	1,339.792			
200.0	200.0	200.0	200.0	0.3	0.3	-23.39	276.4	-119.5	301.1	300.5	0.67	446.597	CC, ES		
300.0	300.0	295.8	295.8	0.5	0.5	-149.50	276.4	-121.1	304.1	302.9	1.14	267.715			
400.0	399.6	386.7	386.6	0.8	0.8	-150.74	276.7	-125.5	313.2	311.6	1.64	190.514			
500.0	498.8	470.4	470.0	1.1	1.0	-152.13	279.8	-131.4	331.1	328.9	2.19	150.999			
600.0	597.1	551.4	550.4	1.4	1.2	-153.50	286.0	-138.5	358.0	355.3	2.77	129.224			
700.0	694.3	628.7	626.8	1.9	1.4	-154.74	294.7	-146.7	393.8	390.4	3.36	117.237			
800.0	790.2	700.0	696.8	2.4	1.7	-155.72	305.3	-155.4	437.8	433.9	3.95	110.869			
838.4	826.5	728.5	724.6	2.7	1.8	-156.09	310.2	-159.2	456.8	452.6	4.18	109.204	SF		
900.0	884.8	770.3	765.3	3.1	2.0	-156.96	318.0	-165.0	488.8	484.3	4.47	109.262			
1,000.0	979.2	836.0	828.6	3.7	2.3	-158.11	331.9	-175.0	543.3	538.4	4.95	109.840			
1,100.0	1,073.7	900.0	889.8	4.4	2.6	-159.02	347.4	-185.6	600.8	595.4	5.42	110.848			
1,200.0	1,168.2	958.9	945.6	5.1	3.0	-159.70	363.3	-196.1	660.9	655.0	5.90	112.101			
1,300.0	1,262.6	1,033.4	1,015.5	5.8	3.4	-160.41	384.7	-209.9	722.7	716.3	6.39	113.186			
1,400.0	1,357.1	1,111.6	1,089.0	6.5	3.9	-161.04	407.3	-224.5	784.6	777.8	6.86	114.410			

Company:	Caerus Oil and Gas LLC	Local Co-ordinate Reference:	Well NPR 24A-15 596
Project:	SEC.15-T5S-R96W	TVD Reference:	WELL @ 6453.0ft (Original Well Elev)
Reference Site:	NPR H15 596 North Pad Sec.15-T5S-R96W	MD Reference:	WELL @ 6453.0ft (Original Well Elev)
Site Error:	0.0 ft	North Reference:	True
Reference Well:	NPR 24A-15 596	Survey Calculation Method:	Minimum Curvature
Well Error:	0.0 ft	Output errors are at	2.00 sigma
Reference Wellbore	Wellbore #1	Database:	US_EDM
Reference Design:	Plan #2 (6-14-18)	Offset TVD Reference:	Offset Datum

Offset Design													Offset Site Error:	0.0 ft
Survey Program: 0-MWD													Offset Well Error:	0.0 ft
Reference		Offset		Semi Major Axis			Distance							Warning
Measured Depth (ft)	Vertical Depth (ft)	Measured Depth (ft)	Vertical Depth (ft)	Reference (ft)	Offset (ft)	Highside Toolface (°)	Offset Wellbore Centre +N/-S (ft)	+E/-W (ft)	Between Centres (ft)	Between Ellipses (ft)	Minimum Separation (ft)	Separation Factor		
0.0	0.0	0.0	0.0	0.0	0.0	-23.39	269.5	-116.6	293.6					
100.0	100.0	100.0	100.0	0.1	0.1	-23.39	269.5	-116.6	293.6	293.4	0.22	1,306.306		
200.0	200.0	200.0	200.0	0.3	0.3	-23.39	269.5	-116.6	293.6	292.9	0.67	435.435 CC, ES		
300.0	300.0	300.0	300.0	0.5	0.6	-149.26	269.5	-116.6	295.9	294.7	1.15	257.081		
400.0	399.6	395.4	395.4	0.8	0.8	-150.15	269.5	-118.2	303.3	301.7	1.65	184.134		
500.0	498.8	485.6	485.4	1.1	1.0	-151.72	269.8	-122.5	317.2	315.0	2.18	145.550		
600.0	597.1	568.0	567.6	1.4	1.2	-153.34	272.6	-128.5	339.7	337.0	2.74	123.811		
700.0	694.3	647.1	646.1	1.9	1.4	-154.89	278.3	-135.9	371.4	368.1	3.33	111.423		
800.0	790.2	722.1	720.2	2.4	1.6	-156.25	286.2	-144.4	411.7	407.8	3.93	104.749		
838.4	826.5	749.6	747.3	2.7	1.7	-156.70	289.8	-147.9	429.4	425.2	4.16	103.195		
900.0	884.8	800.0	796.7	3.1	1.9	-157.88	297.2	-154.7	459.5	455.0	4.47	102.871 SF		
1,000.0	979.2	860.4	855.5	3.7	2.1	-159.09	307.5	-163.8	510.9	506.0	4.93	103.708		
1,100.0	1,073.7	925.3	918.2	4.4	2.4	-160.18	320.4	-174.6	565.6	560.2	5.40	104.807		
1,200.0	1,168.2	991.9	981.9	5.1	2.8	-161.10	335.6	-186.7	623.1	617.3	5.87	106.127		
1,300.0	1,262.6	1,066.1	1,052.5	5.8	3.2	-161.95	353.6	-200.8	682.3	675.9	6.35	107.428		
1,400.0	1,357.1	1,146.3	1,128.7	6.5	3.6	-162.73	373.0	-216.1	741.5	734.7	6.82	108.773		

Company:	Caerus Oil and Gas LLC	Local Co-ordinate Reference:	Well NPR 24A-15 596
Project:	SEC.15-T5S-R96W	TVD Reference:	WELL @ 6453.0ft (Original Well Elev)
Reference Site:	NPR H15 596 North Pad Sec.15-T5S-R96W	MD Reference:	WELL @ 6453.0ft (Original Well Elev)
Site Error:	0.0 ft	North Reference:	True
Reference Well:	NPR 24A-15 596	Survey Calculation Method:	Minimum Curvature
Well Error:	0.0 ft	Output errors are at	2.00 sigma
Reference Wellbore	Wellbore #1	Database:	US_EDM
Reference Design:	Plan #2 (6-14-18)	Offset TVD Reference:	Offset Datum

Offset Design													NPR H15 596 South Pad Sec.15-T5S-R96W - NPR 22A-15 596 - Wellbore #1 - Plan #1 (11-30-17)		Offset Site Error:		0.0 ft
Survey Program:		0-MWD											Offset Well Error:		0.0 ft		
Reference		Offset		Semi Major Axis		Highside Toolface (°)	Offset Wellbore Centre		Distance		Minimum Separation (ft)	Separation Factor	Warning				
Measured Depth (ft)	Vertical Depth (ft)	Measured Depth (ft)	Vertical Depth (ft)	Reference (ft)	Offset (ft)		+N/-S (ft)	+E/-W (ft)	Between Centres (ft)	Between Ellipses (ft)							
0.0	0.0	0.0	0.0	0.0	0.0	-23.39	262.7	-113.6	286.2								
100.0	100.0	100.0	100.0	0.1	0.1	-23.39	262.7	-113.6	286.2	286.0	0.22	1,273.267					
200.0	200.0	200.0	200.0	0.3	0.3	-23.39	262.7	-113.6	286.2	285.5	0.67	424.422	CC, ES				
300.0	300.0	300.0	300.0	0.5	0.6	-149.26	262.7	-113.6	288.4	287.3	1.15	250.627					
400.0	399.6	399.6	399.6	0.8	0.8	-149.94	262.7	-113.6	295.2	293.5	1.66	177.664					
500.0	498.8	494.4	494.3	1.1	1.0	-151.19	262.7	-115.2	307.3	305.1	2.18	140.669					
600.0	597.1	583.7	583.6	1.4	1.2	-153.02	262.9	-119.5	325.9	323.2	2.73	119.170					
700.0	694.3	665.0	664.6	1.9	1.4	-154.93	265.0	-126.1	353.1	349.8	3.31	106.576					
800.0	790.2	742.2	741.2	2.4	1.6	-156.79	269.2	-134.7	389.3	385.4	3.91	99.551					
838.4	826.5	770.6	769.2	2.7	1.7	-157.45	271.3	-138.4	405.5	401.3	4.14	97.894					
900.0	884.8	815.0	813.1	3.1	1.8	-158.77	275.1	-144.9	433.2	428.8	4.44	97.636	SF				
1,000.0	979.2	884.8	881.4	3.7	2.1	-160.63	282.4	-156.5	481.3	476.4	4.91	97.973					
1,100.0	1,073.7	951.5	946.4	4.4	2.3	-162.21	291.0	-169.4	532.9	527.5	5.38	98.981					
1,200.0	1,168.2	1,015.4	1,007.9	5.1	2.6	-163.53	300.7	-183.2	587.8	581.9	5.85	100.531					
1,300.0	1,262.6	1,076.3	1,066.1	5.8	2.9	-164.65	311.3	-197.9	645.6	639.3	6.31	102.390					
1,400.0	1,357.1	1,140.9	1,127.2	6.5	3.3	-165.70	323.8	-214.7	706.0	699.2	6.78	104.146					
1,500.0	1,451.6	1,219.2	1,201.1	7.2	3.8	-166.80	339.2	-235.5	767.2	760.0	7.24	105.997					

Company:	Caerus Oil and Gas LLC	Local Co-ordinate Reference:	Well NPR 24A-15 596
Project:	SEC.15-T5S-R96W	TVD Reference:	WELL @ 6453.0ft (Original Well Elev)
Reference Site:	NPR H15 596 North Pad Sec.15-T5S-R96W	MD Reference:	WELL @ 6453.0ft (Original Well Elev)
Site Error:	0.0 ft	North Reference:	True
Reference Well:	NPR 24A-15 596	Survey Calculation Method:	Minimum Curvature
Well Error:	0.0 ft	Output errors are at	2.00 sigma
Reference Wellbore	Wellbore #1	Database:	US_EDM
Reference Design:	Plan #2 (6-14-18)	Offset TVD Reference:	Offset Datum

NPR H15 596 South Pad Sec.15-T5S-R96W - NPR 22B-10 596 - Wellbore #1 - Plan #1 (11-30-17)													Offset Site Error:	0.0 ft
Survey Program: 0-MWD													Offset Well Error:	0.0 ft
Reference		Offset		Semi Major Axis			Distance						Warning	
Measured Depth	Vertical Depth	Measured Depth	Vertical Depth	Reference	Offset	Highside Toolface	Offset Wellbore Centre		Between Centres	Between Ellipses	Minimum Separation	Separation Factor		
(ft)	(ft)	(ft)	(ft)	(ft)	(ft)	(°)	+N/-S (ft)	+E/-W (ft)	(ft)	(ft)	(ft)			
0.0	0.0	0.0	0.0	0.0	0.0	-23.36	255.5	-110.4	278.3					
100.0	100.0	100.0	100.0	0.1	0.1	-23.36	255.5	-110.4	278.3	278.0	0.22	1,238.043		
200.0	200.0	200.0	200.0	0.3	0.3	-23.36	255.5	-110.4	278.3	277.6	0.67	412.681	CC, ES	
300.0	300.0	300.0	300.0	0.5	0.6	-149.24	255.5	-110.4	280.5	279.4	1.15	243.751		
400.0	399.6	399.6	399.6	0.8	0.8	-149.94	255.5	-110.4	287.3	285.6	1.66	172.898		
500.0	498.8	498.8	498.8	1.1	1.0	-151.03	255.5	-110.4	298.7	296.5	2.20	135.848		
600.0	597.1	592.4	592.4	1.4	1.2	-152.56	255.5	-111.8	315.5	312.8	2.74	115.066		
700.0	694.3	680.7	680.6	1.9	1.4	-154.55	255.6	-116.1	339.0	335.6	3.31	102.496		
800.0	790.2	760.5	760.1	2.4	1.6	-156.55	255.2	-122.7	370.8	367.0	3.89	95.265		
838.4	826.5	790.0	789.4	2.7	1.7	-157.30	258.3	-125.9	385.4	381.3	4.12	93.559		
900.0	884.8	836.2	835.2	3.1	1.8	-158.74	260.5	-131.6	410.6	406.2	4.42	92.999	SF	
1,000.0	979.2	900.0	898.2	3.7	2.0	-160.60	264.5	-140.9	454.8	449.9	4.87	93.306		
1,100.0	1,073.7	978.4	975.0	4.4	2.2	-162.67	271.0	-154.8	502.5	497.1	5.37	93.647		
1,200.0	1,168.2	1,045.0	1,039.8	5.1	2.5	-164.25	277.9	-168.7	553.8	547.9	5.83	94.920		
1,300.0	1,262.6	1,108.7	1,101.2	5.8	2.8	-165.63	285.7	-183.7	608.2	601.9	6.29	96.641		
1,400.0	1,357.1	1,169.7	1,159.5	6.5	3.1	-166.82	294.2	-199.7	665.6	658.9	6.76	98.531		
1,500.0	1,451.6	1,249.0	1,234.8	7.2	3.5	-168.19	306.0	-221.4	724.6	717.4	7.23	100.154		
1,600.0	1,546.0	1,328.6	1,310.5	7.9	4.0	-169.36	317.8	-243.3	783.8	776.1	7.70	101.853		

Company:	Caerus Oil and Gas LLC	Local Co-ordinate Reference:	Well NPR 24A-15 596
Project:	SEC.15-T5S-R96W	TVD Reference:	WELL @ 6453.0ft (Original Well Elev)
Reference Site:	NPR H15 596 North Pad Sec.15-T5S-R96W	MD Reference:	WELL @ 6453.0ft (Original Well Elev)
Site Error:	0.0 ft	North Reference:	True
Reference Well:	NPR 24A-15 596	Survey Calculation Method:	Minimum Curvature
Well Error:	0.0 ft	Output errors are at	2.00 sigma
Reference Wellbore	Wellbore #1	Database:	US_EDM
Reference Design:	Plan #2 (6-14-18)	Offset TVD Reference:	Offset Datum

Offset Design												Offset Site Error:	0.0 ft
Survey Program: 0-MWD												Offset Well Error:	0.0 ft
NPR H15 596 South Pad Sec.15-T5S-R96W - NPR 25C-10 596 - Wellbore #1 - Plan #1 (11-30-17)													
Reference		Offset		Semi Major Axis			Distance						
Measured Depth (ft)	Vertical Depth (ft)	Measured Depth (ft)	Vertical Depth (ft)	Reference (ft)	Offset (ft)	Highside Toolface (°)	Offset Wellbore Centre +N/-S (ft)	+E/-W (ft)	Between Centres (ft)	Between Ellipses (ft)	Minimum Separation (ft)	Separation Factor	Warning
0.0	0.0	0.0	0.0	0.0	0.0	-23.39	304.0	-131.5	331.2				
100.0	100.0	100.0	100.0	0.1	0.1	-23.39	304.0	-131.5	331.2	331.0	0.22	1,473.439	
200.0	200.0	200.0	200.0	0.3	0.3	-23.39	304.0	-131.5	331.2	330.5	0.67	491.146 CC, ES	
300.0	300.0	285.2	285.1	0.5	0.5	-149.11	305.8	-132.0	335.6	334.5	1.13	296.709	
400.0	399.6	369.3	369.1	0.8	0.7	-149.34	311.2	-133.5	348.9	347.3	1.65	211.317	
500.0	498.8	451.4	450.7	1.1	1.0	-149.66	319.9	-135.9	371.0	368.8	2.20	168.248	
600.0	597.1	530.7	529.0	1.4	1.2	-150.00	331.5	-139.1	401.5	398.7	2.78	144.607	
700.0	694.3	600.0	597.1	1.9	1.4	-150.21	344.2	-142.6	440.1	436.7	3.35	131.370	
800.0	790.2	677.6	672.6	2.4	1.8	-150.47	361.2	-147.4	486.3	482.3	3.97	122.410	
838.4	826.5	700.0	694.3	2.7	1.9	-150.45	366.7	-148.9	506.0	501.8	4.20	120.391	
900.0	884.8	744.6	737.2	3.1	2.1	-151.05	378.3	-152.1	539.0	534.4	4.53	119.048	
1,000.0	979.2	800.0	790.2	3.7	2.4	-151.68	394.0	-156.5	594.9	589.9	5.03	118.307	
1,100.0	1,073.7	870.1	856.4	4.4	2.8	-152.30	416.1	-162.6	653.4	647.8	5.58	117.184	
1,200.0	1,168.2	928.8	911.3	5.1	3.2	-152.69	436.3	-168.3	714.5	708.3	6.11	116.980 SF	
1,300.0	1,262.6	984.9	963.0	5.8	3.6	-152.99	457.2	-174.1	777.8	771.2	6.64	117.096	

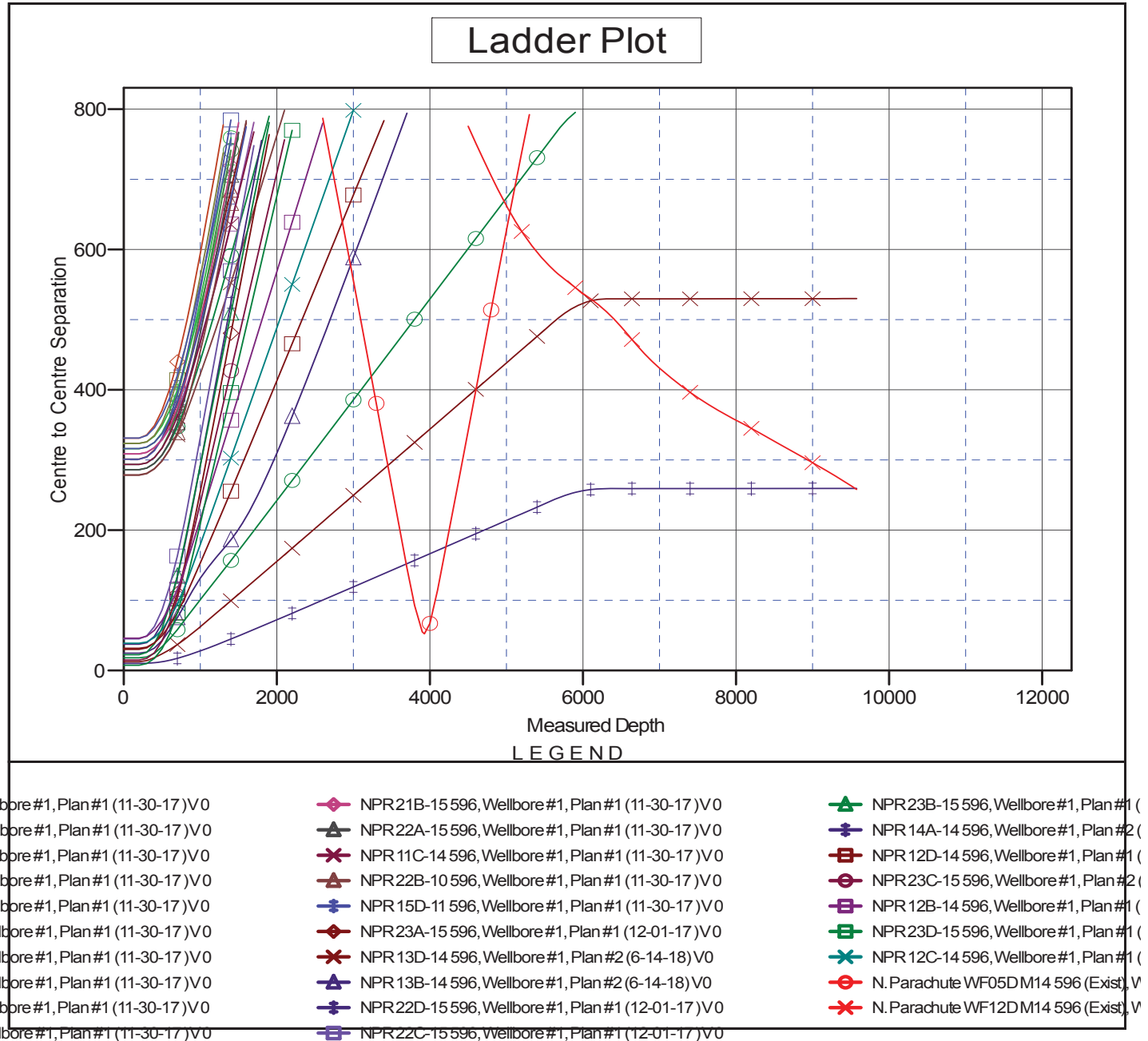
Company:	Caerus Oil and Gas LLC	Local Co-ordinate Reference:	Well NPR 24A-15 596
Project:	SEC.15-T5S-R96W	TVD Reference:	WELL @ 6453.0ft (Original Well Elev)
Reference Site:	NPR H15 596 North Pad Sec.15-T5S-R96W	MD Reference:	WELL @ 6453.0ft (Original Well Elev)
Site Error:	0.0 ft	North Reference:	True
Reference Well:	NPR 24A-15 596	Survey Calculation Method:	Minimum Curvature
Well Error:	0.0 ft	Output errors are at	2.00 sigma
Reference Wellbore	Wellbore #1	Database:	US_EDM
Reference Design:	Plan #2 (6-14-18)	Offset TVD Reference:	Offset Datum

NPR H15 596 South Pad Sec.15-T5S-R96W - NPR 25D-10 596 - Wellbore #1 - Plan #1 (11-30-17)													Offset Site Error:	0.0 ft
Survey Program:		0-MWVD											Offset Well Error:	0.0 ft
Reference		Offset		Semi Major Axis			Distance						Warning	
Measured Depth	Vertical Depth	Measured Depth	Vertical Depth	Reference	Offset	Highside Toolface	Offset Wellbore Centre		Between Centres	Between Ellipses	Minimum Separation	Separation Factor		
(ft)	(ft)	(ft)	(ft)	(ft)	(ft)	(°)	+N/-S (ft)	+E/-W (ft)	(ft)	(ft)	(ft)			
0.0	0.0	0.0	0.0	0.0	0.0	-23.39	297.1	-128.5	323.6					
100.0	100.0	100.0	100.0	0.1	0.1	-23.39	297.1	-128.5	323.6	323.4	0.22	1,439.903		
200.0	200.0	200.0	200.0	0.3	0.3	-23.39	297.1	-128.5	323.6	323.0	0.67	479.968	CC, ES	
300.0	300.0	300.0	300.0	0.5	0.6	-149.23	297.1	-128.5	325.9	324.7	1.15	283.179		
400.0	399.6	384.8	384.8	0.8	0.8	-149.68	298.8	-129.2	334.9	333.2	1.64	203.743		
500.0	498.8	468.0	467.8	1.1	1.0	-150.30	303.8	-131.4	352.8	350.6	2.19	161.350		
600.0	597.1	548.6	547.9	1.4	1.2	-151.00	311.9	-134.8	379.4	376.6	2.76	137.650		
700.0	694.3	625.8	624.2	1.9	1.4	-151.68	322.5	-139.4	414.5	411.2	3.34	124.032		
800.0	790.2	700.0	697.1	2.4	1.6	-152.28	335.4	-144.9	457.7	453.7	3.94	116.020		
838.4	826.5	725.5	722.0	2.7	1.7	-152.44	340.4	-147.1	476.3	472.1	4.18	114.011		
900.0	884.8	767.5	762.8	3.1	1.9	-153.15	349.4	-150.9	507.7	503.2	4.48	113.240		
1,000.0	979.2	833.2	826.3	3.7	2.2	-154.10	365.0	-157.6	561.1	556.1	4.98	112.605		
1,100.0	1,073.7	900.0	890.2	4.4	2.6	-154.89	382.9	-165.3	617.5	612.0	5.49	112.431	SF	
1,200.0	1,168.2	956.5	943.6	5.1	2.9	-155.44	399.7	-172.5	676.5	670.5	5.99	112.965		
1,300.0	1,262.6	1,014.1	997.5	5.8	3.3	-155.90	418.3	-180.5	738.1	731.6	6.49	113.694		

Company:	Caerus Oil and Gas LLC	Local Co-ordinate Reference:	Well NPR 24A-15 596
Project:	SEC.15-T5S-R96W	TVD Reference:	WELL @ 6453.0ft (Original Well Elev)
Reference Site:	NPR H15 596 North Pad Sec.15-T5S-R96W	MD Reference:	WELL @ 6453.0ft (Original Well Elev)
Site Error:	0.0 ft	North Reference:	True
Reference Well:	NPR 24A-15 596	Survey Calculation Method:	Minimum Curvature
Well Error:	0.0 ft	Output errors are at	2.00 sigma
Reference Wellbore	Wellbore #1	Database:	US_EDM
Reference Design:	Plan #2 (6-14-18)	Offset TVD Reference:	Offset Datum

Reference Depths are relative to WELL @ 6453.0ft (Original Well Elev)
Offset Depths are relative to Offset Datum
Central Meridian is -111.000000

Coordinates are relative to: NPR 24A-15 596
Coordinate System is Universal Transverse Mercator (US Survey Feet), Zone 12N
Grid Convergence at Surface is: 1.82°



CC - Min centre to center distance or convergent point, SF - min separation factor, ES - min ellipse separation

Company:	Caerus Oil and Gas LLC	Local Co-ordinate Reference:	Well NPR 24A-15 596
Project:	SEC.15-T5S-R96W	TVD Reference:	WELL @ 6453.0ft (Original Well Elev)
Reference Site:	NPR H15 596 North Pad Sec.15-T5S-R96W	MD Reference:	WELL @ 6453.0ft (Original Well Elev)
Site Error:	0.0 ft	North Reference:	True
Reference Well:	NPR 24A-15 596	Survey Calculation Method:	Minimum Curvature
Well Error:	0.0 ft	Output errors are at	2.00 sigma
Reference Wellbore	Wellbore #1	Database:	US_EDM
Reference Design:	Plan #2 (6-14-18)	Offset TVD Reference:	Offset Datum

Reference Depths are relative to WELL @ 6453.0ft (Original Well Elev)
 Offset Depths are relative to Offset Datum
 Central Meridian is -111.000000

Coordinates are relative to: NPR 24A-15 596
 Coordinate System is Universal Transverse Mercator (US Survey Feet), Zone 12N
 Grid Convergence at Surface is: 1.82°

