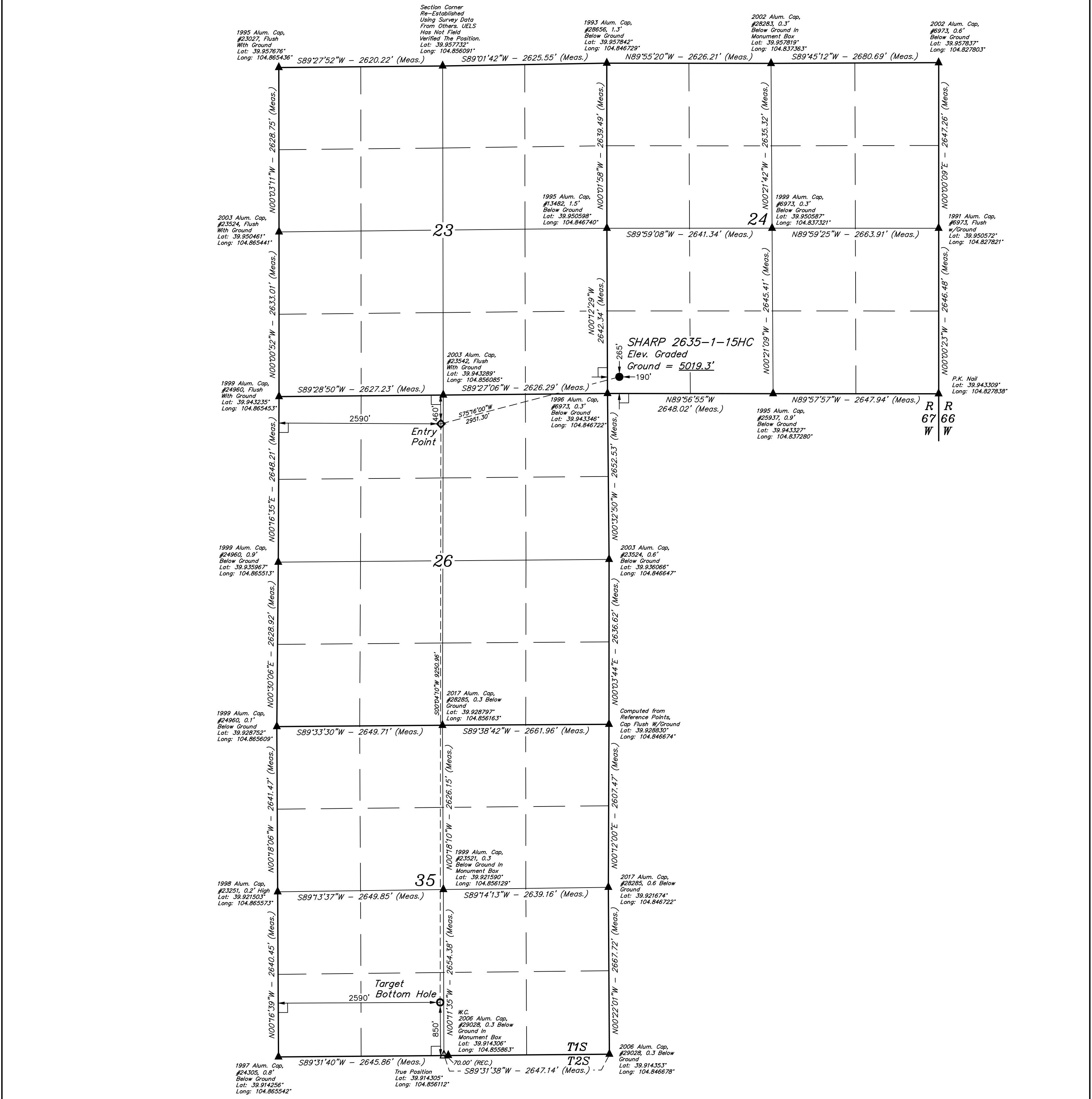


LEGEND:

- ◻ = 90° SYMBOL
- = PROPOSED WELLHEAD
- ◆ = ENTRY POINT
- = TARGET BOTTOM HOLE
- ▲ = SECTION CORNERS LOCATED (NAD 83)
- △ = SECTION CORNERS RE-ESTABLISHED (Not Set on Ground.) (NAD 83)

T1S, R67W, 6th P.M.



PDOP = 1.5

| NAD 83 (SURFACE LOCATION) | NAD 83 (ENTRY POINT) | NAD 83 (TARGET BOTTOM HOLE) |
|-----------------------------------------|-----------------------------------------|-----------------------------------------|
| LATITUDE = 39°56'38.66" (39.944073°) | LATITUDE = 39°56'31.29" (39.942026°) | LATITUDE = 39°54'59.89" (39.916637°) |
| LONGITUDE = 104°50'45.77" (104.846046°) | LONGITUDE = 104°51'22.42" (104.856228°) | LONGITUDE = 104°51'22.76" (104.856321°) |
| NAD 27 (SURFACE LOCATION) | NAD 27 (ENTRY POINT) | NAD 27 (TARGET BOTTOM HOLE) |
| LATITUDE = 39°56'38.72" (39.944088°) | LATITUDE = 39°56'31.35" (39.942041°) | LATITUDE = 39°54'59.95" (39.916652°) |
| LONGITUDE = 104°50'43.86" (104.845517°) | LONGITUDE = 104°51'20.51" (104.855698°) | LONGITUDE = 104°51'20.85" (104.857919°) |

BASIS OF BEARINGS
 TRANSVERSE MERCATOR PROJECTION WITH A CENTRAL MERIDIAN OF W105°00'00".

BASIS OF ELEVATION
 OPUS SOLUTION GENERATED NAVD 88

UELS, LLC
 Corporate Office * 85 South 200 East
 Vernal, UT 84078 * (435) 789-1017

CERTIFICATE OF REGISTRATION
 THIS IS TO CERTIFY THAT THE ABOVE NAMED SURVEYOR HAS BEEN REGISTERED UNDER MY SUPERVISION AND THAT THE SAME ARE TRUE AND CORRECT TO THE BEST OF MY KNOWLEDGE AND BELIEF.

[Signature]
 REGISTERED LAND SURVEYOR
 REGISTRATION NO. 28285
 STATE OF COLORADO
 JUNE 18, 2018

GREAT WESTERN OPERATING COMPANY

SHARP 2635-1-15HC
 SW 1/4 SW 1/4, SECTION 24, T1S, R67W, 6th P.M.
 ADAMS COUNTY, COLORADO

| | | | |
|-------------|-------------------|----------|------------|
| SURVEYED BY | JARED CHRISTOPHER | 06-13-18 | SCALE |
| DRAWN BY | K.B. | 06-14-18 | 1" = 1000' |

WELL LOCATION PLAT