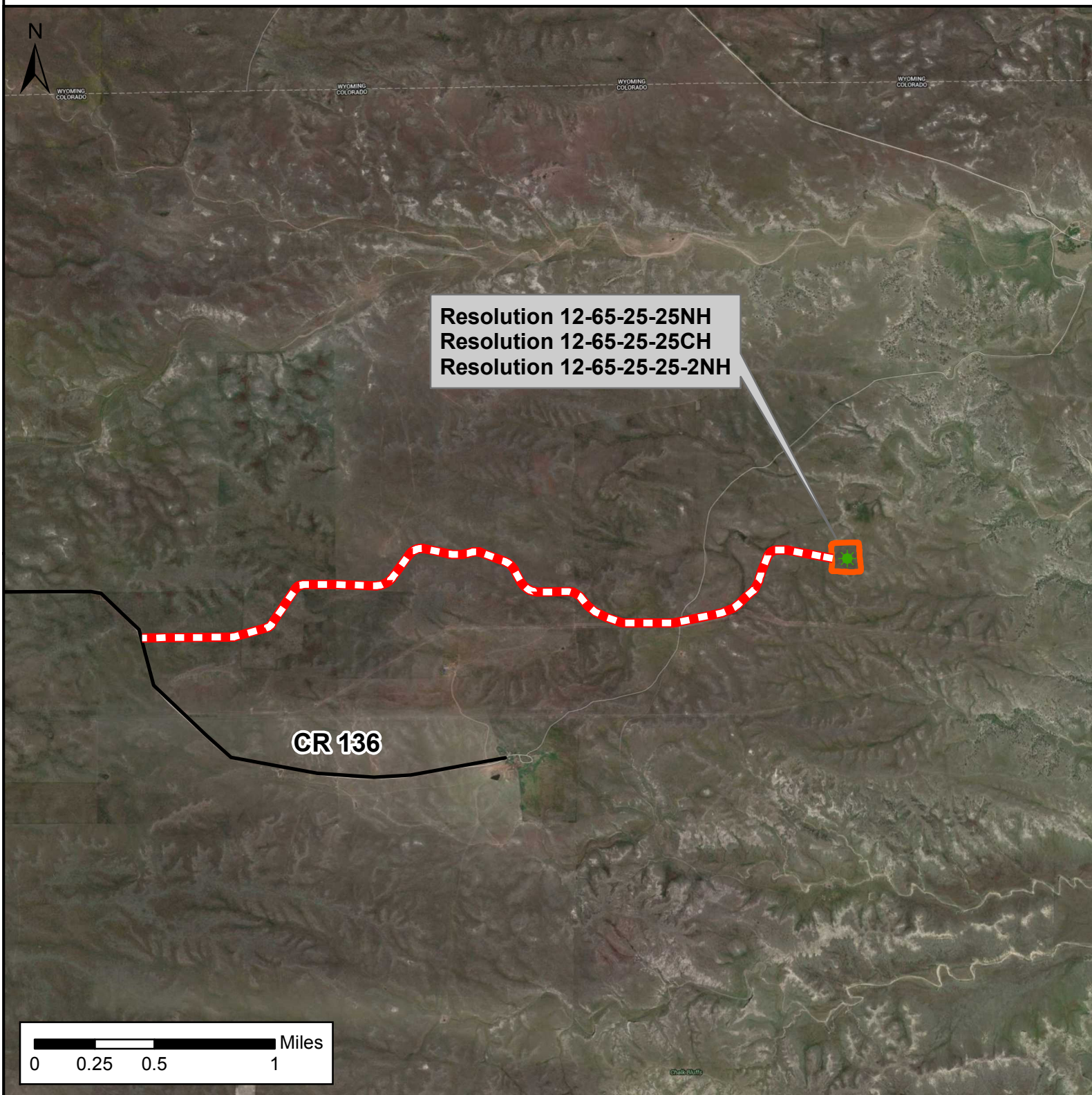


ACCESS ROAD MAP





RESOLUTION 12-65-25-25-2NH



Access Road Map

Resolution 12-65-25-25NH
Resolution 12-65-25-25CH
Resolution 12-65-25-25-2NH
Location in Section 25
T12N, R65W 6th P.M.
Weld County, Colorado

Legend

-  Well- Proposed
-  Access Road- Proposed
-  Pad- Proposed
-  County Road - Existing



Date created: 1/13/2016
Created by: APC Regulatory GIS
Scale: 1:35,000
Projection: NAD83 UTM 13N