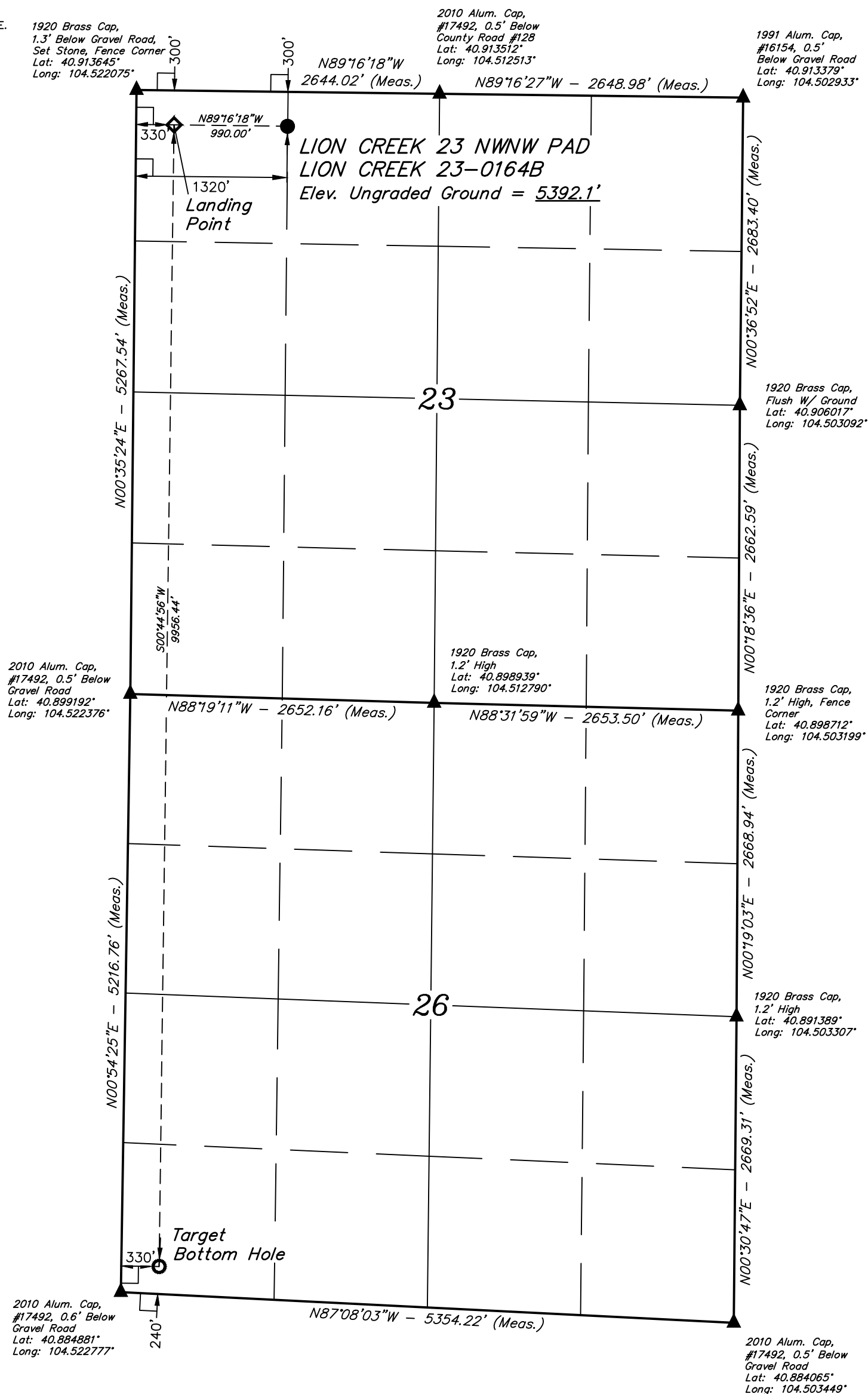


T11N, R64W, 6th P.M.

- 1920 Brass Cap,
1.3' Below Gravel Road,
Set Stone, Fence Corner
Lat: 40.913645°
Long: 104.522075°

2010 Alum. Cap,
#17492, 0.5' Below
County Road #128
Lat: 40.913512°
Long: 104.512513°

1991 Alum. Cap,
#16154, 0.5'
Below Gravel Road
Lat: 40.913379°
Long: 104.502933°



A horizontal scale bar with alternating black and white segments. Above the bar, the markings 1000', 500', 0', 500', and 1000' are printed from left to right.

NAD 83 (SURFACE LOCATION)	NAD 83 (LANDING POINT)	NAD 83 (TARGET BOTTOM HOLE)
LATITUDE = 40°54'45.92" (40.912756°)	LATITUDE = 40°54'46.10" (40.912805°)	LATITUDE = 40°53'07.76" (40.885489°)
LONGITUDE = 104°31'02.35" (104.517319°)	LONGITUDE = 104°31'15.24" (104.520899°)	LONGITUDE = 104°31'17.64" (104.521567°)
NAD 27 (SURFACE LOCATION)	NAD 27 (LANDING POINT)	NAD 27 (TARGET BOTTOM HOLE)
LATITUDE = 40°54'45.98" (40.912774°)	LATITUDE = 40°54'46.16" (40.912823°)	LATITUDE = 40°53'07.83" (40.885508°)
LONGITUDE = 104°31'00.49" (104.516804°)	LONGITUDE = 104°31'13.38" (104.520384°)	LONGITUDE = 104°31'15.79" (104.521052°)
STATE PLANE NAD 83 (CO. NORTH)	STATE PLANE NAD 83 (CO. NORTH)	STATE PLANE NAD 83 (CO. NORTH)
N: 1576873.63' E: 3271611.17'	N: 1576880.70' E: 3270621.41'	N: 1566926.82' E: 3270546.72'
STATE PLANE NAD 27 (CO. NORTH)	STATE PLANE NAD 27 (CO. NORTH)	STATE PLANE NAD 27 (CO. NORTH)
N: 576871.73' E: 2271760.74'	N: 576878.80' E: 2270770.99'	N: 566925.13' E: 2270696.26'

CERTIFICATE

THIS IS TO CERTIFY THAT THE ABOVE MAP WAS PREPARED FROM FIELD NOTES OF ACTUAL SURVEYS MADE BY ME OR UNDER MY SUPERVISION, AND THAT THE SAME ARE TRUE AND CORRECT TO THE BEST OF MY KNOWLEDGE AND BELIEF.

REGISTERED LAND SURVEYOR
REGISTRATION NO. 28285
STATE OF COLORADO

BASIS OF BEARINGS
TRANSVERSE MERCATOR PROJECTION WITH
A CENTRAL MERIDIAN OF W105°00'00".

BASIS OF ELEVATION
OPUS SOLUTION GENERATED NAVD 88



UELS, LLC
Corporate Office * 85 South 200 East
Vernal, UT 84078 * (435) 789-1017



HIGHPOINT OPERATING CORPORATION

**LION CREEK 23 NWNW PAD
LION CREEK 23-0164B
NW 1/4 NW 1/4, SECTION 23, T11N, R64W, 6th P.M.
WELD COUNTY, COLORADO**

SURVEYED BY	JONATHON BAYLIFF, R.W.	06-01-18	SCALE
DRAWN BY	C.C.	06-08-18	1" = 1000'

WELL LOCATION PLAT