

VERDAD RESOURCES

WATTENBERG FIELD

1N-65W-30 JOHNSON PAD

JOHNSON 01N-65W-30-10H

Wellbore #1

Plan: Design #2

Standard Planning Report

05 June, 2018

Project: WATTENBERG FIELD
Site: 1N-65W-30 JOHNSON PAD
Well: JOHNSON 01N-65W-30-10H
Wellbore: Wellbore #1
Design: Design #2

VERDAD RESOURCES

CASING DETAILS

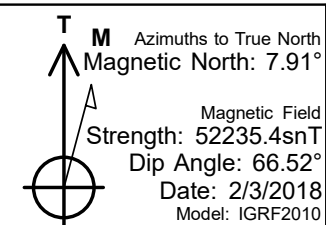
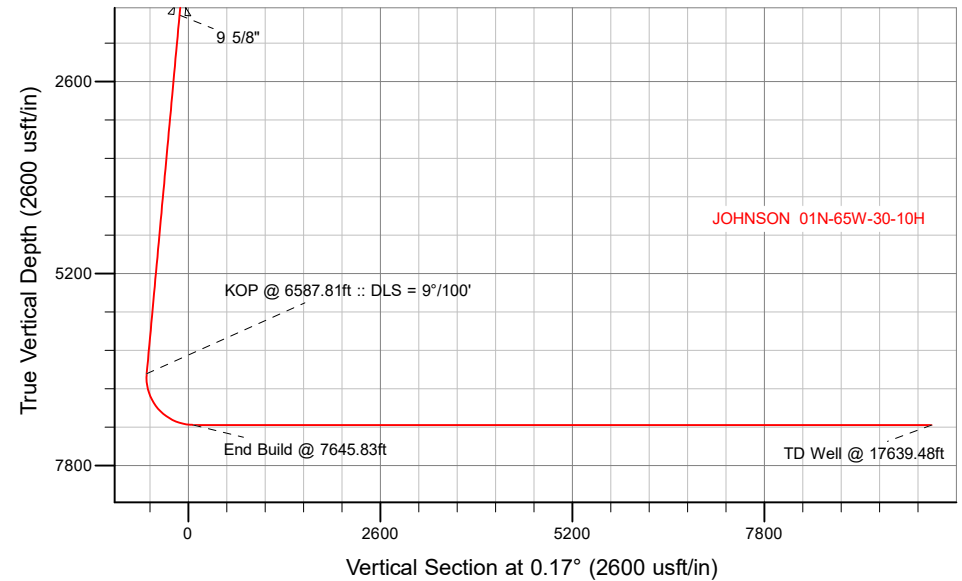
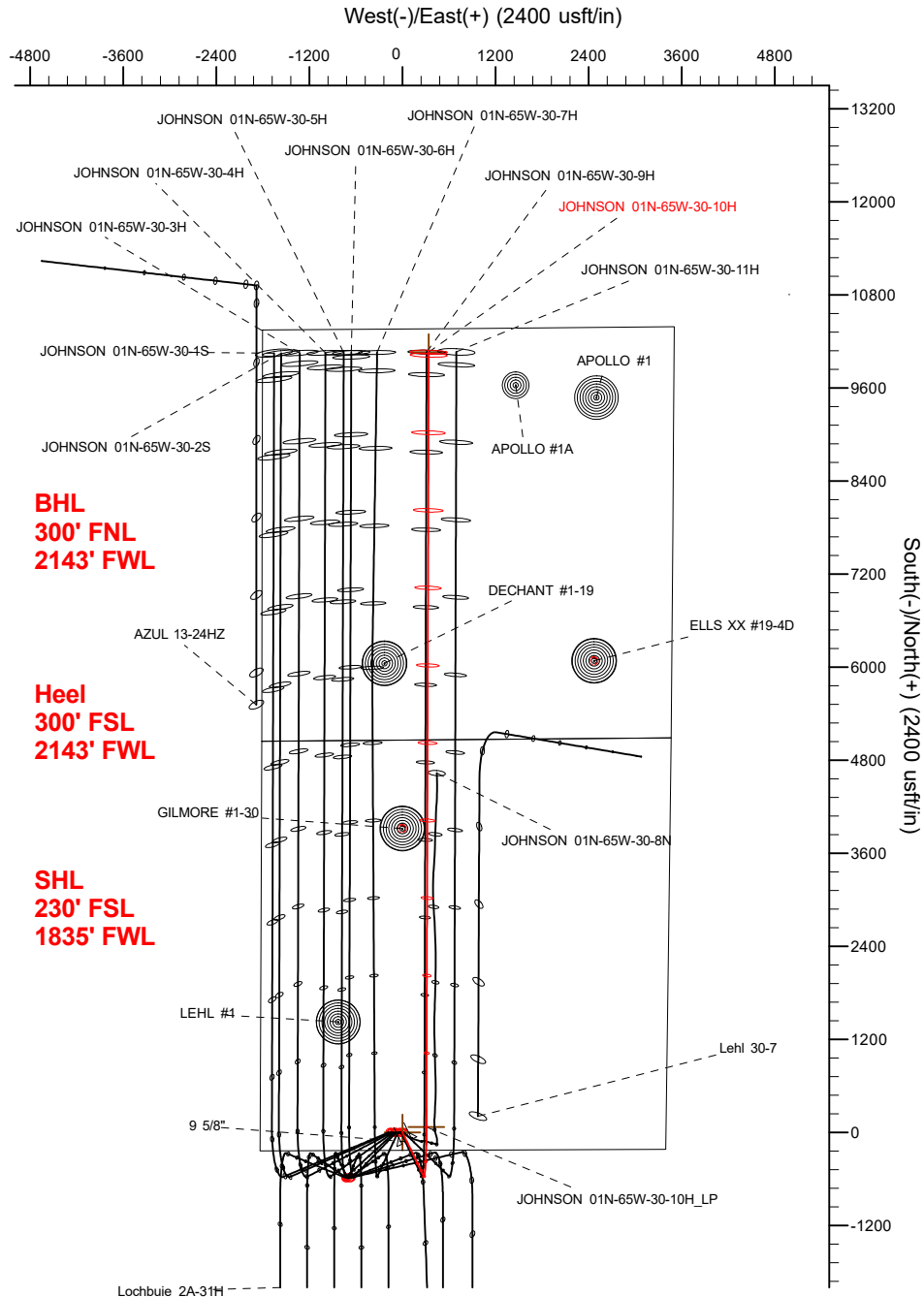
TVD	MD	Name	Size
1700.00	1706.51	9 5/8"	9-5/8

SECTION DETAILS

Sec	MD	Inc	Azi	TVD	+N/-S	+E/-W	Dleg	TFace	VSect	Target
1	0.00	0.00	0.00	0.00	0.00	0.00	0.00	0.00	0.00	
2	250.00	0.00	0.00	250.00	0.00	0.00	0.00	0.00	0.00	
3	541.00	5.82	154.00	540.50	-13.27	6.47	2.00	154.00	-13.25	
4	6587.81	5.82	154.00	6556.14	-564.38	275.27	0.00	0.00	-563.57	
5	7645.83	90.00	0.17	7250.00	69.50	308.32	9.00	-153.71	70.41	
6	17639.48	90.00	0.17	7250.00	10063.11	337.65	0.00	0.00	10064.06	JOHNSON 01N-65W-30-10H_BHL

WELLBORE TARGET DETAILS (LAT/LONG)

Name	TVD	+N/-S	+E/-W	Latitude	Longitude
JOHNSON 01N-65W-30-10H_SHL	0.00	0.00	0.00	40.015686	-104.709598
JOHNSON 01N-65W-30-10H_BHL	7250.00	10063.11	337.65	40.043311	-104.708392



WELL DETAILS: JOHNSON 01N-65W-30-10H

GL = 4999'

RKB = 20' @ 5019.00usft (RIG)

Plan: Design #2 (JOHNSON 01N-65W-30-10H/Wellbore #1)

Date: 6/5/2018

Hewlett-Packard

Planning Report

Database:	EDM 5000.14 Single User Db	Local Co-ordinate Reference:	Well JOHNSON 01N-65W-30-10H
Company:	VERDAD RESOURCES	TVD Reference:	RKB = 20' @ 5019.00usft (RIG)
Project:	WATTENBERG FIELD	MD Reference:	RKB = 20' @ 5019.00usft (RIG)
Site:	1N-65W-30 JOHNSON PAD	North Reference:	True
Well:	JOHNSON 01N-65W-30-10H	Survey Calculation Method:	Minimum Curvature
Wellbore:	Wellbore #1		
Design:	Design #2		

Project	WATTENBERG FIELD		
Map System:	US State Plane 1983	System Datum:	Mean Sea Level
Geo Datum:	North American Datum 1983		
Map Zone:	Colorado Northern Zone		

Site		1N-65W-30 JOHNSON PAD			
Site Position:		Northing:	1,249,544.93 usft	Latitude:	40.015680
From:	Map	Easting:	3,221,340.35 usft	Longitude:	-104.709740
Position Uncertainty:	0.00 usft	Slot Radius:	13-3/16 "	Grid Convergence:	0.51 °

Well	JOHNSON 01N-65W-30-10H					
Well Position	+N/-S	2.18 usft	Northing:	1,249,547.47 usft	Latitude:	40.015686
	+E/-W	39.77 usft	Easting:	3,221,380.10 usft	Longitude:	-104.709598
Position Uncertainty		3.28 usft	Wellhead Elevation:		Ground Level:	4,999.00 usft

Wellbore	Wellbore #1				
Magnetics	Model Name	Sample Date	Declination (°)	Dip Angle (°)	Field Strength (nT)
	IGRF2010	2/3/2018	7.91	66.52	52,235.37151654

Design	Design #2			
Audit Notes:				
Version:	Phase:	PLAN	Tie On Depth:	0.00
Vertical Section:	Depth From (TVD) (usft)	+N/-S (usft)	+E/-W (usft)	Direction (°)
	0.00	0.00	0.00	0.17

Plan Survey Tool Program	Date	6/5/2018			
Depth From (usft)	Depth To (usft)	Survey (Wellbore)	Tool Name	Remarks	
1	0.00	1,700.00	Design #2 (Wellbore #1)	ISCWSA REV 2 MWD	
				Fixed:v2:standard declination	
2	1,700.00	17,639.48	Design #2 (Wellbore #1)	ISCWSA REV 2 MWD	
				Fixed:v2:standard declination	

Plan Sections										
Measured Depth (usft)	Inclination (°)	Azimuth (°)	Vertical Depth (usft)	+N/-S (usft)	+E/-W (usft)	Dogleg Rate (°/100usft)	Build Rate (°/100usft)	Turn Rate (°/100usft)	TFO (°)	Target
0.00	0.00	0.00	0.00	0.00	0.00	0.00	0.00	0.00	0.00	
250.00	0.00	0.00	250.00	0.00	0.00	0.00	0.00	0.00	0.00	
541.00	5.82	154.00	540.50	-13.27	6.47	2.00	2.00	0.00	154.00	
6,587.81	5.82	154.00	6,556.14	-564.38	275.27	0.00	0.00	0.00	0.00	
7,645.83	90.00	0.17	7,250.00	69.50	308.32	9.00	7.96	-14.54	-153.71	
17,639.48	90.00	0.17	7,250.00	10,063.11	337.65	0.00	0.00	0.00	0.00	JOHNSON 01N-65W-

Hewlett-Packard

Planning Report

Database:	EDM 5000.14 Single User Db	Local Co-ordinate Reference:	Well JOHNSON 01N-65W-30-10H
Company:	VERDAD RESOURCES	TVD Reference:	RKB = 20' @ 5019.00usft (RIG)
Project:	WATTENBERG FIELD	MD Reference:	RKB = 20' @ 5019.00usft (RIG)
Site:	1N-65W-30 JOHNSON PAD	North Reference:	True
Well:	JOHNSON 01N-65W-30-10H	Survey Calculation Method:	Minimum Curvature
Wellbore:	Wellbore #1		
Design:	Design #2		

Planned Survey									
Measured Depth (usft)	Inclination (°)	Azimuth (°)	Vertical Depth (usft)	+N/-S (usft)	+E/-W (usft)	Vertical Section (usft)	Dogleg Rate (°/100usft)	Build Rate (°/100usft)	Turn Rate (°/100usft)
0.00	0.00	0.00	0.00	0.00	0.00	0.00	0.00	0.00	0.00
100.00	0.00	0.00	100.00	0.00	0.00	0.00	0.00	0.00	0.00
200.00	0.00	0.00	200.00	0.00	0.00	0.00	0.00	0.00	0.00
250.00	0.00	0.00	250.00	0.00	0.00	0.00	0.00	0.00	0.00
Begin Tangent @ 250.00ft									
300.00	1.00	154.00	300.00	-0.39	0.19	-0.39	2.00	2.00	0.00
400.00	3.00	154.00	399.93	-3.53	1.72	-3.52	2.00	2.00	0.00
500.00	5.00	154.00	499.68	-9.80	4.78	-9.78	2.00	2.00	0.00
541.00	5.82	154.00	540.50	-13.27	6.47	-13.25	2.00	2.00	0.00
End Tangent @ 541.00ft									
600.00	5.82	154.00	599.20	-18.65	9.10	-18.62	0.00	0.00	0.00
700.00	5.82	154.00	698.68	-27.76	13.54	-27.72	0.00	0.00	0.00
800.00	5.82	154.00	798.16	-36.88	17.99	-36.82	0.00	0.00	0.00
900.00	5.82	154.00	897.65	-45.99	22.43	-45.93	0.00	0.00	0.00
1,000.00	5.82	154.00	997.13	-55.11	26.88	-55.03	0.00	0.00	0.00
1,100.00	5.82	154.00	1,096.62	-64.22	31.32	-64.13	0.00	0.00	0.00
1,200.00	5.82	154.00	1,196.10	-73.33	35.77	-73.23	0.00	0.00	0.00
1,300.00	5.82	154.00	1,295.59	-82.45	40.21	-82.33	0.00	0.00	0.00
1,400.00	5.82	154.00	1,395.07	-91.56	44.66	-91.43	0.00	0.00	0.00
1,500.00	5.82	154.00	1,494.56	-100.68	49.10	-100.53	0.00	0.00	0.00
1,600.00	5.82	154.00	1,594.04	-109.79	53.55	-109.63	0.00	0.00	0.00
1,700.00	5.82	154.00	1,693.53	-118.90	57.99	-118.73	0.00	0.00	0.00
1,706.51	5.82	154.00	1,700.00	-119.50	58.28	-119.32	0.00	0.00	0.00
9 5/8"									
1,800.00	5.82	154.00	1,793.01	-128.02	62.44	-127.83	0.00	0.00	0.00
1,900.00	5.82	154.00	1,892.49	-137.13	66.88	-136.93	0.00	0.00	0.00
2,000.00	5.82	154.00	1,991.98	-146.25	71.33	-146.03	0.00	0.00	0.00
2,100.00	5.82	154.00	2,091.46	-155.36	75.77	-155.14	0.00	0.00	0.00
2,200.00	5.82	154.00	2,190.95	-164.48	80.22	-164.24	0.00	0.00	0.00
2,300.00	5.82	154.00	2,290.43	-173.59	84.67	-173.34	0.00	0.00	0.00
2,400.00	5.82	154.00	2,389.92	-182.70	89.11	-182.44	0.00	0.00	0.00
2,500.00	5.82	154.00	2,489.40	-191.82	93.56	-191.54	0.00	0.00	0.00
2,600.00	5.82	154.00	2,588.89	-200.93	98.00	-200.64	0.00	0.00	0.00
2,700.00	5.82	154.00	2,688.37	-210.05	102.45	-209.74	0.00	0.00	0.00
2,800.00	5.82	154.00	2,787.86	-219.16	106.89	-218.84	0.00	0.00	0.00
2,900.00	5.82	154.00	2,887.34	-228.27	111.34	-227.94	0.00	0.00	0.00
3,000.00	5.82	154.00	2,986.82	-237.39	115.78	-237.04	0.00	0.00	0.00
3,100.00	5.82	154.00	3,086.31	-246.50	120.23	-246.14	0.00	0.00	0.00
3,200.00	5.82	154.00	3,185.79	-255.62	124.67	-255.25	0.00	0.00	0.00
3,300.00	5.82	154.00	3,285.28	-264.73	129.12	-264.35	0.00	0.00	0.00
3,400.00	5.82	154.00	3,384.76	-273.84	133.56	-273.45	0.00	0.00	0.00
3,500.00	5.82	154.00	3,484.25	-282.96	138.01	-282.55	0.00	0.00	0.00
3,600.00	5.82	154.00	3,583.73	-292.07	142.45	-291.65	0.00	0.00	0.00
3,700.00	5.82	154.00	3,683.22	-301.19	146.90	-300.75	0.00	0.00	0.00
3,800.00	5.82	154.00	3,782.70	-310.30	151.34	-309.85	0.00	0.00	0.00
3,900.00	5.82	154.00	3,882.19	-319.41	155.79	-318.95	0.00	0.00	0.00
4,000.00	5.82	154.00	3,981.67	-328.53	160.23	-328.05	0.00	0.00	0.00
4,100.00	5.82	154.00	4,081.15	-337.64	164.68	-337.15	0.00	0.00	0.00
4,200.00	5.82	154.00	4,180.64	-346.76	169.12	-346.25	0.00	0.00	0.00
4,300.00	5.82	154.00	4,280.12	-355.87	173.57	-355.35	0.00	0.00	0.00
4,400.00	5.82	154.00	4,379.61	-364.99	178.02	-364.46	0.00	0.00	0.00
4,500.00	5.82	154.00	4,479.09	-374.10	182.46	-373.56	0.00	0.00	0.00
4,600.00	5.82	154.00	4,578.58	-383.21	186.91	-382.66	0.00	0.00	0.00

Hewlett-Packard

Planning Report

Database:	EDM 5000.14 Single User Db	Local Co-ordinate Reference:	Well JOHNSON 01N-65W-30-10H
Company:	VERDAD RESOURCES	TVD Reference:	RKB = 20' @ 5019.00usft (RIG)
Project:	WATTENBERG FIELD	MD Reference:	RKB = 20' @ 5019.00usft (RIG)
Site:	1N-65W-30 JOHNSON PAD	North Reference:	True
Well:	JOHNSON 01N-65W-30-10H	Survey Calculation Method:	Minimum Curvature
Wellbore:	Wellbore #1		
Design:	Design #2		

Planned Survey									
Measured Depth (usft)	Inclination (°)	Azimuth (°)	Vertical Depth (usft)	+N/-S (usft)	+E/-W (usft)	Vertical Section (usft)	Dogleg Rate (°/100usft)	Build Rate (°/100usft)	Turn Rate (°/100usft)
4,700.00	5.82	154.00	4,678.06	-392.33	191.35	-391.76	0.00	0.00	0.00
4,800.00	5.82	154.00	4,777.55	-401.44	195.80	-400.86	0.00	0.00	0.00
4,900.00	5.82	154.00	4,877.03	-410.56	200.24	-409.96	0.00	0.00	0.00
5,000.00	5.82	154.00	4,976.52	-419.67	204.69	-419.06	0.00	0.00	0.00
5,100.00	5.82	154.00	5,076.00	-428.78	209.13	-428.16	0.00	0.00	0.00
5,200.00	5.82	154.00	5,175.48	-437.90	213.58	-437.26	0.00	0.00	0.00
5,300.00	5.82	154.00	5,274.97	-447.01	218.02	-446.36	0.00	0.00	0.00
5,400.00	5.82	154.00	5,374.45	-456.13	222.47	-455.46	0.00	0.00	0.00
5,500.00	5.82	154.00	5,473.94	-465.24	226.91	-464.56	0.00	0.00	0.00
5,600.00	5.82	154.00	5,573.42	-474.35	231.36	-473.67	0.00	0.00	0.00
5,700.00	5.82	154.00	5,672.91	-483.47	235.80	-482.77	0.00	0.00	0.00
5,800.00	5.82	154.00	5,772.39	-492.58	240.25	-491.87	0.00	0.00	0.00
5,900.00	5.82	154.00	5,871.88	-501.70	244.69	-500.97	0.00	0.00	0.00
6,000.00	5.82	154.00	5,971.36	-510.81	249.14	-510.07	0.00	0.00	0.00
6,100.00	5.82	154.00	6,070.85	-519.92	253.58	-519.17	0.00	0.00	0.00
6,200.00	5.82	154.00	6,170.33	-529.04	258.03	-528.27	0.00	0.00	0.00
6,300.00	5.82	154.00	6,269.81	-538.15	262.47	-537.37	0.00	0.00	0.00
6,400.00	5.82	154.00	6,369.30	-547.27	266.92	-546.47	0.00	0.00	0.00
6,500.00	5.82	154.00	6,468.78	-556.38	271.37	-555.57	0.00	0.00	0.00
6,587.81	5.82	154.00	6,556.14	-564.38	275.27	-563.57	0.00	0.00	0.00
KOP @ 6587.81ft :: DLS = 9°/100'									
6,600.00	4.86	148.26	6,568.28	-565.38	275.81	-564.56	9.00	-7.87	-47.11
6,700.00	5.51	27.93	6,668.07	-564.74	280.30	-563.90	9.00	0.65	-120.32
6,800.00	14.11	10.47	6,766.54	-548.48	284.77	-547.63	9.00	8.60	-17.46
6,900.00	23.01	6.24	6,861.24	-517.00	289.12	-516.14	9.00	8.90	-4.23
7,000.00	31.97	4.30	6,949.86	-471.08	293.24	-470.20	9.00	8.96	-1.95
7,100.00	40.94	3.14	7,030.22	-411.84	297.03	-410.96	9.00	8.97	-1.16
7,200.00	49.92	2.34	7,100.32	-340.75	300.39	-339.86	9.00	8.98	-0.80
7,300.00	58.91	1.72	7,158.45	-259.56	303.24	-258.66	9.00	8.99	-0.61
7,400.00	67.90	1.21	7,203.17	-170.26	305.51	-169.35	9.00	8.99	-0.51
7,500.00	76.89	0.77	7,233.39	-75.06	307.15	-74.14	9.00	8.99	-0.45
7,600.00	85.88	0.35	7,248.35	23.71	308.11	24.62	9.00	8.99	-0.41
7,645.83	90.00	0.17	7,250.00	69.50	308.32	70.41	9.00	8.99	-0.40
End Build @ 7645.83ft									
7,700.00	90.00	0.17	7,250.00	123.67	308.48	124.58	0.00	0.00	0.00
7,800.00	90.00	0.17	7,250.00	223.67	308.77	224.58	0.00	0.00	0.00
7,900.00	90.00	0.17	7,250.00	323.67	309.07	324.58	0.00	0.00	0.00
8,000.00	90.00	0.17	7,250.00	423.67	309.36	424.58	0.00	0.00	0.00
8,100.00	90.00	0.17	7,250.00	523.67	309.65	524.58	0.00	0.00	0.00
8,200.00	90.00	0.17	7,250.00	623.67	309.95	624.58	0.00	0.00	0.00
8,300.00	90.00	0.17	7,250.00	723.67	310.24	724.58	0.00	0.00	0.00
8,400.00	90.00	0.17	7,250.00	823.67	310.53	824.58	0.00	0.00	0.00
8,500.00	90.00	0.17	7,250.00	923.67	310.83	924.58	0.00	0.00	0.00
8,600.00	90.00	0.17	7,250.00	1,023.67	311.12	1,024.58	0.00	0.00	0.00
8,700.00	90.00	0.17	7,250.00	1,123.67	311.41	1,124.58	0.00	0.00	0.00
8,800.00	90.00	0.17	7,250.00	1,223.67	311.71	1,224.58	0.00	0.00	0.00
8,900.00	90.00	0.17	7,250.00	1,323.66	312.00	1,324.58	0.00	0.00	0.00
9,000.00	90.00	0.17	7,250.00	1,423.66	312.29	1,424.58	0.00	0.00	0.00
9,100.00	90.00	0.17	7,250.00	1,523.66	312.59	1,524.58	0.00	0.00	0.00
9,200.00	90.00	0.17	7,250.00	1,623.66	312.88	1,624.58	0.00	0.00	0.00
9,300.00	90.00	0.17	7,250.00	1,723.66	313.17	1,724.58	0.00	0.00	0.00
9,400.00	90.00	0.17	7,250.00	1,823.66	313.47	1,824.58	0.00	0.00	0.00
9,500.00	90.00	0.17	7,250.00	1,923.66	313.76	1,924.58	0.00	0.00	0.00
9,600.00	90.00	0.17	7,250.00	2,023.66	314.05	2,024.58	0.00	0.00	0.00

Hewlett-Packard

Planning Report

Database:	EDM 5000.14 Single User Db	Local Co-ordinate Reference:	Well JOHNSON 01N-65W-30-10H
Company:	VERDAD RESOURCES	TVD Reference:	RKB = 20' @ 5019.00usft (RIG)
Project:	WATTENBERG FIELD	MD Reference:	RKB = 20' @ 5019.00usft (RIG)
Site:	1N-65W-30 JOHNSON PAD	North Reference:	True
Well:	JOHNSON 01N-65W-30-10H	Survey Calculation Method:	Minimum Curvature
Wellbore:	Wellbore #1		
Design:	Design #2		

Planned Survey										
Measured Depth (usft)	Inclination (°)	Azimuth (°)	Vertical Depth (usft)	+N/-S (usft)	+E/-W (usft)	Vertical Section (usft)	Dogleg Rate (°/100usft)	Build Rate (°/100usft)	Turn Rate (°/100usft)	
9,700.00	90.00	0.17	7,250.00	2,123.66	314.35	2,124.58	0.00	0.00	0.00	
9,800.00	90.00	0.17	7,250.00	2,223.66	314.64	2,224.58	0.00	0.00	0.00	
9,900.00	90.00	0.17	7,250.00	2,323.66	314.94	2,324.58	0.00	0.00	0.00	
10,000.00	90.00	0.17	7,250.00	2,423.66	315.23	2,424.58	0.00	0.00	0.00	
10,100.00	90.00	0.17	7,250.00	2,523.66	315.52	2,524.58	0.00	0.00	0.00	
10,200.00	90.00	0.17	7,250.00	2,623.66	315.82	2,624.58	0.00	0.00	0.00	
10,300.00	90.00	0.17	7,250.00	2,723.66	316.11	2,724.58	0.00	0.00	0.00	
10,400.00	90.00	0.17	7,250.00	2,823.66	316.40	2,824.58	0.00	0.00	0.00	
10,500.00	90.00	0.17	7,250.00	2,923.66	316.70	2,924.58	0.00	0.00	0.00	
10,600.00	90.00	0.17	7,250.00	3,023.66	316.99	3,024.58	0.00	0.00	0.00	
10,700.00	90.00	0.17	7,250.00	3,123.66	317.28	3,124.58	0.00	0.00	0.00	
10,800.00	90.00	0.17	7,250.00	3,223.66	317.58	3,224.58	0.00	0.00	0.00	
10,900.00	90.00	0.17	7,250.00	3,323.66	317.87	3,324.58	0.00	0.00	0.00	
11,000.00	90.00	0.17	7,250.00	3,423.66	318.16	3,424.58	0.00	0.00	0.00	
11,100.00	90.00	0.17	7,250.00	3,523.66	318.46	3,524.58	0.00	0.00	0.00	
11,200.00	90.00	0.17	7,250.00	3,623.65	318.75	3,624.58	0.00	0.00	0.00	
11,300.00	90.00	0.17	7,250.00	3,723.65	319.04	3,724.58	0.00	0.00	0.00	
11,400.00	90.00	0.17	7,250.00	3,823.65	319.34	3,824.58	0.00	0.00	0.00	
11,500.00	90.00	0.17	7,250.00	3,923.65	319.63	3,924.58	0.00	0.00	0.00	
11,600.00	90.00	0.17	7,250.00	4,023.65	319.92	4,024.58	0.00	0.00	0.00	
11,700.00	90.00	0.17	7,250.00	4,123.65	320.22	4,124.58	0.00	0.00	0.00	
11,800.00	90.00	0.17	7,250.00	4,223.65	320.51	4,224.58	0.00	0.00	0.00	
11,900.00	90.00	0.17	7,250.00	4,323.65	320.81	4,324.58	0.00	0.00	0.00	
12,000.00	90.00	0.17	7,250.00	4,423.65	321.10	4,424.58	0.00	0.00	0.00	
12,100.00	90.00	0.17	7,250.00	4,523.65	321.39	4,524.58	0.00	0.00	0.00	
12,200.00	90.00	0.17	7,250.00	4,623.65	321.69	4,624.58	0.00	0.00	0.00	
12,300.00	90.00	0.17	7,250.00	4,723.65	321.98	4,724.58	0.00	0.00	0.00	
12,400.00	90.00	0.17	7,250.00	4,823.65	322.27	4,824.58	0.00	0.00	0.00	
12,500.00	90.00	0.17	7,250.00	4,923.65	322.57	4,924.58	0.00	0.00	0.00	
12,600.00	90.00	0.17	7,250.00	5,023.65	322.86	5,024.58	0.00	0.00	0.00	
12,700.00	90.00	0.17	7,250.00	5,123.65	323.15	5,124.58	0.00	0.00	0.00	
12,800.00	90.00	0.17	7,250.00	5,223.65	323.45	5,224.58	0.00	0.00	0.00	
12,900.00	90.00	0.17	7,250.00	5,323.65	323.74	5,324.58	0.00	0.00	0.00	
13,000.00	90.00	0.17	7,250.00	5,423.65	324.03	5,424.58	0.00	0.00	0.00	
13,100.00	90.00	0.17	7,250.00	5,523.65	324.33	5,524.58	0.00	0.00	0.00	
13,200.00	90.00	0.17	7,250.00	5,623.65	324.62	5,624.58	0.00	0.00	0.00	
13,300.00	90.00	0.17	7,250.00	5,723.65	324.91	5,724.58	0.00	0.00	0.00	
13,400.00	90.00	0.17	7,250.00	5,823.65	325.21	5,824.58	0.00	0.00	0.00	
13,500.00	90.00	0.17	7,250.00	5,923.65	325.50	5,924.58	0.00	0.00	0.00	
13,600.00	90.00	0.17	7,250.00	6,023.64	325.79	6,024.58	0.00	0.00	0.00	
13,700.00	90.00	0.17	7,250.00	6,123.64	326.09	6,124.58	0.00	0.00	0.00	
13,800.00	90.00	0.17	7,250.00	6,223.64	326.38	6,224.58	0.00	0.00	0.00	
13,900.00	90.00	0.17	7,250.00	6,323.64	326.68	6,324.58	0.00	0.00	0.00	
14,000.00	90.00	0.17	7,250.00	6,423.64	326.97	6,424.58	0.00	0.00	0.00	
14,100.00	90.00	0.17	7,250.00	6,523.64	327.26	6,524.58	0.00	0.00	0.00	
14,200.00	90.00	0.17	7,250.00	6,623.64	327.56	6,624.58	0.00	0.00	0.00	
14,300.00	90.00	0.17	7,250.00	6,723.64	327.85	6,724.58	0.00	0.00	0.00	
14,400.00	90.00	0.17	7,250.00	6,823.64	328.14	6,824.58	0.00	0.00	0.00	
14,500.00	90.00	0.17	7,250.00	6,923.64	328.44	6,924.58	0.00	0.00	0.00	
14,600.00	90.00	0.17	7,250.00	7,023.64	328.73	7,024.58	0.00	0.00	0.00	
14,700.00	90.00	0.17	7,250.00	7,123.64	329.02	7,124.58	0.00	0.00	0.00	
14,800.00	90.00	0.17	7,250.00	7,223.64	329.32	7,224.58	0.00	0.00	0.00	
14,900.00	90.00	0.17	7,250.00	7,323.64	329.61	7,324.58	0.00	0.00	0.00	
15,000.00	90.00	0.17	7,250.00	7,423.64	329.90	7,424.58	0.00	0.00	0.00	

Hewlett-Packard

Planning Report

Database:	EDM 5000.14 Single User Db	Local Co-ordinate Reference:	Well JOHNSON 01N-65W-30-10H
Company:	VERDAD RESOURCES	TVD Reference:	RKB = 20' @ 5019.00usft (RIG)
Project:	WATTENBERG FIELD	MD Reference:	RKB = 20' @ 5019.00usft (RIG)
Site:	1N-65W-30 JOHNSON PAD	North Reference:	True
Well:	JOHNSON 01N-65W-30-10H	Survey Calculation Method:	Minimum Curvature
Wellbore:	Wellbore #1		
Design:	Design #2		

Planned Survey									
Measured Depth (usft)	Inclination (°)	Azimuth (°)	Vertical Depth (usft)	+N/-S (usft)	+E/-W (usft)	Vertical Section (usft)	Dogleg Rate (°/100usft)	Build Rate (°/100usft)	Turn Rate (°/100usft)
15,100.00	90.00	0.17	7,250.00	7,523.64	330.20	7,524.58	0.00	0.00	0.00
15,200.00	90.00	0.17	7,250.00	7,623.64	330.49	7,624.58	0.00	0.00	0.00
15,300.00	90.00	0.17	7,250.00	7,723.64	330.78	7,724.58	0.00	0.00	0.00
15,400.00	90.00	0.17	7,250.00	7,823.64	331.08	7,824.58	0.00	0.00	0.00
15,500.00	90.00	0.17	7,250.00	7,923.64	331.37	7,924.58	0.00	0.00	0.00
15,600.00	90.00	0.17	7,250.00	8,023.64	331.66	8,024.58	0.00	0.00	0.00
15,700.00	90.00	0.17	7,250.00	8,123.64	331.96	8,124.58	0.00	0.00	0.00
15,800.00	90.00	0.17	7,250.00	8,223.64	332.25	8,224.58	0.00	0.00	0.00
15,900.00	90.00	0.17	7,250.00	8,323.63	332.55	8,324.58	0.00	0.00	0.00
16,000.00	90.00	0.17	7,250.00	8,423.63	332.84	8,424.58	0.00	0.00	0.00
16,100.00	90.00	0.17	7,250.00	8,523.63	333.13	8,524.58	0.00	0.00	0.00
16,200.00	90.00	0.17	7,250.00	8,623.63	333.43	8,624.58	0.00	0.00	0.00
16,300.00	90.00	0.17	7,250.00	8,723.63	333.72	8,724.58	0.00	0.00	0.00
16,400.00	90.00	0.17	7,250.00	8,823.63	334.01	8,824.58	0.00	0.00	0.00
16,500.00	90.00	0.17	7,250.00	8,923.63	334.31	8,924.58	0.00	0.00	0.00
16,600.00	90.00	0.17	7,250.00	9,023.63	334.60	9,024.58	0.00	0.00	0.00
16,700.00	90.00	0.17	7,250.00	9,123.63	334.89	9,124.58	0.00	0.00	0.00
16,800.00	90.00	0.17	7,250.00	9,223.63	335.19	9,224.58	0.00	0.00	0.00
16,900.00	90.00	0.17	7,250.00	9,323.63	335.48	9,324.58	0.00	0.00	0.00
17,000.00	90.00	0.17	7,250.00	9,423.63	335.77	9,424.58	0.00	0.00	0.00
17,100.00	90.00	0.17	7,250.00	9,523.63	336.07	9,524.58	0.00	0.00	0.00
17,200.00	90.00	0.17	7,250.00	9,623.63	336.36	9,624.58	0.00	0.00	0.00
17,300.00	90.00	0.17	7,250.00	9,723.63	336.65	9,724.58	0.00	0.00	0.00
17,400.00	90.00	0.17	7,250.00	9,823.63	336.95	9,824.58	0.00	0.00	0.00
17,500.00	90.00	0.17	7,250.00	9,923.63	337.24	9,924.58	0.00	0.00	0.00
17,600.00	90.00	0.17	7,250.00	10,023.63	337.53	10,024.58	0.00	0.00	0.00
17,639.48	90.00	0.17	7,250.00	10,063.11	337.65	10,064.06	0.00	0.00	0.00
TD Well @ 17639.48ft									

Casing Points				
Measured Depth (usft)	Vertical Depth (usft)	Name	Casing Diameter (")	Hole Diameter (")
1,706.51	1,700.00	9 5/8"	9-5/8	13-1/2

Plan Annotations				
Measured Depth (usft)	Vertical Depth (usft)	Local Coordinates		Comment
		+N/-S (usft)	+E/-W (usft)	
250.00	250.00	0.00	0.00	Begin Tangent @ 250.00ft
541.00	540.50	-13.27	6.47	End Tangent @ 541.00ft
6,587.81	6,556.14	-564.38	275.27	KOP @ 6587.81ft :: DLS = 9°/100'
7,645.83	7,250.00	69.50	308.32	End Build @ 7645.83ft
17,639.48	7,250.00	10,063.11	337.65	TD Well @ 17639.48ft