



# Bonanza Creek Energy

## Surface Post Job Report

---

State North Platte U41-35-1XRLNB

S:26 T:5N R:63W Weld CO

Quote #:

I Execution #:

---



## Bonanza Creek Energy

Attention: Mr. Joel Dill | (720) 633-5871 | JDill@bonanzacrk.com

Bonanza Creek Energy | 410 17th St Suite 1400 | Denver, CO. 80202

---

Dear Mr. Joel Dill,

Thank you for the opportunity to provide cementing services on this well. BJ Services strives to achieve complete customer satisfaction. If you have any questions regarding the services or data provided, please contact BJ Services at any time.

Sincerely,  
Jacob Ojeda  
Field Engineer I | (763) 516-3012 | jacob.ojeda@bjservices.com

Field Office 1716 East Allison Rd., Cheyenne WY, 82007  
Phone: (307) 638-5585

Sales Office 999 18th St. Suite 1200 Denver, CO 80202  
Phone: (281) 408-2361

---

## Cementing Treatment



<b>Start Date</b>	3/25/2018	<b>Well</b>	U41-35-1XRLNB STATE NORTH PLATTE
<b>End Date</b>	3/25/2018	<b>County</b>	WELD
<b>Client</b>	BONANZA CREEK ENERGY	<b>State/Province</b>	CO
<b>Service Supervisor</b>	Wesley Bell	<b>API</b>	05-123-46431
<b>District</b>	Cheyenne, WY	<b>Type of Job</b>	Surface

### WELL GEOMETRY

Type	ID (in)	OD (in)	Wt. (lb/ft)	MD (ft)	TVD (ft)	Excess(%)
Open Hole	13.50			1,512.00	1,512.00	30.00
Casing	8.92	9.63	36.00	1,502.00	1,502.00	

Shoe Length (ft): 45

### HARDWARE

<b>Bottom Plug Used?</b>	No	<b>Max Casing Pressure - Rated (psi)</b>	3520
<b>Top Plug Used?</b>	Yes	<b>Max Casing Pressure - Operated (psi)</b>	1200
<b>Top Plug Provided By</b>	Customer	<b>Pipe Movement</b>	No
<b>Top Plug Size</b>	9 5/8	<b>Job Pumped Through</b>	Casing
<b>Centralizers Used</b>	Yes	<b>Top Connection Thread</b>	LTC
<b>Landing Collar Depth (ft)</b>	1,457	<b>Top Connection Size</b>	9 5/8"

### CIRCULATION PRIOR TO JOB

<b>Well Circulated By</b>	Customer	<b>YP Mud In</b>	4
<b>Circulation Prior to Job</b>	Yes	<b>YP Mud Out</b>	4
<b>Circulation Time (min)</b>	60	<b>Solids Present at End of Circulation</b>	No
<b>Lost Circulation Prior to Cement Job</b>	No	<b>10 sec SGS</b>	4
<b>Mud Density In (ppg)</b>	8.7	<b>10 min SGS</b>	5
<b>Mud Density Out (ppg)</b>	8.7	<b>30 min SGS</b>	6
<b>PV Mud In</b>	3	<b>Flare Prior to/during the Cement Job</b>	No
<b>PV Mud Out</b>	3	<b>Gas Present</b>	No

### TEMPERATURE

<b>Ambient Temperature (°F)</b>	45	<b>Slurry Cement Temperature (°F)</b>	55
<b>Mix Water Temperature (°F)</b>	51		

## Cementing Treatment



### BJ FLUID DETAILS

Fluid Type	Fluid Name	Density (ppg)	Yield (Cu Ft/sk)	H2O Req. (gals/sk)	Length (Ft)	Vol (sk)	Vol (Cu Ft)	Vol (bbls)
Spacer / Pre Flush / Flush	Water (Pre-flush)	8.3308						20.0000
Tail Slurry	BJCem S100.3.XC	14.5000	1.3901	6.78	1,500.00	698	971.0000	172.8000
Displacement Final	Water	8.3300					0.0000	112.7000

Fluid Type	Fluid Name	Component	Concentration	UOM
Tail Slurry	BJCem S100.3.XC	CEMENT, ASTM TYPE III	100.0000	PCT
Tail Slurry	BJCem S100.3.XC	FOAM PREVENTER, FP-13L	0.0300	GALS/SK

### TREATMENT SUMMARY

Fluid	Rate (bpm)	Fluid Vol. (bbls)	Pipe Pressure (psi)
Water (Pre-flush)	5.00	20.00	50
BJCem S100.3.XC	5.00	172.80	300
Water	0.00	112.70	550

### DISPLACEMENT AND END OF JOB SUMMARY

Displaced By	BJ Services	Amount of Cement Returned/Reversed	17
Calculated Displacement Volume (bbls)	112.7	Method Used to Verify Returns	Visual
Actual Displacement Volume (bbls)	112	Amount Bled Back After Job	0.5
Did Float Hold?	Yes	Total Volume Pumped (bbls)	305.5
Bump Plug	Yes	Top Out Cement Spotted	No
Bump Plug Pressure (psi)	1200	Lost Circulation During Cement Job	No
Were Returns Planned at Surface	Yes	Cement returns During Job	Yes



Customer Name Bonanza Creek  
 Well Name State North Platte U41-35-1XRLNB  
 Job Type Surface

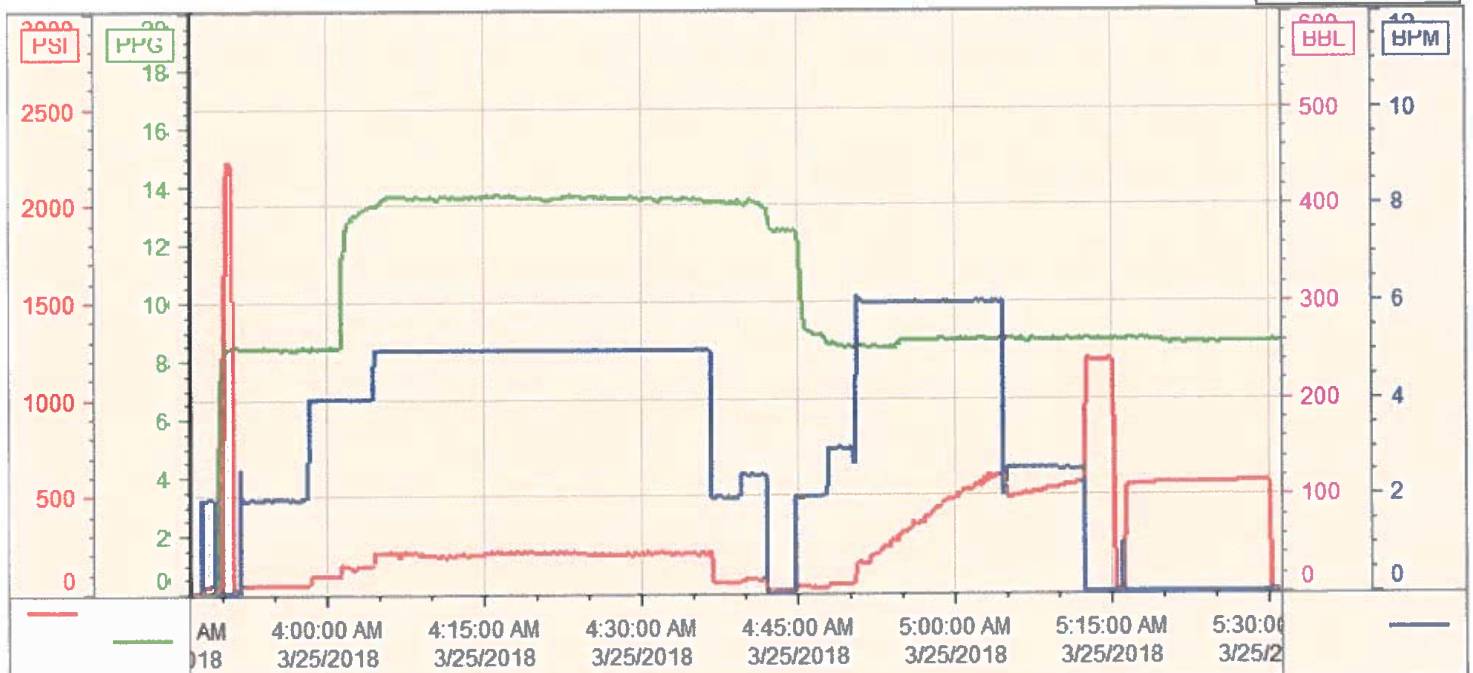
District Cheyenne  
 Supervisor Wesley Bell  
 Engineer Karl Griesser

Seq No.	Start Date/Time	Category	Event	Event ID	Density (lb/gal)	Pump Rate (bpm)	Pump Vol (bbls)	Pipe Pressure (psi)	Comments
1	3/24/2018 19:45	Mobilization	Callout	1					Crew called out requested on locaton at 01:00 on 3/25/2018
2	3/25/2018 0:05	Mobilization	Arrive on Location	48					Crew arrived on location at 00:05, requested time was 01:00
3	3/25/2018 0:10	StandBy	Customer	85					Wait for rig to finish running casing/rig down casing crew
4	3/25/2018 2:30	Operational	Spot Units	49					Spotted all equipment
5	3/25/2018 2:45	Operational	Rig Up	50					Rigged up all equipment
6	3/25/2018 3:10	Operational	Safety Meeting						Safety meeting
7	3/25/2015 3:48	Operational	Start Pumping	55	8.34	2	2	50	Fill lines with 2bbls fresh water
8	3/25/2018 3:51	Operational	Pressure Test	54	8.34			2300	Pressure test lines to 2300psi, no leaks, good test
9	3/25/2018 3:53	Operational	Start Pumping	55	8.34	3	20	100	Pump 20bbls fresh water ahead with red dye
10	3/25/2018 4:01	Operational	Pump Lead Cement	58	14.5	5	172.8	300	Pump 172.8bbls of cement at 14.5ppg, 698sks, Y: 1.39, WR: 6.78, Downhole densometer read 1lb light, weight was confirmed correct at 14.5 with pressurized scale
11	3/25/2018 4:42	Operational	Drop Top Plug	63	8.34	0	0	0	finish mixing cement, shut down, drop top rubber plug 9 5/8" and begin displacing with water
12	3/25/2018 4:58	Operational	Pump Displacement	64	8.34	6	50	450	50bbls of displacement away
13	3/25/2018 5:05	Operational	Pump Displacement	64	8.34	2.5	45	550	95bbls of displacement away, cement to surface
14	3/25/2018 5:13	Operational	Land Plug	67	8.34	2.5	17	650	Land top rubber plug, bump pressure up to 1200psi
15	3/25/2018 5:15	Operational	Check Floats	68	8.34	0	0	0	Floats held, .5bbls back
16	3/25/2018 5:16	Operational	Pressure Test	54	8.34			500	500psi casing test for 15min, pressue did not drop.
17	3/25/2018 5:31	Operational	Rig Down	73					Rig out all BJ equipment, clean pumps and lines to rig cellar.
18	3/25/2018 6:30	Mobilization	Leave Location	74					All BJ equipment and crew leave location

Customer: Bonanza Creek  
Well Number: U41-35-1XRLNB  
Lease Info: State North Platte



Print Date/Time  
3/25/2018 5:45:48 AM



	Name	Y value	X value/time stamp	Tag name Y
1	DS - Press (PSI)	5.2	3/25/2018 3:47:02 AM	CementerDS_DISCHARGE_PRESS_DIAL
2	DH - Density (PPG)	0.01 i.	3/25/2018 3:47:00 AM i.	CementerDENSITY2_ACTUAL_RATE
3	Combined Rate	0.00 i.	3/25/2018 3:47:00 AM i.	CementerFlow_Combined
4				
5				

Source: Control1 5:45:43 AM