



Bonanza Creek Energy

Production Post Job Report

State North Platte U41-35-1XRLNB

S:26 T:5N R:63W Weld CO

Quote #:

| Execution #:



Bonanza Creek Energy

Attention: Mr. Joel Dill | (720) 633-5871 | JDill@bonanzacrk.com

Bonanza Creek Energy | 410 17th St Suite 1400 | Denver, CO. 80202

Dear Mr. Joel Dill,

Thank you for the opportunity to provide cementing services on this well. BJ Services strives to achieve complete customer satisfaction. If you have any questions regarding the services or data provided, please contact BJ Services at any time.

Sincerely,
Jacob Ojeda
Field Engineer I | (763) 516-3012 | jacob.ojeda@bjservices.com

Field Office 1716 East Allison Rd., Cheyenne WY, 82007
Phone: (307) 638-5585

Sales Office 999 18th St. Suite 1200 Denver, CO 80202
Phone: (281) 408-2361

Cementing Treatment



| | | | |
|---------------------------|----------------------|-----------------------|----------------------------------|
| Start Date | 5/6/18 | Well | U41-35-1XRLNB STATE NORTH PLATTE |
| End Date | 5/6/18 | County | WELD |
| Client | BONANZA CREEK ENERGY | State/Province | CO |
| Client Field Rep | Kenny | API | 05-123-46431 |
| Service Supervisor | C. Johnson | Rig | Xtreme 19 |
| District | Cheyenne, WY | Type of Job | Long String |

WELL GEOMETRY

| Type | ID (in) | OD (in) | Wt. (lb/ft) | MD (ft) | TVD (ft) | Excess(%) |
|-----------------|---------|---------|-------------|-----------|----------|-----------|
| Previous Casing | 8.92 | 9.63 | 36.00 | 1,502.00 | 1,502.00 | |
| Open Hole | 8.50 | | | 16,809.00 | 6,275.00 | 12.50 |
| Casing | 4.89 | 5.50 | 17.00 | 16,798.00 | 6,275.00 | |

Shoe Length (ft): 42

HARDWARE

| | | | |
|------------------------------|----------------|----------------------------------|-------------|
| Top Plug Used? | Yes | Centralizers Type | Bowstring |
| Top Plug Provided By | Team Oil Tools | Landing Collar Depth (ft) | 16,756 |
| Top Plug Size | 5.5" | Job Pumped Through | Cement head |
| Centralizers Used | Yes | Top Connection Thread | LTC |
| Centralizers Quantity | 158 | Top Connection Size | 5.5" |

CIRCULATION PRIOR TO JOB

| | | | |
|---|-----|---|----|
| Well Circulated By | Rig | YP Mud Out | 8 |
| Circulation Prior to Job | Yes | Solids Present at End of Circulation | No |
| Lost Circulation Prior to Cement Job | No | 10 sec SGS | 6 |
| Mud Density In (ppg) | 9.6 | 10 min SGS | 8 |
| Mud Density Out (ppg) | 9.6 | 30 min SGS | 12 |
| PV Mud In | 11 | Flare Prior to/during the Cement Job | No |
| PV Mud Out | 11 | Gas Present | No |
| YP Mud In | 8 | | |

TEMPERATURE

| | | | |
|---------------------------------|----|-----------------------------------|----|
| Ambient Temperature (°F) | 70 | Mix Water Temperature (°F) | 60 |
|---------------------------------|----|-----------------------------------|----|

Cementing Treatment



BJ FLUID DETAILS

| Fluid Type | Fluid Name | Density (ppg) | Yield (Cu Ft/sk) | H2O Req. (gals/sk) | Planned Top of Fluid (Ft) | Length (Ft) | Vol (sk) | Vol (Cu Ft) | Vol (bbls) |
|----------------------------|----------------------------|---------------|------------------|--------------------|---------------------------|-------------|----------|-------------|------------|
| Spacer / Pre Flush / Flush | IntegraGuard EZ Spacer | 12.0000 | | | 0.00 | | | | 60.0000 |
| Lead Slurry | BJCem P100.3.01C | 12.5000 | 2.0751 | 11.84 | 0.00 | 5,000.00 | 630 | 1,307.0000 | 232.7000 |
| Tail Slurry | BJCem P50.6.02C | 13.5000 | 1.4772 | 7.45 | 5,000.00 | 11,849.94 | 2,071 | 3,060.0000 | 544.9000 |
| Displacement 2 | Retarded Water | 8.3337 | | | 15,948.00 | 0.00 | 0 | 0.0000 | 20.0000 |
| Displacement Final | Displacement Final (Water) | 8.3308 | | | 0.00 | | | 0.0000 | 370.8000 |

Cementing Treatment



| Fluid Type | Fluid Name | Component | Concentration | UOM |
|----------------------------|----------------------------|-----------------------------------|---------------|--------|
| Spacer / Pre Flush / Flush | IntegraGuard EZ Spacer | SAND, S-8, Silica Flour, 200 Mesh | 208.5300 | PPB |
| Spacer / Pre Flush / Flush | IntegraGuard EZ Spacer | Spacer Surfactant, SS-247 | 0.5000 | GPB |
| Spacer / Pre Flush / Flush | IntegraGuard EZ Spacer | EXTENDER, BENTONITE | 5.0000 | PPB |
| Spacer / Pre Flush / Flush | IntegraGuard EZ Spacer | RETARDER, R-31 | 0.5100 | PPB |
| Spacer / Pre Flush / Flush | IntegraGuard EZ Spacer | SPACER SURFACTANT, SS-267 | 0.5000 | GPB |
| Spacer / Pre Flush / Flush | IntegraGuard EZ Spacer | GELLANT WATER, GW-86 | 1.0000 | PPB |
| Lead Slurry | BJCem P100.3.01C | GELLANT WATER, GW-86 | 0.0500 | BWOB |
| Lead Slurry | BJCem P100.3.01C | CEMENT, ASTM TYPE III | 100.0000 | PCT |
| Lead Slurry | BJCem P100.3.01C | Foam Preventer, FP-25 | 0.3000 | BWOB |
| Lead Slurry | BJCem P100.3.01C | BONDING AGENT, BA-60 | 0.4000 | BWOB |
| Lead Slurry | BJCem P100.3.01C | FLUID LOSS, FL-24 | 0.3000 | BWOB |
| Lead Slurry | BJCem P100.3.01C | IntegraSeal CELLO | 0.1300 | LBS/SK |
| Lead Slurry | BJCem P100.3.01C | RETARDER, R-31 | 0.1500 | BWOB |
| Tail Slurry | BJCem P50.6.02C | CEMENT, CLASS G | 50.0000 | PCT |
| Tail Slurry | BJCem P50.6.02C | GELLANT WATER, GW-86 | 0.1000 | BWOB |
| Tail Slurry | BJCem P50.6.02C | FLUID LOSS, FL-66 | 0.2000 | BWOB |
| Tail Slurry | BJCem P50.6.02C | RETARDER, SR-20 | 0.0700 | BWOB |
| Tail Slurry | BJCem P50.6.02C | EXTENDER, BENTONITE | 2.0000 | BWOB |
| Tail Slurry | BJCem P50.6.02C | Foam Preventer, FP-25 | 0.3000 | BWOB |
| Tail Slurry | BJCem P50.6.02C | Flyash (Rockies) | 50.0000 | PCT |
| Displacement 2 | Retarded Water | RETARDER, R-8L | 0.5000 | GPB |
| Displacement 2 | Retarded Water | BIOCIDE, BIOC11139W | 0.0100 | GPB |
| Displacement Final | Displacement Final (Water) | BIOCIDE, BIOC11139W | 0.0100 | GPB |

TREATMENT SUMMARY

| Fluid | Rate (bpm) | Fluid Vol. (bbls) |
|----------------------------|------------|-------------------|
| IntegraGuard EZ Spacer | 3.00 | 60.00 |
| BJCem P100.3.01C | 6.00 | 232.70 |
| BJCem P50.6.02C | 6.00 | 544.90 |
| Retarded Water | 5.00 | 20.00 |
| Displacement Final (Water) | 8.00 | 370.80 |

Cementing Treatment



DISPLACEMENT AND END OF JOB SUMMARY

| | | | |
|---------------------------------------|------|------------------------------------|--------|
| Displaced By | BJ | Amount of Cement Returned/Reversed | 90 |
| Calculated Displacement Volume (bbls) | 388 | Method Used to Verify Returns | Visual |
| Actual Displacement Volume (bbls) | 388 | Amount of Spacer to Surface | 60 |
| Did Float Hold? | Yes | Pressure Left on Casing (psi) | 0 |
| Bump Plug | Yes | Amount Bled Back After Job | 4.5 |
| Bump Plug Pressure (psi) | 2200 | Total Volume Pumped (bbls) | 1232 |
| Were Returns Planned at Surface | Yes | Top Out Cement Spotted | No |
| Cement returns During Job | Yes | Lost Circulation During Cement Job | No |

Customer Name Bonanza Creek
 Well Name State North Platte U41-35-1XRLNB
 Job Type Long String

District Cheyenne
 Supervisor C. Johnson
 Engineer _____



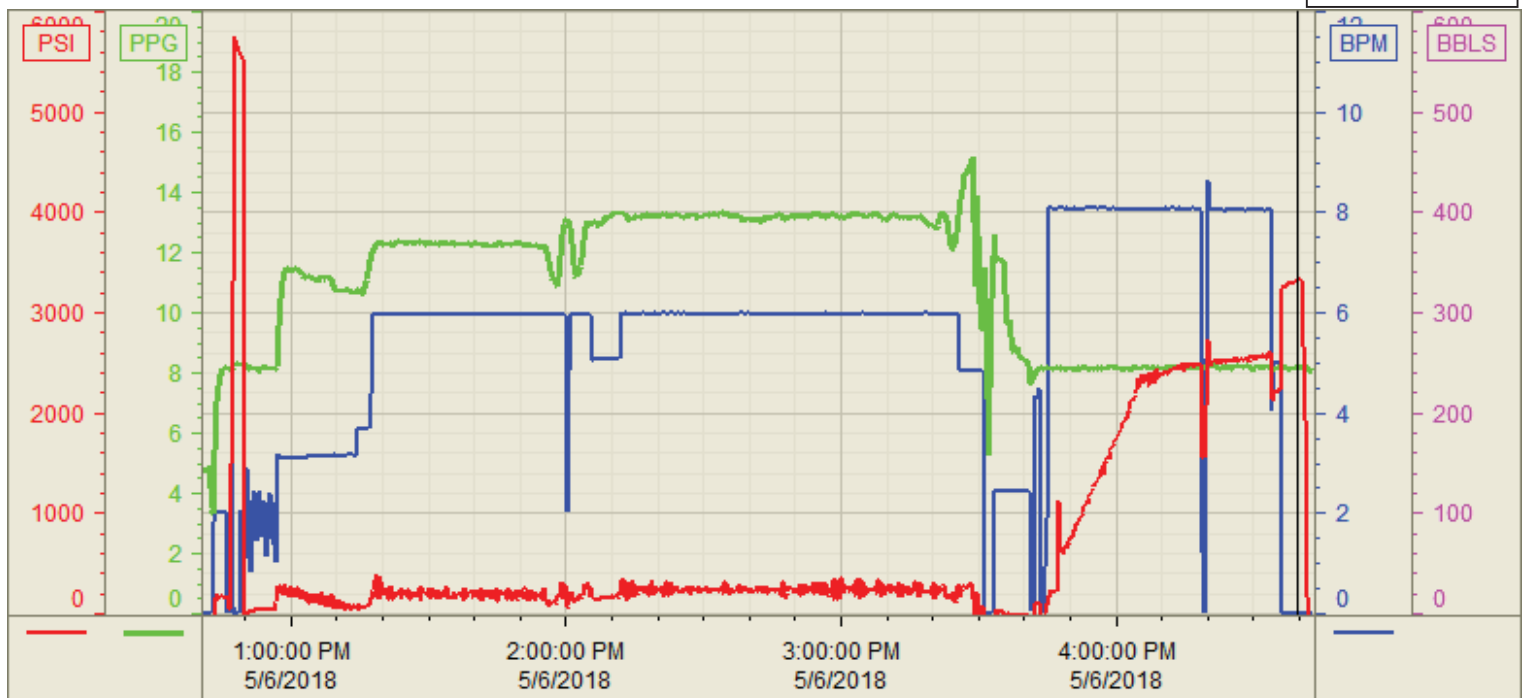
| Start Date/Time | Category | Event | Event ID | Density (lb/gal) | Pump Rate (bpm) | Pump Vol (bbls) | Pipe Pressure (psi) | Comments |
|-----------------|--------------|------------------------|----------|------------------|-----------------|-----------------|---------------------|---|
| 5/6/18 0300 | Mobilization | Callout | 1 | | | | | Crew called out requested on location at 1100 |
| 5/6/18 0930 | Mobilization | Arrive on Location | 48 | | | | | Crew arrived on location |
| 5/6/18 0940 | Operational | Safety Meeting | 53 | | | | | Safety meeting |
| 5/6/18 0955 | Operational | Spot Units | 49 | | | | | Spotted all units |
| 5/6/18 1005 | Operational | Rig Up | 50 | | | | | Rigged up all equipment |
| 5/6/18 1200 | Operational | Safety Meeting | 53 | | | | | Safety meeting |
| 5/6/18 1250 | Operational | Prime Up | 52 | 8.34 | 2 | 5 | 150 | Fill lines with 5 bbls fresh water |
| 5/6/18 1254 | Operational | Pressure Test | 54 | | | | | Pressure test lines to 5000 psi |
| 5/6/18 1304 | Operational | Pump Spacer | 56 | 12 | 3 | 60 | 250 | Pump 20 bbls spacer at 12 ppg, pump 20 bbls spacer at 11.5 ppg, pump 20 bbls spacer at 11 ppg |
| 5/6/18 1323 | Operational | Pump Lead Cement | 58 | 12.5 | 6 | 233 | 300 | Pump 233 bbls lead cement at 12.5 ppg (630 sks, 2.08 Y, 11.84 gal/sk) |
| 5/6/18 1404 | Operational | Pump Tail Cement | 60 | 13.5 | 6 | 546 | 150 | Pump 546 bbls tail cement at 13.5 ppg (2071 sks, 1.48 Y, 7.45 gal/sk) |
| 5/6/18 1539 | Operational | Other (See comments) | 76 | | | | | Shutdwon |
| 5/6/18 1541 | Operational | Clean Pumps and Lines | 62 | | | | | Clean pumps and lines to the pit |
| 5/6/18 1552 | Operational | Drop Top Plug | 63 | | | | | Drop third party plug |
| 5/6/18 1553 | Operational | Pump Displacement | 64 | 8.34 | 370 | 370 | 1700 | Pump 388 bbls water displacement |
| 5/6/181622 | Operational | Spacer Back to Surface | 65 | | | | | Spacer back to surface at 235 bbls away, 60 bbls spacer to surface |
| 5/6/18 1632 | Operational | Cement Back to Surface | 66 | | | | | Cement back to surface at 295 bbls away, 90 bbls cement back to surface |
| 5/6/18 1641 | Operational | Other (See comments) | 76 | 8.34 | 18 | 18 | 2000 | Slow pump rate to 5 bpm at 370 bbls away |
| 5/6/18 1644 | Operational | Land Plug | 67 | | | | 2200 | Land plug at 2200 psi took to 3200 psi |
| 5/6/18 1647 | Operational | Check Floats | 68 | | | | | Check floats, floats holding, 4.5 bbls back |
| 5/6/18 1700 | Operational | Safety Meeting | 53 | | | | | Safety meeting |
| 5/6/18 1715 | Operational | Rig Down | 73 | | | | | Rigged down all equipment |
| 5/6/18 1830 | Mobilization | Leave Location | 74 | | | | | Crew departed location |

Customer: Bonanza Creek
Well Number: U41-35-1XRLNB
Lease Info: State North Platte



Print Date/Time

5/6/2018 5:07:56 PM



| | Name | Y value | X value/time stamp | Tag name Y |
|---|---------------------|---------|------------------------|----------------------------------|
| 1 | DS - Press (PSI) | 3306.4 | 5/6/2018 4:39:26 PM | Cementer\DS_DISCHARGE_PRESS_DIAL |
| 2 | DH - Density (PPG) | 8.22 | 5/6/2018 4:39:36 PM | Cementer\DENSITY2_ACTUAL_RATE |
| 3 | Combined Rate (BPM) | 0.00 i. | 5/6/2018 4:39:29 PM i. | Cementer\Flow_Combined |
| 4 | | | | |
| 5 | | | | |

Source: Control1 5:07:50 PM